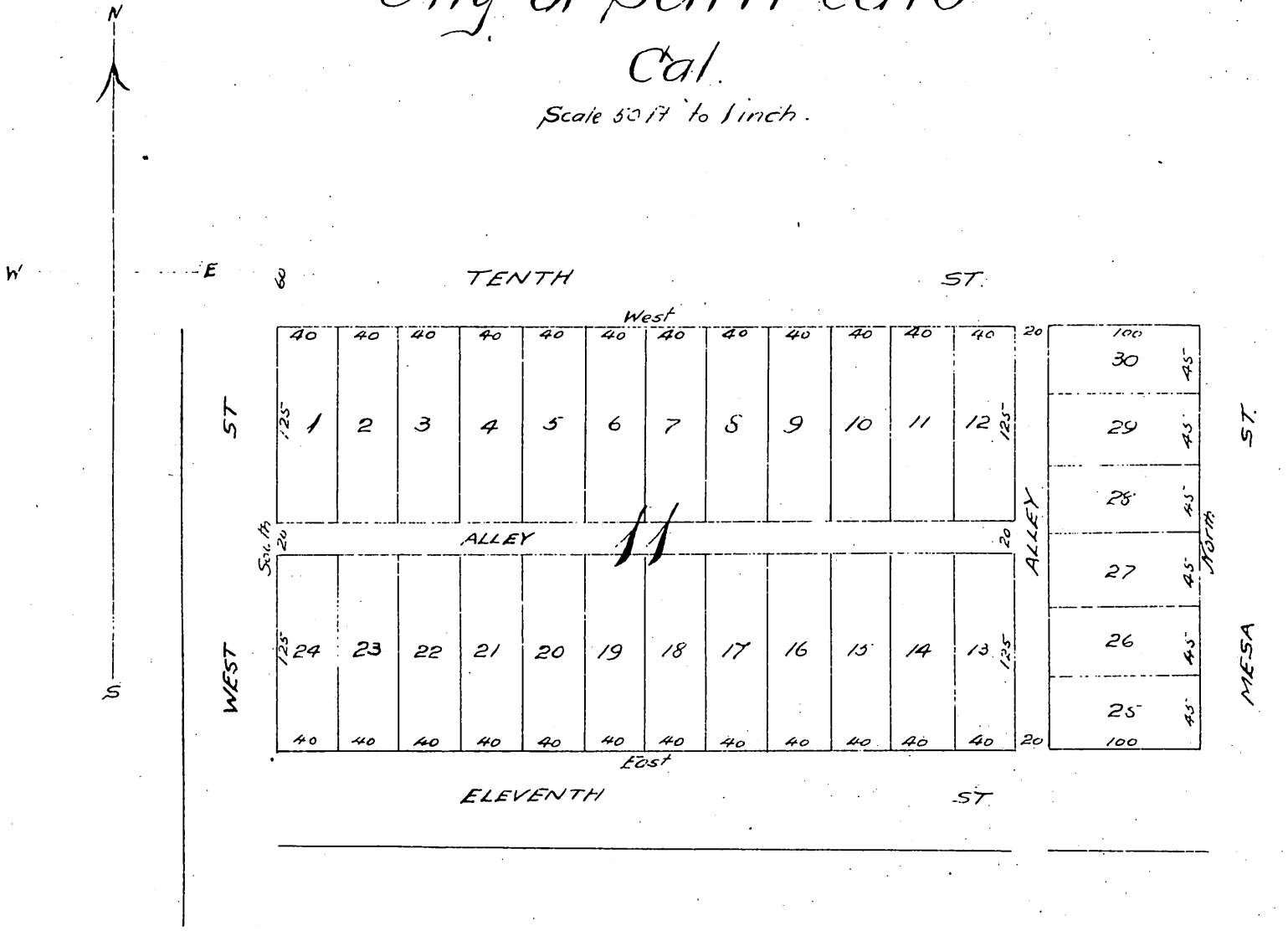


# Map of Blk 11 in the City of San Pedro Cal.

Scale 50 ft to 1 inch.



We the undersigned of Block Eleven (11) in the City of San Pedro, Los Angeles County, California do subdivide said Block Eleven and call said subdivision Hill and Jordan's subdivision and that the distances and miles and bounds are correct

Decr 3 1895.

Signed by owners

Randolph N. Hill.  
Eugene Jordan.

A full, true and correct copy of the original

(Scale reduced to 100 feet to 1 inch)

Recorded Dec 23 1895 at 11 A.M. post 10 A.M.

at request of I. E. Lacy.

I. E. Lacy, County Recorder.

By E. T. Wright.

Co Sur. and ex-officio Dep. Co Rec.