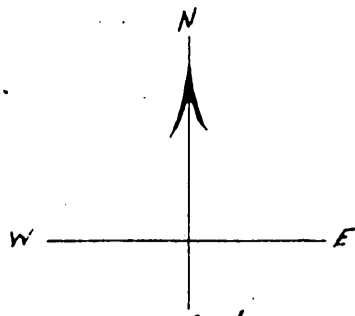


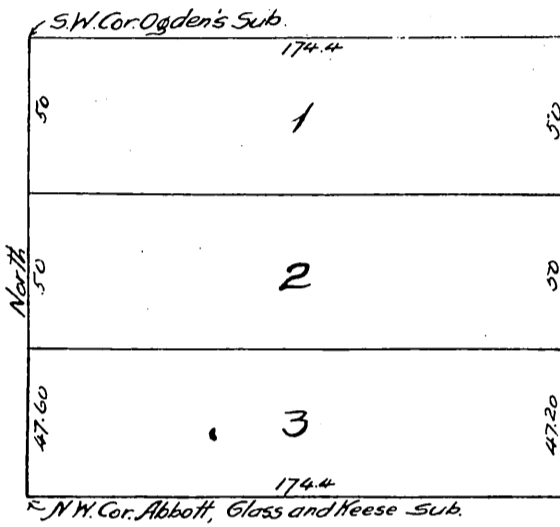
5925



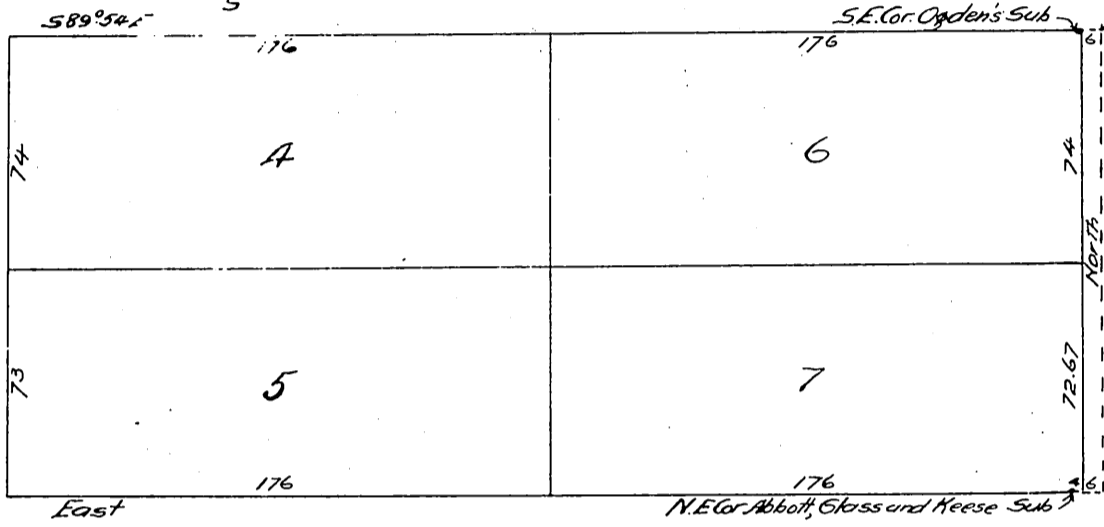
# J. W. Hartley Tract

A subdivision of the N. 2 acres Lot 6, Bl'k. L  
San Pasqual Tract.

Surveyed Nov. 1895, by  
W. B. Clapp, Pasadena, Cal.  
Scale, 1 inch = 50 feet.



60 CATALINA AVE



60 WILSON AVE

Owner: *Geo. E. Linsley*

A full, true and correct copy of the original  
(Scale reduced to 60 feet to 1 inch)  
Recorded Jan. 7 1896, at 31 Min. past 11 A.M.  
at request of G. A. Gibbs.

E. C. Hodgman, County Recorder.

by *E. T. Wright*

Co. Sur. and ex-officio Dep. Co. Rec.