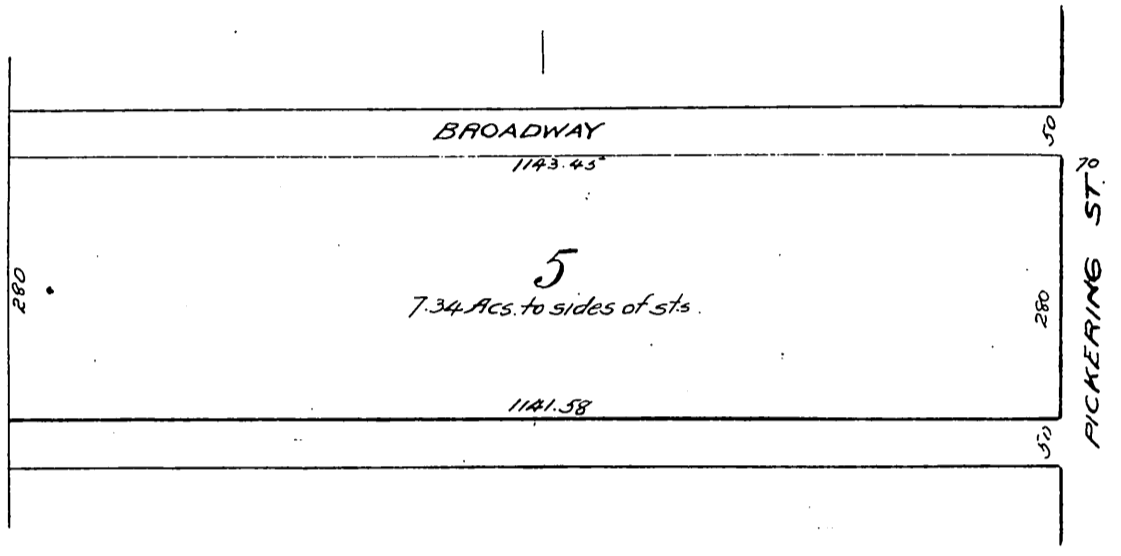


Lot 5, Block D
Pickering Land & Water Co's. Subdivision
of the
John M. Thomas Ranch
Being Block 5 of Dorlands Addition to Whittier.
as reverted to acreage
Scale 200ft = 1 in.
See Misc Rec. 21-33.



Minute Book 21, page 210

January 21st. 1896.

In re restoration to acreage of lots in } The petition of Edward R. Hull, sole owner in fee simple of Block 5, Dor-
Block 5, Dorlands Addn to Whittier. } lands Addition to Whittier comprising lots One to Twenty, both inclusive asking
this Board to cause said lots to be restored to acreage, is presented and read and upon motion of Supervisor Wood-
ward duly seconded and carried, it is ordered that said Lots One to Twenty, both inclusive in Block 5, Dorlands
Addition to Whittier, be and the same are hereby restored to acreage, upon the recording in the office of the Record-
er of this County, of a map showing all property effected by this order.

A full, true and correct copy of the original,
Recorded Jan 30, 1896 at 16 Min. past 3 P.M.
at request of E. R. Hull.

E. C. Hodgman, County Recorder.

By E. T. Wright.

Co. Sur. and ex-officio Dep. Co. Rec.