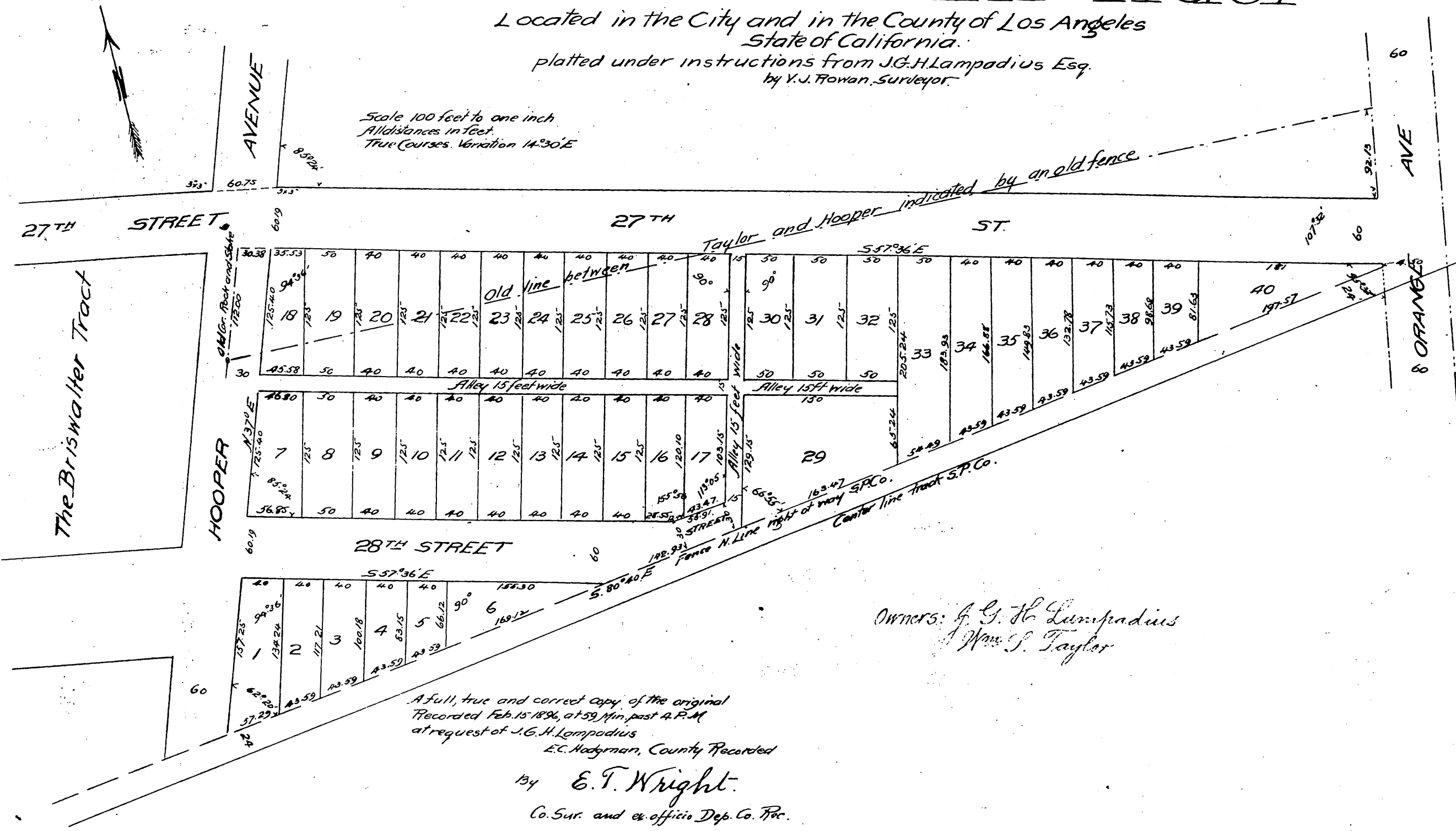


Map of the subdivision of the Adams Street Park Tract

Located in the City and in the County of Los Angeles
State of California.

platted under instructions from J.G.H. Lampadius Esq.
by V.J. Flowan, Surveyor.

Scale 100 feet to one inch
All distances in feet
True Courses, Variation 14° 30' E



Owners: J. G. H. Lampadius
Wm. S. Taylor

A full, true and correct copy of the original
Recorded Feb. 15 1896, at 59 Min. past 4 P.M.
at request of J.G.H. Lampadius
E.C. Hodgman, County Recorder
By E.T. Wright.
Co. Sur. and ex. officio Dep. Co. Rec.