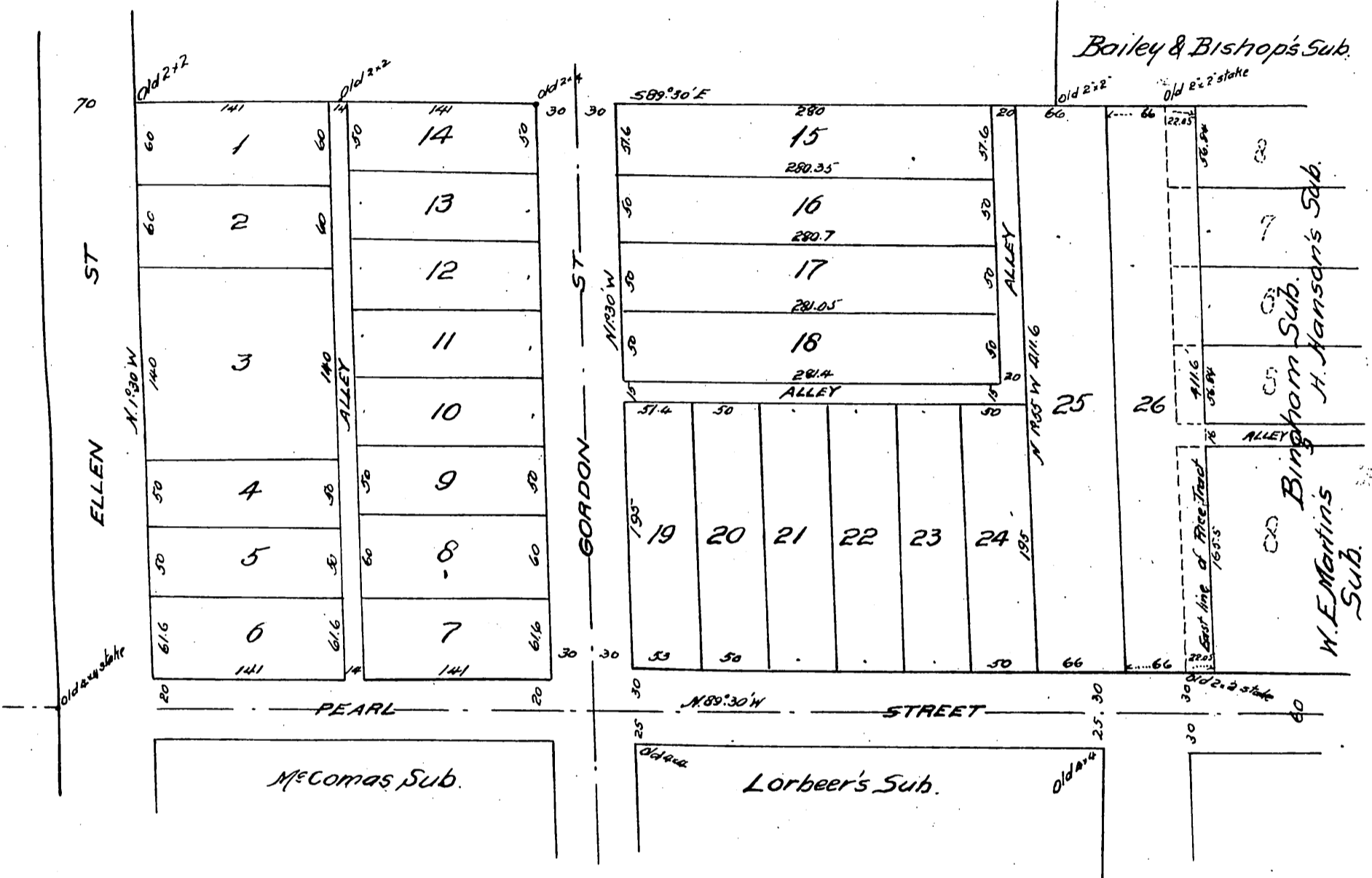


Map of Ogle & Crabb's Subdivision

of the
Rice Tract
Pomona, Cal.

Surveyed by E.D. Severance, Los Angeles
1895

Scale 60 feet = 1 inch.



Owners:

George W. Ogle
Aiza Crabb

A full, true and correct copy of the original
(Scale reduced to 100 feet to 1 inch)
Recorded Feb 26 1896 at 53 Min. past 4 P.M.
at request of Aiza Crabb.

E.C. Hodgman, County Recorder.

By E.T. Wright.

Co. Sur. and ex-officio Dep. Co. Rec.