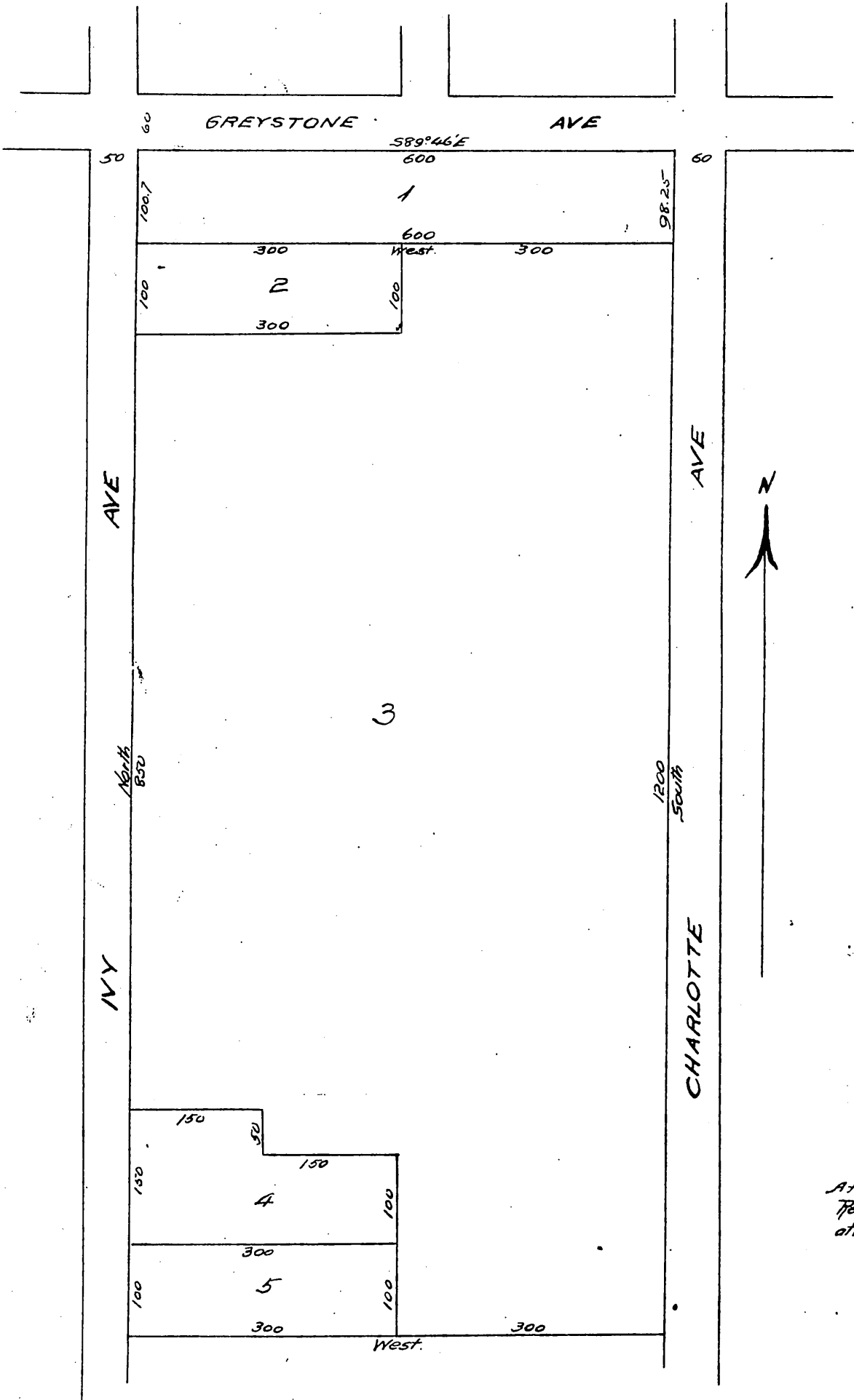


Plat of  
 Dorland's Replat  
 of  
 J.S. Keefer's Oak Grove No 2  
 being a subdivision of N. 20 Acs. of Lot 70  
 Santa Anita Rancho.  
 Los Angeles Co. Cal.  
 Scale 150' = 1 in.



Owner:  
 C.P. Dorland

A full, true and correct copy of the original  
 Recorded Mar. 3 1896, at 32 Min. past 2 P.M.  
 at request of C.P. Dorland  
 E.C. Hodgman, County Recorder.  
 by E.T. Wright.  
 Co. Sur and ex officio Dep. Co. Rec.