

Map of Hooper's Adams Street Tract

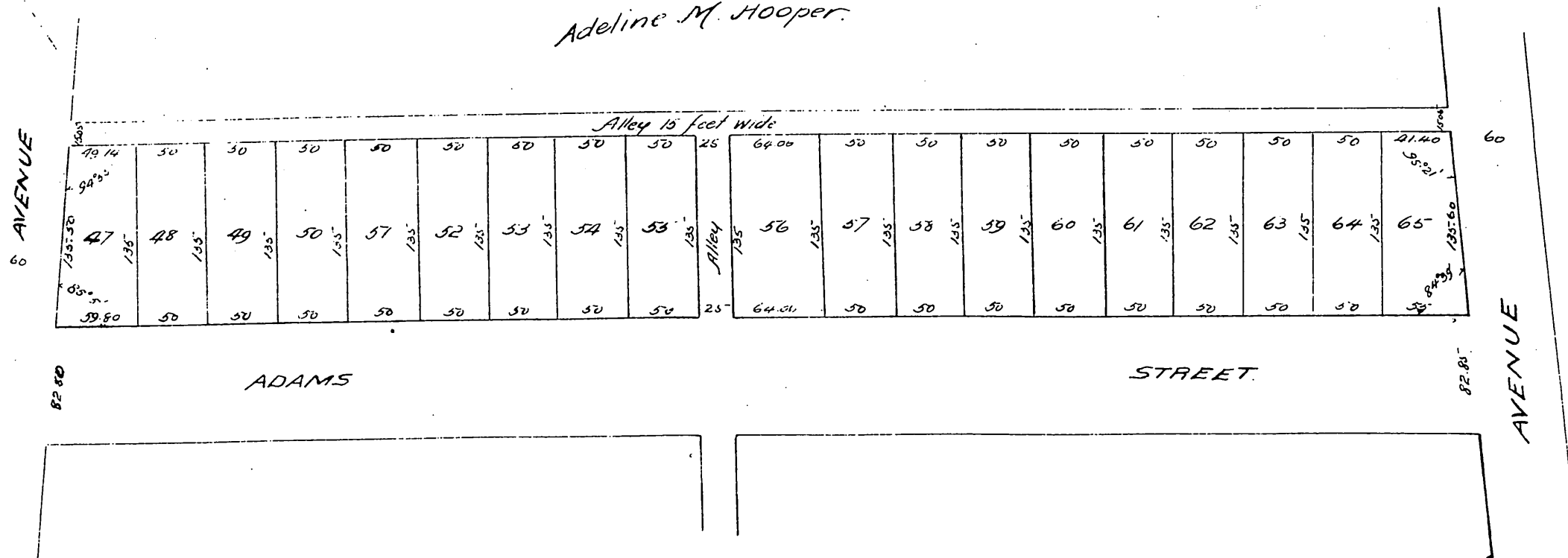
Located in the City and the County of Los Angeles
State of California

Scale, 100 feet to one inch.
True courses. Var. 14°30' East.

Surveyed February 1896
by V. J. Rowan, Surveyor.

The Hooper's Adams Street Tract is a subdivision of a portion of
the land conveyed by George Dalton to John M. Hooper by deed da-
-ted December 6th 1873, recorded in Book 38 of Deeds, page 364
Records of Los Angeles County California.

Adeline M. Hooper.



A full, true and correct copy of the original
 Recorded Map & 1896 of 24 Min. post 11 A.M.
 at request of A.M. Hooper
 E.C. Hodgman, County Recorder.
 by E.T. Wright.
 Co. Sur. and ex-officio Dep. Co. Rec.

Owners: *William D. Hooper
 Office of Recorder
 Alvin G. Black*

