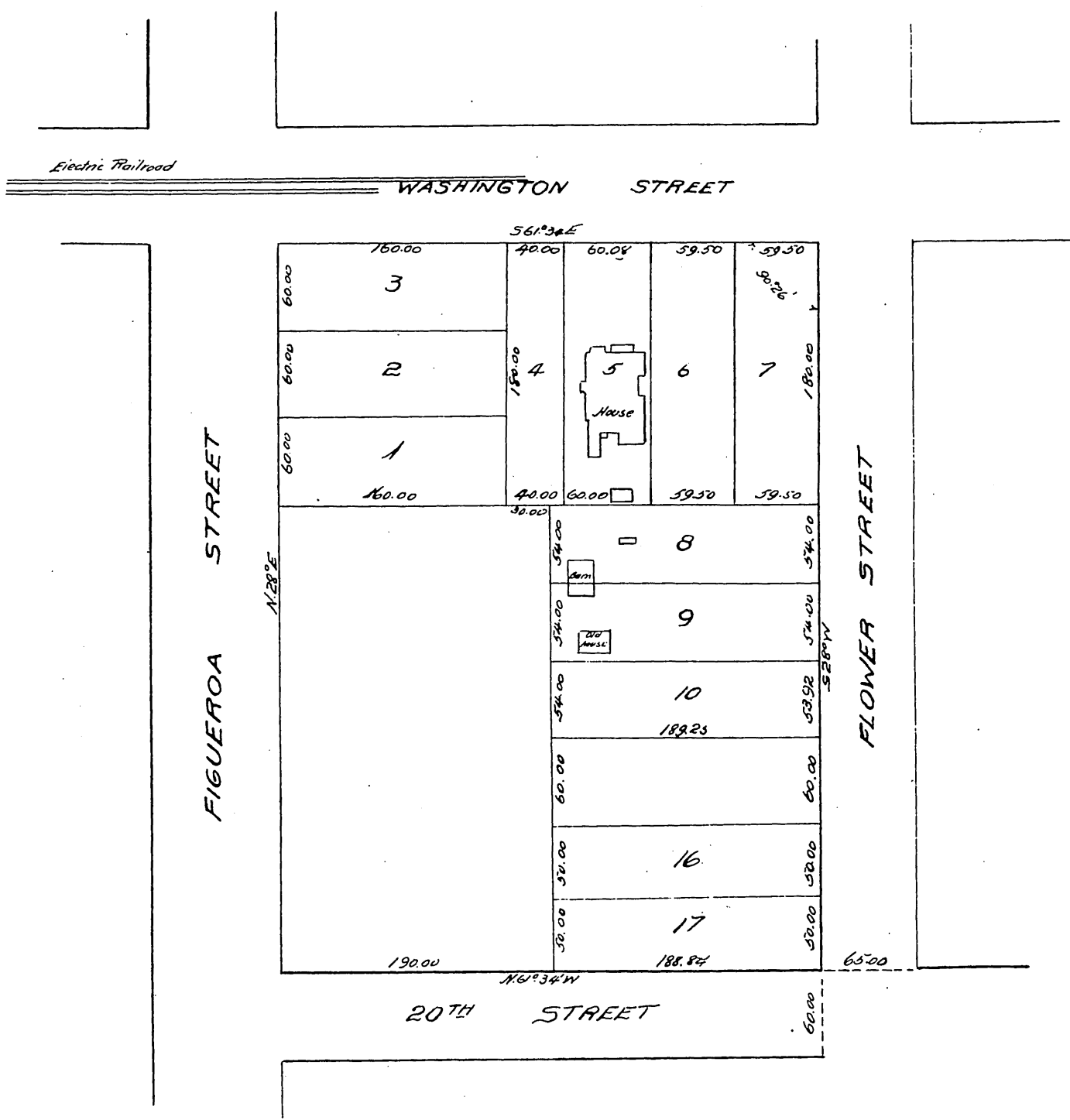


Map of
 Resubdivision of
 Lots 7, 8, 9, 10, 11, 12, 13 & part of 14; also Lots 16 & 17
 Edgar's Subdivision
 of a part of Lot 3 Block 1 Hancock's Survey
 City Donation Lots
 Los Angeles, California.
 Resubdivided Aug 31, 1895 by John Goldsworthy
 Scale, 1 in = 50 ft.



Witness:
 W. J. Edgar
 Catherine G. Edgar

A full, true and correct copy of the original
 (Scale reduced to 100 feet to 1 inch)
 Recorded Mar. 9, 1896, at 4.45 past 4 P.M.
 at request of H.C. Austin.
 E.C. Hodgman, County Recorder.
 By E.T. Wright.
 Co. Sur. and ex-officio Dep. Co. Rec.