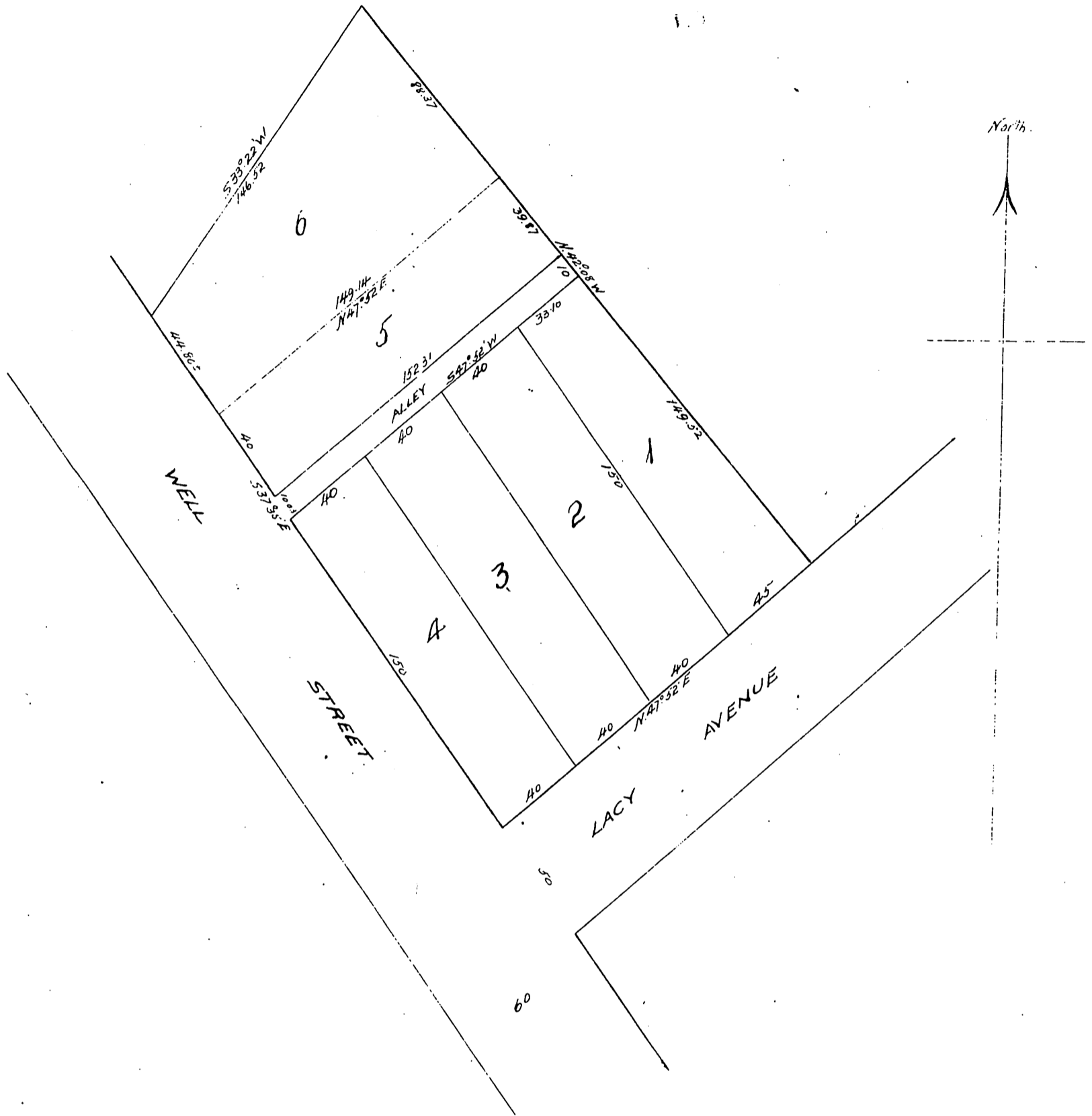


*Avery's Subdivision*  
*of Lot 18 Griffin's Arroyo Seco Tract*  
*per map recorded book 22 page 46, Misc. Rec. Los Angeles Co. Cal*  
*Los Angeles City*  
*Scale 50 ft = 1 in.*



Witness:  
*Wm. H. Clary*

*A full, true and correct copy of the original*  
*Recorded Mar 13 1896, at 10 Min. past 9 A.M.*  
*at request of W. H. Avery*  
*L. C. Hodgman, County Recorder.*  
*By E. T. Wright.*  
*Co. Sur. and ex-officio Dep. Co. Rec.*