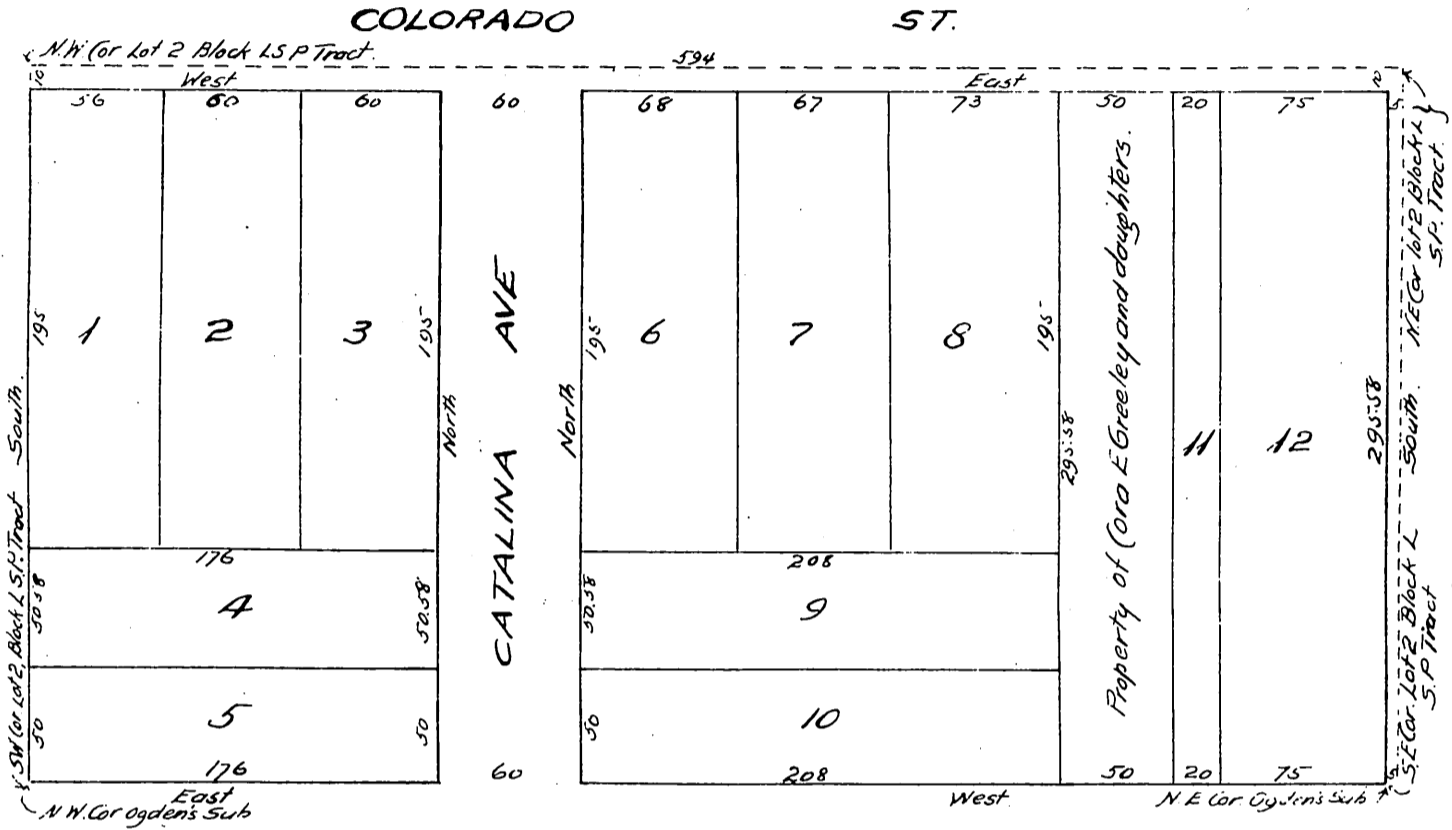


*S. P. Maclean Subdivision*  
 of  
*Lot 2 Blk. L San Pasqual Tract*  
 Surveyed November 1895 by W. B. Clapp, Pasadena, Cal.  
 Scale 1 inch = 40 feet.



*Witness Samuel Maclean*

A full, true and correct copy of the original  
 (Scale reduced to 80 feet to 1 inch)  
 Recorded Mar. 17, 1896 at 35 min past 10 P.M.  
 at request of T. I. & T. Co.

E. C. Hodgman, County Recorder.

By *E. T. Wright*

Co. Sec. and ex. officio Dep. Co. Rec.