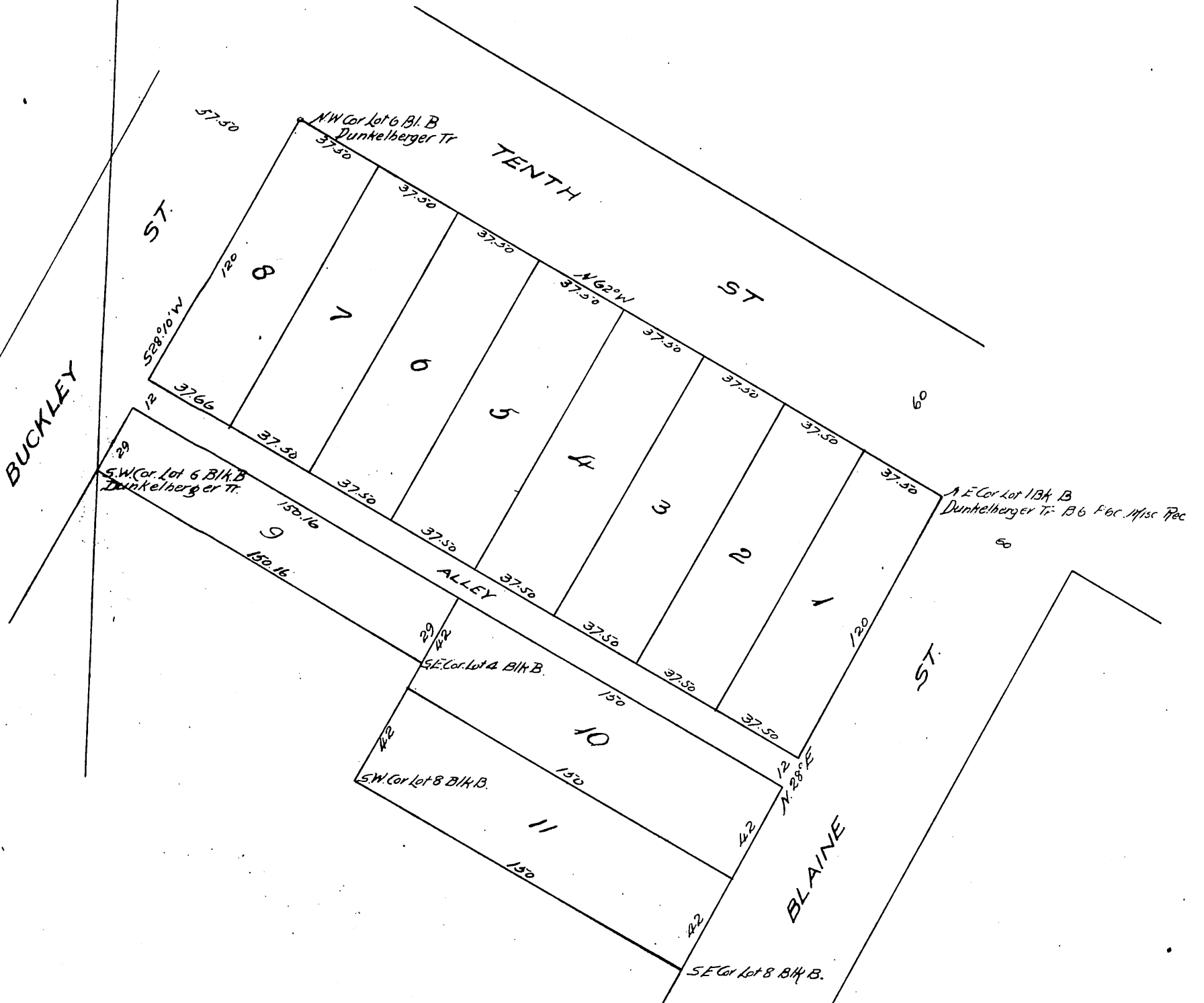


Map of
 Thomas S. Ewing's Replat
 of a part of
 Block B Dunkelberger Tr.

as per map recorded in Book 6, P 60
 Misc. Records L. A. Co. Califa.
 Scale 50'-1"
 Surveyed by H. J. Stocker March 1896.



Owners: Thomas S. Ewing
 Meta Smith.

A full, true and correct copy of the original
 recorded Mar. 20 1896, at 37 Min. past 2 P.M.
 at request of T. I. & T. Co.

E. C. Hodgman Co. Recorder.

By E. T. Wright.

Co. Sur and ex-officio Dep. Co. Rec.