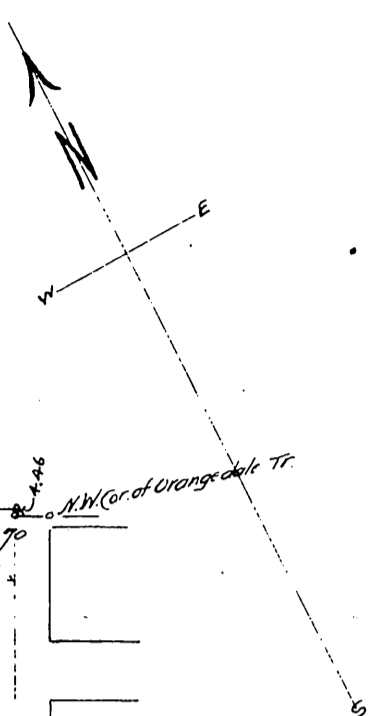


Map of Menlo Park Subdivision No. 1 Los Angeles, Cal.

Scale 200 feet = 1 inch.

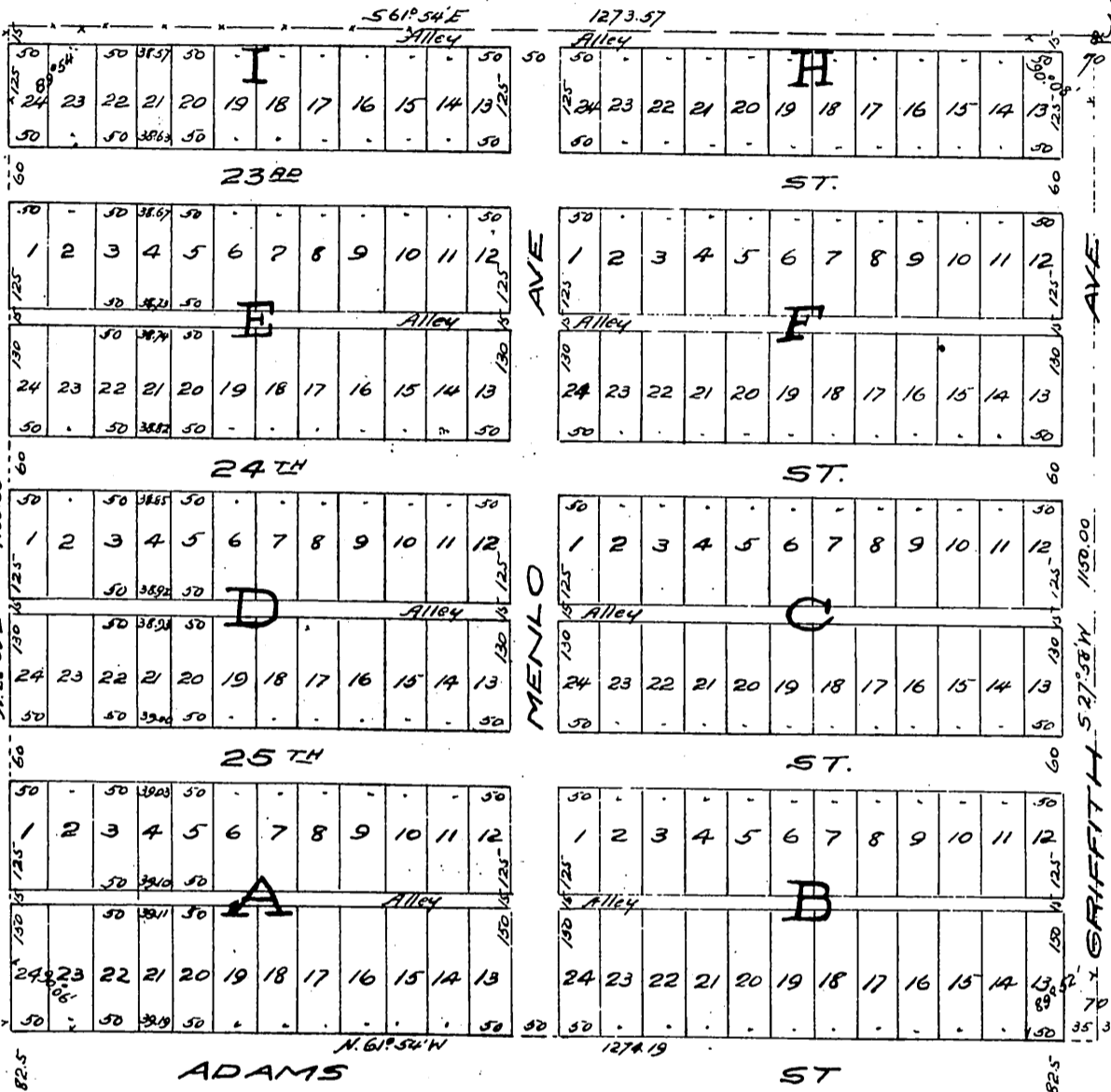
Subdivided at request of Easton, Eldridge & Co.
by E. D. Severance.



Line between City Street Center Granite Monuments at intersection of
Washington Street and South Alton Boundary with San Pedro Street.

Garey Place Tr.

A. S. Shorb



The land herein subdivided is enclosed by the heavy purple lines

Grider & Dow's

Adams St. Tract.

Owner: A. A. Quatman.

A full, true and correct copy of the original
Recorded Apr. 2 1896, at 16 Min. past A.P.M.
at request of Easton, Eldridge & Co.

E. C. Hodgman, County Recorder.

By E. T. Wright.

Co. Sur. and ex-officio Dep. Co. Rec.