

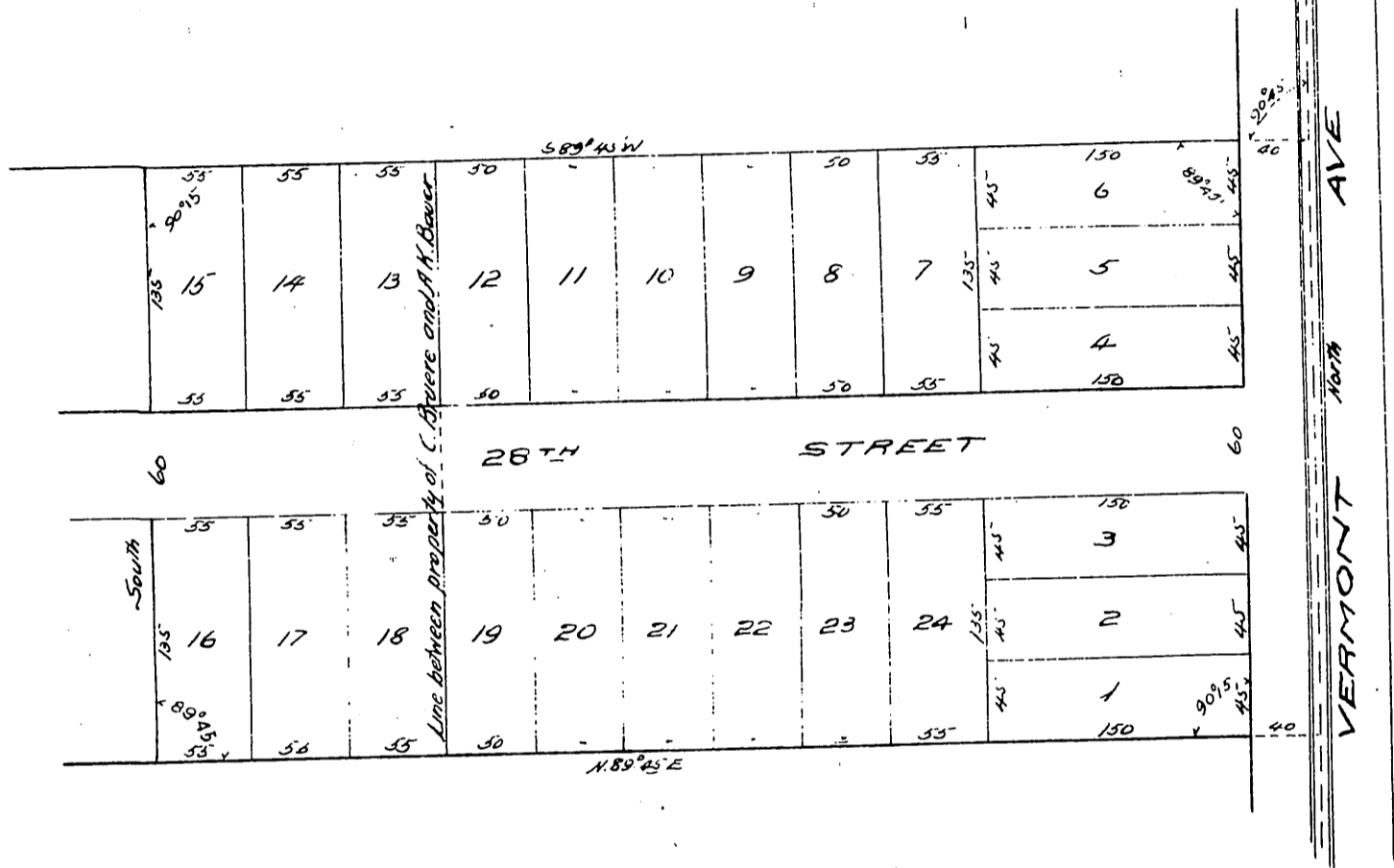
N.E. Cor. Sect 1 T 2 S. R 14 W S.B.M.

Map of The Juanita Tract

Being a subdivision of a part of
the NE 1/4 of Sec. 1 T 2 S. R 14 W. S.B.M

Scale 1 inch = 60 ft.
Surveyed April 1896 by

J. G. Bennett.



Owners:
Olava Brewer
A. K. Bauer

A full, true and correct copy of the original
(Scale reduced to 100 ft. to 1 inch)
Recorded Apr 15 1896 at 36 Min. past 9 A.M.
at request of T. I. & T. Co
E. C. Hodgman County Recorder

By E. T. Wright.
Co. Sur. and ex officio Dep. Co. Rec.