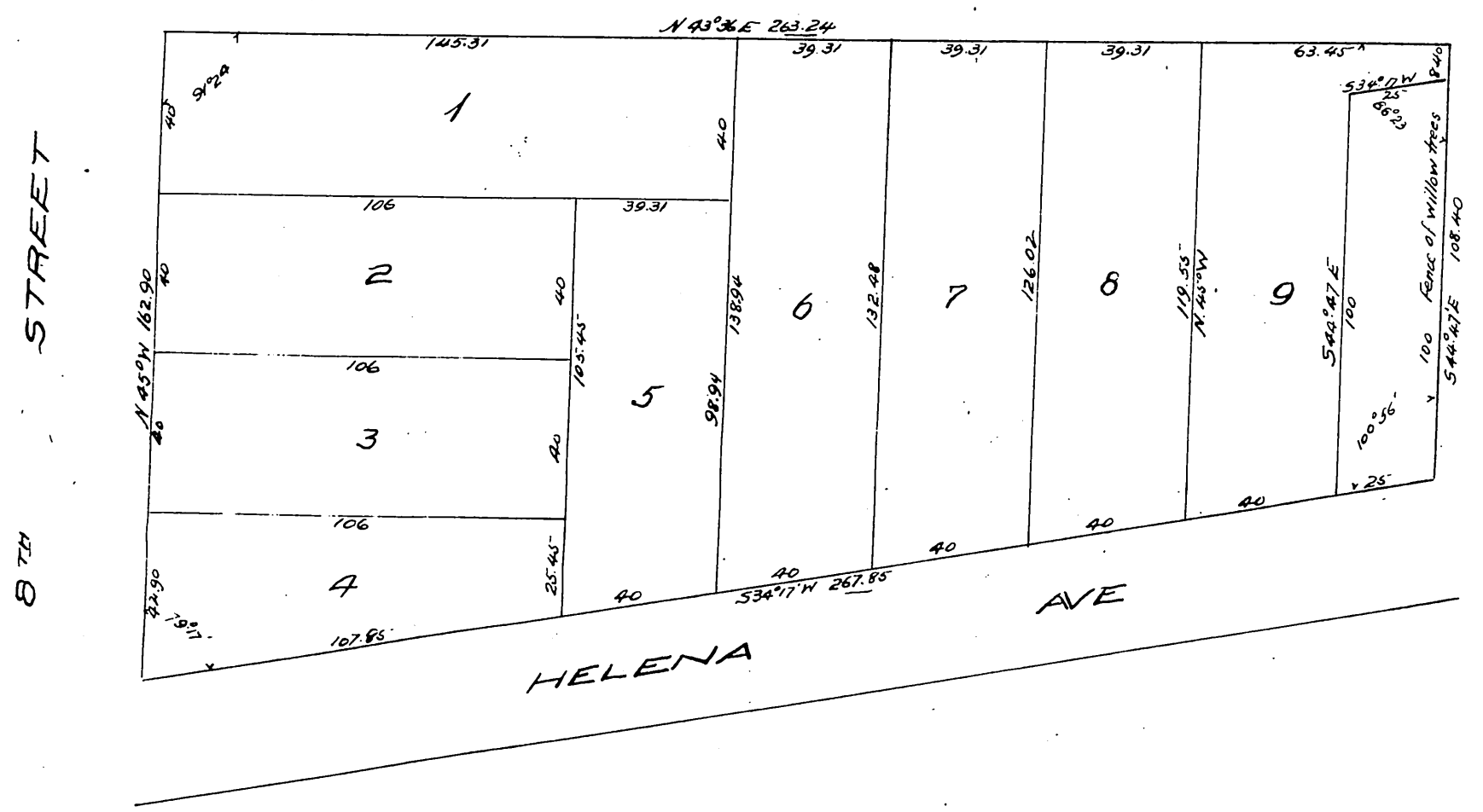
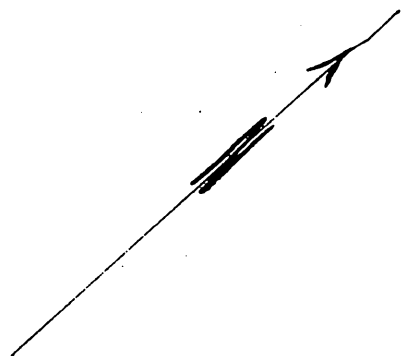


Map of
 Calkins & Clapp's
 Eighth Street Tract
 Los Angeles, Cal.
 Surveyed by Pillsbury & Skinner.
 1896
 Scale, 30ft = 1 in.



Owners: *A. G. Calkins*
A. B. Clapp

A full, true and correct copy of the original
 (Scale reduced to 40ft. to 1 inch)
 Recorded Apr. 16 1896, at 38 Min. past 4 P.M.
 at request of Calkins & Clapp.
 E.C. Hodgman. County Recorder.

By *E. T. Wright.*
 Co. Sur. and ex-officio Dep. Co. Rec.