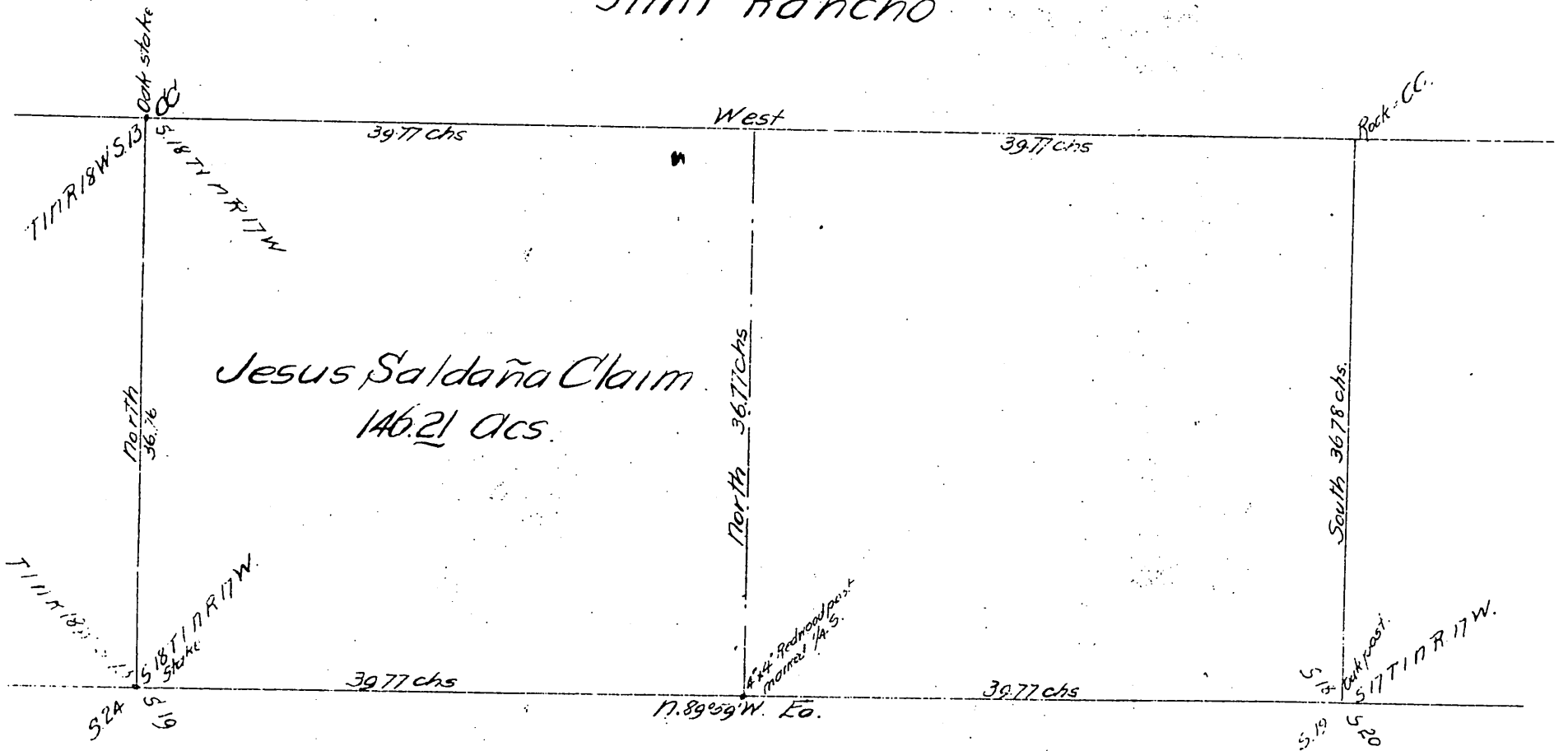


0074

Diagram showing the Land Claim of Jesus Saldaña being the Fractional S.W. 1/4 of Sec 18, T11N, R17W, S.B.M. Surveyed in April, 1896, at request of Jesus Saldaña. J.A. Bernal Survey. Scale 10 chs. to One Inch.

Simi Rancho



Jesus Saldaña

A full, true and correct copy of the original
Received May 4 1896 at 24 Min past 11 AM
at request of J Saldaña.

J. Madrona County Recorder
E. T. Wright
C. S. Anderson, Deputy