

# Jefferson Street

82.50

82.50

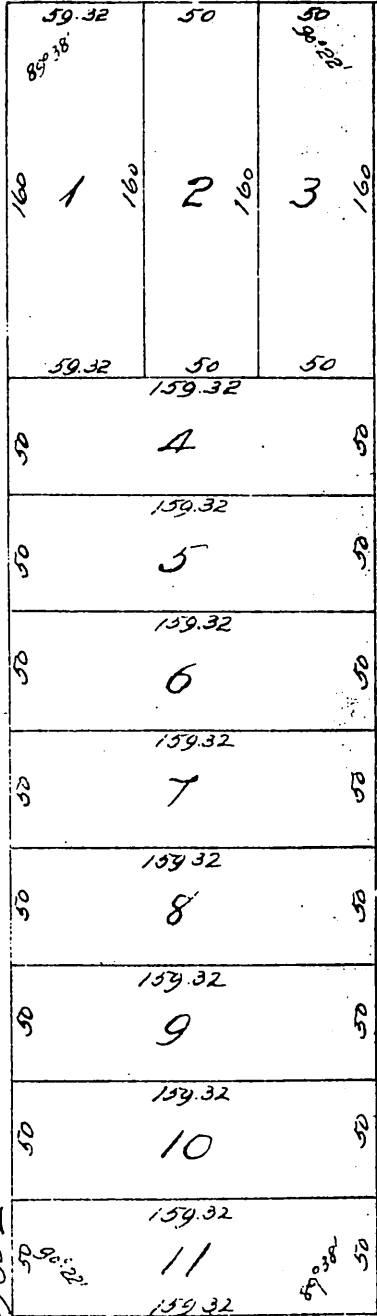
shown on Clark and Bryans Figueroa Street Tract

## Street

63.68

Old 5x3 Stake

S 61° 38' 30" E



# Amended Map of the E. E. Thomas' Home Tract

located in the  
City of Los Angeles, State of California  
Surveyed at the request of Elizabeth E Thomas, December 1895  
and April 1896 by V. J. Rowan Surveyor.

Scale 60 feet to 1 Inch.

True Courses, Var 14° 30' East

All distances in feet.

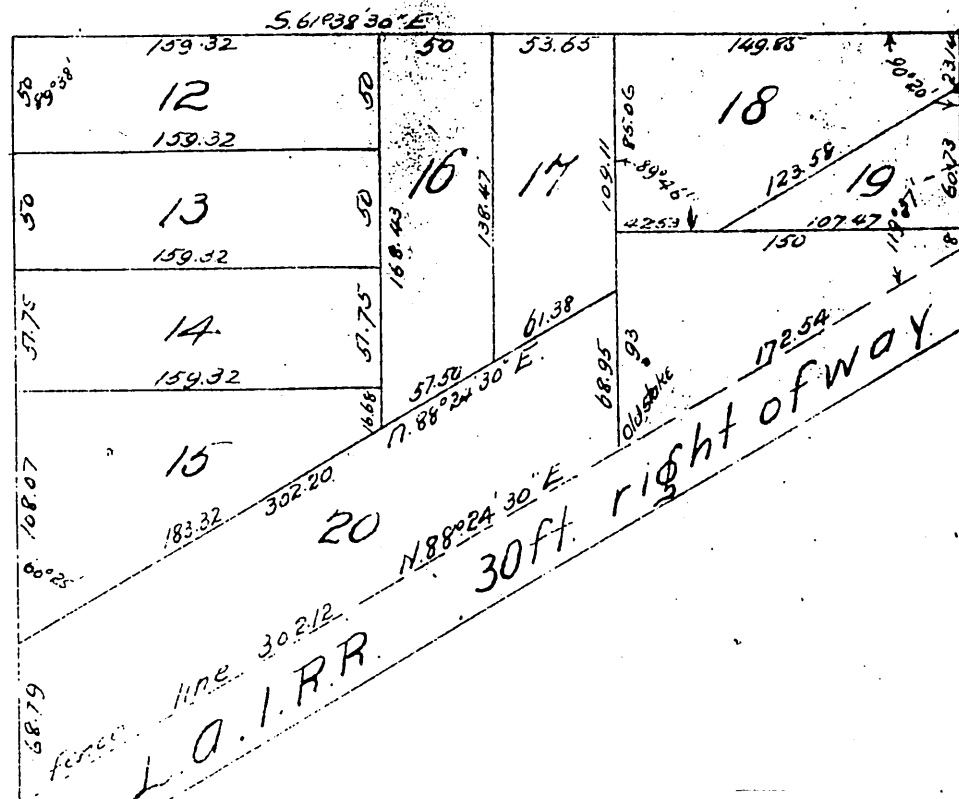
## 30th Street

## Street

West line of Hope Street 65

## Hope

63.68



Stake for this corner set 1 ft. Easterly of true corner  
Stake for this corner set 1 ft. Easterly of true corner.

Santa Monica Ave

Old 5x3 Stake

line 302.12  
L.A.I.R.R.

30ft. right of way

Elizabeth E Thomas

A full, true and correct copy of the original  
(Scale reduced to 80 feet to 1 inch)  
Recorded May 4 1896 at 24 Min. past 4 P.M.  
at request of Mrs. E. E. Thomas.  
E. C. Hodyman County Recorder  
By E. T. Wright  
Co. Sur. and ex-officio Dep. Co. Rec.