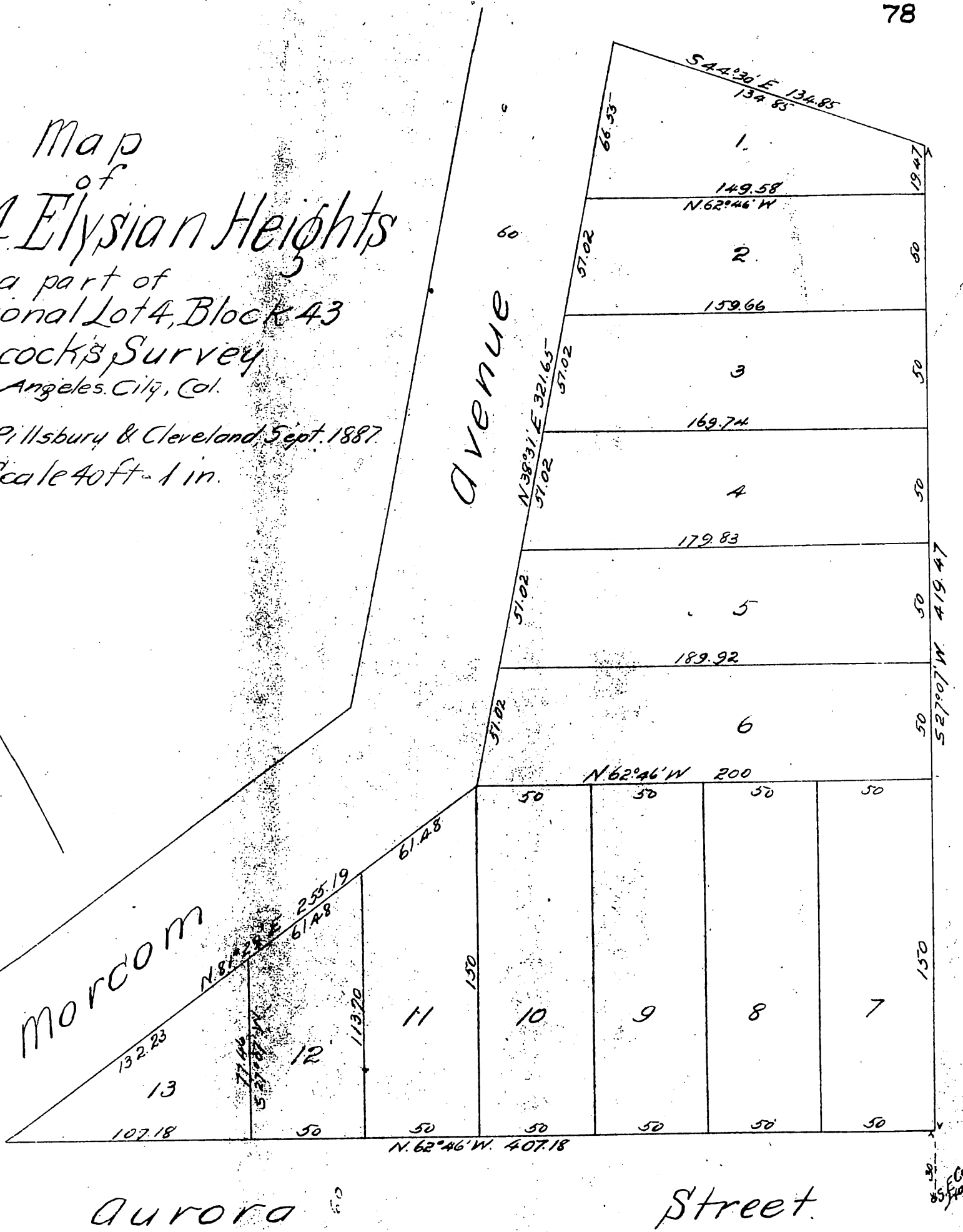
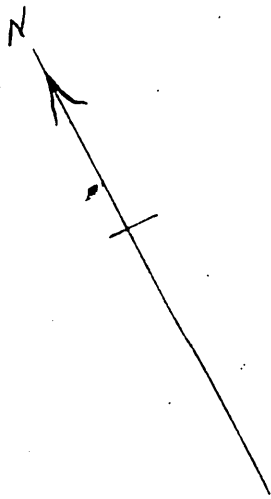


Map of Block 4 Elysian Heights

a part of fractional Lot 4, Block 43 Hancock's Survey Los Angeles City, Cal.

Surveyed by Pillsbury & Cleveland Sept. 1887

Scale 40ft = 1 in.



65 E. Cor. Lot 4 Block 43 Hancock's Survey

Owners: O.A. Dwers
Ozro W. Schiller

A full, true, and correct copy of the original
(Scale reduced to 50 feet = 1 inch)
Recorded May 19, 1896 at 4:00 Min. past 4 P.M.
at request of O.W. Childs.
E.C. Hodgeman, County Recorder
By E.T. Wright
Co. Sur. and ex-officio Dep. Co. Sur.