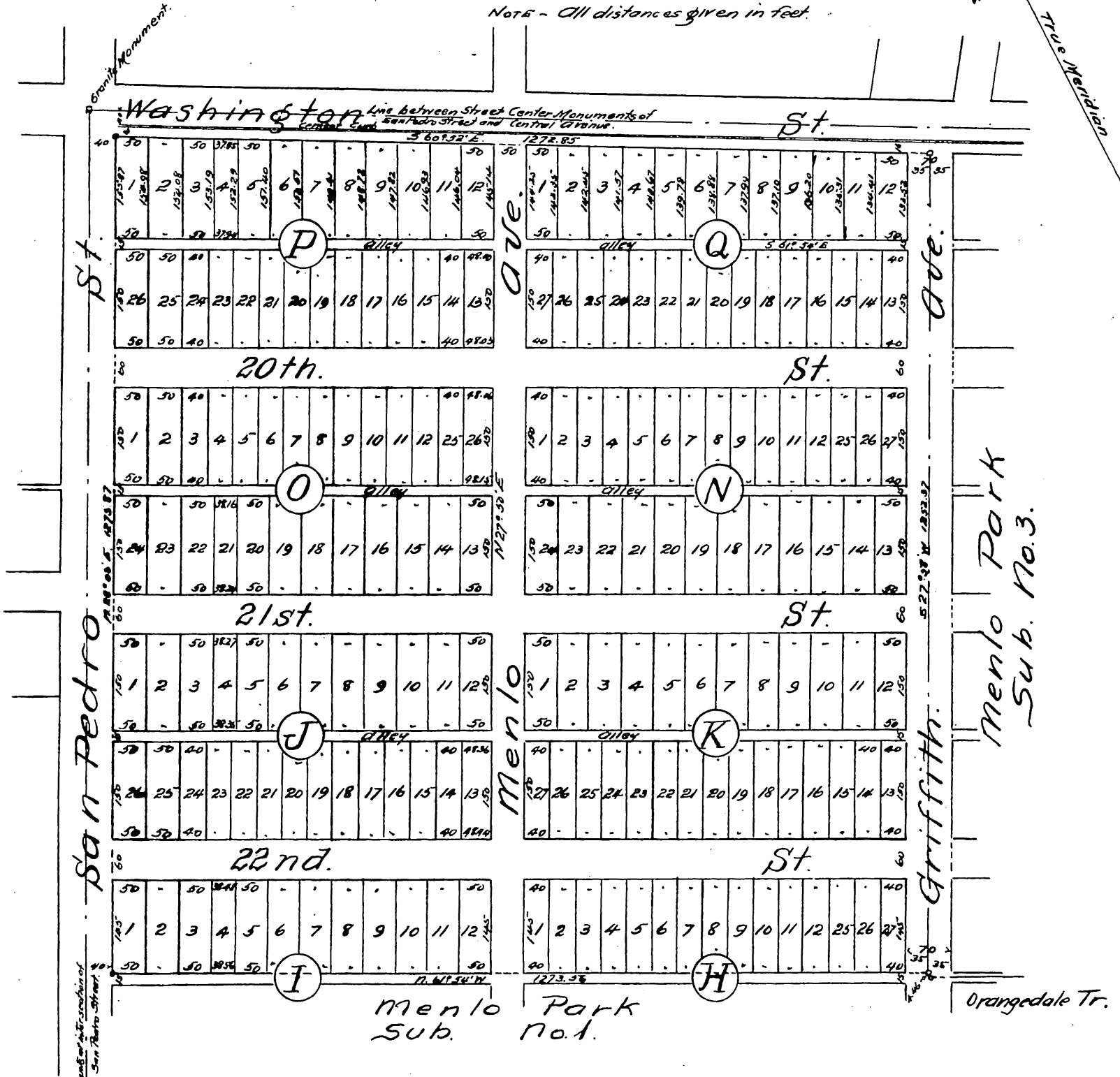


Map of Menlo Park Subdivision No. 2.

80

Los Angeles, California.
Subdivided at request of Easton, Eldridge & Co.
by E.D. Sererance, C.E.
Scale 200 Feet = 1 inch.

Note - All distances given in feet.



Line between City Street Center Monument of Washington Street and San Pedro Street with San Pedro Street.

Owner: Albert H. Quatman

A full, true, and correct copy of the original
Recorded June 3, 1896, at 36 min. past 10 O M.
at request of Easton, Eldridge Co.
E.C. Hodgman, County Recorder.
By E. T. Wright
Clerk and ex-officio Dep. Co. Rec.