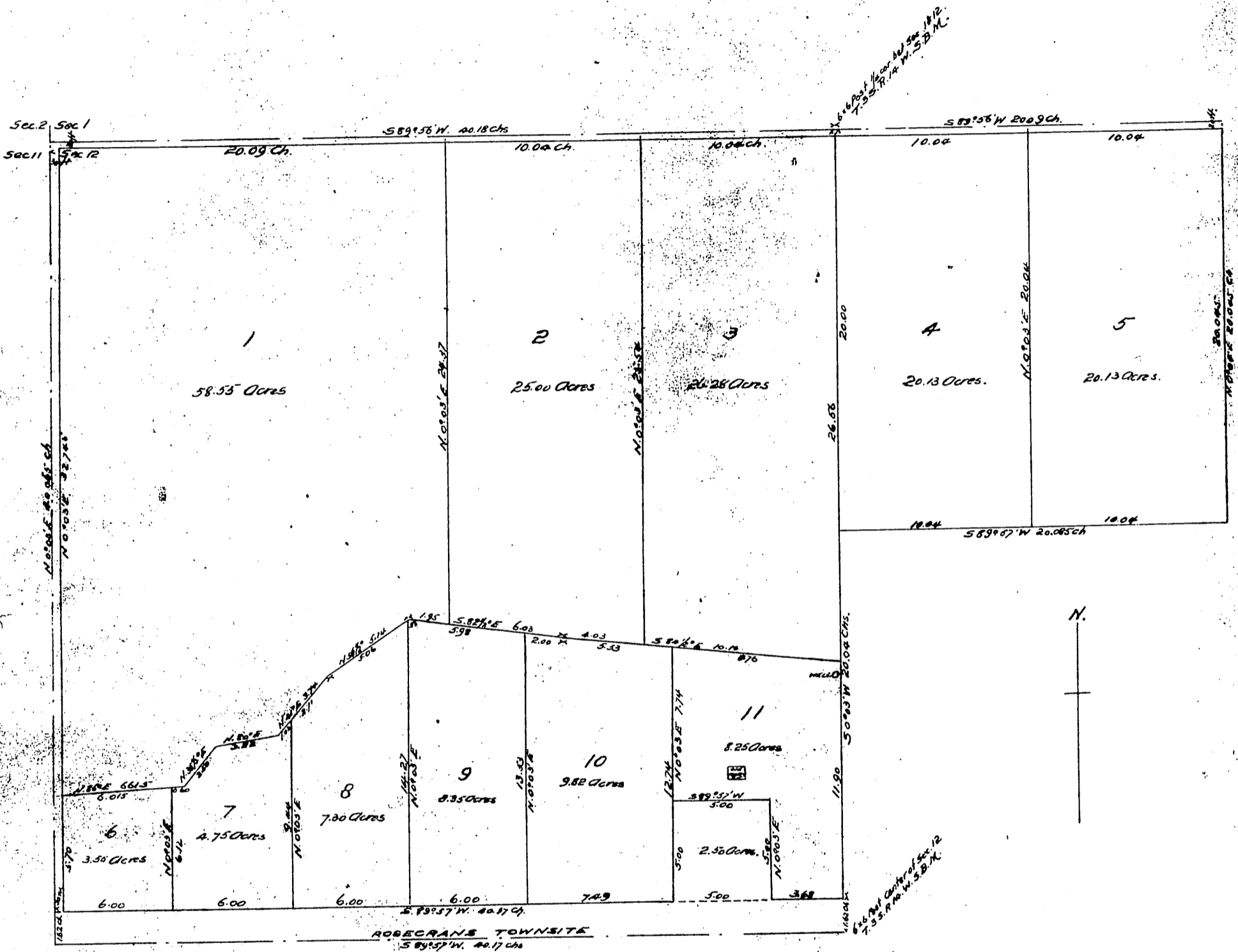


# R. W. Poindexter's Subdivision

82

of  
A portion of Sec. 12 T. 3 S. R. 14 W.  
Los Angeles Co. Cal.  
Surveyed by Pillsbury and Skinner  
May 1896

SCALE = 3 CHS = 1 IN.



Owner: R. W. Poindexter

A full, true and correct copy of the original  
 (Scale reduced to 6 chains to 1 inch)  
 Recorded June 5, 1896, at 47 min. Past 4 P.M.  
 at request of T. I. & T. Co.  
 E. C. Hodgman.  
 County Recorder  
 By E. T. Wright  
 Co. Sur. and ex-officio Dep. Co. Rec.