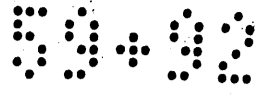


MAP



Made for the use of referees appointed by decree of the Superior Court of the State of California, for the County of Los Angeles bearing date 3d Dec. 1887 for the purpose of partitioning the realty therein described. Said map shows the subdivisions of Vineyard's property fronting on the North line of Seventh St. in the City of Los Angeles.

Scale 50 ft = One inch True courses.

John M. Baldwin, Surveyor

This map was prepared for us as above stated

Referees: J. E. Rowan

John V. Moran

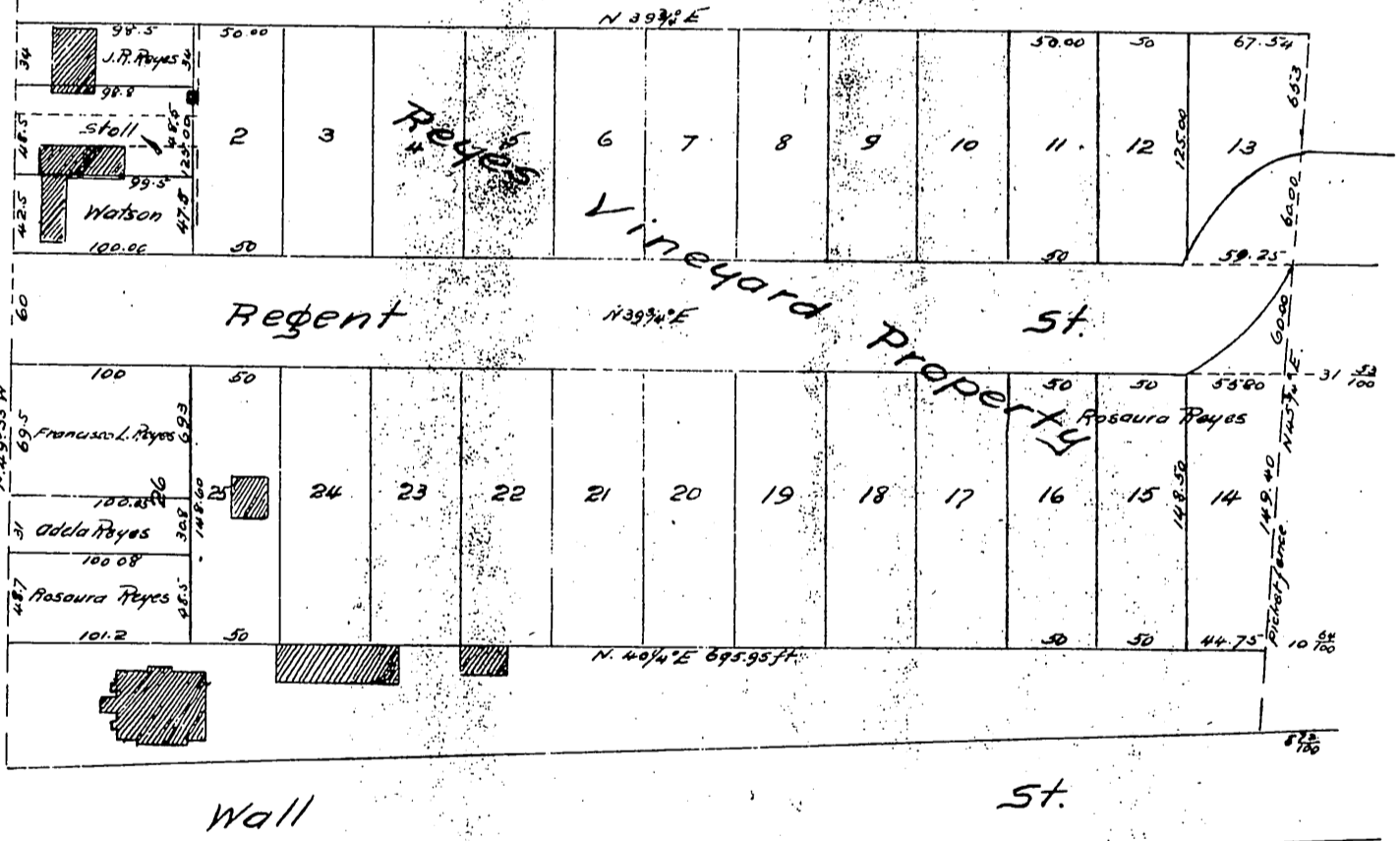
John M. Baldwin

See Case 6638 Records Superior Court of Cal. in and for Los Angeles Co. Refugio Dominguez del Reyes, Plff vs. Francisco Leon Reyes, et al. Defts

Los Angeles St.

5th

Seventh St.



A full true and correct copy of the original
 Scale reduced to 100 feet to 1 inch
 Recorded Sep 8, 1896 at 31 min past 10 AM
 at request of U. R. Reyes

E. C. Hodgman County Recorder

By E. T. Wright

Co. Sur. and ex officio Dep. Co. Rec.