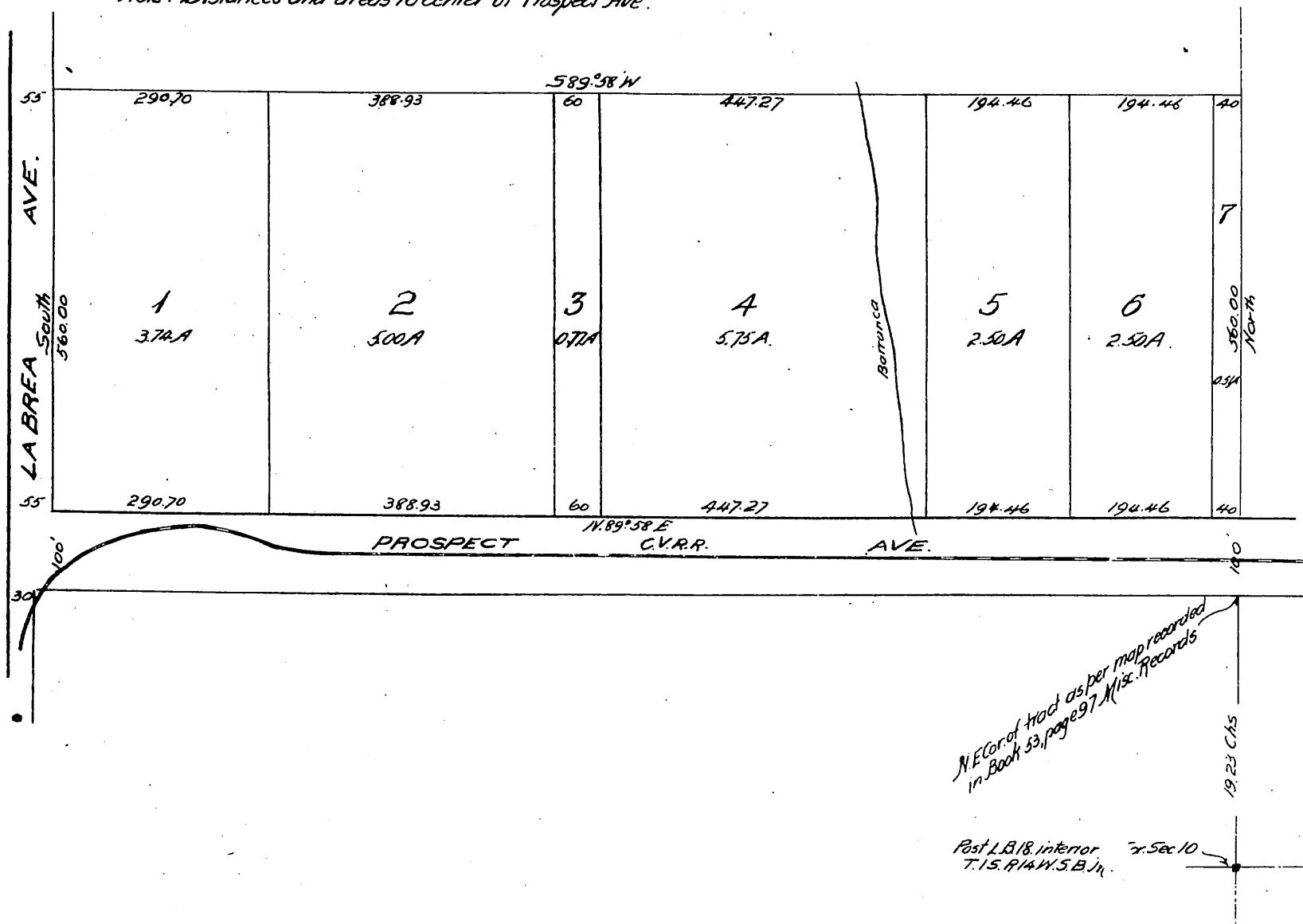




Block 'A' La Brea
being
A part of La Brea Ranch
 Los Angeles Co. Cal.
 Surveyed Sept. 26 1896.
 At request of Mrs Ida Hancock
 By Wright and Nicholson
 Scale 1 in = 2 Chs.

Note: Distances and areas to center of Prospect Ave.



Owner: Ida Hancock

A full, true and correct copy of the original
(Scale reduced to 3 Chs to 1 inch)
 Recorded Oct. 3 1896, at 40 Min. past 3 P.M.
 at request of Ida Hancock.

E.C. Hodgman, County Recorder.

By E. T. Wright.

Co. Sur. and ex-officio Dep. Co. Rec.