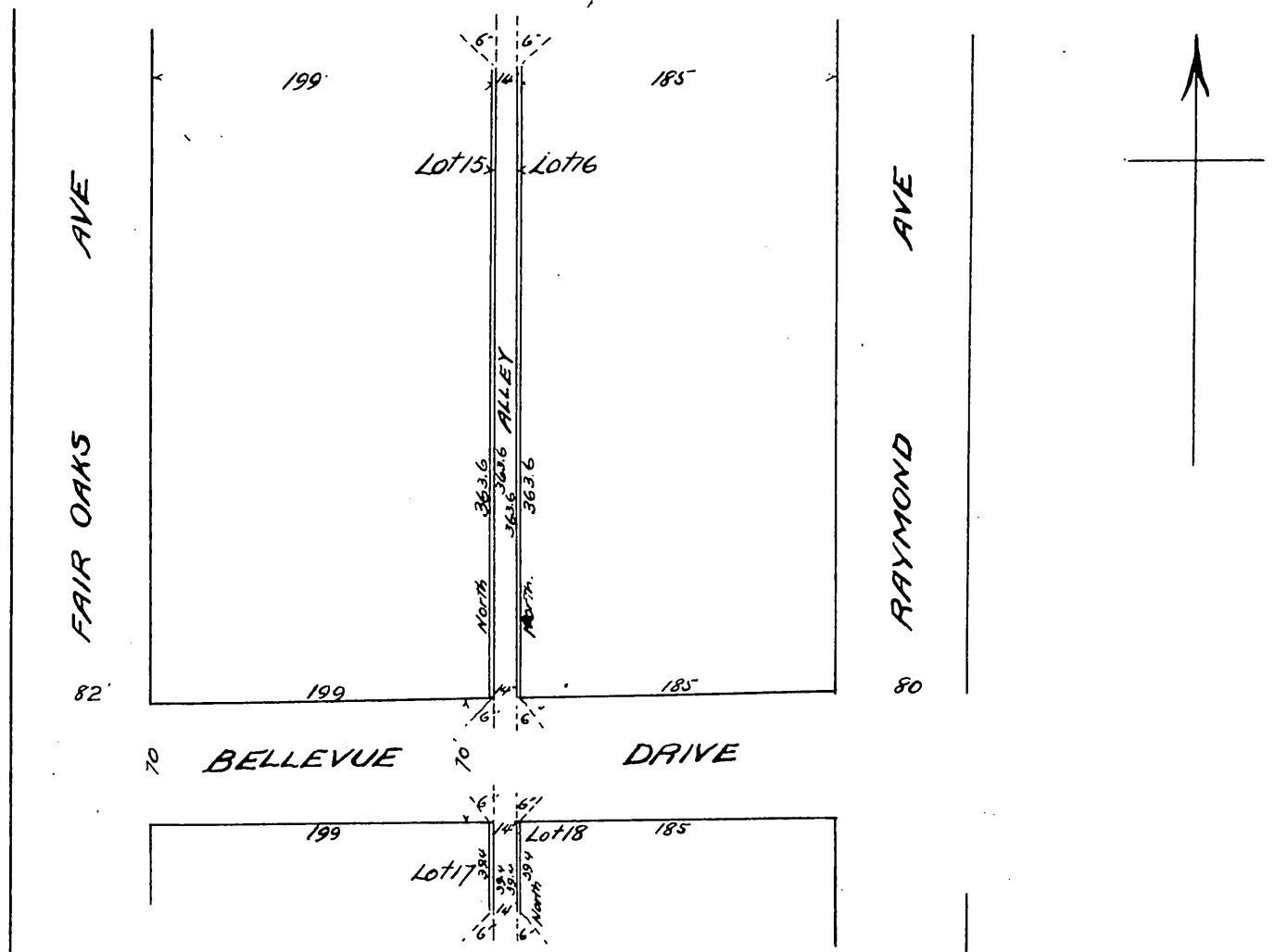


Map of the
 Horace M Dobbins Replat
 of a part of the
 Julia E. Ward Homestead Tract.
 Pasadena Los Angeles County Cal.
 Scale 80 feet per inch.
 W. R. Stevenson Surveyor.
 Dec. 26th 1898.



Owner. Horace M. Dobbins.

A full, true and correct copy of the original
 (Scale reduced to 100 feet to one inch)
 Recorded Dec. 31, 1898 at 48 Min past 4 P.M.
 at request of H. M. Dobbins
 E. C. Hodgman County Recorder.
 By Jos. H. Smith.
 Co. Sur. and ex-officio Dep. Co. Rec.