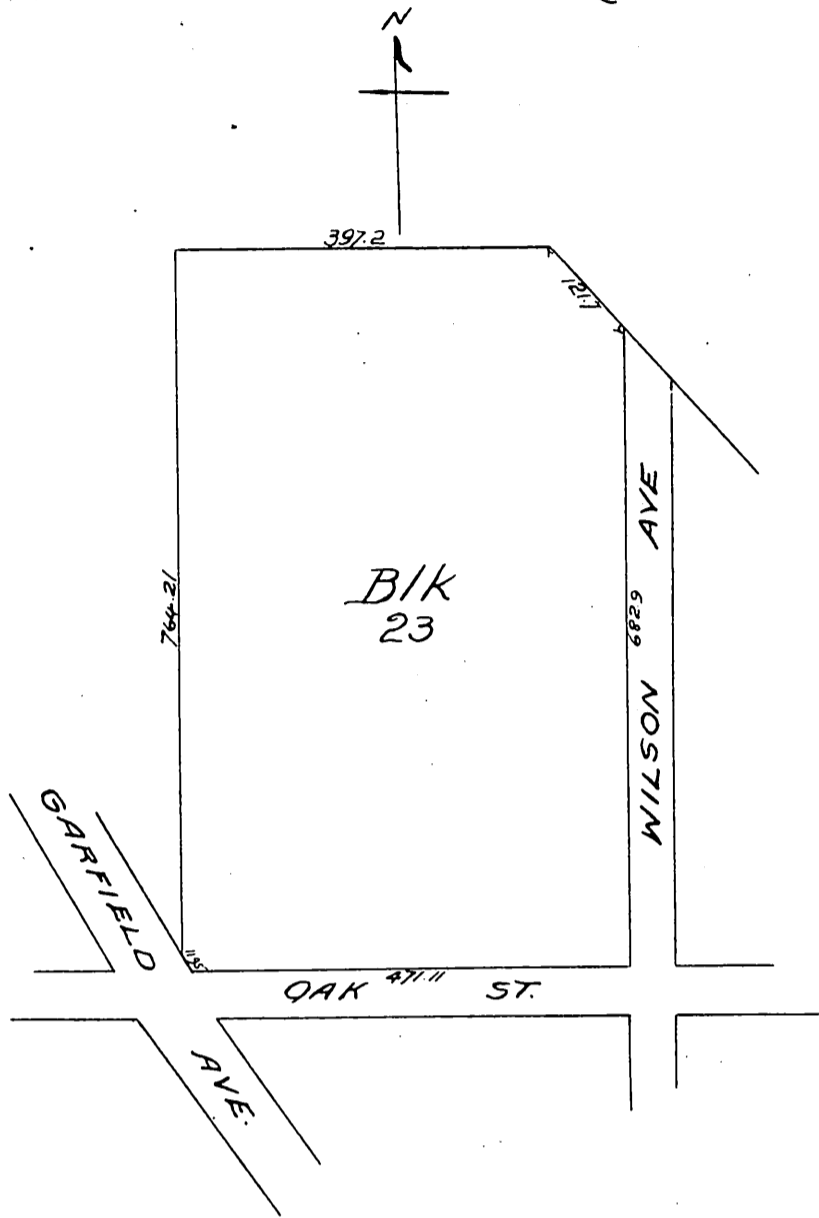


Plat of Block 23  
of the  
Stoneman Tract  
after vacation of Lots



A full, true and correct copy of the original  
(Scale reduced to 200 feet to one inch)  
Recorded Jan. 23, 1899 at 37 Min. past 9 AM.  
at request of E. F. Springer.

By *Jos. H. Smith*  
R. D. Wade County Recorder.  
Co. Sur. and ex-officio Dep. Co. Rec.