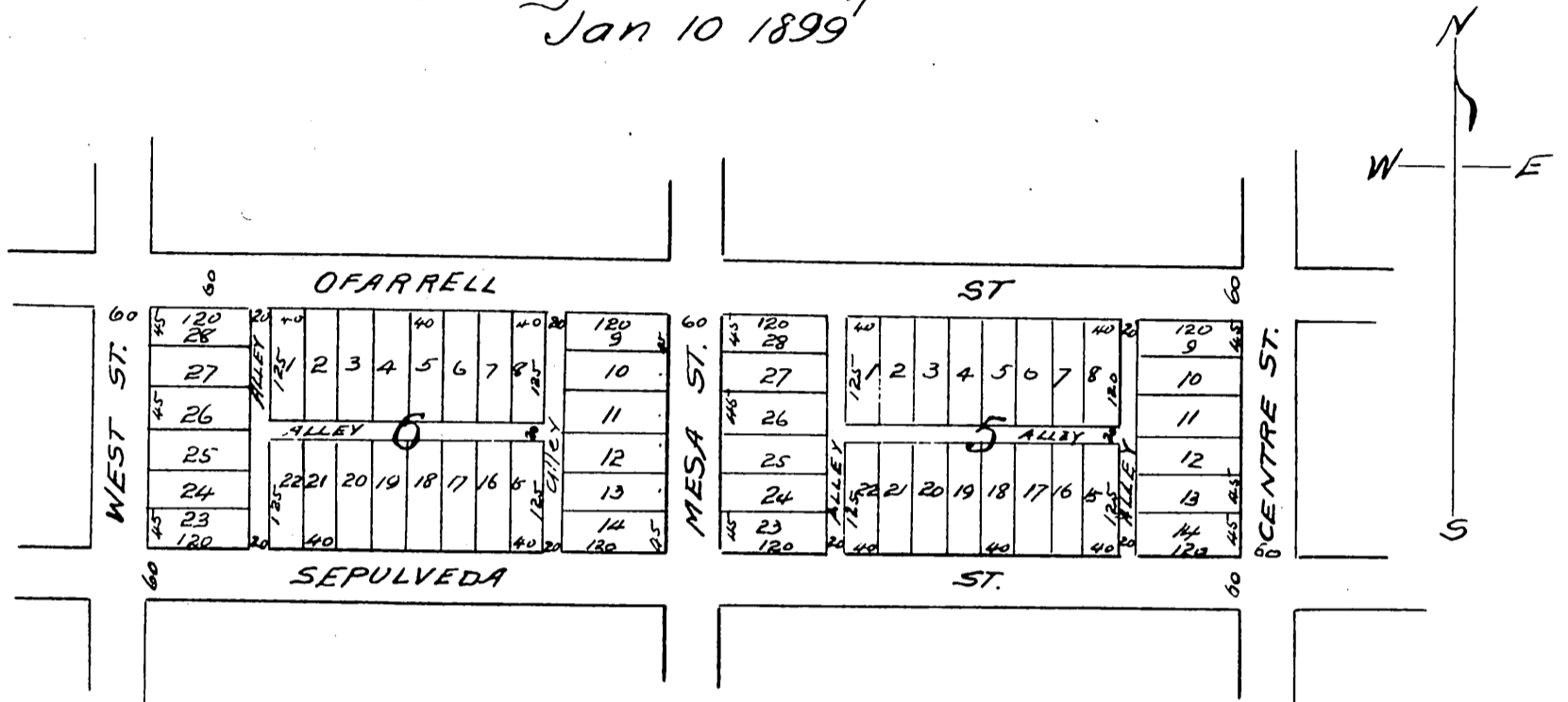


Map of
 Peck's Subdivision of Blocks 5 and 6
 of the Palos Verdes Tract.
 Being a part of Lot 1 of Lot M of the
 Rancho Los Palos Verdes.
 Los Angeles County Cal.
 Jan 10 1899



Owner Geo. H. Peck, Jr.

A full true and correct copy of the original
 (Scale reduced to 200 feet to one inch)
 Recorded Jan. 25 1899 at 11 in past 9AM.
 at request of Fidelity Ab. Co.

By J. H. Smith
 Co. Sur. and ex-officio Dep. Co. Rec.

R. D. Wade County Recorder.