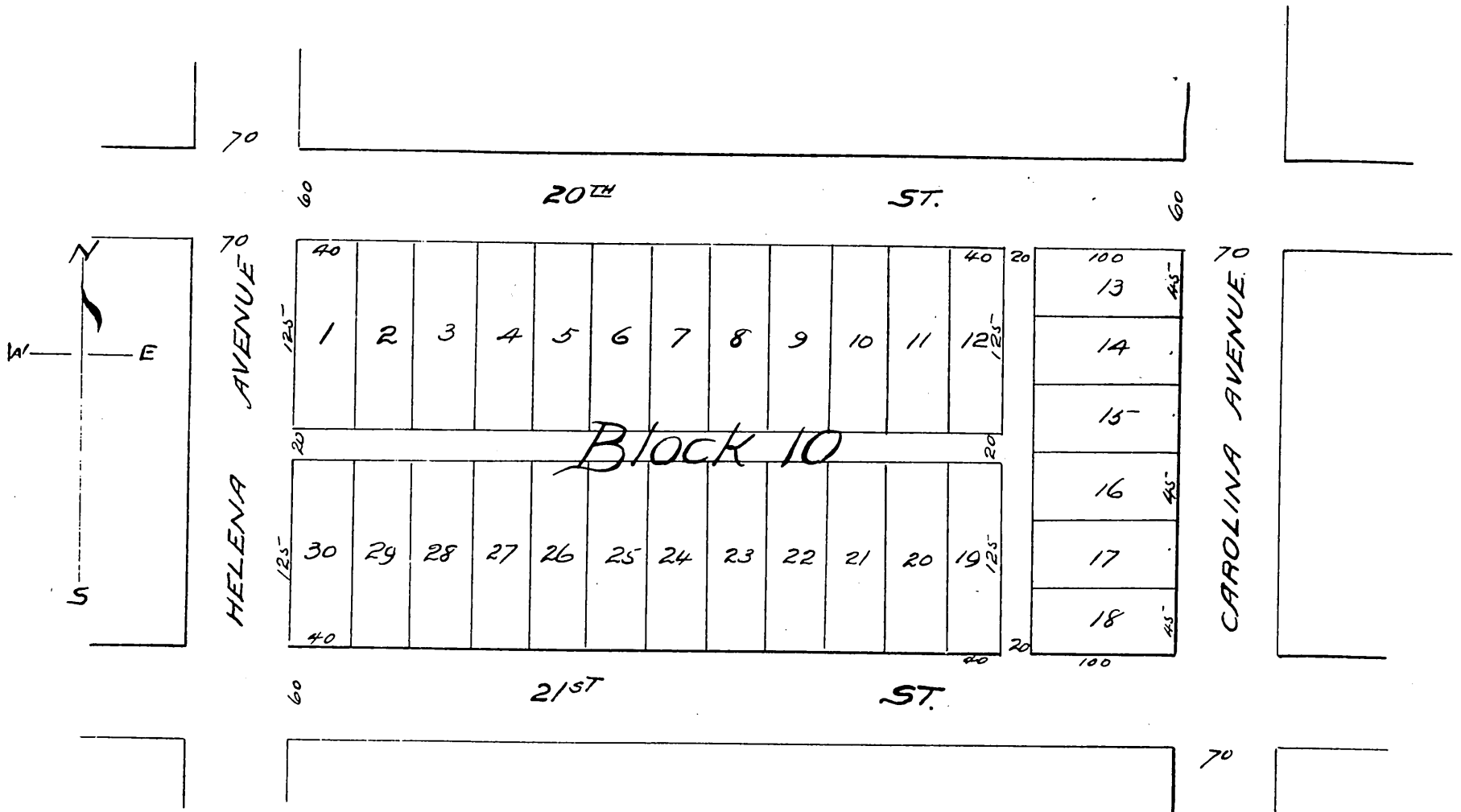


Map of  
 Peck's Subdivision of Block 10  
 of the Carolina Tract.  
 Being a part of Lot 4 of Lot M of  
 Rancho Los Palos Verdes  
 Los Angeles County, Cal.  
 Jan 26 1899.



Owner. Geo. H. Peck, Jr.

A full true and correct copy of the original  
 (Scale reduced to 100ft to one inch)

Recorded Jan 27 1899 at 52 min. past 9 A.M.  
 at request of Fidelity Abst. Co

R. D. Wade County Recorder.

By Jos. A. Smith

C. Sur. and ex-officio Dep. Co. Rec.