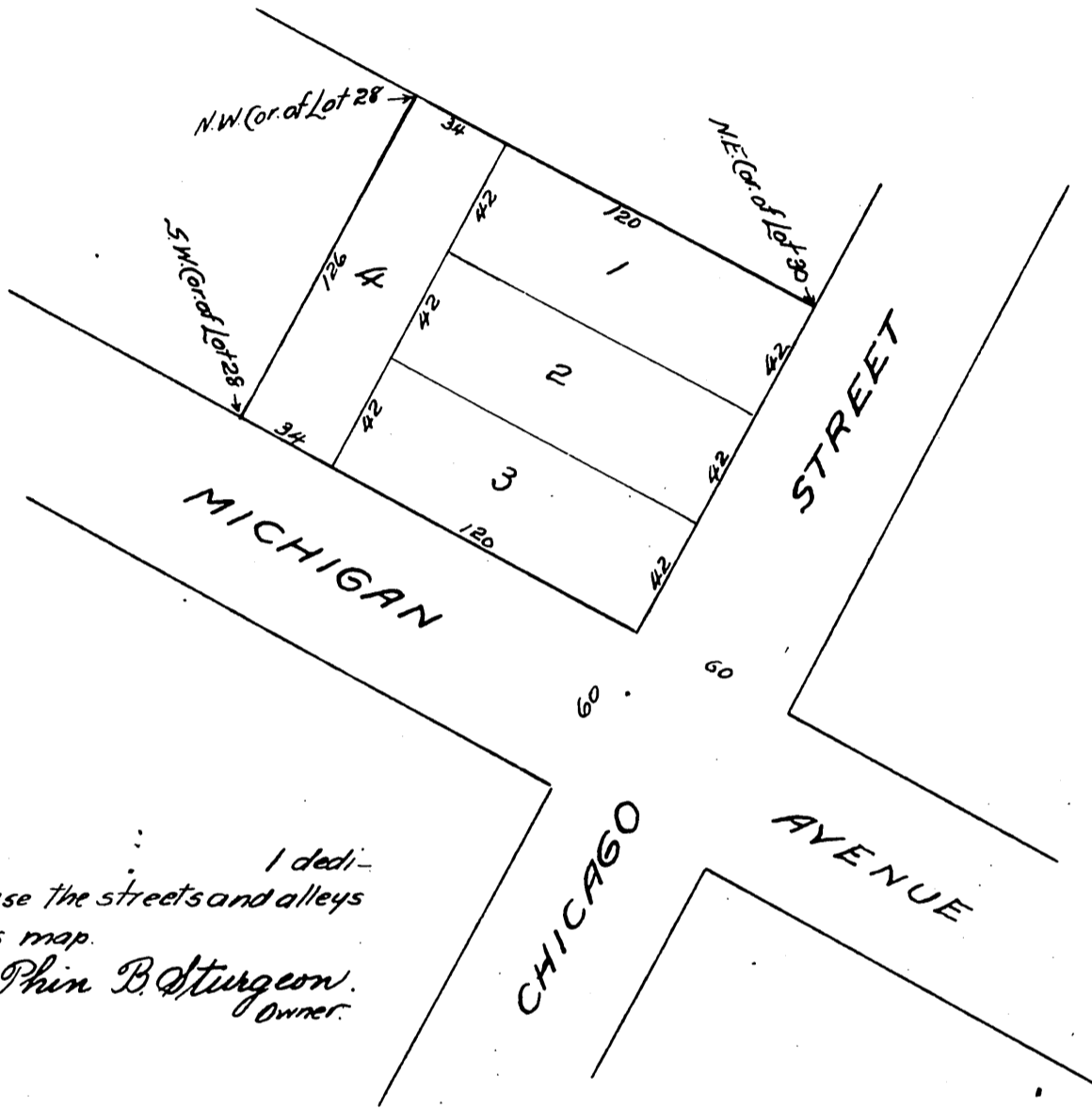


7266

Sturgeon's Subdivision of Lots 28, 29 and 30 of Spence's Addition to Boyle Heights L.A. City, Cal.

as per map recorded in Book 5 Page 503
Miscellaneous Records.

Scale 40' to 1"



I dedicate for public use the streets and alleys as shown on this map.

Phin B. Sturgeon.
Owner.

A full, true and correct copy of the original
(Scale reduced to 80 feet to one inch)
Recorded Jul. 8. 1899. at 2 Min. past 12 P.M.
at request of Phin. B. Sturgeon.

R. D. Wade, County Recorder.

By Jos. H. Smith.

Co. Sur. and ex officio Dep. Co. Rec.