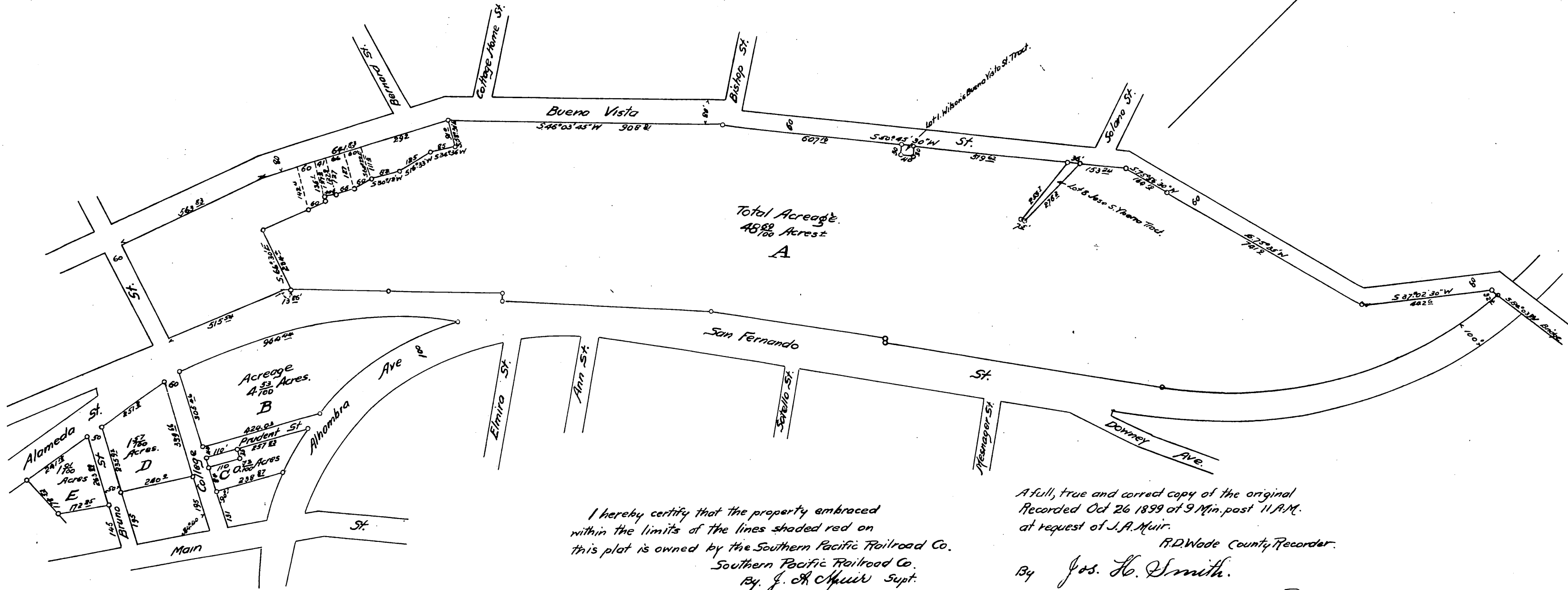


# Freight Depot Tract Los Angeles, California.

Scale 300 Ft = 1 inch.



I hereby certify that the property embraced within the limits of the lines shaded red on this plat is owned by the Southern Pacific Railroad Co.  
Southern Pacific Railroad Co.  
By J. A. Muir Supt.

A full, true and correct copy of the original Recorded Oct 26 1899 at 9 Min. past 11 A.M. at request of J.A. Muir.  
R.D. Wade County Recorder.  
By Jos. H. Smith.  
Co. Sur. and ex-officio Dep. Co. Rec.

