



MAP of the

25

Coffman Partition

Being a part of the

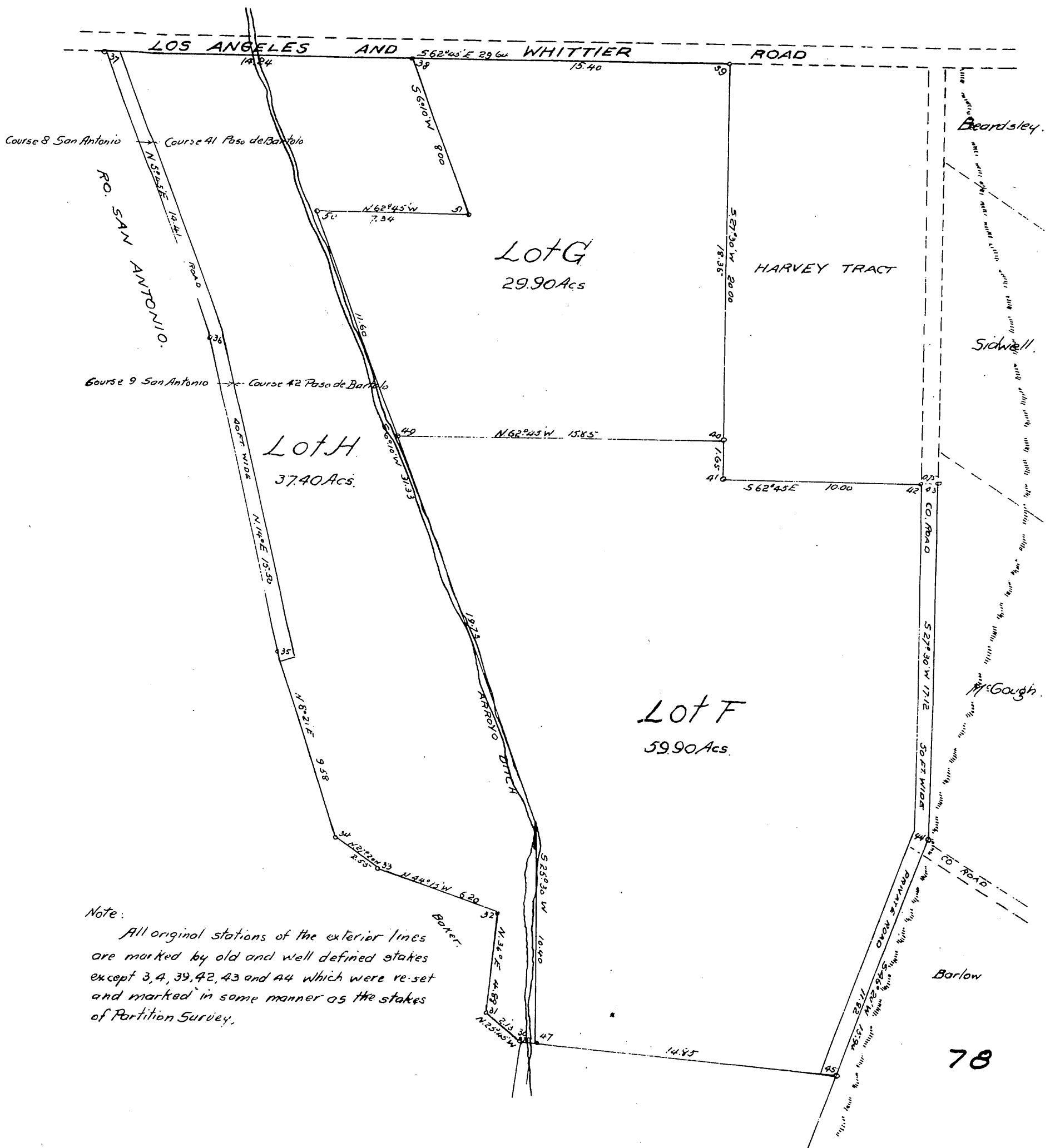
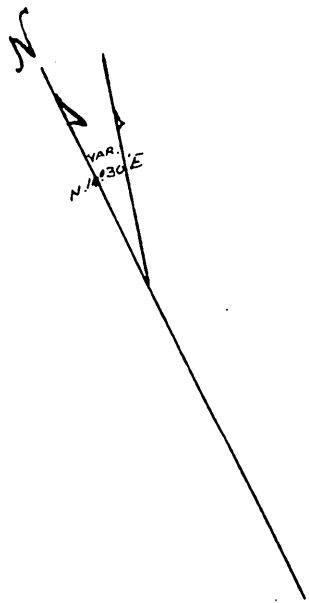
Ro. Paso de Bartolo

Los Angeles Co. Cal.

Scale 4 chs = 1 inch.

Su. 24ed Dec. 1899

by C.C. Brown.



Note:
All original stations of the exterior lines are marked by old and well defined stakes except 3, 4, 39, 42, 43 and 44 which were re-set and marked in some manner as the stakes of Partition Survey.