

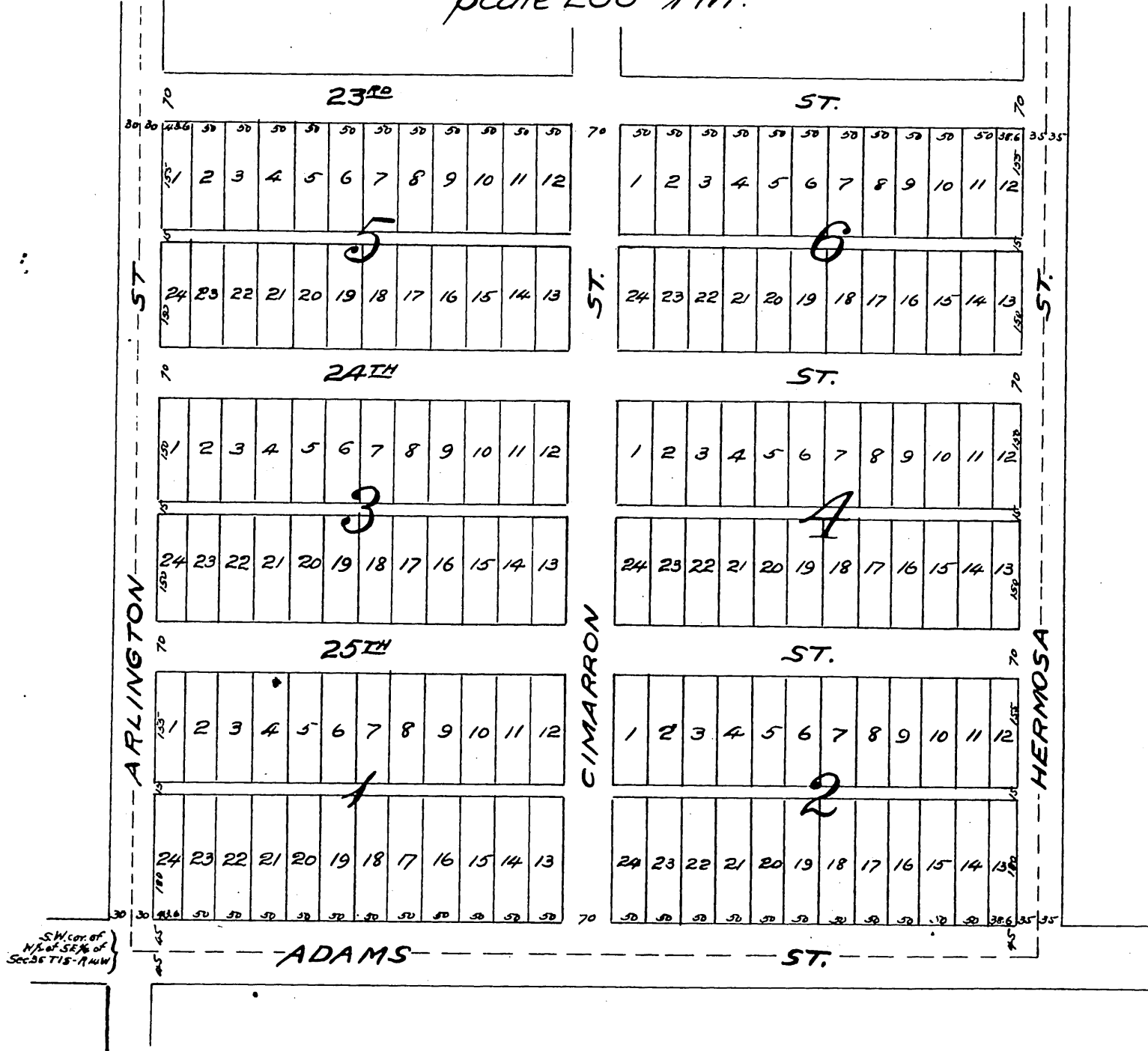
70+50

Kinney Heights Tract.

50

Being a Subdivision of a part of
the West half of the South East quar-
ter of Section 35 Twp. 1 S.-R. 14 West
S.B.M. in the City of Los Angeles, Cal.

Scale 200' = 1 in.



I dedicate for public use
the Streets and Alleys shown thereon.

Carlisle Christian Home
By *M. G. McShoon*, President.
Attest: *S. P. Mulford* Secretary.
Abbot Kinney

A full, true and correct copy of the original
Recorded Mar. 7-1900 at 1 Min. past 2 P.M.
at request of Abbot Kinney.

R. D. Wade, C. Recorder.
By *Jos. H. Smith*
Co. Sur. and ex-officio Dep. Co. Rec.

78