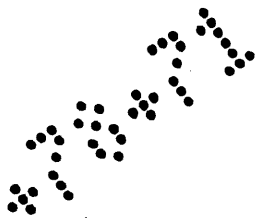


Edwin Ward's Re-plat

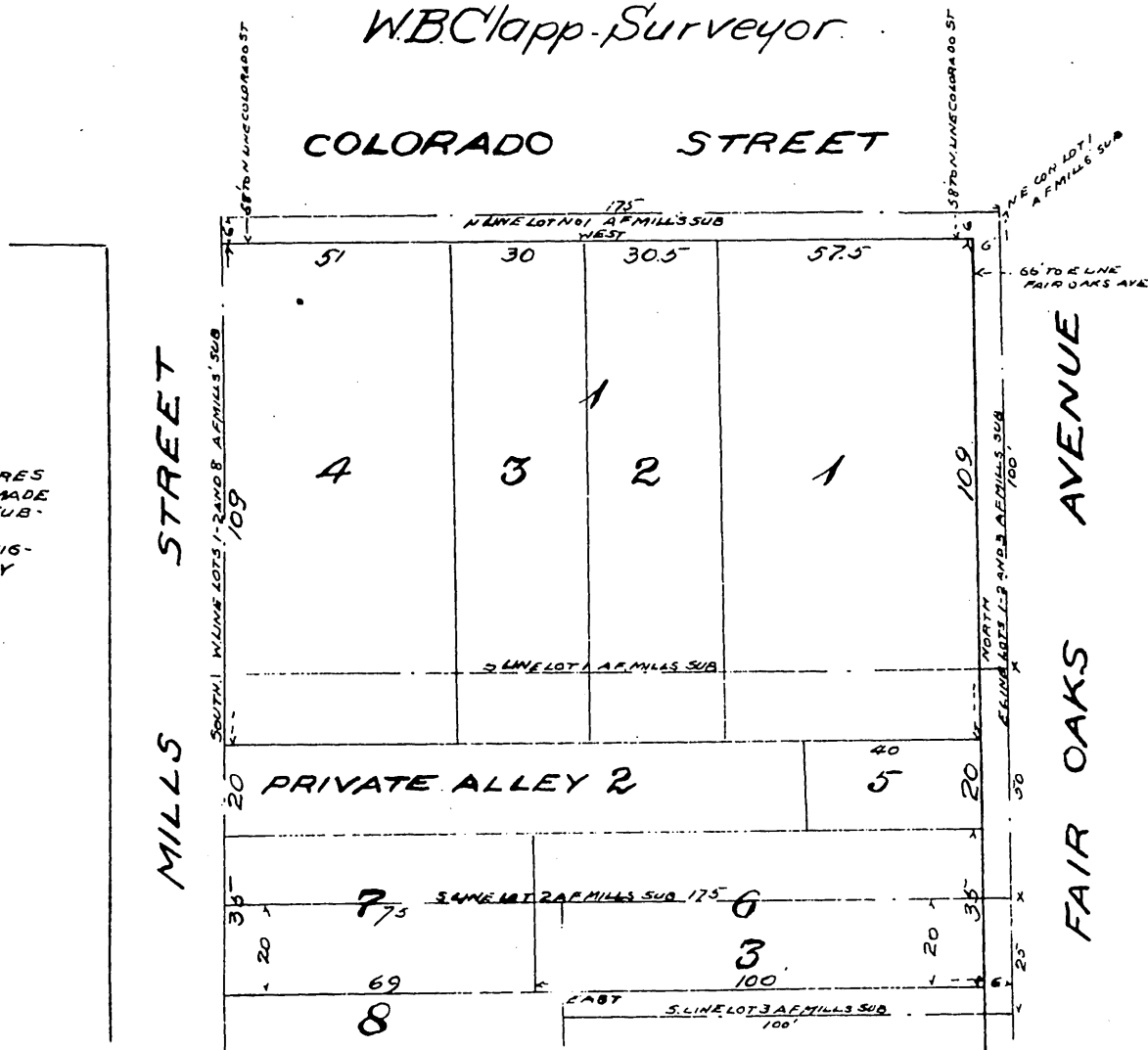
of Lots No's 1 and 2 and North 20 feet of
 Lots No's 3 and 8 AF Mills Sub. of the North
 1/2 of Lot No 6 Berry and Elliott Tract
 as recorded in Book 9 Page 39 Miscel-
 -aneous Records, Los Angeles County
 California.

Scale 1 in - 20 feet.

W.B. Clapp - Surveyor



NOTE.
 THE RED LINES AND FIGURES
 SHOW THE SUBDIVISION AS MADE
 UPON THE MAP A F MILLS SUB-
 DIVISION.
 THE BLACK LINES AND FIG-
 URES SHOW THE RE-PLAT BY
 EDWIN WARD.



I dedicate for public use the streets and
 alleys as shown on this map.

Georgina J. Ward
 Guardian of the person and Estate
 of Edwin Ward - an insane person.

A full, true and correct copy of the original
 (Scale reduced to 40 feet to one inch)
 Recorded May 25 - 1900 at 44 Min. past 4 P.M.
 at request of G. J. Ward - Guardian.
 R. D. Wade Co. Recorder.
 By *Jos. H. Smith*
 Co. Surv. and up off. 10 Yap Co. Rec.