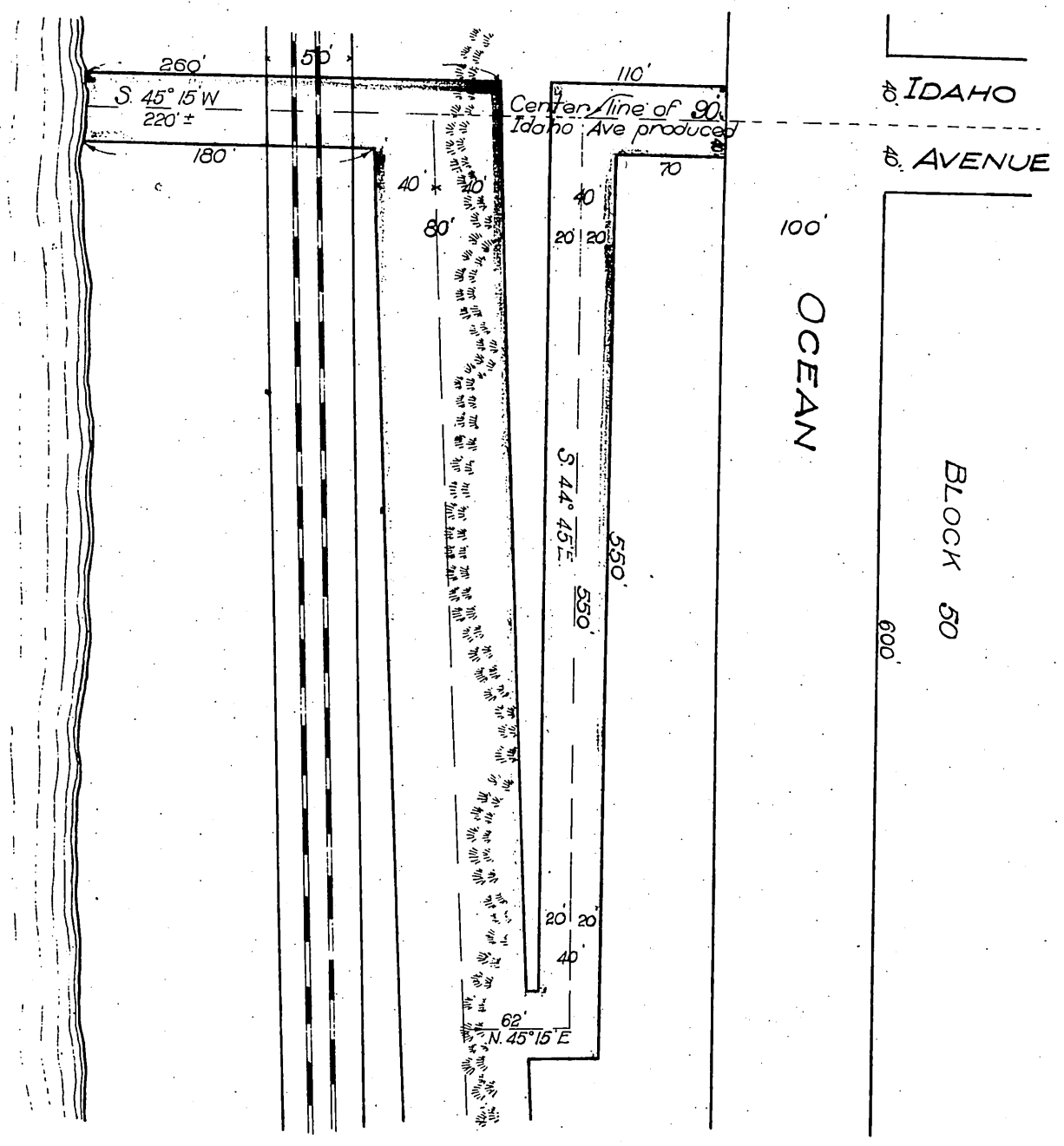
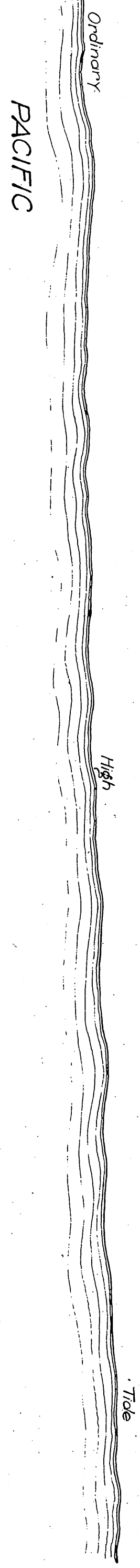


MR. 238 - 238

APR 1970

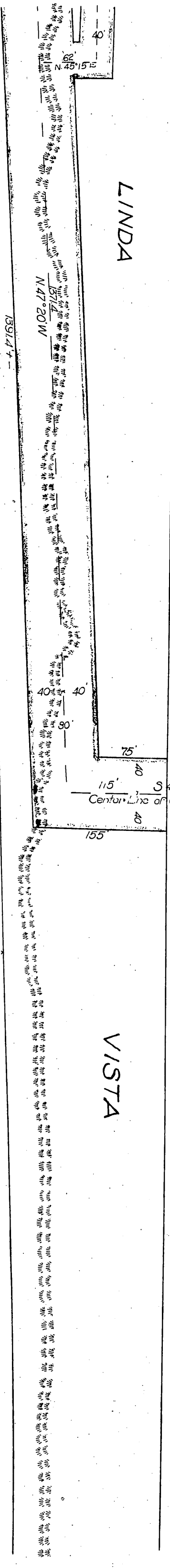
Special Ordinance No 601





SOUTHERN

PACIFIC R. R.

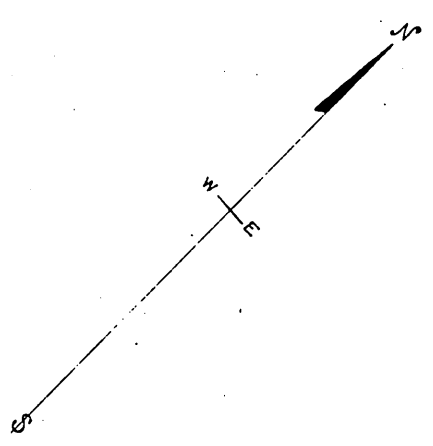


WASHINGTON AVENUE

BLOCK 75
600'

CALIFORNIA AVENUE
100'

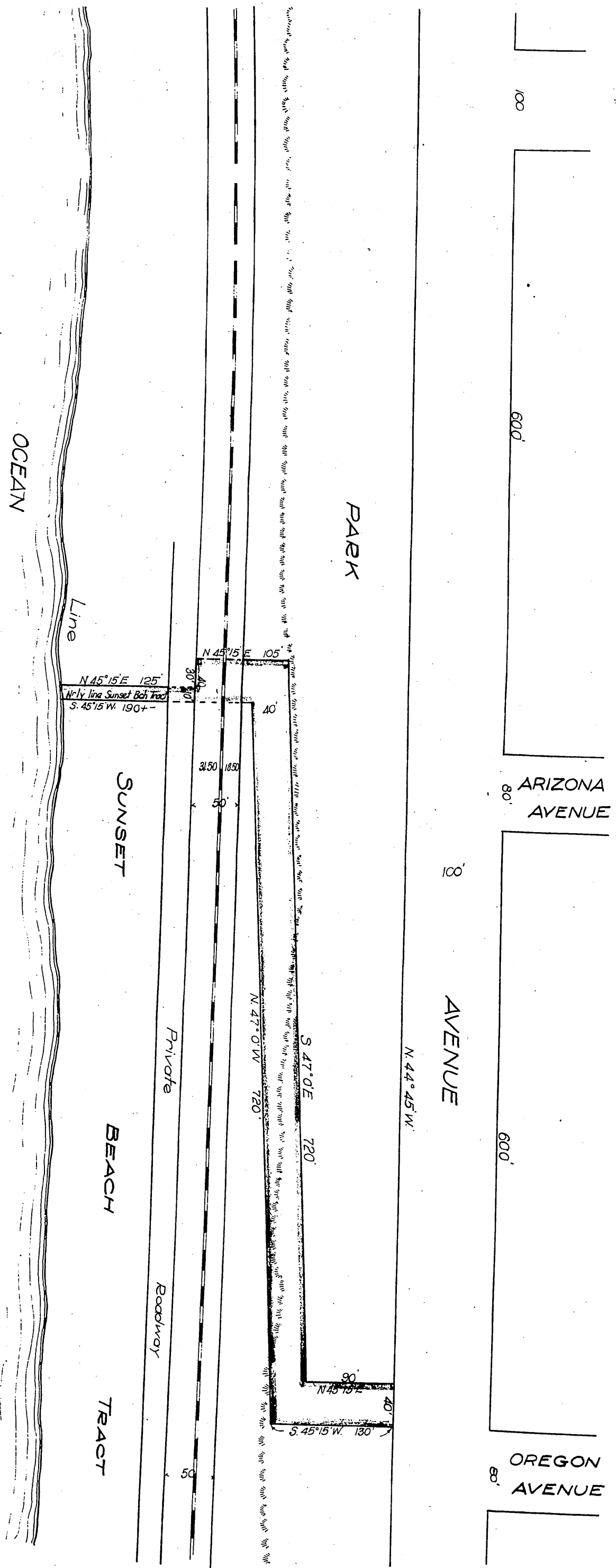
BLOCK 98
600'



MAP SHOWING
 The Public Streets of the City of Santa Monica lying southwesterly of Ocean Avenue & between Utah Avenue & the northwest line of Idaho Avenue as approved by the Board of Trustees of the City of Santa Monica the 11th day of July, 1904 & drawn by Thos. H. James, C.E. City Engineer. The said public streets are shown bounded by a colored border

March 22nd 1915
 Santa Monica Cal
 John A. Morison
 City Engineer

MR. 238-240



Recorded May 22, 1915

19-25