

PROPERTY OF  
**SOUTHERN CALIFORNIA EDISON COMPANY LTD.**

MAP NO. 8

SHEET 1 OF 7 SHEETS

COUNTY RECORDERS COPY

RECORDED  
OCT 8 1934  
1 10 AM  
BOOK 3  
PAGE 1  
Official Maps  
LOS ANGELES COUNTY, CAL.  
S. J. Metcalfe  
Rec

PARTLY IN THE CITY OF REDONDO BEACH AND THE CITY OF EL SEGUNDO AND PARTLY IN THE COUNTY OF LOS ANGELES

Being a subdivision of a portion of lots 2,3,4,9 in Section 20, T.3S., R.14W. in the Rancho Sausal Redondo as shown on a map of Partition of Property formerly of the Redondo Land Co. and filed as Recorders Filed Map No. 140; all of lots 115, 116 and a portion of lots 117, 118, 119, 120, 121, 134, 135, 136, 137, 138, 139 of Tract No. 7191 recorded in book 81 page 96 of Maps; a portion of the S.W. 1/4 of Section 17, a portion of Section 18 and a portion of the S.W. 1/4 of the S.W. 1/4 of Section 7, T.3S., R.14 W. in the Rancho Sausal Redondo; lots 317 to 326 both inclusive, lots 335 to 338 both inclusive, lots 364 to 367 both inclusive, lots 396 to 402 and lots 411 to 419 both inclusive in Block 123 of El Segundo Sheet 8 recorded in book 22 pages 106, 107 of Maps; a portion of lots 6,7,8,9 in Block 107, a portion of lots 7,8,9,10 in Block 112 and all of lots 5,6 in Block 113 of El Segundo Sheet 5 recorded in book 20 pages 114, 115 of Maps. Also a portion of lots 339, 340, 368, 369, 395, and 420 in Block 123 of El Segundo Sheet 8 recorded in book 22 pages 106, 107 of Maps. Records of Los Angeles County, State of California.

Los Angeles  
J. E. Rockhold

California

November 1933  
County Surveyor

Scale 1 Inch = 200 Feet

The bearing of Center Street as shown on Official Map No. 10 filed in Book 1 Page 66 of Official Maps was used as the base of bearings shown upon this map.

This map was prepared from a survey made under the supervision of Geo. H. Starbuck, Licensed Surveyor and Engineer for the Southern California Edison Company Ltd., between March 1930 and May 1932

We hereby certify that on the 24<sup>th</sup> day of Sept. 1934, the within map was approved and adopted as an official map by the Board of Supervisors of the County of Los Angeles by resolution duly adopted, as follows, to wit:

WHEREAS, The Board of Supervisors of the County of Los Angeles, State of California, pursuant to the provisions of Section 3658a of the Political Code of the State of California, did, by an order adopted on the 7<sup>th</sup> day of December 1931, direct the preparation by the County Surveyor of an Official Map of portions of the property of Southern California Edison Company Ltd.

NOW THEREFORE be it resolved that said map entitled "Property of Southern California Edison Company Ltd. Map No. 8" be and the same is hereby approved and adopted.

The foregoing resolution was, on the 24<sup>th</sup> day of Sept. 1934, adopted by the Board of Supervisors of the County of Los Angeles, State of California.

ATTEST: L. E. Lampton  
County Clerk and ex-officio Clerk of the Board of Supervisors of the County of Los Angeles.

by Mame O'Beatty  
Deputy

John Quinn  
Chairman of the Board of Supervisors  
Supervisor 5<sup>th</sup> District

Frank A. Fletcher  
Supervisor 1<sup>st</sup> District

Donald McDermogh  
Supervisor 2<sup>nd</sup> District

H. M. J. Jaine  
Supervisor 3<sup>rd</sup> District

Roger Jessup  
Supervisor 4<sup>th</sup> District

L. E. Lampton  
County Clerk and ex-officio Clerk of the Board of Supervisors of the County of Los Angeles

by Mame O'Beatty  
Deputy

Sht. 23  
Sht. 25  
A-148  
A-153  
A-357

Recorded Oct. 8, 1934

# PROPERTY OF SOUTHERN CALIFORNIA EDISON COMPANY LTD.

COUNTY ENGINEERS COPY

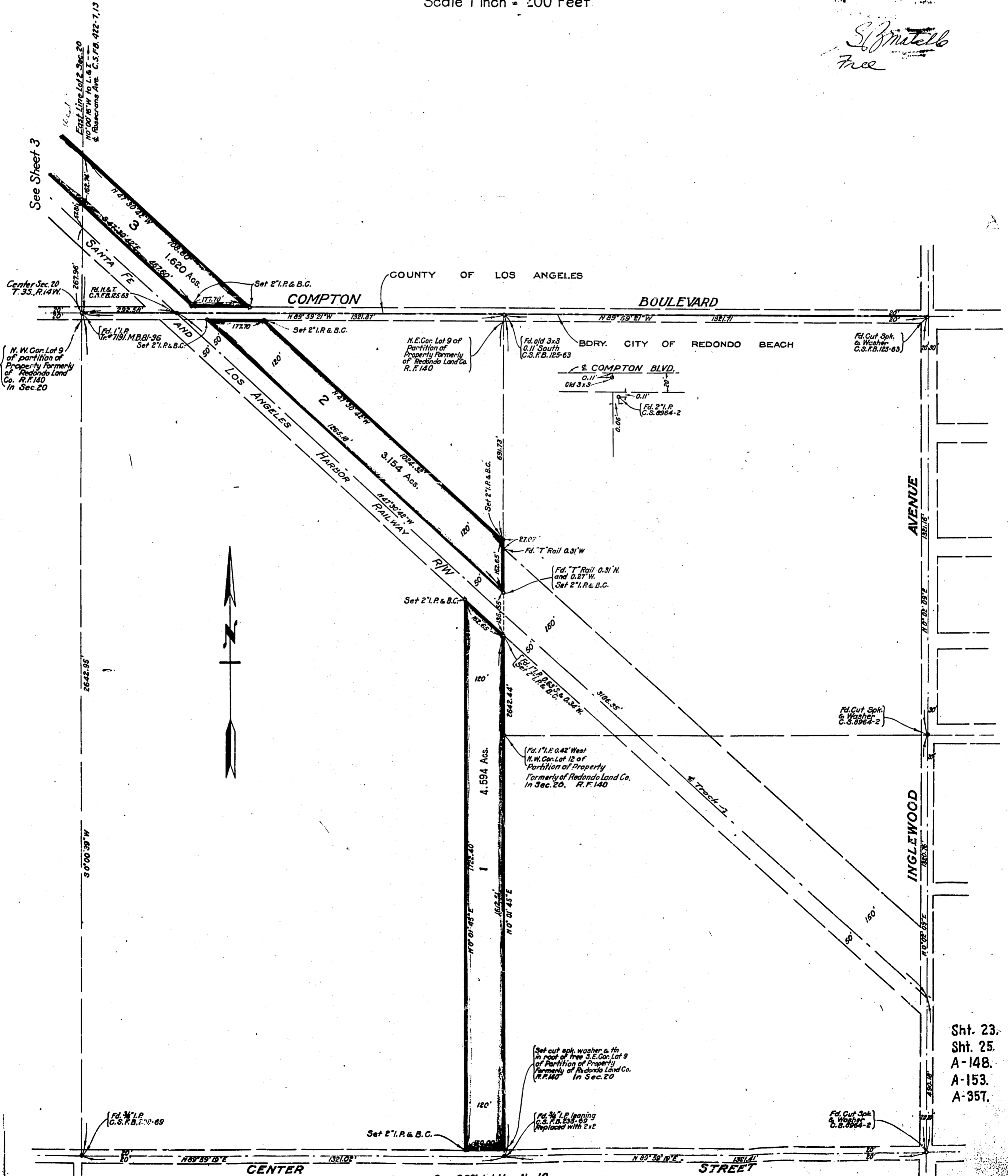
MAP NO. 8

SHEET 2 OF 7 SHEETS

Scale 1 Inch = 200 Feet

OCT 8 1934  
10 AM  
3  
2  
Official Maps

*S. J. Mitchell*  
Free



See Official Map No. 10  
O.M. 1 page 56

Note: Set 2" I.P. & B.C. - Set 2" Iron Pipe and Southern California Edison Company Ltd. Brass Cap approximately 8" to 12" below surface.

Recorded Oct. 8, 1934

Sht. 23.  
Sht. 25.  
A-148.  
A-153.  
A-357.



# PROPERTY OF SOUTHERN CALIFORNIA EDISON COMPANY LTD.

## MAP NO. 8

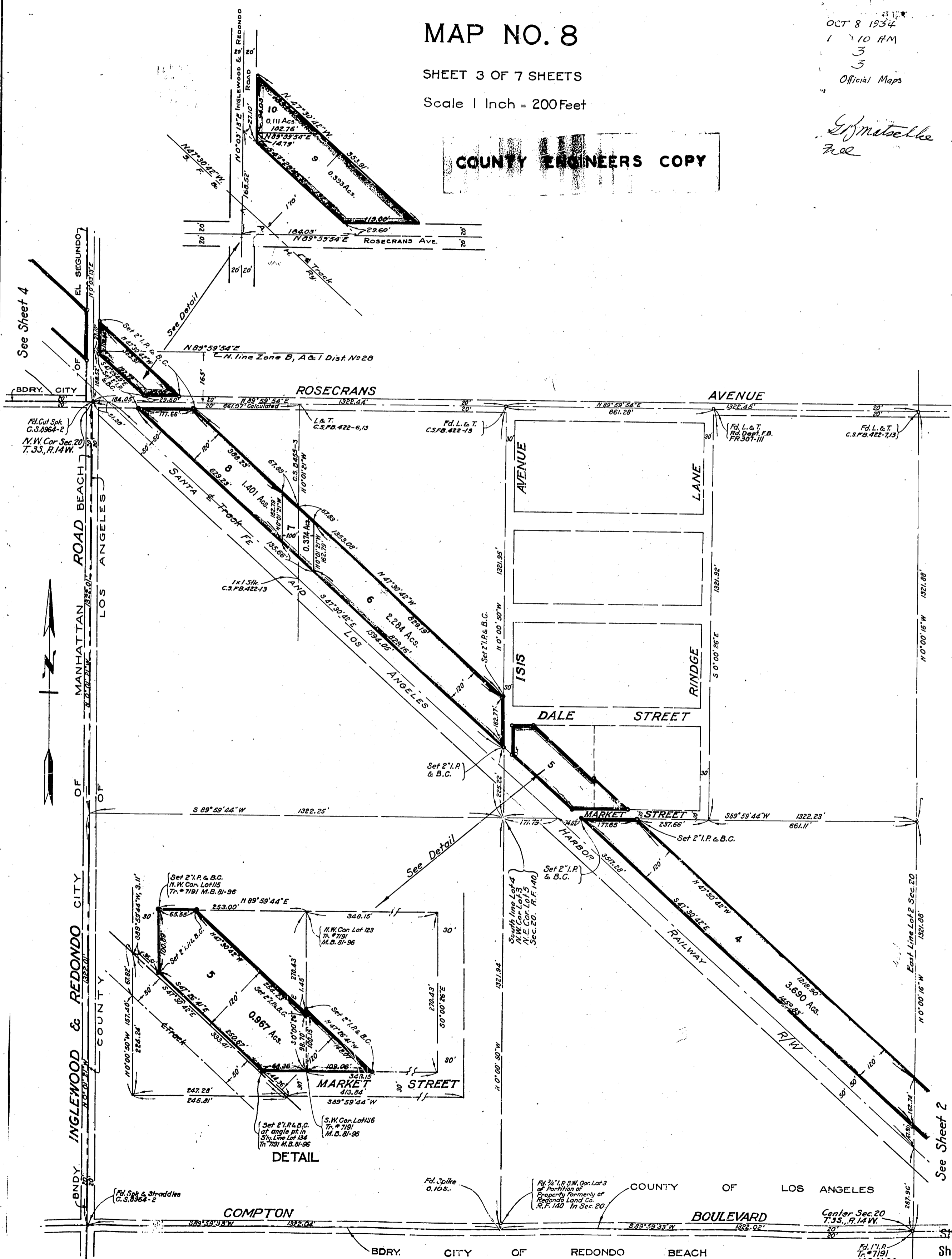
SHEET 3 OF 7 SHEETS

Scale 1 Inch = 200 Feet

OCT 8 1934  
1 10 AM  
3  
3  
Official Maps

*J. Matzelke*  
Rec

COUNTY ENGINEERS COPY

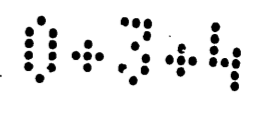


Note: Set 2" I.P. & B.C. = 2" Iron Pipe and Southern California Edison Company Ltd. Brass Cap set approximately 8" to 12" below surface.

Recorded Oct. 8, 1934.

Sht. 23  
Sht. 25  
A-148  
A-153  
A-357 3

3-4  
4



# PROPERTY OF SOUTHERN CALIFORNIA EDISON COMPANY LTD.

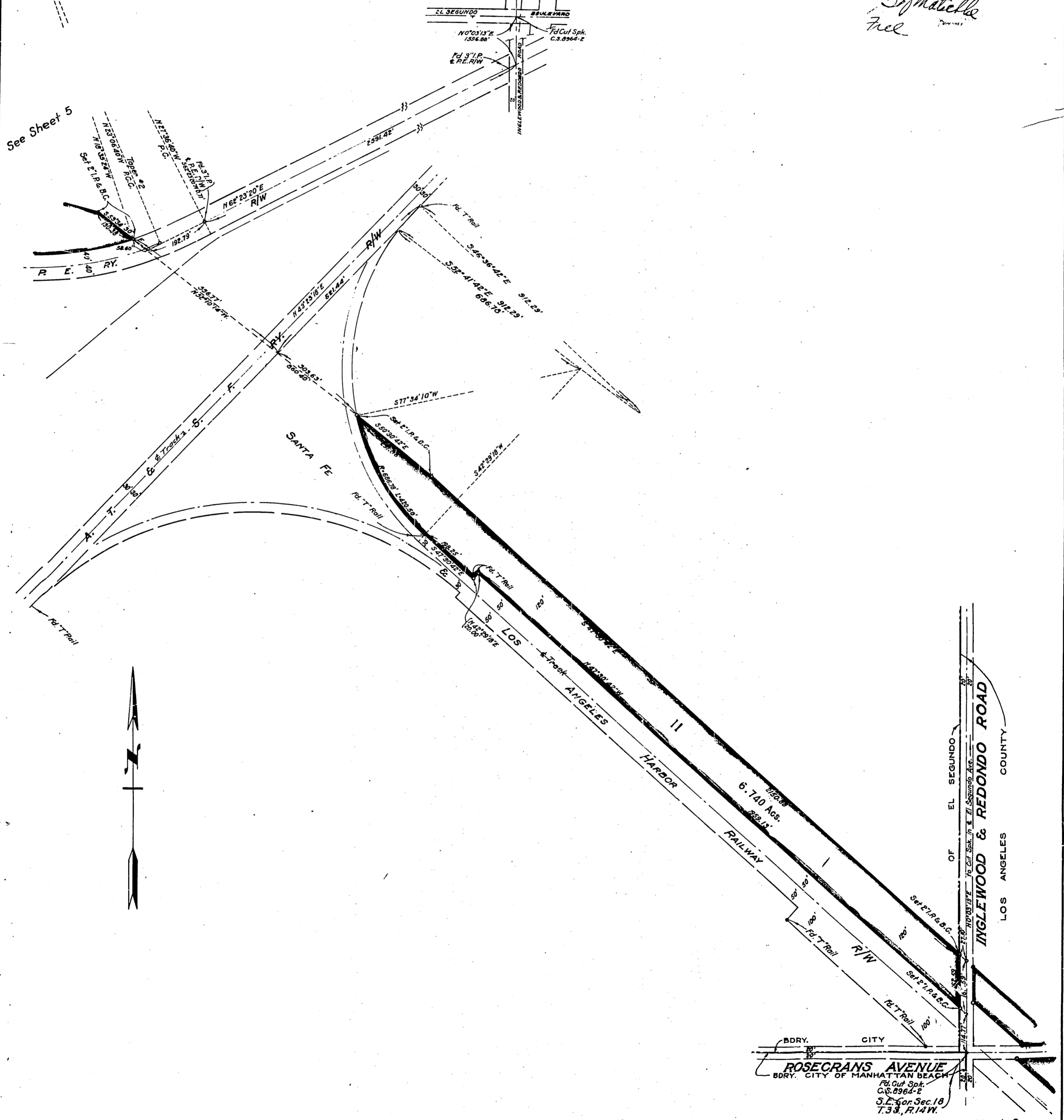
**COUNTY ENGINEERS COPY**

**MAP NO. 8**

SHEET 4 OF 7 SHEETS

Scale 1 Inch = 200 Feet

OCT 8 1934  
1 10 AM  
3  
4  
Official Maps  
*S. Matella*  
Fred



Note: Set 2" I.P. & B.C. • 2" Iron Pipe and Southern California Edison Company Ltd. Brass Cap set approximately 8" to 12" below surface.

Sht. 23  
Sht. 25  
A-148  
A-153  
A-357

Recorded Oct. 8, 1934.

3

COUNTY ENGINEERS COPY



5

# PROPERTY OF SOUTHERN CALIFORNIA EDISON COMPANY LTD.

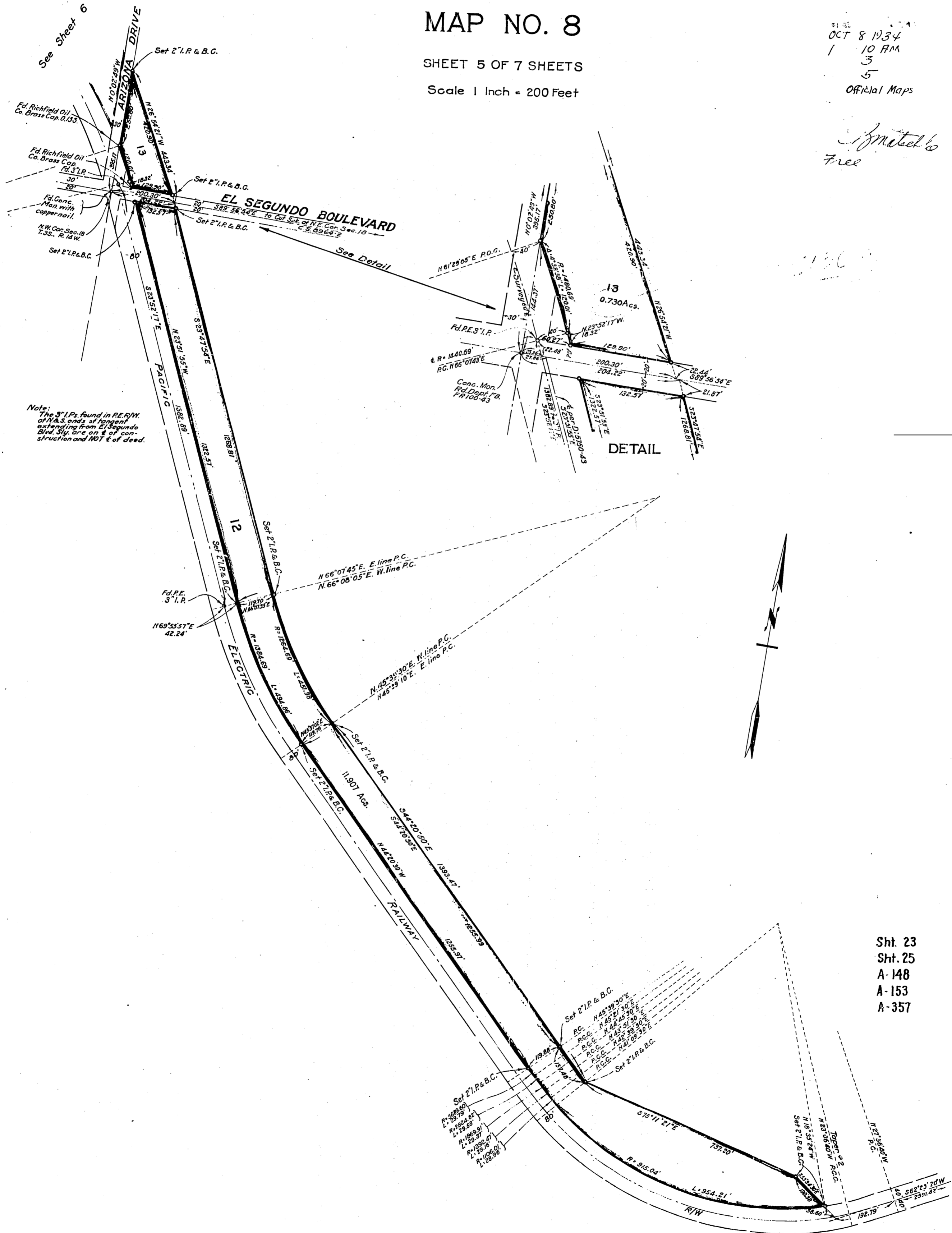
## MAP NO. 8

SHEET 5 OF 7 SHEETS

Scale 1 Inch = 200 Feet

OCT 8 1934  
1 10 AM  
3  
5  
Official Maps

*Granted to  
Free*



Note: The 3" I.P.s found in R.E.R.W. at N.S. ends of tangent extending from El Segundo Blvd. Slightly one of construction and NOT of deed.

Sht. 23  
Sht. 25  
A-148  
A-153  
A-357

Note: Set 2" I.P. & B.C. = 2" Iron Pipe and Southern California Edison Company Ltd. Brass Cap set approximately 8" to 12" below surface.

See Sheet 4

Recorded Oct. 8, 1934.

3



# PROPERTY OF SOUTHERN CALIFORNIA EDISON COMPANY LTD.

## MAP NO. 8

SHEET 6 OF 7 SHEETS

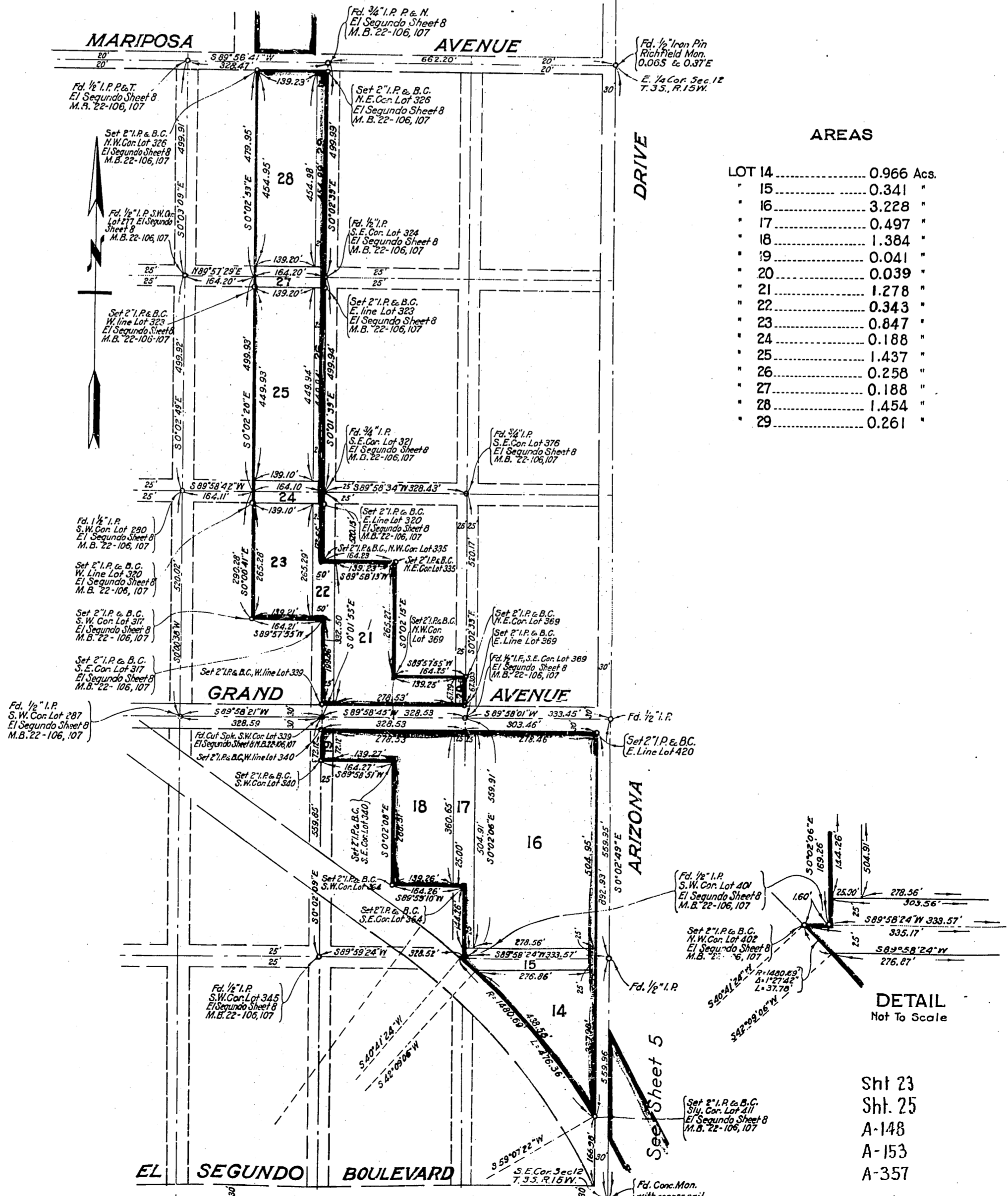
Scale 1 Inch = 200 Feet

OCT 8 1934  
1 10 A.M.  
3  
6  
Official Maps

*S. Matella*  
Free

Arizona Dr. changed to Sepulveda Blvd. - E: 46-61, Res. 558

See Sheet 7



Note: Set 2" I.P. & B.C. = 2" Iron Pipe and Southern California Edison Company Ltd. Brass Cap set approximately 8" to 12" below surface.  
Recorded Oct. 8, 1934.

COUNTY ENGINEERS COPY

# PROPERTY OF SOUTHERN CALIFORNIA EDISON COMPANY LTD.

## MAP NO. 8

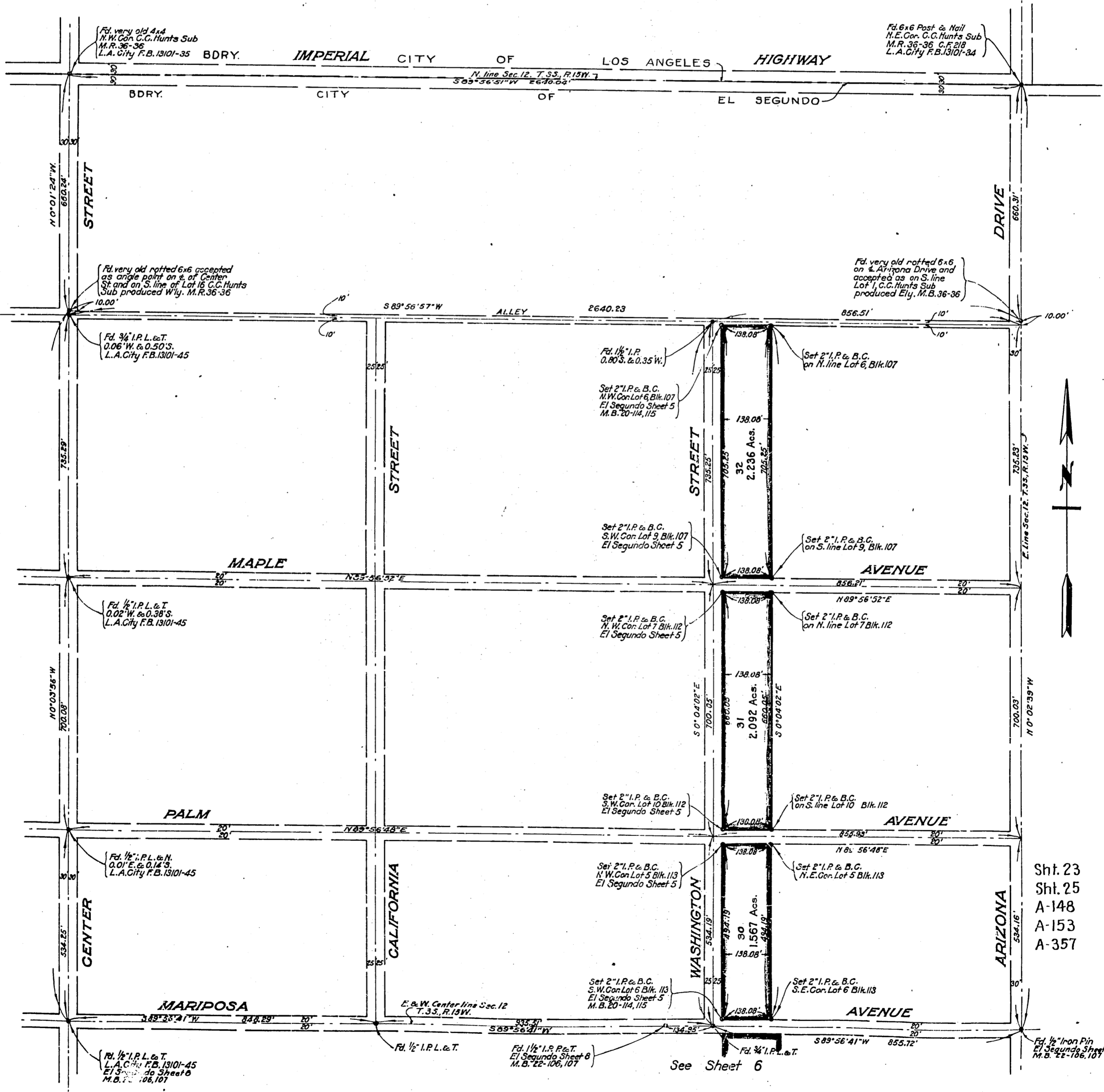
SHEET 7 OF 7 SHEETS

Scale 1 Inch = 200 Feet

OCT 8 1934  
11:10 AM  
3  
7  
Original Maps

*E. J. Mattheis*  
free

Arizona Dr. changed to Sepulveda Blvd. ~ E: 46-61, Res. 558  
Alley named Walnut Ave. ~ E: 46-67, Res. 559



Note: Set 2" I.P. & B.C. = 2" Iron Pipe and Southern California Edison Company Ltd. Brass Cap set approximately 8" to 12" below surface.  
Recorded Oct. 8, 1934.