

PROPERTY OF  
SOUTHERN CALIFORNIA EDISON COMPANY LTD.

MAP NO. 9

SHEET 1 OF 2 SHEETS

PARTLY IN THE COUNTY OF LOS ANGELES  
AND PARTLY  
IN THE CITY OF LONG BEACH

OCT 8 1934  
10 AM  
3  
8  
OFFICIAL MAPS  
S. J. Matrella  
Free

Being a subdivision of a portion of lots 1, 2, 3 and 5 of Tract No. 1400, recorded in book 18 page 96 of Maps; a portion of lots 1, 2, 3, 4 and 7 and all of lots 5 and 6 of Block A, a portion of lots 15, 16, 17, and 18 and all of lots 1 to 14 both inclusive and lots 19, 20 and 21 of Block B, a portion of lots 23 to 28 both inclusive and all of lots 1 to 22 and 29 to 39 both inclusive of Block C, a portion of lots 30 and 31 and all of lots 1 to 29 and 32 to 50 both inclusive of Block D, a portion of lots 1, 2, and 3 of Block E all in Tract No. 6823 recorded in book 74 page 61 of Maps; also a portion of Hawthorn Road, Woodland Road and Seabright Avenue as vacated by Resolution C5403 and adopted Aug. 4, 1933 by the City of Long Beach. Records of Los Angeles County.

Los Angeles California April 1933  
J. E. Rockhold County Surveyor

Scale 1 Inch = 200 Feet

The bearing between Stations 72 and 73 of the Compromise Line between Ranchos San Pedro and Los Cerritos, shown as S. 61° 19' 23" W. on Record of Surveys book 30 page 25, was used as the basis of bearings as shown upon this map.

This map was prepared from a survey made under the supervision of Geo. H. Starbuck, Licensed Surveyor and Engineer for the Southern California Edison Company Ltd., between 1927 and 1932

We hereby certify that on the 24<sup>th</sup> day of Sept 1934, the within map was approved and adopted as an official map by the Board of Supervisors of the County of Los Angeles by resolution duly adopted, as follows, to wit:

WHEREAS, The Board of Supervisors of the County of Los Angeles, State of California, pursuant to the provisions of Section 3658a of the Political Code of the State of California, did, by an order adopted on the 7<sup>th</sup> day of December 1931, direct the preparation by the County Surveyor of an Official Map of portions of the property of Southern California Edison Company Ltd.

NOW THEREFORE be it resolved that said map entitled "Property of Southern California Edison Company Ltd. Map No. 9" be and the same is hereby approved and adopted.

The foregoing resolution was, on the 24<sup>th</sup> day of Sept 1934, adopted by the Board of Supervisors of the County of Los Angeles, State of California.

ATTEST: L. E. Lampton  
County Clerk and ex-officio Clerk of  
the Board of Supervisors of the  
County of Los Angeles

by Mame B. Beatty  
Deputy

John Reduim  
Chairman of the Board of Supervisors  
Supervisor 5th. District

Mark A. [Signature]  
Supervisor 1st. District

Godolph [Signature]  
Supervisor 2nd. District

J. M. V. Raine  
Supervisor 3rd. District

Roger Jessup  
Supervisor 4th. District

L. E. Lampton  
County Clerk and ex-officio Clerk  
of the Board of Supervisors of  
the County of Los Angeles

by Mame B. Beatty  
Deputy

Sht. 30  
A-132  
A-312  
A-889-2

PROPERTY OF  
SOUTHERN CALIFORNIA EDISON COMPANY LTD.

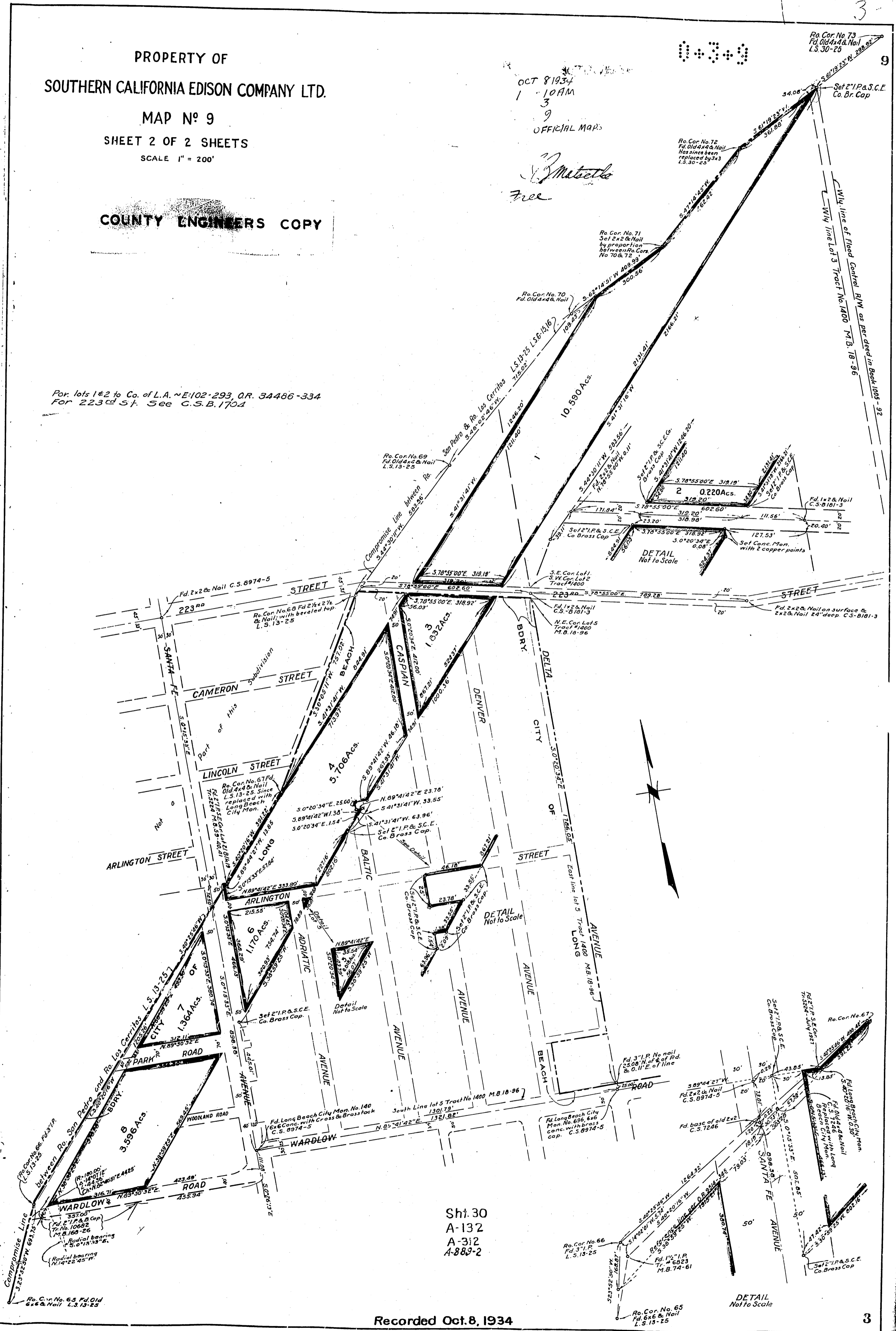
MAP No 9  
SHEET 2 OF 2 SHEETS  
SCALE 1" = 200'

COUNTY ENGINEERS COPY

OCT 8 1934  
1 10AM  
3  
9  
OFFICIAL MAPS

*M. Matello*  
Free

Por. lots 1#2 to Co. of L.A. ~E:102-293, O.R. 34486-334  
For 223rd St. See C.S.B.1704



Sh. 30  
A-132  
A-312  
A-889-2

Recorded Oct. 8, 1934

3