

OFFICIAL MAP OF THE COUNTY OF LOS ANGELES REGION II

DIVISIONS 7 & 18

IN THE COUNTY OF LOS ANGELES

BEING A PLAT OF THE SOUTH ONE-HALF OF THE SOUTHEAST QUARTER OF SECTION 1, THE NORTHEAST QUARTER OF THE NORTHEAST QUARTER OF SECTION 12, THE SOUTH ONE-HALF OF THE NORTHEAST QUARTER OF SECTION 12, THE SOUTHEAST QUARTER OF THE NORTHWEST QUARTER OF SECTION 12, THE WEST ONE-HALF OF THE EAST ONE-HALF OF THE SOUTHEAST QUARTER OF SECTION 12, THE NORTH ONE-HALF OF THE NORTHWEST QUARTER OF THE SOUTHEAST QUARTER OF SECTION 12, THE NORTH ONE-HALF OF THE NORTH EAST QUARTER OF THE SOUTHWEST QUARTER OF SECTION 12, AND THE NORTHWEST QUARTER OF THE NORTHWEST QUARTER OF THE SOUTHWEST QUARTER OF THE NORTHEAST QUARTER OF THE SOUTHWEST QUARTER OF SECTION 12, ALL BEING IN TOWNSHIP 4 NORTH RANGE 9 WEST S.B.B.&M.

Los Angeles
Alfred Jones

California

February 1935
County Surveyor

This map was prepared from a survey of Sections 1 and 12, T.4N., R.9W. S.B.B.&M as shown on County Surveyor's Map No 8735, and from recorded deeds and records of the Assessor of The County of Los Angeles.

The dimensions of parcels shown hereon are proportional parts of the surveyed dimensions of the section in accordance with the deeds noted in the parcels (O.R.—) and recorded in Official Record books on file in the office of the Recorder of the County of Los Angeles, which deeds describe the fractional parts of the sections without dimensions.

For the location of any parcel the recorded deed description shall control over such dimensions.

Bearings are based on County Surveyor's Map No 8735

We hereby certify that on the...day of...193...the within map was approved and adopted as an official map by the Board of Supervisors of the County of Los Angeles by resolution duly adopted, as follows, to-wit:

"WHEREAS, the Board of Supervisors of the County of Los Angeles, State of California, pursuant to the provisions of Section 3658a of the Political Code of the State of California, did, by an order adopted on the 12th day of March 1934, direct the preparation by the County Surveyor of an official map of portions of Sections 1 and 12, T.4N., R.9W., S.B.M.

NOW THEREFORE, be it resolved, that this map entitled 'Official Map of the County of Los Angeles, Region II, Divisions 7 and 18,' be and the same is hereby approved and adopted.

The foregoing resolution was on the...day of...193...adopted by the Board of Supervisors of the County of Los Angeles, State of California.

ATTEST: L.E. LAMPTON

County Clerk and ex-officio Clerk of the Board of Supervisors of the County of Los Angeles.

By.....
Deputy

*Chairman of the Board of Supervisors
Supervisor 1st District*

Supervisor 2nd District

Supervisor 3rd District

Supervisor 4th District

Supervisor 5th District

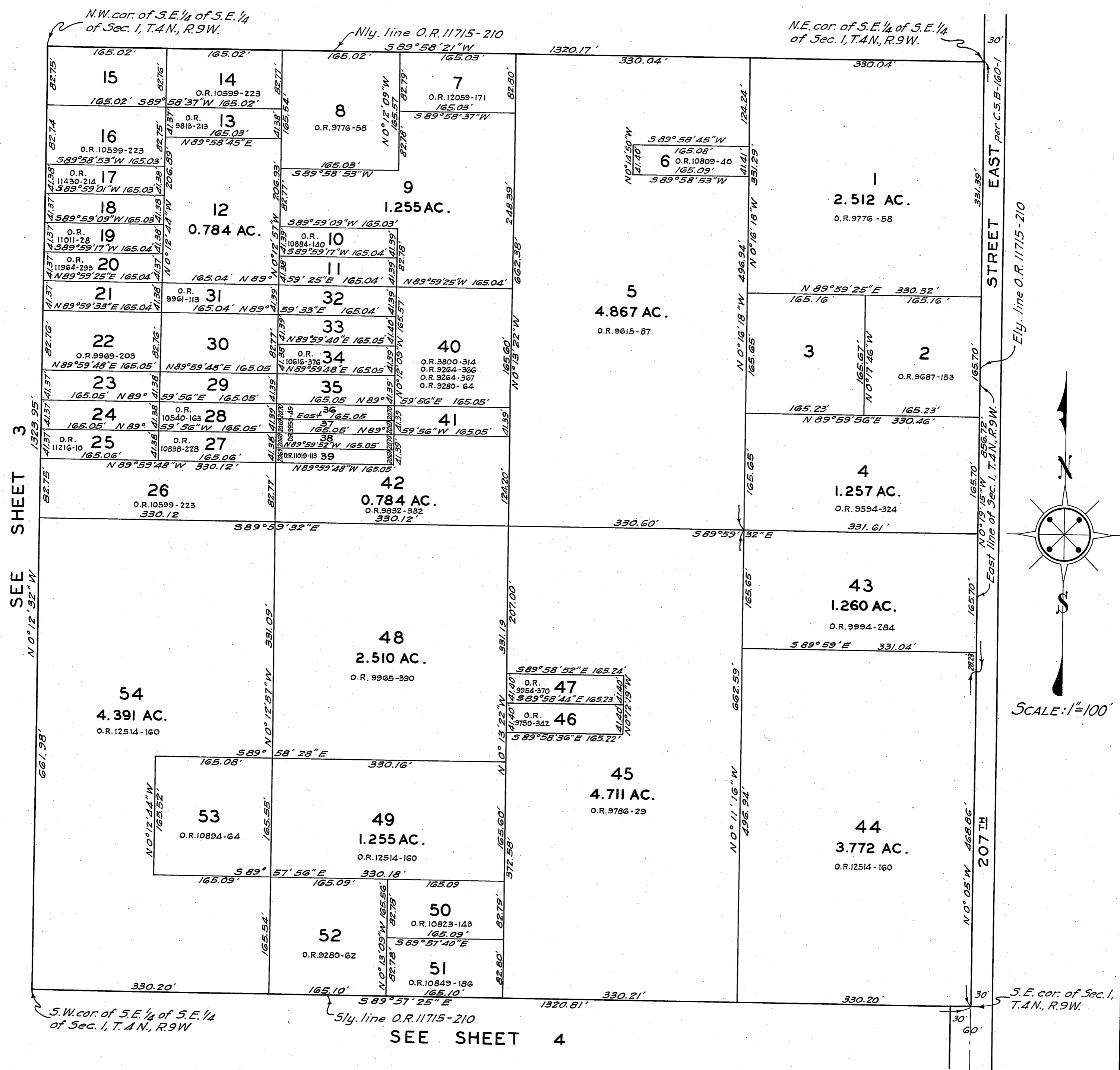
L.E. LAMPTON
County Clerk and ex-officio Clerk of the Board of Supervisors of the County of Los Angeles.

By.....
Deputy

OFFICIAL MAP OF THE COUNTY OF LOS ANGELES

REGION II

DIVISION 7



OFFICIAL MAP OF THE COUNTY OF LOS ANGELES

REGION II

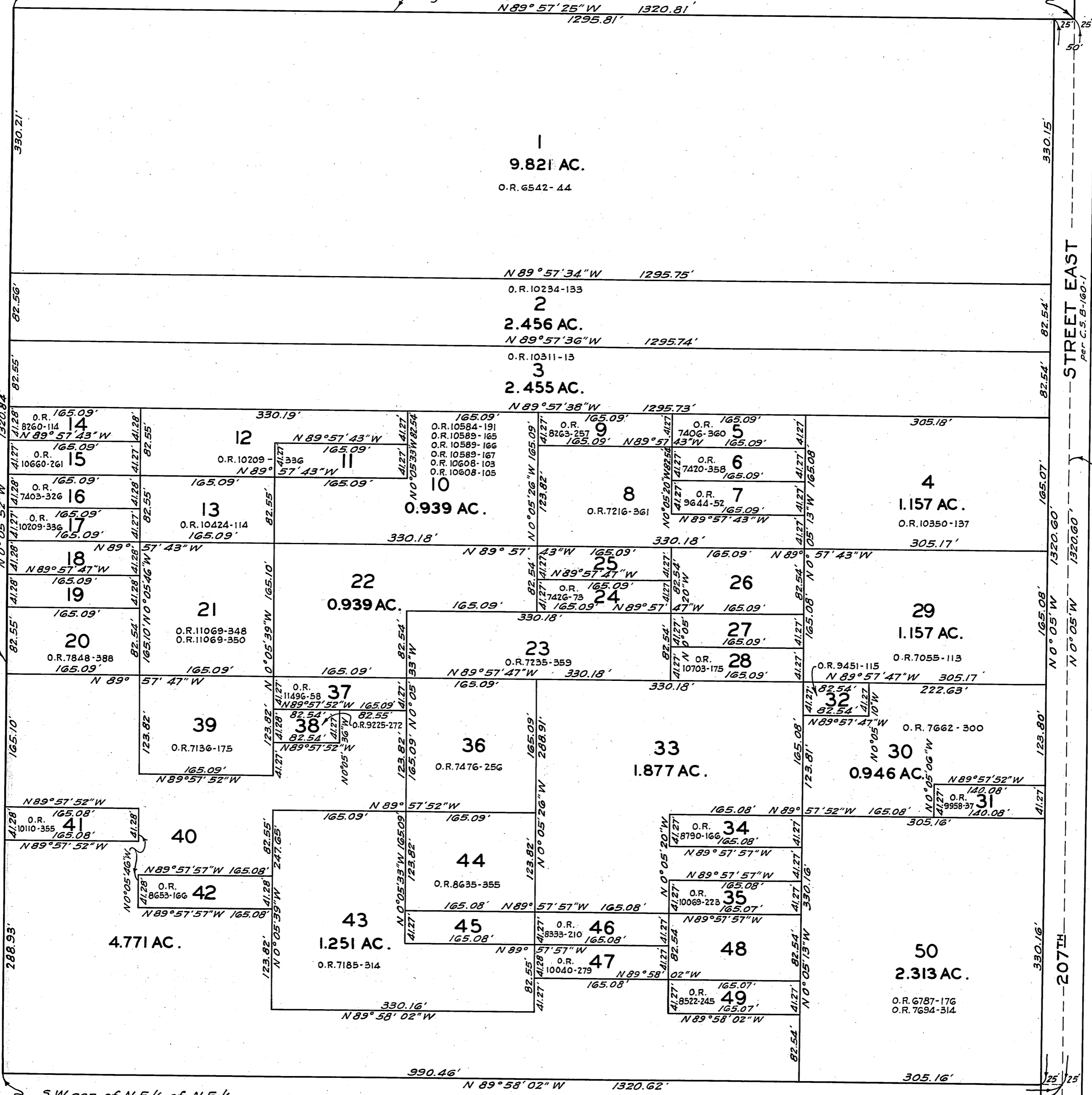
DIVISION 18

SEE SHEET 2

N.E. cor. of Sec. 12,
T.4N., R.9W.

N.W. cor. of N.E. 1/4 of N.E. 1/4
of Sec. 12, T.4N., R.9W.

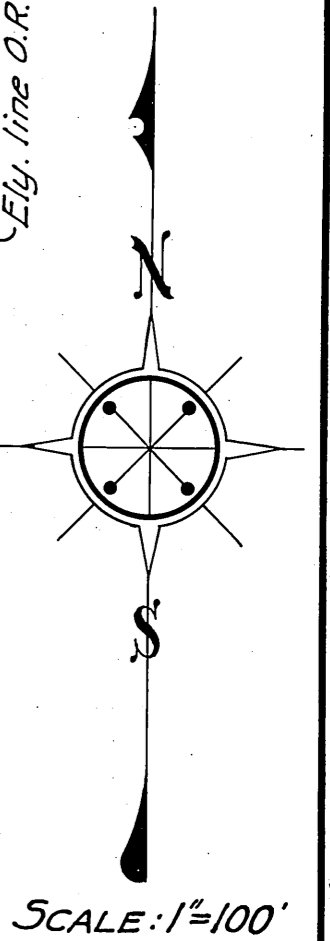
Nly. line O.R. 6093-283
N 89° 57' 25" W 1320.81'
1295.81'



SEE SHEET 5

S.E. cor. of N.E. 1/4 of N.E. 1/4
of Sec. 12, T.4N., R.9W.

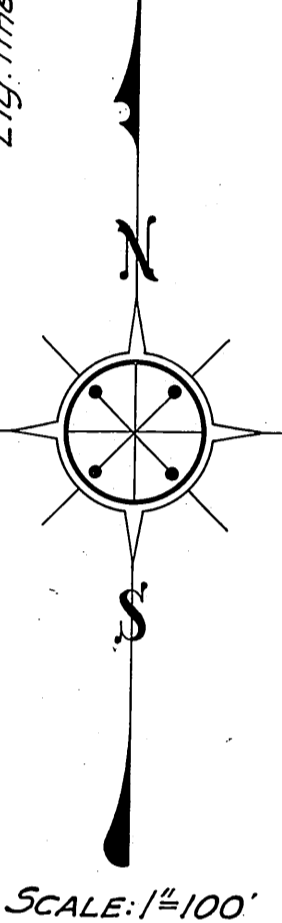
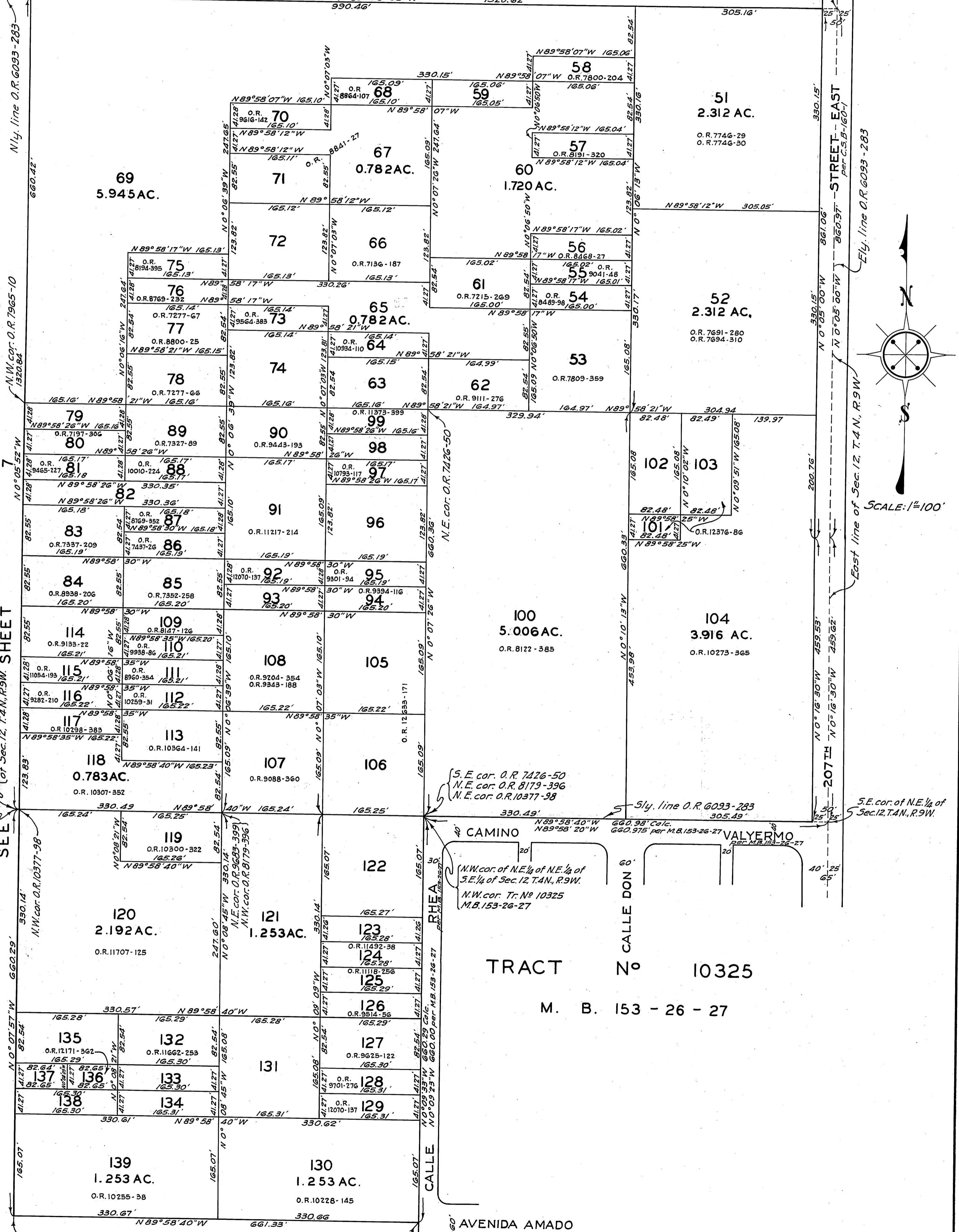
S.W. cor. of N.E. 1/4 of N.E. 1/4
of Sec. 12, T.4N., R.9W.



OFFICIAL MAP OF THE COUNTY OF LOS ANGELES REGION II

DIVISION 18

SEE SHEET 4



SEE SHEET 6

SEE SHEET 4

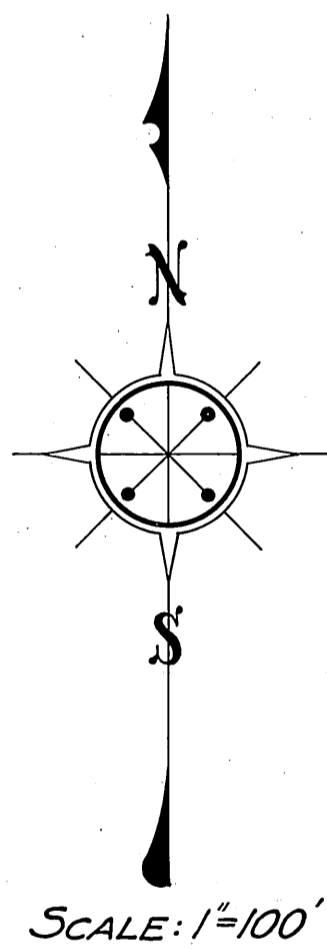
OFFICIAL MAP OF THE COUNTY OF LOS ANGELES

REGION II

DIVISION 18

SEE SHEET 5

N89°58'40"W 661.33'

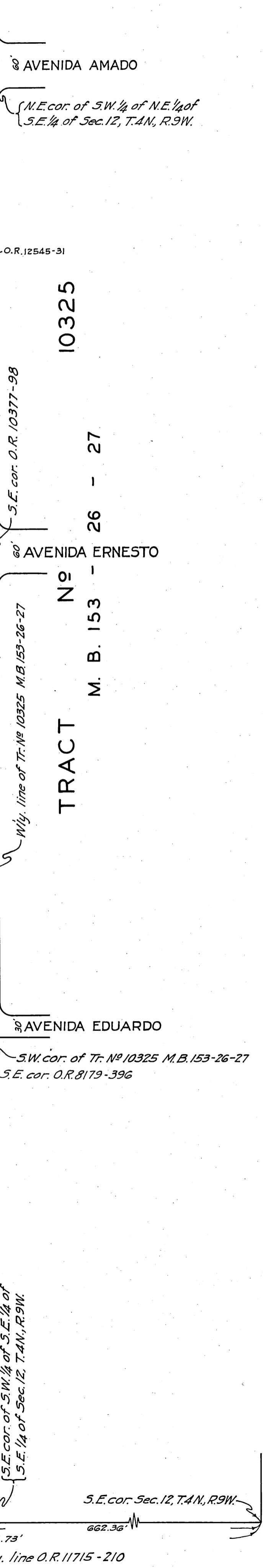
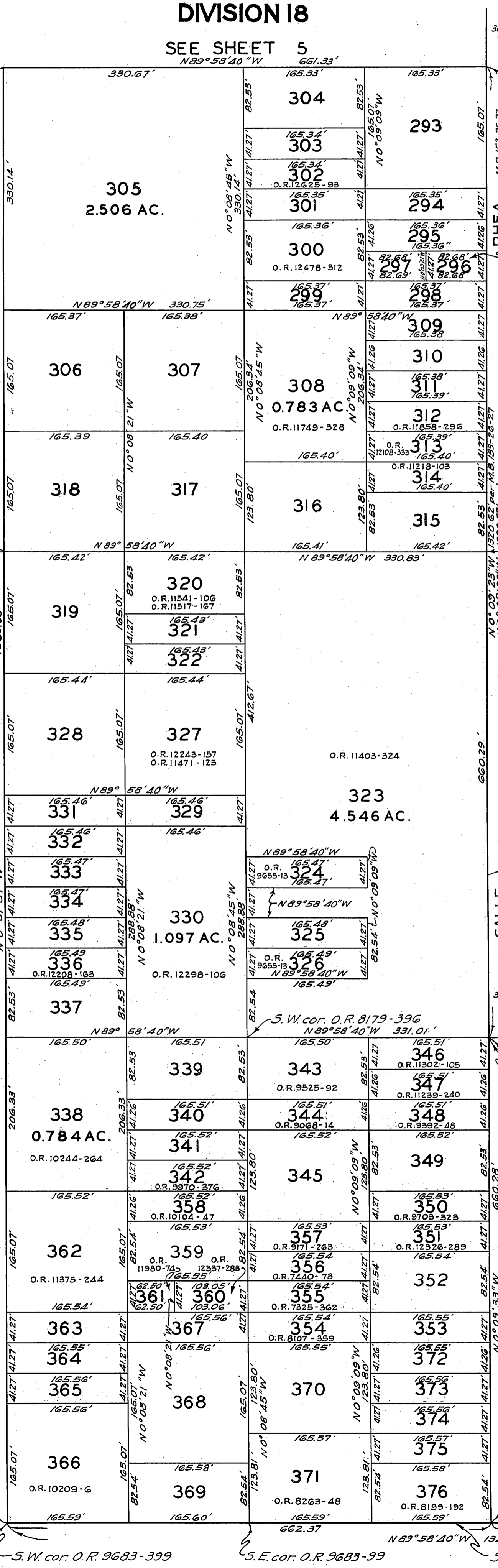


SCALE: 1"=100'

N.W. cor. of S.W. 1/4 of N.E. 1/4 of Sec. 12, T.4N., R.9W.
S.E. 1/4 of Sec. 12, T.4N., R.9W.
S.W. cor. O.R. 10377-98

N.W. cor. of N.W. 1/4 of S.E. 1/4 of Sec. 12, T.4N., R.9W.
S.W. cor. O.R. 10377-98

S.W. cor. of S.W. 1/4 of S.E. 1/4 of Sec. 12, T.4N., R.9W.



TRACT N^o 10325 M. B. 153 - 27

26 - 27

S.E. cor. Sec. 12, T.4N., R.9W.

S.W. cor. O.R. 9683-399

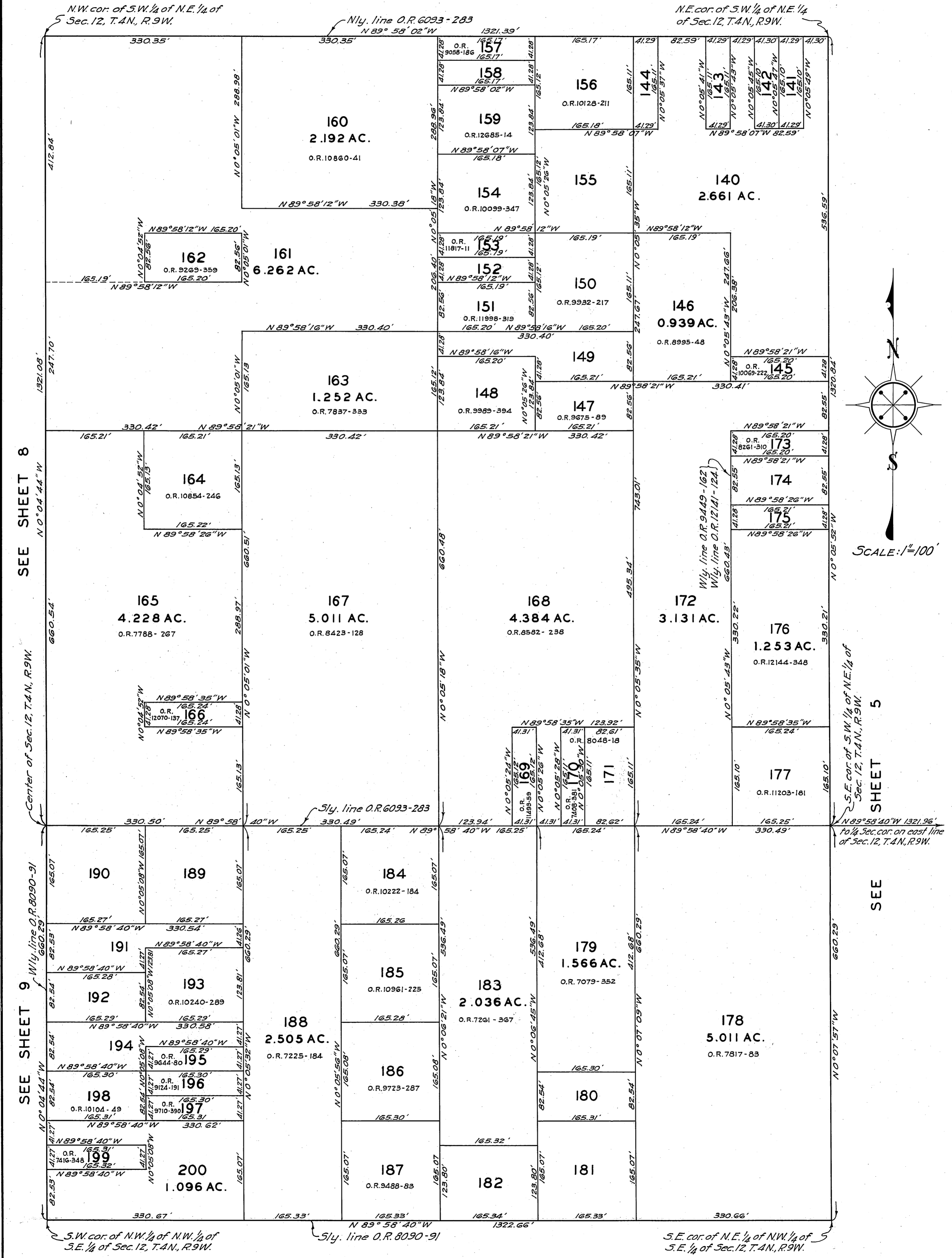
S.E. cor. O.R. 9683-99

Sly. line O.R. 11715-210

OFFICIAL MAP OF THE COUNTY OF LOS ANGELES

REGION II

DIVISION 18



SEE SHEET 8

Center of Sec. 12, T.4N., R.9W.

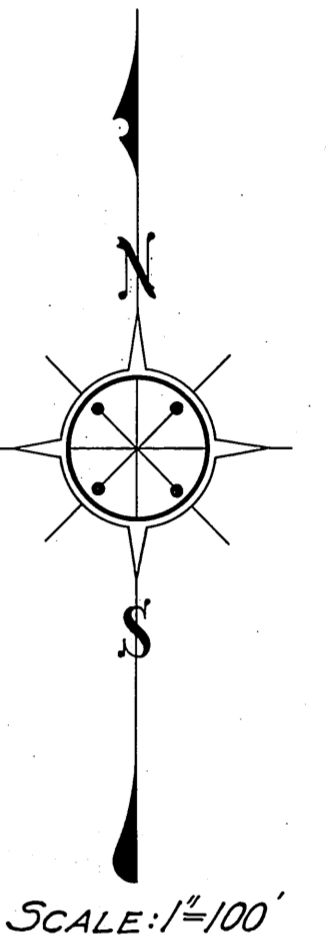
SEE SHEET 9

Wily. line O.R. 8090-91

SHEET 5

SEE

S.E. cor. of S.W. 1/4 of N.E. 1/4 of Sec. 12, T.4N., R.9W.



N.W. cor. of S.W. 1/4 of N.E. 1/4 of Sec. 12, T.4N., R.9W.

Nly. line O.R. 6093-283

N.E. cor. of S.W. 1/4 of N.E. 1/4 of Sec. 12, T.4N., R.9W.

N 0° 04' 44" W

Center of Sec. 12, T.4N., R.9W.

N 0° 04' 44" W

N 89° 58' 40" W

N 89° 58' 40" W

S.W. cor. of N.W. 1/4 of N.W. 1/4 of S.E. 1/4 of Sec. 12, T.4N., R.9W.

Sly. line O.R. 8090-91

S.E. cor. of N.E. 1/4 of N.W. 1/4 of S.E. 1/4 of Sec. 12, T.4N., R.9W.

SHEET 5

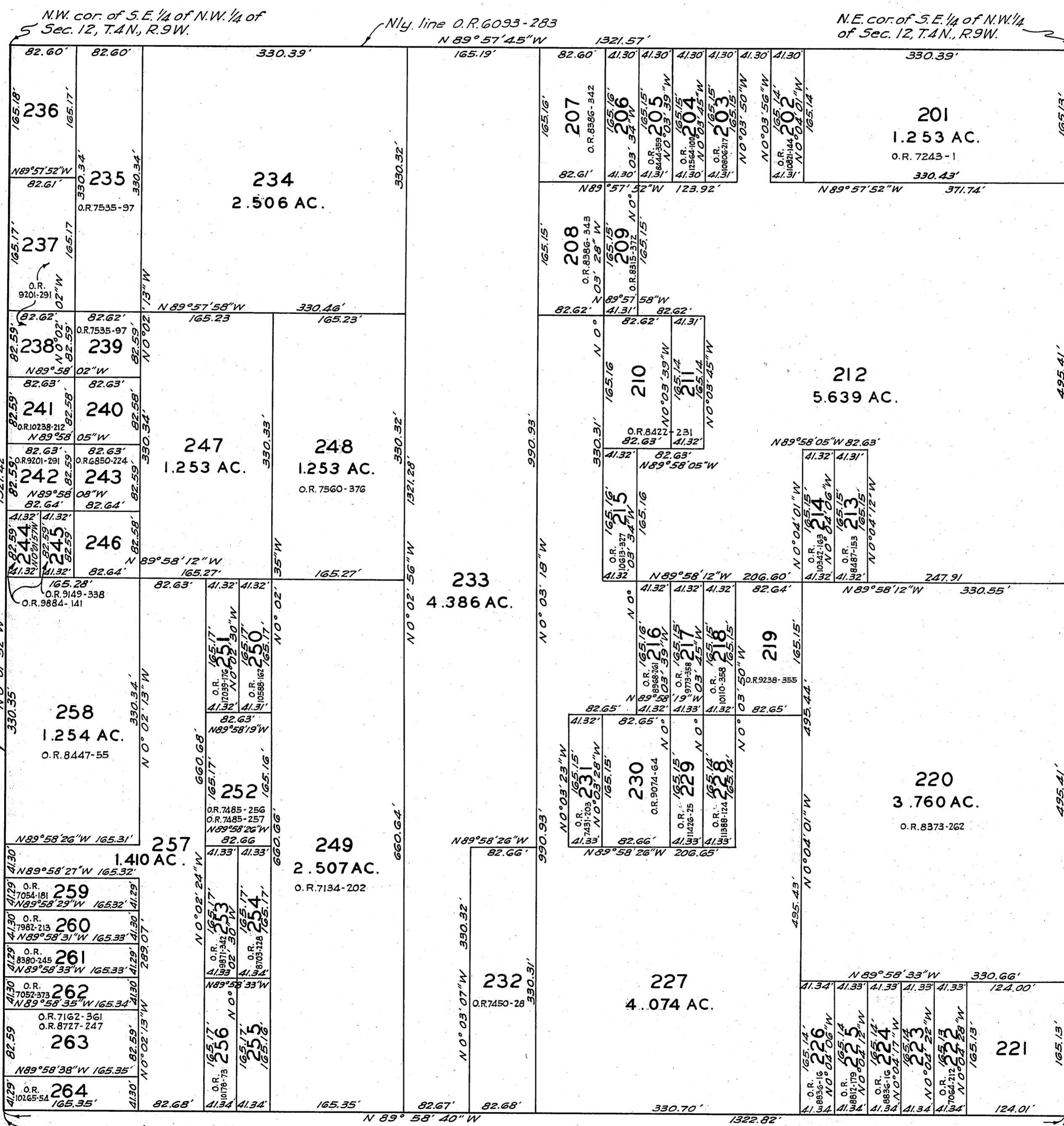
SEE

S.E. cor. of S.W. 1/4 of N.E. 1/4 of Sec. 12, T.4N., R.9W.

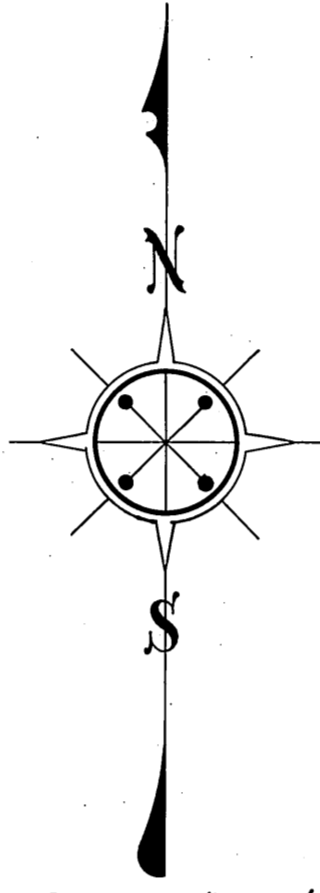
OFFICIAL MAP OF THE COUNTY OF LOS ANGELES

REGION II

DIVISION 18

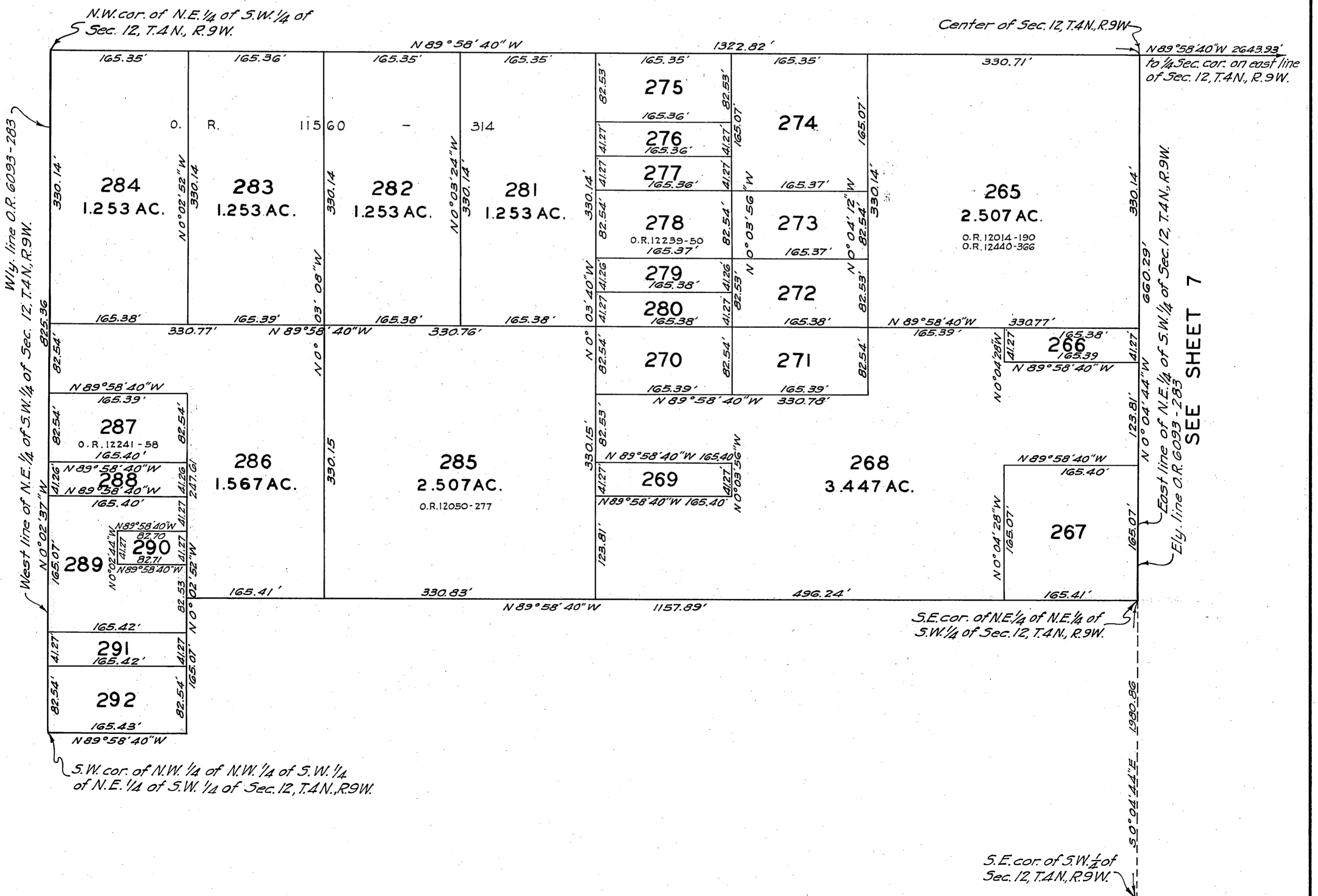


OFFICIAL MAP OF THE COUNTY OF LOS ANGELES REGION II DIVISION 18



SCALE: 1"=100'

SEE SHEET 8



SEE SHEET 7