

# OFFICIAL MAP OF THE COUNTY OF LOS ANGELES REGION 48

DIVISIONS 103,  
104 & 105

PARTLY IN THE CITY OF VERNON  
AND PARTLY IN THE COUNTY OF LOS ANGELES

BEING A PLAT OF LOTS 81, 82, AND 83; PORTIONS OF LOTS 75 TO 80 INCL., PORTION OF LOT 81 1/2, PORTIONS OF LOTS 84 TO 92 INCL., AND PORTIONS OF LOTS 110 TO 114 INCL., OF TRACT NO. 1 OF RANCHO LAGUNA, AS SHOWN ON MAP FILED AS "EXHIBIT A" IN CASE NO. B-25296 OF THE SUPERIOR COURT OF THE STATE OF CALIFORNIA, IN AND FOR THE COUNTY OF LOS ANGELES; A PORTION OF THE ATCHISON TOPEKA AND SANTA FE RAILWAY COMPANY'S RIGHT OF WAY, 100 FEET WIDE, AS SHOWN ON SAID MAP; A PORTION OF SAN ANTONIO RANCHO, AS SHOWN ON MAP RECORDED IN BOOK 1, PAGE 389 OF PATENTS, RECORDS OF SAID COUNTY; PORTIONS OF PASADENA AVENUE VACATED BY ORDER OF THE BOARD OF SUPERVISORS OF THE COUNTY OF LOS ANGELES, AS NOTED IN ROAD BOOK NO. 18, PAGE 303, ROAD BOOK NO. 22, PAGE 381, ROAD BOOK NO. 23, PAGE 336, ROAD BOOK NO. 25, PAGE 204, AND IN MINUTE BOOK NO. 126, PAGE 150, ON FILE IN THE OFFICE OF SAID BOARD; AND A PORTION OF INDIANA STREET VACATED BY ORDER OF THE BOARD OF TRUSTEES OF THE CITY OF VERNON DECEMBER 6, 1926 BY ORDINANCE NO. 391 OF SAID CITY OF VERNON.

Los Angeles  
Alfred Jones  
California  
February 1935  
County Surveyor

This map was prepared from recorded deeds and from the Los Angeles County Assessors' records.

Lots shown hereon containing references to Official Records (O.R.—) are the Parcels described in the corresponding Official Record Books on file in the office of the Recorder of the County of Los Angeles.

The C.F. 880 referred to herein is a copy of the map of Rancho Laguna filed as Exhibit A in Case No. B-25296 of the Superior Court of the State of California in and for the County of Los Angeles.

The bearings shown on this map are based on the bearings shown on the abovementioned map of Rancho Laguna.

We hereby certify that on the \_\_\_\_\_ day of \_\_\_\_\_ 1935, the within map was approved and adopted as an official map by the Board of Supervisors of the County of Los Angeles by resolution duly adopted as follows, to wit:

"WHEREAS, the Board of Supervisors of the County of Los Angeles, State of California, pursuant to the provisions of Section 3658 a of the Political Code of the State of California, did, by an order adopted on the 26<sup>th</sup> day of March, 1934, direct the preparation, by the County Surveyor, of an official map of the industrial area in the vicinity of Vernon.

NOW THEREFORE, be it resolved, that this map entitled 'Official Map of the County of Los Angeles, Region 48, Divisions 103, 104, and 105,' be and the same is hereby approved and adopted.

The foregoing resolution was on the \_\_\_\_\_ day of \_\_\_\_\_ 1935, adopted by the Board of Supervisors of the County of Los Angeles, State of California.

ATTEST: L.E. LAMPTON  
County Clerk and ex-officio Clerk  
of the Board of Supervisors of  
the County of Los Angeles.

By \_\_\_\_\_  
Deputy

\_\_\_\_\_  
Chairman of the Board of Supervisors  
Supervisor 1<sup>st</sup> District

\_\_\_\_\_  
Supervisor 2<sup>nd</sup> District

\_\_\_\_\_  
Supervisor 3<sup>rd</sup> District

\_\_\_\_\_  
Supervisor 4<sup>th</sup> District

\_\_\_\_\_  
Supervisor 5<sup>th</sup> District

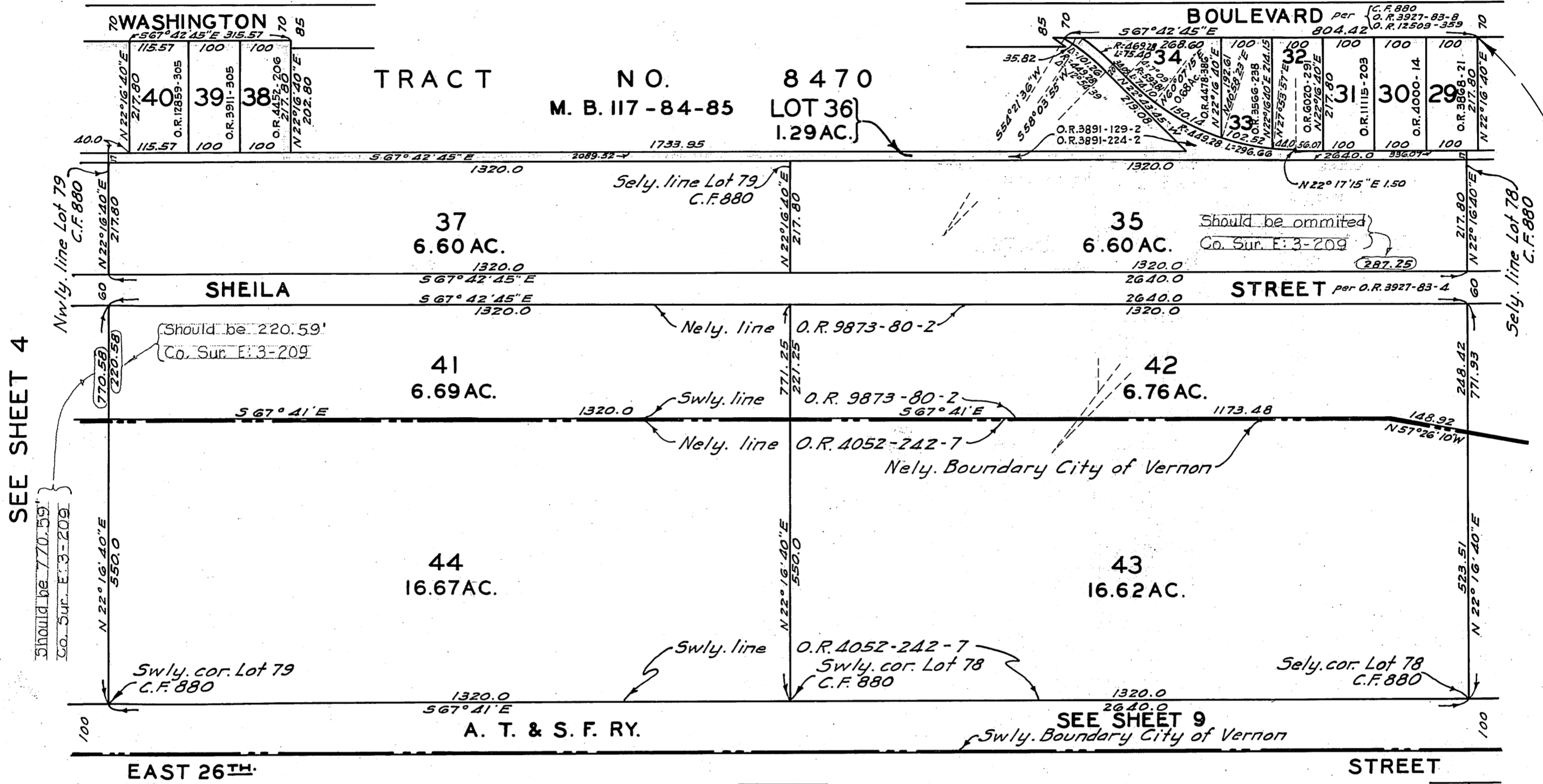
L.E. LAMPTON  
County Clerk and ex-officio Clerk  
of the Board of Supervisors of  
the County of Los Angeles.

By \_\_\_\_\_  
Deputy



# OFFICIAL MAP OF THE COUNTY OF LOS ANGELES REGION 48

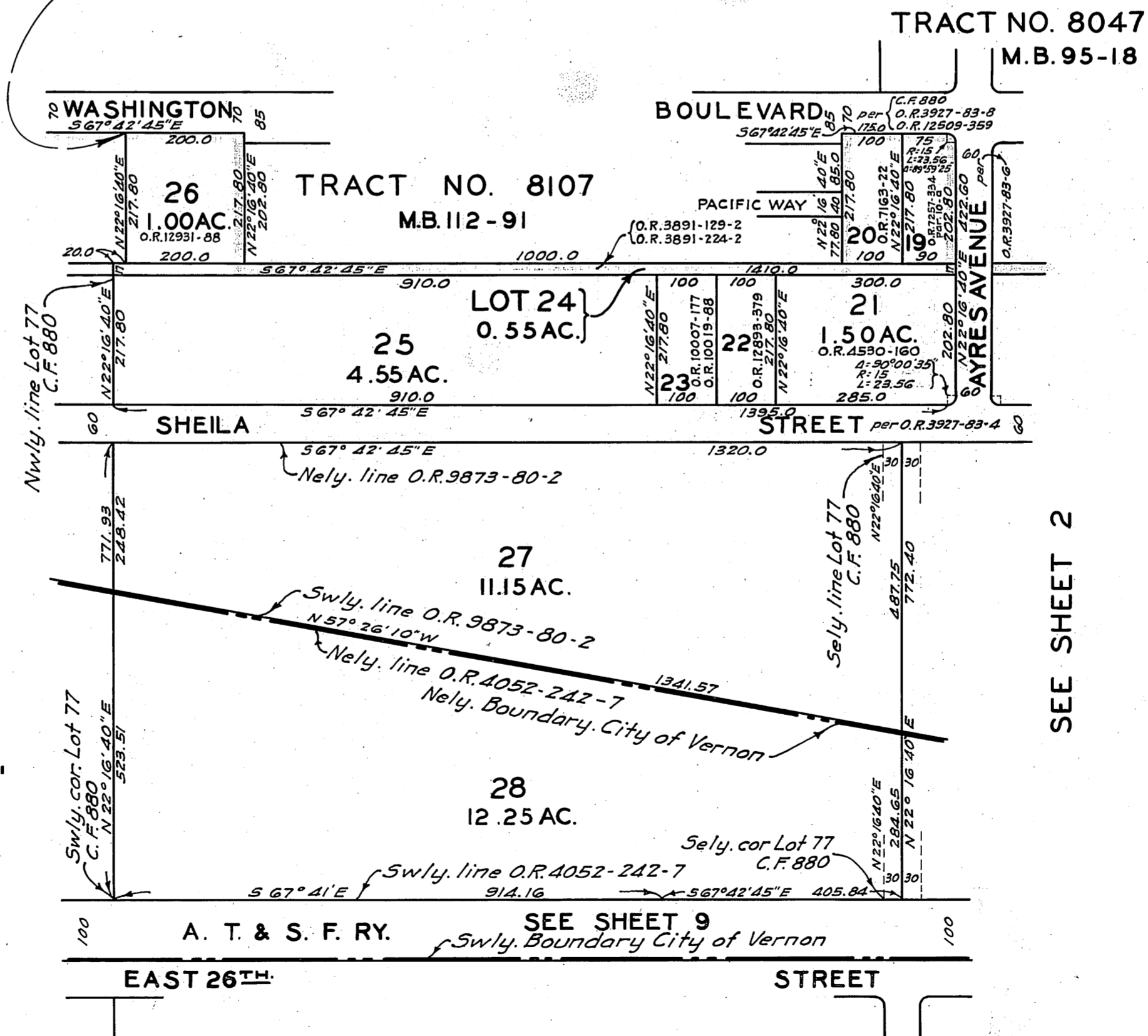
DIVISION 103



SEE SHEET 4

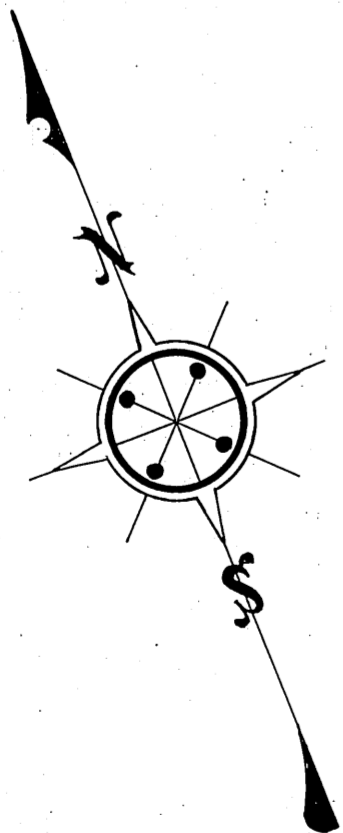
SEE SHEET 9

SEE SHEET 6  
IDENTICAL



SEE SHEET 2

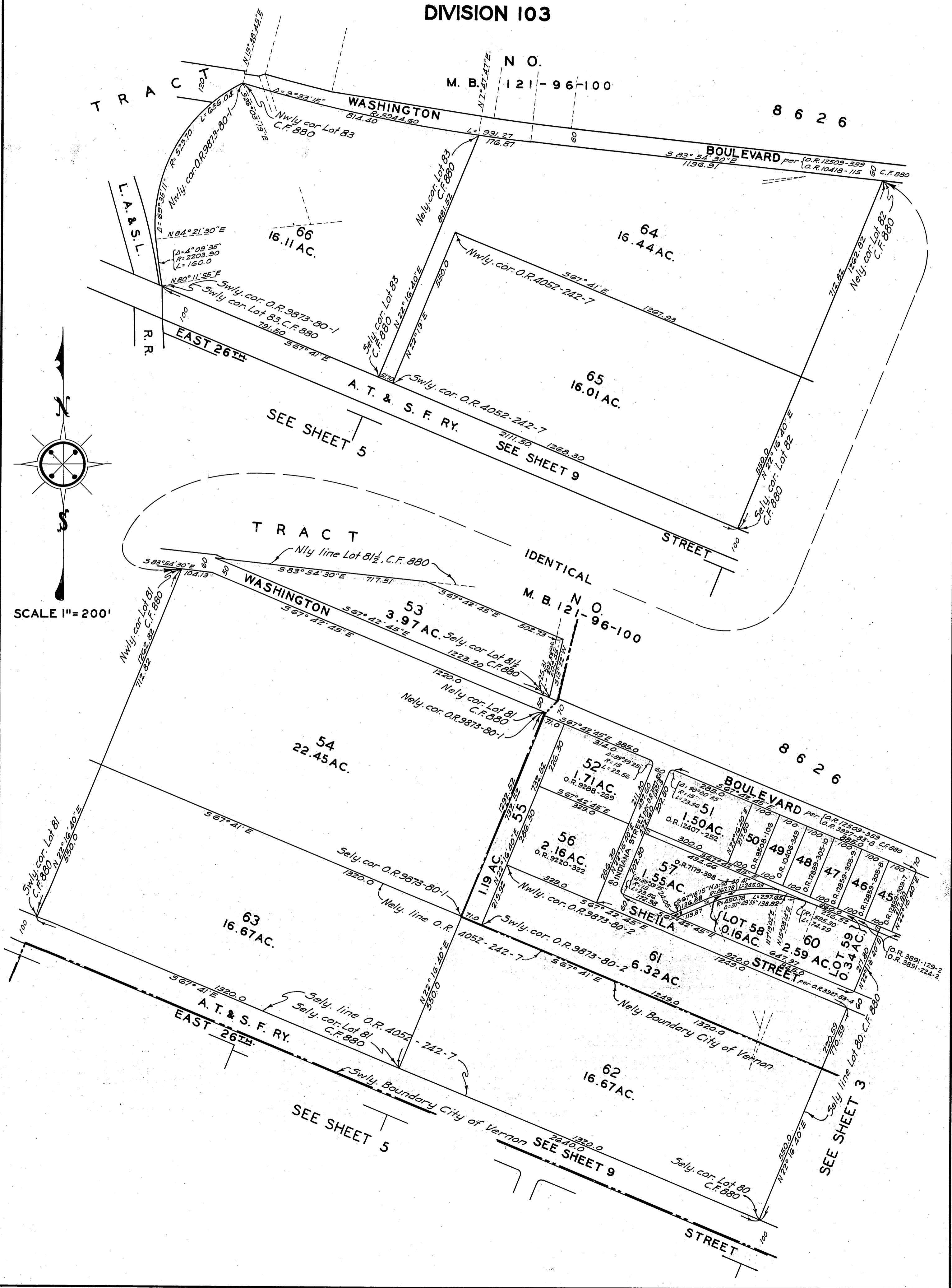
SEE SHEET 7



SCALE 1" = 200'

# OFFICIAL MAP OF THE COUNTY OF LOS ANGELES REGION 48

DIVISION 103

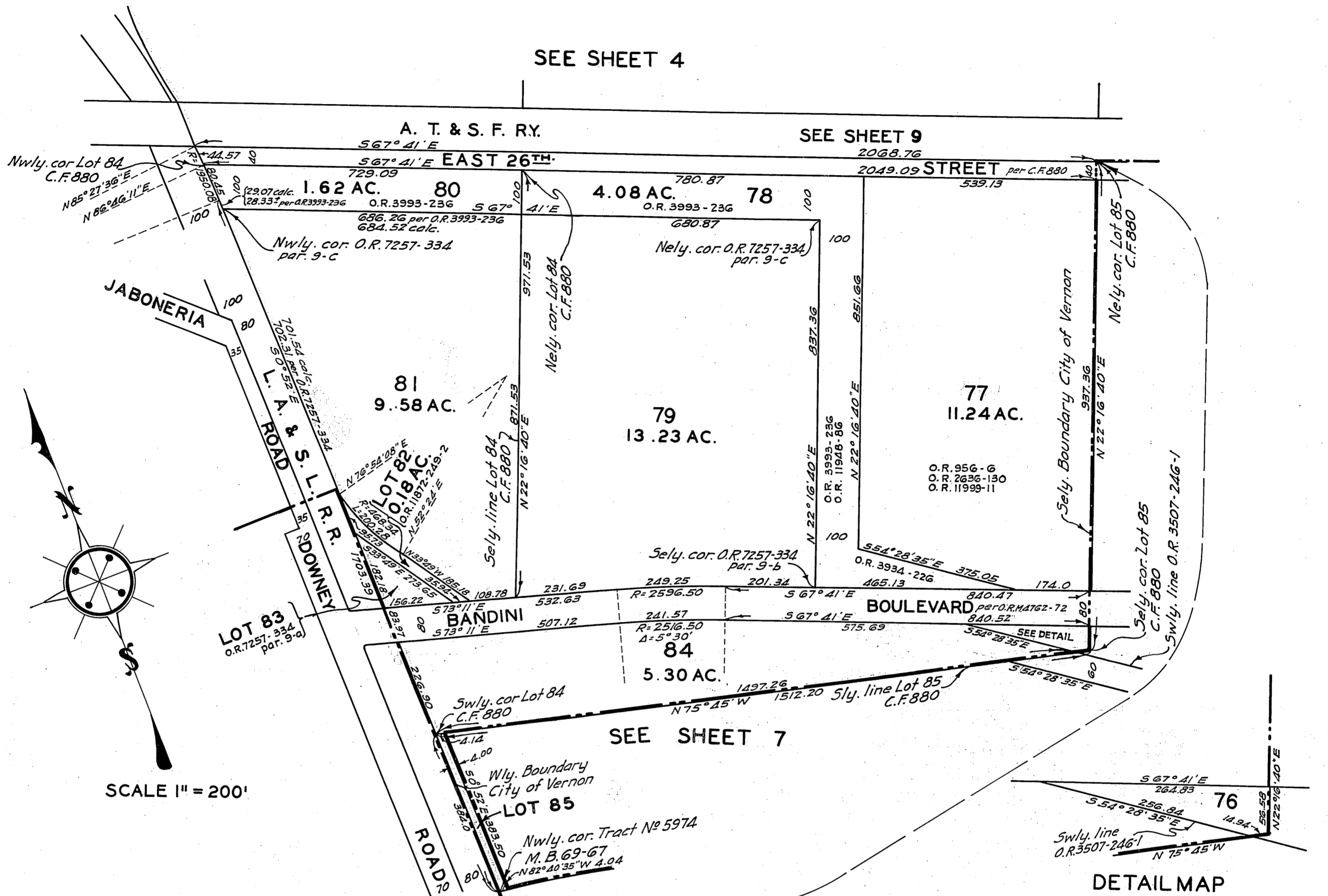




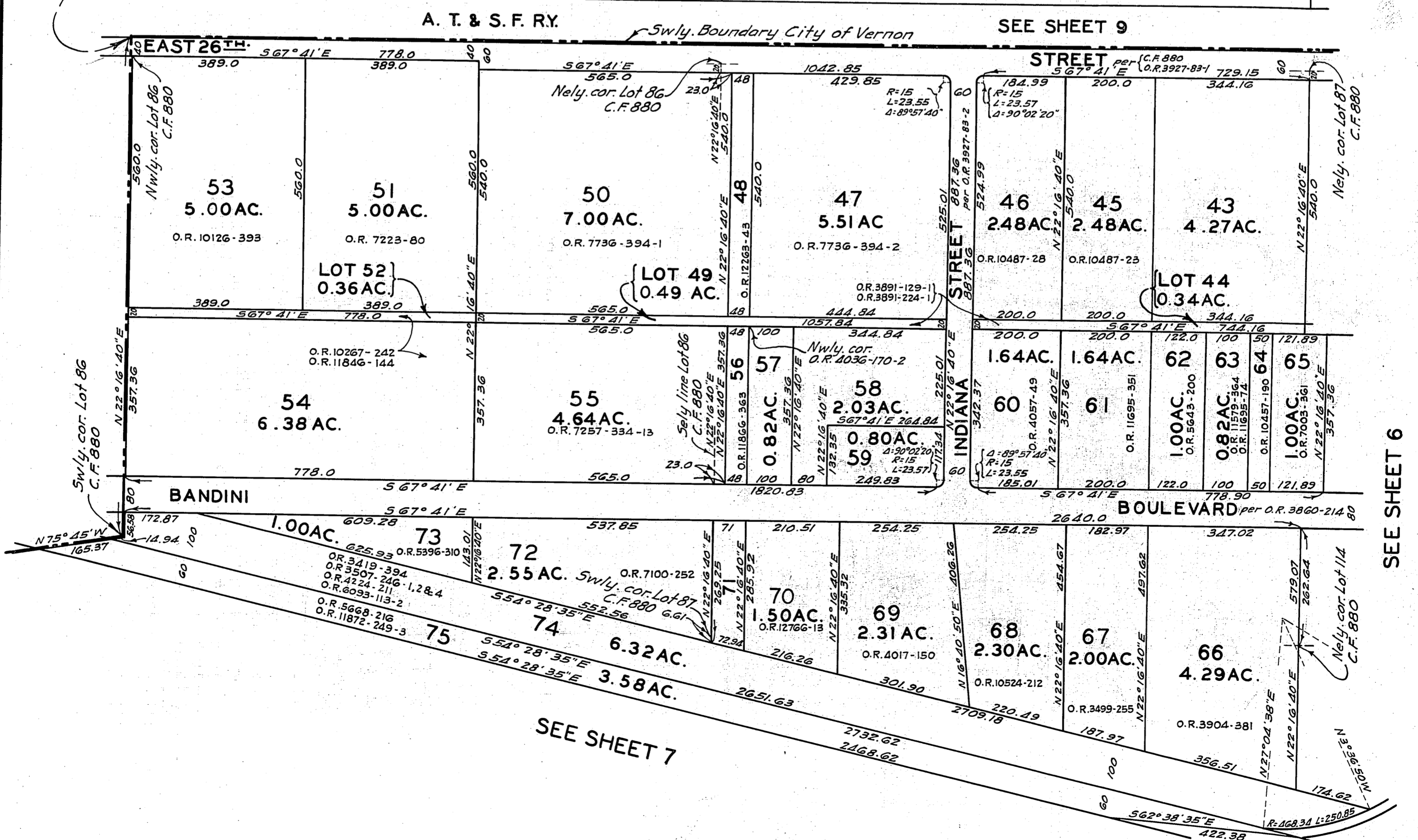
# OFFICIAL MAP OF THE COUNTY OF LOS ANGELES REGION 48

DIVISION 105

SEE SHEET 4



IDENTICAL  
SEE SHEET 4



SEE SHEET 6

SEE SHEET 7

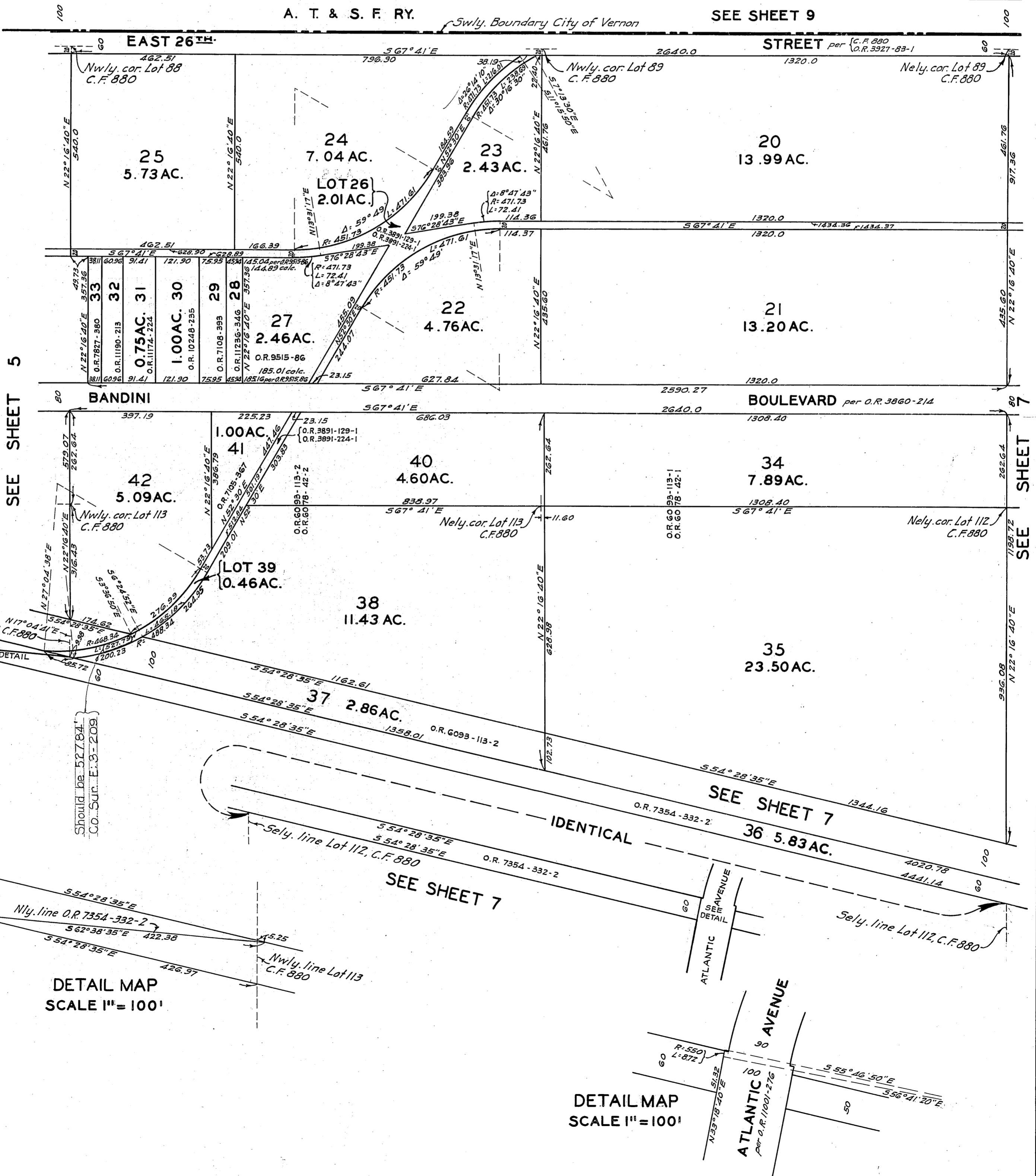
# OFFICIAL MAP OF THE COUNTY OF LOS ANGELES REGION 48

DIVISION 105



SCALE 1" = 200'

SEE SHEET 3



DETAIL MAP  
SCALE 1" = 100'

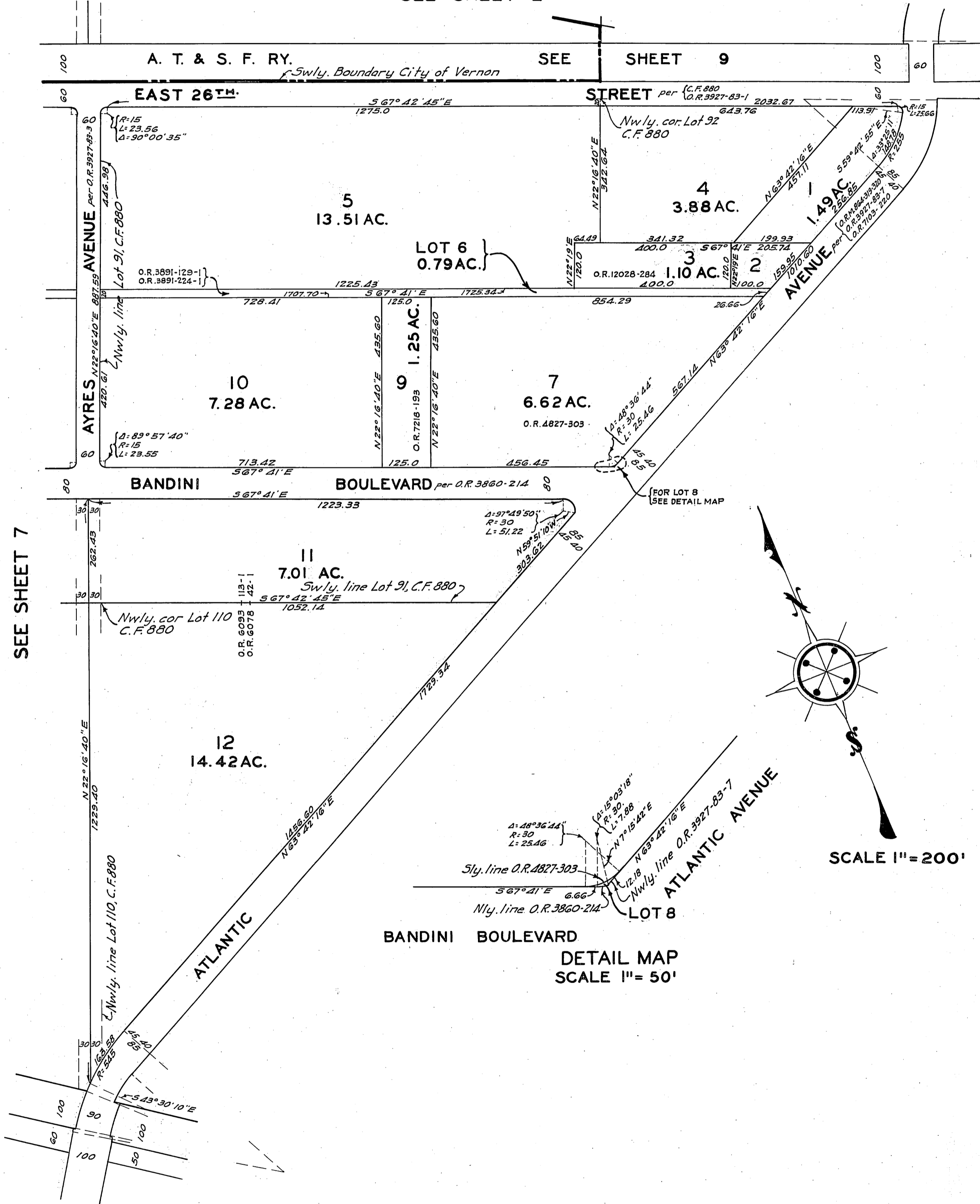
DETAIL MAP  
SCALE 1" = 100'



# OFFICIAL MAP OF THE COUNTY OF LOS ANGELES REGION 48

DIVISION 105

SEE SHEET 2



SEE SHEET 7

SEE SHEET 9

SCALE 1" = 200'

LOT 8  
BANDINI BOULEVARD  
DETAIL MAP  
SCALE 1" = 50'



