

OFFICIAL MAP OF THE COUNTY OF LOS ANGELES REGION 48

DIVISION 106

IN THE CITY OF VERNON

BEING A PLAT OF A PORTION OF LOT 1, AND ALL OF LOTS 2 AND 3 OF TRACT NO. 5974 AS SHOWN ON MAP RECORDED IN BOOK 69, PAGE 67, OF MAPS, RECORDS OF THE COUNTY OF LOS ANGELES.

Los Angeles
Alfred Jones

California

December 1934
County Surveyor

This map was prepared from information furnished by The Central Manufacturing District Incorporated, and from recorded deeds of The County of Los Angeles.

NOTE: Lots shown hereon containing references to Official Records (O.R.—) are the parcels described in the corresponding Official Record Books on file in the office of the Recorder of the County of Los Angeles.

The bearings on this map are based on the bearings shown on map of Tract No 5974 recorded in book 69 page 67, of maps.

We hereby certify that on the ____ day of _____ 193__ the within map was approved and adopted as an official map by the Board of Supervisors of the County of Los Angeles by resolution duly adopted, as follows, to wit:

"WHEREAS, the Board of Supervisors of the County of Los Angeles, State of California, pursuant to the provisions of Section 3658a of the Political Code of the State of California, did, by an order adopted on the 26th day of March, 1934, direct the preparation, by the County Surveyor, of an official map of the industrial area in the vicinity of Vernon.

NOW THEREFORE, be it resolved, that this map entitled 'Official Map of the County of Los Angeles, Region 48, Division 106,' be, and the same is hereby approved and adopted.

The foregoing resolution was on the ____ day of _____ 193__, adopted by the Board of Supervisors of the County of Los Angeles, State of California.

ATTEST: L. E. LAMPTON
County Clerk and ex-officio Clerk
of the Board of Supervisors of
the County of Los Angeles.

By _____
Deputy

Chairman of the Board of Supervisors
Supervisor 1st District

Supervisor 2nd District

Supervisor 3rd District

Supervisor 4th District

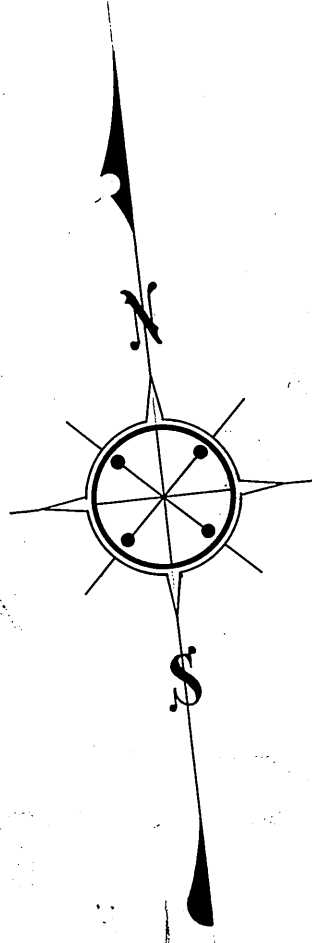
Supervisor 5th District

L. E. LAMPTON
County Clerk and ex-officio Clerk
of the Board of Supervisors of
the County of Los Angeles.

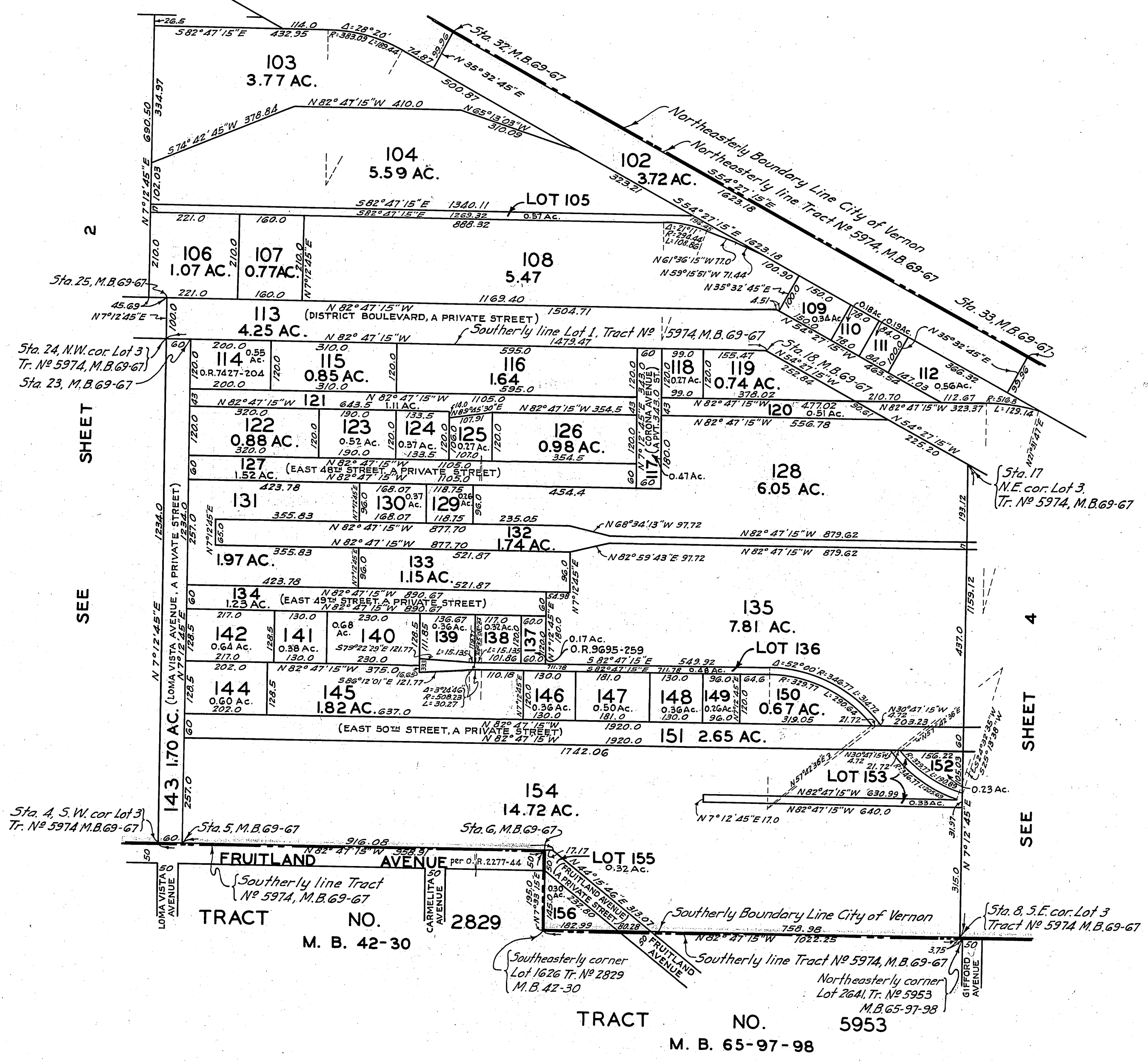
By _____
Deputy

OFFICIAL MAP OF THE COUNTY OF LOS ANGELES REGION 48

DIVISION 106



SCALE: 1"=200'



SEE SHEET 2

SEE SHEET 4

Sta. 4, S.W. cor. Lot 3 Tr. No. 5974, M.B. 69-67

Sta. 5, M.B. 69-67

Sta. 6, M.B. 69-67

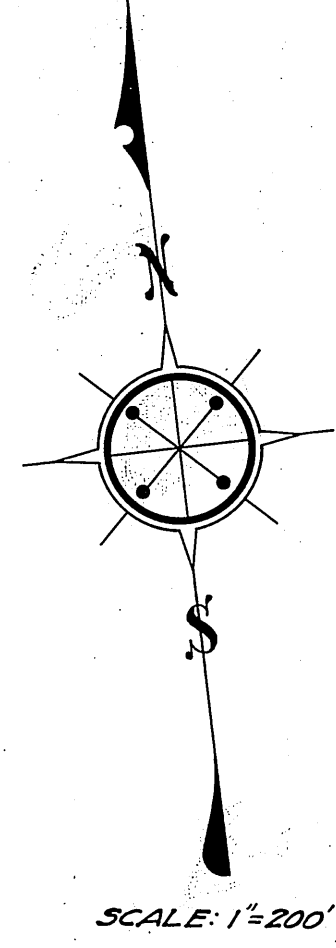
Sta. 17 N.E. cor. Lot 3 Tr. No. 5974, M.B. 69-67

Sta. 8, S.E. cor. Lot 3 Tract No. 5974, M.B. 69-67

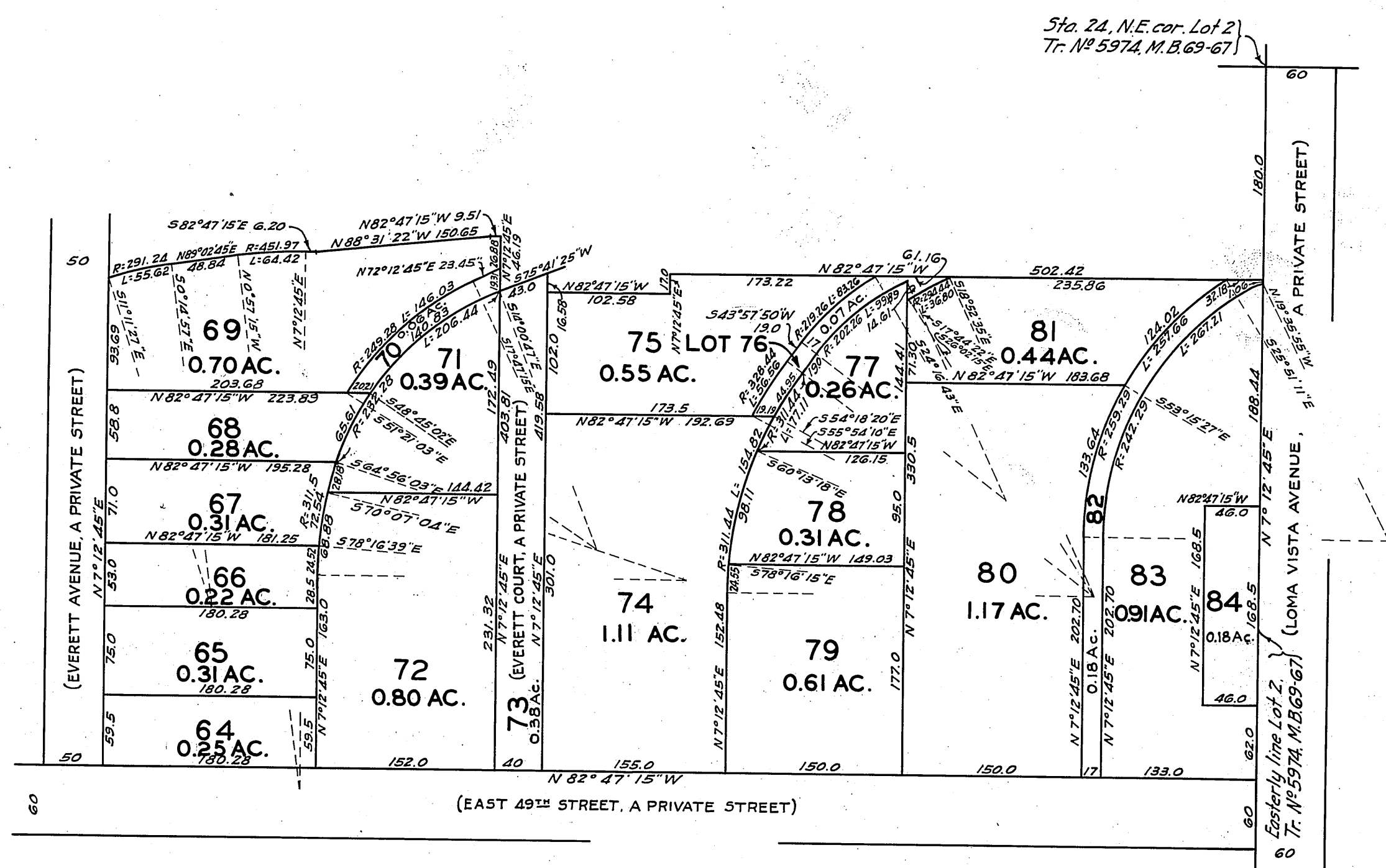
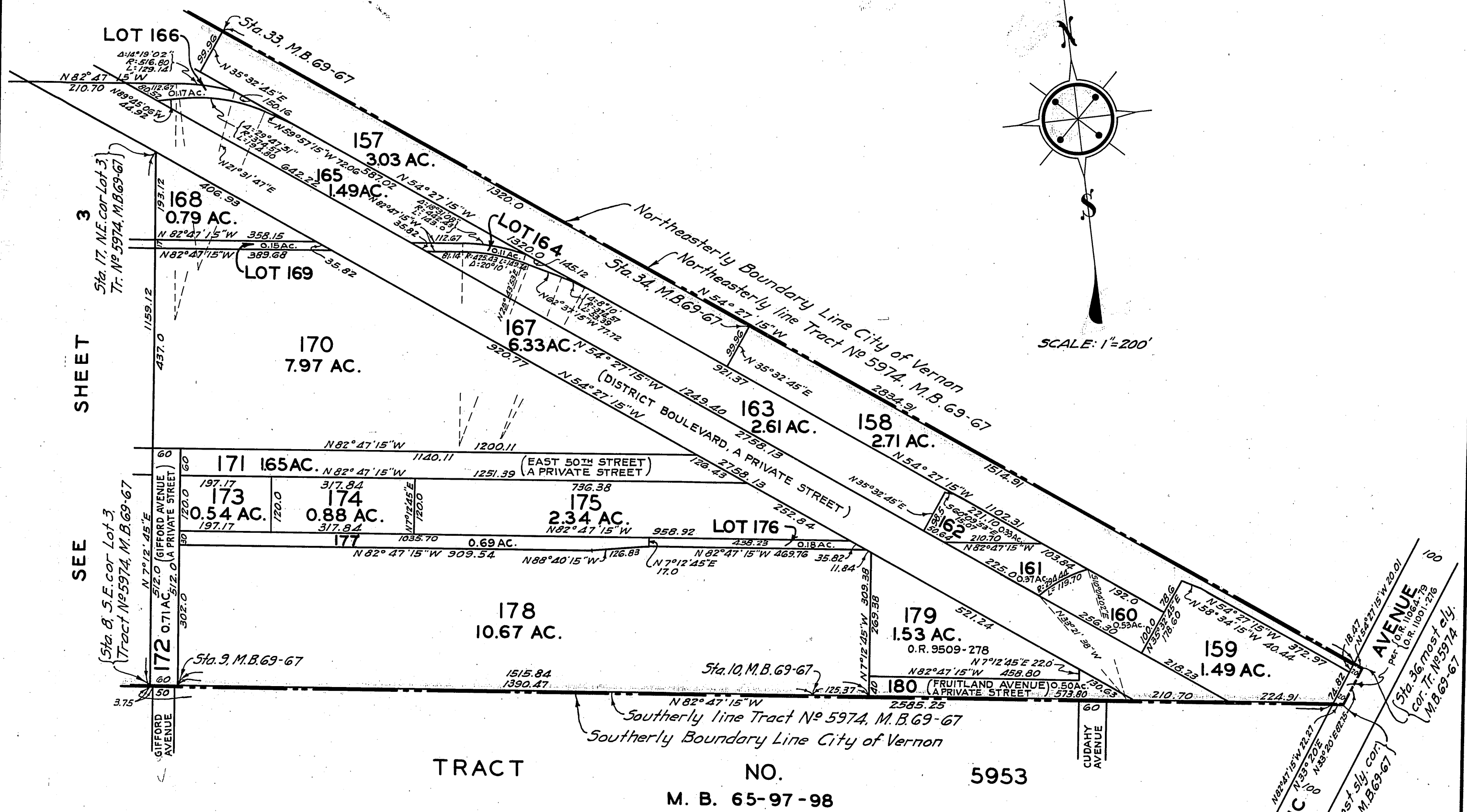
OFFICIAL MAP OF THE COUNTY OF LOS ANGELES REGION 48

DIVISION 106

SEE SHEET 3



SCALE: 1"=200'



DETAIL MAP
SCALE: 1"=100'
SEE SHEET 2