

# OFFICIAL MAP OF THE COUNTY OF LOS ANGELES REGION 18

## DIVISIONS 114, 115, 123, 127

IN THE CITY OF LOS ANGELES

BEING A REPLAT OF LOTS 4, 8, 27, 28, 29, 37, 38, 47, 59, 92 TO 113 INCLUSIVE, 158, & 159, DIVISION 114; LOTS 1 TO 7 INCLUSIVE, 11, 23, 25, 26, 27, & 32, DIVISION 115; LOTS 1, 2, 6, 7, 24, 34, 46, & 50, DIVISION 123; AND LOTS 8, & 13, DIVISION 127, ALL IN REGION 18, OF OFFICIAL MAP OF THE COUNTY OF LOS ANGELES, AS SHOWN ON MAP FILED IN BOOK 2, PAGES 49 TO 56 INCLUSIVE OF OFFICIAL MAPS, RECORDS OF THE COUNTY OF LOS ANGELES.

LOS ANGELES  
ALFRED JONES

CALIFORNIA

JUNE 1935  
COUNTY SURVEYOR

This map was prepared from a survey made by the Phillips and Hambaugh Realty and Construction Corporation and from data contained in certificates of title on file in the office of the Registrar of Titles of the County of Los Angeles.

The parcels excepted from, and marked, "Not a part of this map" comprise lots of the Official Map of the County of Los Angeles Region 18, Divisions 114, 115, 123, & 127, as shown on map filed in Book 2, pages 49 to 56 inclusive of Official Maps, records of the County of Los Angeles and the boundaries of said excepted parcels are coterminus with the boundaries of this map.

The bearings on this map are based on the bearings shown on map in Book 29 pages 1 to 18 of Record of Surveys, filed in the office of the Recorder of said County.

We hereby certify that on the \_\_\_\_\_ day of \_\_\_\_\_, 1935, the within map was approved and adopted as an official map by the Board of Supervisors of the County of Los Angeles by resolution duly adopted, as follows, to wit:

"WHEREAS, the Board of Supervisors of the County of Los Angeles, State of California, pursuant to the provisions of Section 3658 a of the Political Code of the State of California, did, by an order adopted on the 27<sup>th</sup> day of November 1933, direct the preparation by the County Surveyor of an official map of portions of Sections 23, and 26, Township 2 North, Range 14 West, San Bernardino Base and Meridian.

NOW THEREFORE be it resolved that this map entitled 'Official Map of the County of Los Angeles, Region 18, Divisions 114, 115, 123, and 127', be, and the same is hereby approved and adopted.

The foregoing resolution was on the \_\_\_\_\_ day of \_\_\_\_\_, 1935, adopted by the Board of Supervisors of the County of Los Angeles, State of California.

ATTEST: L. E. LAMPTON  
County Clerk and ex-officio Clerk  
of the Board of Supervisors of  
the County of Los Angeles.

By \_\_\_\_\_  
Deputy

-----  
Chairman of the Board of Supervisors  
Supervisor 1<sup>st</sup> District

-----  
Supervisor 2<sup>nd</sup> District

-----  
Supervisor 3<sup>rd</sup> District

-----  
Supervisor 4<sup>th</sup> District

-----  
Supervisor 5<sup>th</sup> District

L. E. LAMPTON  
County Clerk and ex-officio Clerk  
of the Board of Supervisors of  
the County of Los Angeles.

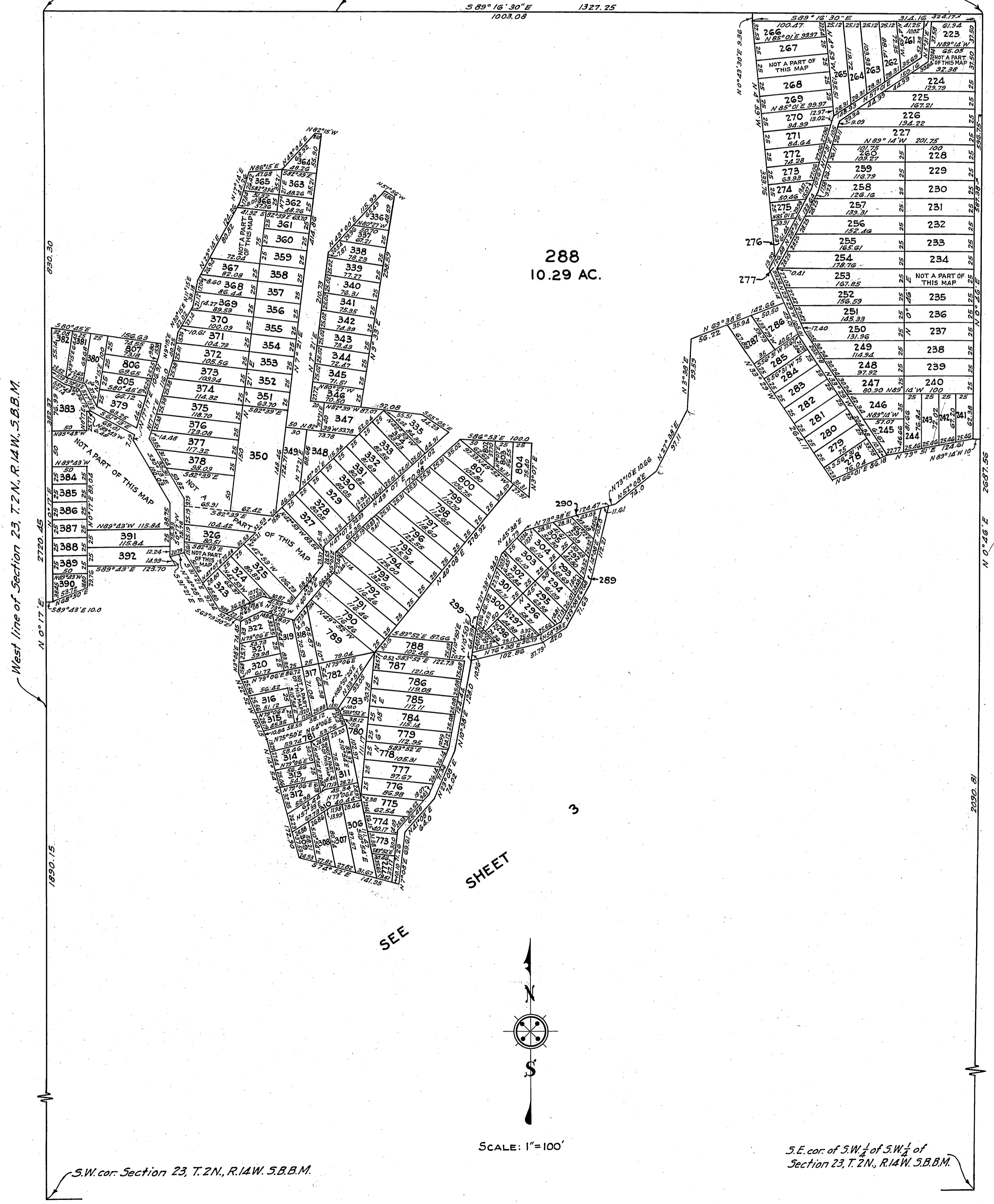
By \_\_\_\_\_  
Deputy

# OFFICIAL MAP OF THE COUNTY OF LOS ANGELES REGION 18 DIVISION 114

Northwesterly cor. Gov't. Lot 4,  
Section 23, T.2N., R.14W., S.B.B.M.

Southerly line of West portion of Tujunga Ranch  
M. R. 29-51-52

Northeasterly cor. Gov't. Lot 4,  
Section 23, T.2N., R.14W., S.B.B.M.



West line of Section 23, T.2N., R.14W., S.B.B.M.

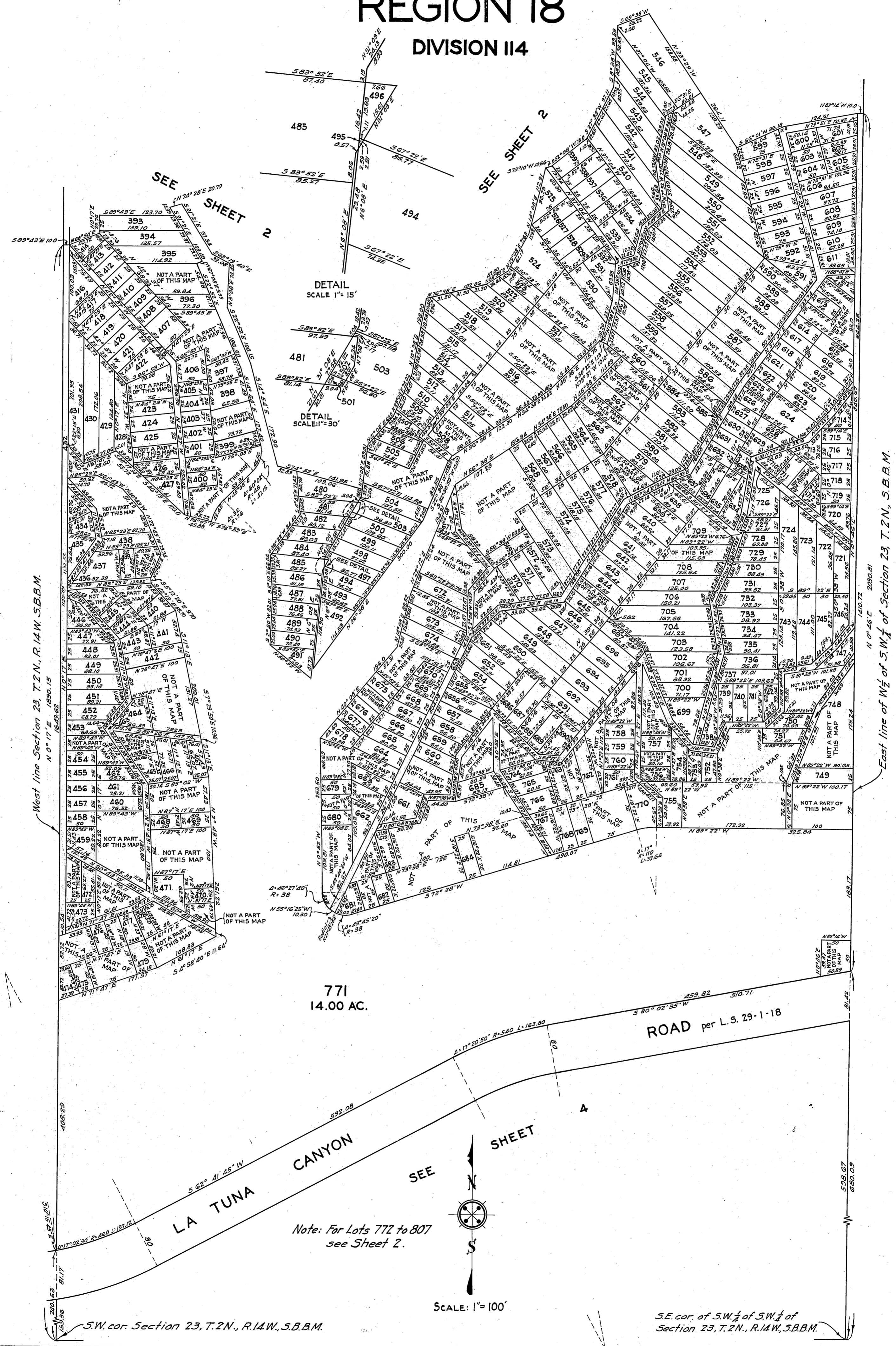
S.W. cor. Section 23, T.2N., R.14W., S.B.B.M.

S.E. cor. of S.W.  $\frac{1}{4}$  of S.W.  $\frac{1}{4}$  of  
Section 23, T.2N., R.14W., S.B.B.M.

# OFFICIAL MAP OF THE COUNTY OF LOS ANGELES

## REGION 18

### DIVISION II4



West line Section 23, T.2N., R.14W., S.B.M.

East line of N 1/2 of S.W. 1/4 of Section 23, T.2N., S.B.M.

771  
14.00 AC.

ROAD per L.S. 29-1-18

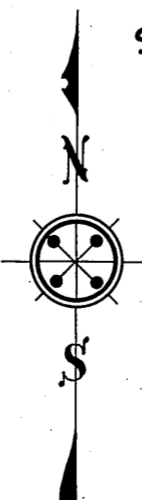
LA TUNA CANYON

Note: For Lots 772 to 807 see Sheet 2.

SCALE: 1" = 100'

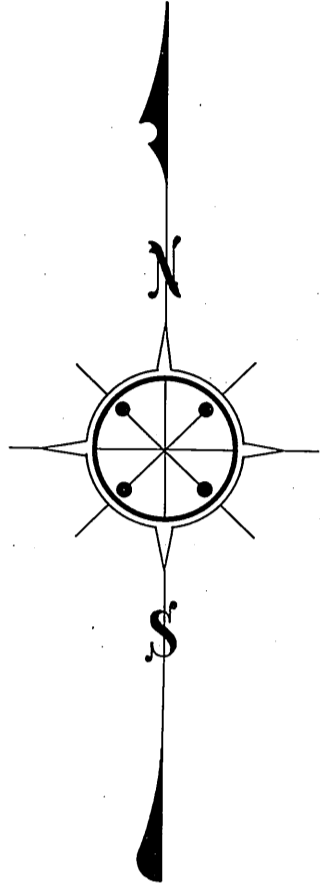
S.W. cor. Section 23, T.2N., R.14W., S.B.M.

S.E. cor. of S.W. 1/4 of S.W. 1/4 of Section 23, T.2N., R.14W., S.B.M.

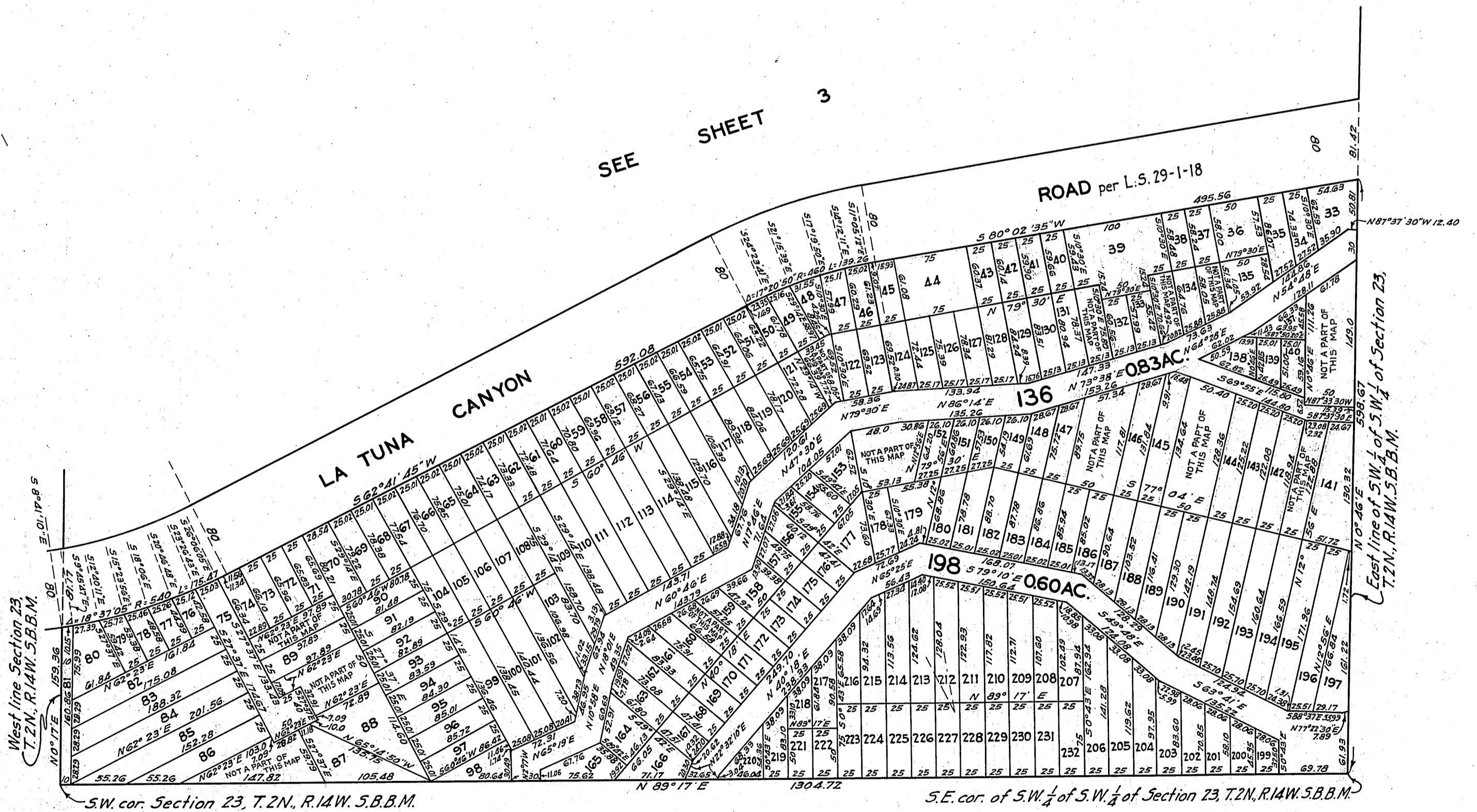


# OFFICIAL MAP OF THE COUNTY OF LOS ANGELES REGION 18

DIVISION 115



SCALE: 1"=100'

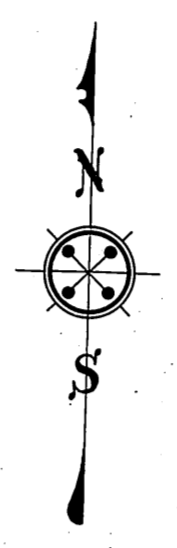


SEE SHEET 5

# OFFICIAL MAP OF THE COUNTY OF LOS ANGELES

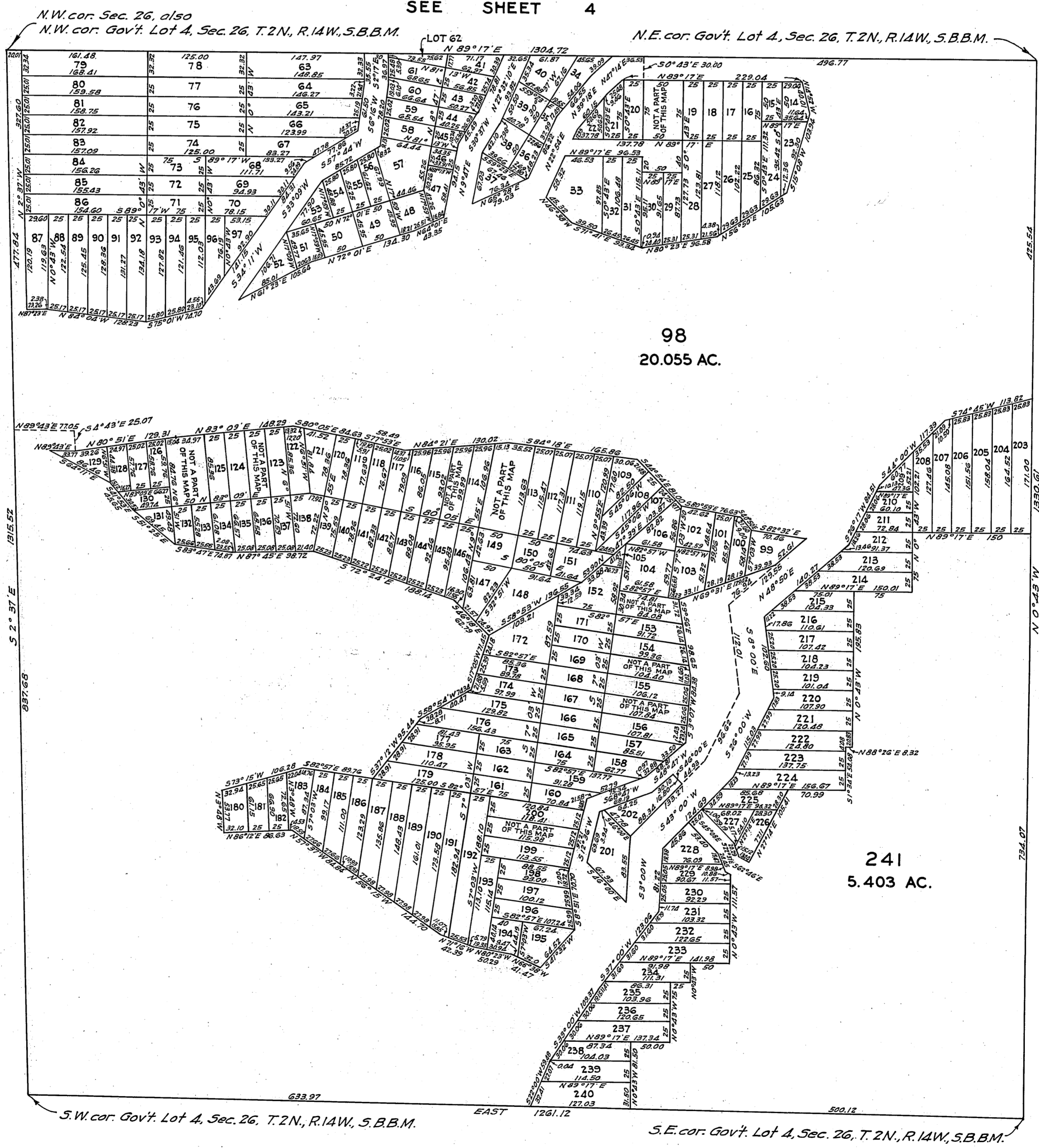
## REGION 18

### DIVISION 127



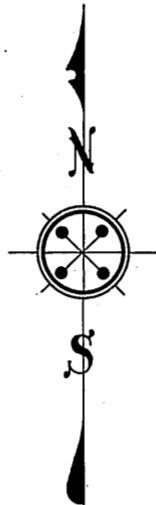
SCALE: 1" = 100'

SEE SHEET 4



SEE SHEET 6

# OFFICIAL MAP OF THE COUNTY OF LOS ANGELES REGION 18 DIVISION 123



SCALE: 1" = 100'

