

# PROPERTY OF SOUTHERN CALIFORNIA EDISON COMPANY LTD.

MAP NO. II

SHEET 1 OF 2 SHEETS

Filed x

29

4  
Maps

Surveyor

Partly in the City of Long Beach and partly in the City of Los Angeles.

To W. O. Hunt  
Deputy

Free

Being a subdivision of a portion of the 3365.95 Acre Tract allotted to Maria Dolores Dominguez de Watson in the partition of a part of the Rancho San Pedro, as shown on map filed in case No. 3284 of the Superior Court of the State of California in and for the County of Los Angeles.

Los Angeles

California

February 1938

Alfred Jones County Surveyor  
Scale 1 Inch = 100 Feet

The bearing, S 6° 18' 00" W, of the center line of Hobson Avenue as shown on County Surveyor's Map No. 6821, Records of Los Angeles County, was taken as the basis of bearings shown on this map.

This map was prepared from a survey made under the supervision of Geo. H. Starbuck, Licensed Surveyor and Engineer for the Southern California Edison Company Ltd. during Oct. 1928 and June 1933.

We hereby certify that on the 29th day of March 1938 the within map was approved and adopted as an official map by the Board of Supervisors of the County of Los Angeles by resolution duly adopted as follows, to wit:

WHEREAS, the Board of Supervisors of the County of Los Angeles, State of California, pursuant to the provisions of Section 3658a of the Political Code of the State of California, did, by an order adopted on the 7<sup>th</sup> day of December 1931, direct the preparation by the County Surveyor of an official map of portions of the property of Southern California Edison Company Ltd.

NOW THEREFORE, be it resolved that said map entitled "Property of Southern California Edison Company Ltd., Map No. II" be and the same is hereby approved and adopted.

The foregoing resolution was, on the 29th day of March 1938, adopted by the Board of Supervisors of the County of Los Angeles, State of California.

Attest: L. E. Lampton  
County Clerk and ex-officio Clerk of the Board of Supervisors of the County of Los Angeles.

By Wm. B. Beal  
Deputy

Robert J. Smith  
Chairman of the Board of Supervisors  
Supervisor 1<sup>st</sup> District

[Signature]  
Supervisor 2<sup>nd</sup> District

Frank McDonough  
Supervisor 2<sup>nd</sup> District

John Burton Ford  
Supervisor 3<sup>rd</sup> District

[Signature]  
Supervisor 4<sup>th</sup> District

L. E. Lampton  
County Clerk and ex-officio Clerk of the Board of Supervisors of the County of Los Angeles.

By Wm. B. Beal  
Deputy

M.B.A.

PROPERTY OF  
SOUTHERN CALIFORNIA EDISON COMPANY LTD.

MAP NO. 11

SHEET 2 OF 2 SHEETS

SCALE 1 INCH = 100 FEET

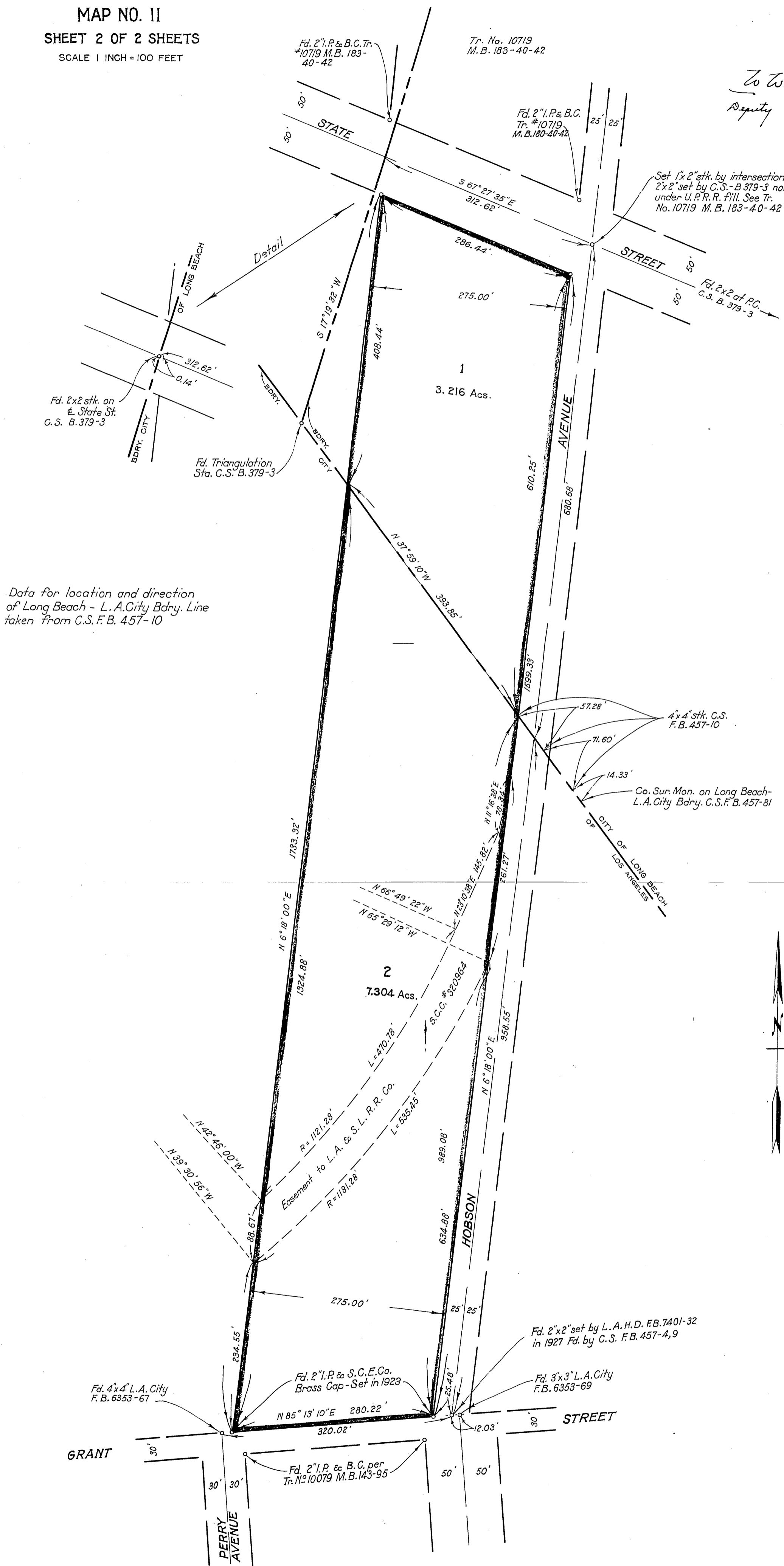
Filed x

29

4  
2  
Maps

Surveyor

To W. Olmsted  
Deputy Free



Data for location and direction  
of Long Beach - L.A. City Bdry. Line  
taken from C.S.F.B. 457-10

Set 1x2" stk. by intersection  
2x2" set by C.S. - B 379-3 now  
under U.R.R.R. Fill. See Tr.  
No. 10719 M.B. 183-40-42

4x4" stk. C.S.  
F.B. 457-10

Co. Sur. Mon. on Long Beach -  
L.A. City Bdry. C.S.F.B. 457-81

Fd. 2x2" set by L.A.H.D. F.B. 7401-32  
in 1927 Fd. by C.S. F.B. 457-4,9

Fd. 3x3" L.A. City  
F.B. 6353-69

Fd. 2" I.P. & B.C. per  
Tr. No. 10079 M.B. 143-95