

OFFICIAL MAP OF THE COUNTY OF LOS ANGELES REGION 36

DIVISIONS
1 & 28

IN THE CITY OF LOS ANGELES

BEING A PLAT OF PORTIONS OF LOTS 3,4,5,6,7 AND 8; ALL OF LOTS 9,10,11, AND 12; AND PORTIONS OF LOTS 13,19 AND 20, BOCA DE CAÑON, AS SHOWN ON MAP RECORDED IN BOOK 18, PAGE 90 OF MAPS; AND A REPLAT OF LOT 37, DIVISION 1, REGION 36, AS SHOWN ON MAP RECORDED IN BOOK 1, PAGE 85 OF OFFICIAL MAPS; ALL RECORDS OF LOS ANGELES COUNTY; ALSO PORTIONS OF MANDEVILLE CANYON ROAD AS VACATED BY ORDINANCE NO. 75848 (N.S.) OF THE CITY OF LOS ANGELES.

LOS ANGELES CALIFORNIA JANUARY 1940
ALFRED JONES COUNTY SURVEYOR

THIS MAP WAS PREPARED FROM SURVEYS MADE BY THE ENGINEERING DEPARTMENT OF THE LOS ANGELES MOUNTAIN PARK CO., FROM RECORDED DEEDS AND FROM THE LOS ANGELES COUNTY ASSESSOR'S RECORDS.

BEARINGS ARE BASED ON COUNTY SURVEYOR'S MAP No. 5355.

WE HEREBY CERTIFY THAT ON THE _____ DAY OF _____, 1940, THE WITHIN MAP WAS APPROVED AND ADOPTED AS AN OFFICIAL MAP BY THE BOARD OF SUPERVISORS OF THE COUNTY OF LOS ANGELES BY RESOLUTION DULY ADOPTED, AS FOLLOWS, TO-WIT:

"WHEREAS THE BOARD OF SUPERVISORS OF THE COUNTY OF LOS ANGELES, STATE OF CALIFORNIA, PURSUANT TO THE PROVISIONS OF SECTION 3658 A OF THE POLITICAL CODE OF THE STATE OF CALIFORNIA, DID, BY ORDER ADOPTED ON THE 8TH DAY OF AUGUST, 1939, DIRECT THE PREPARATION BY THE COUNTY SURVEYOR OF AN OFFICIAL MAP OF PROPERTY IN THE BOCA DE CAÑON TRACT,

NOW THEREFORE BE IT RESOLVED THAT THIS MAP ENTITLED "OFFICIAL MAP OF THE COUNTY OF LOS ANGELES, REGION 36, DIVISIONS 1 AND 28," BE AND THE SAME IS HEREBY APPROVED AND ADOPTED.

THE FOREGOING RESOLUTION WAS ON THE _____ DAY OF _____, 1940, ADOPTED BY THE BOARD OF SUPERVISORS OF THE COUNTY OF LOS ANGELES, STATE OF CALIFORNIA.

ATTEST: L.E. LAMPTON
COUNTY CLERK AND EX-OFFICIO CLERK
OF THE BOARD OF SUPERVISORS OF
THE COUNTY OF LOS ANGELES.

BY _____"
DEPUTY

CHAIRMAN OF THE BOARD OF SUPERVISORS
SUPERVISOR 5TH DISTRICT

SUPERVISOR 1ST DISTRICT

SUPERVISOR 2ND DISTRICT

SUPERVISOR 3RD DISTRICT

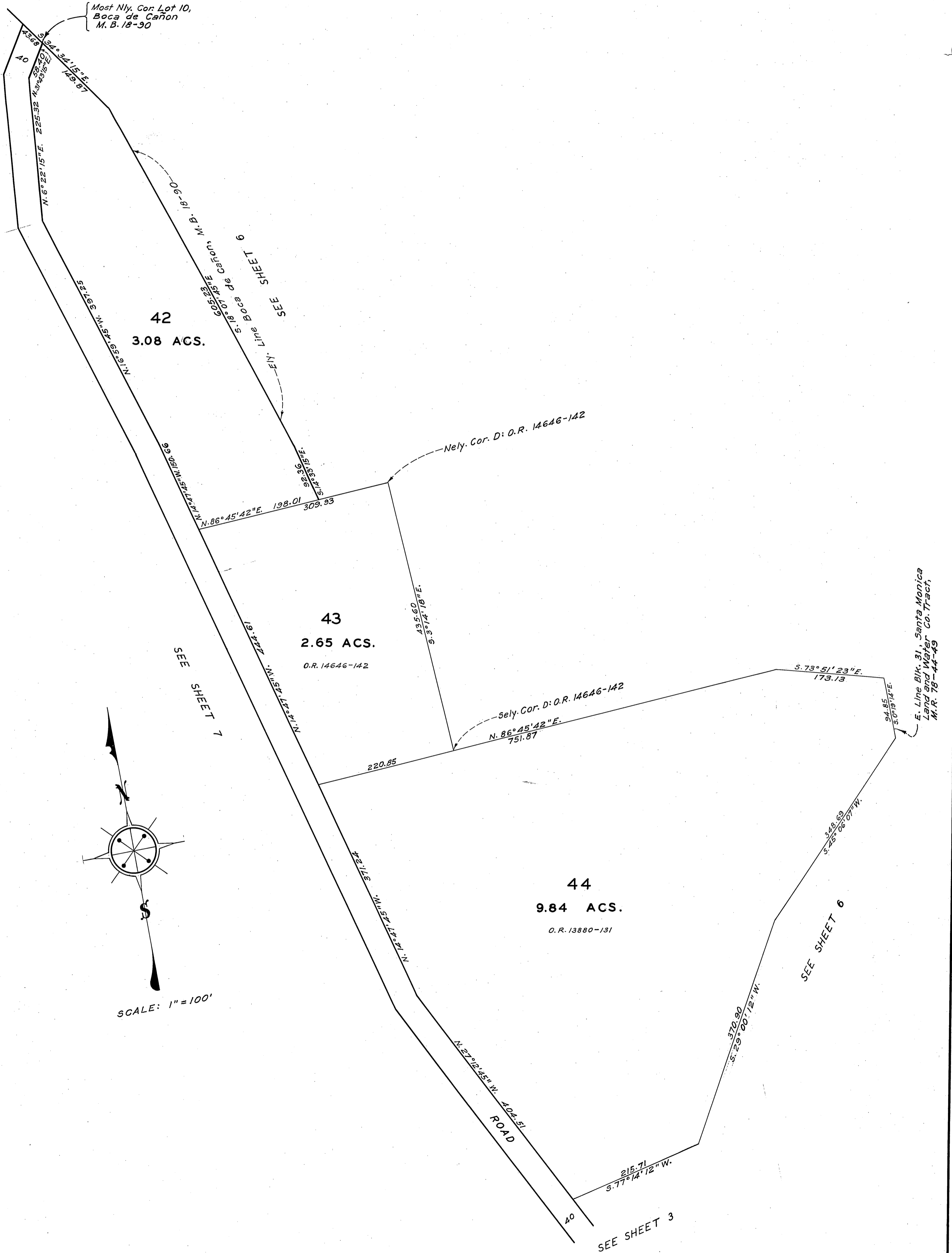
SUPERVISOR 4TH DISTRICT

L.E. LAMPTON
COUNTY CLERK AND EX-OFFICIO CLERK
OF THE BOARD OF SUPERVISORS OF
THE COUNTY OF LOS ANGELES.

BY _____
DEPUTY

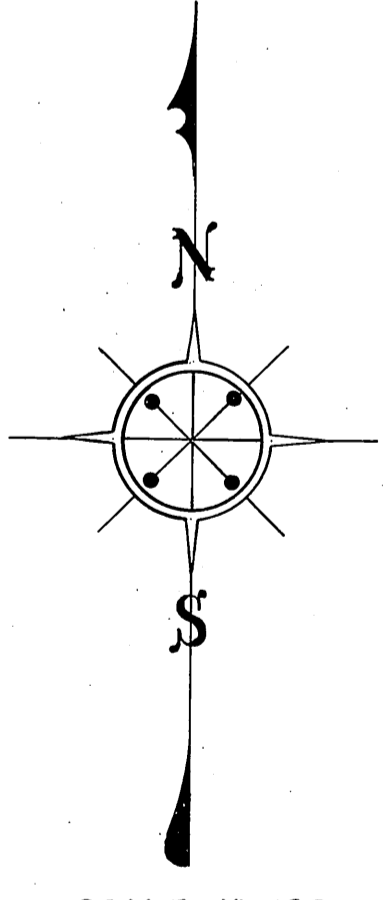
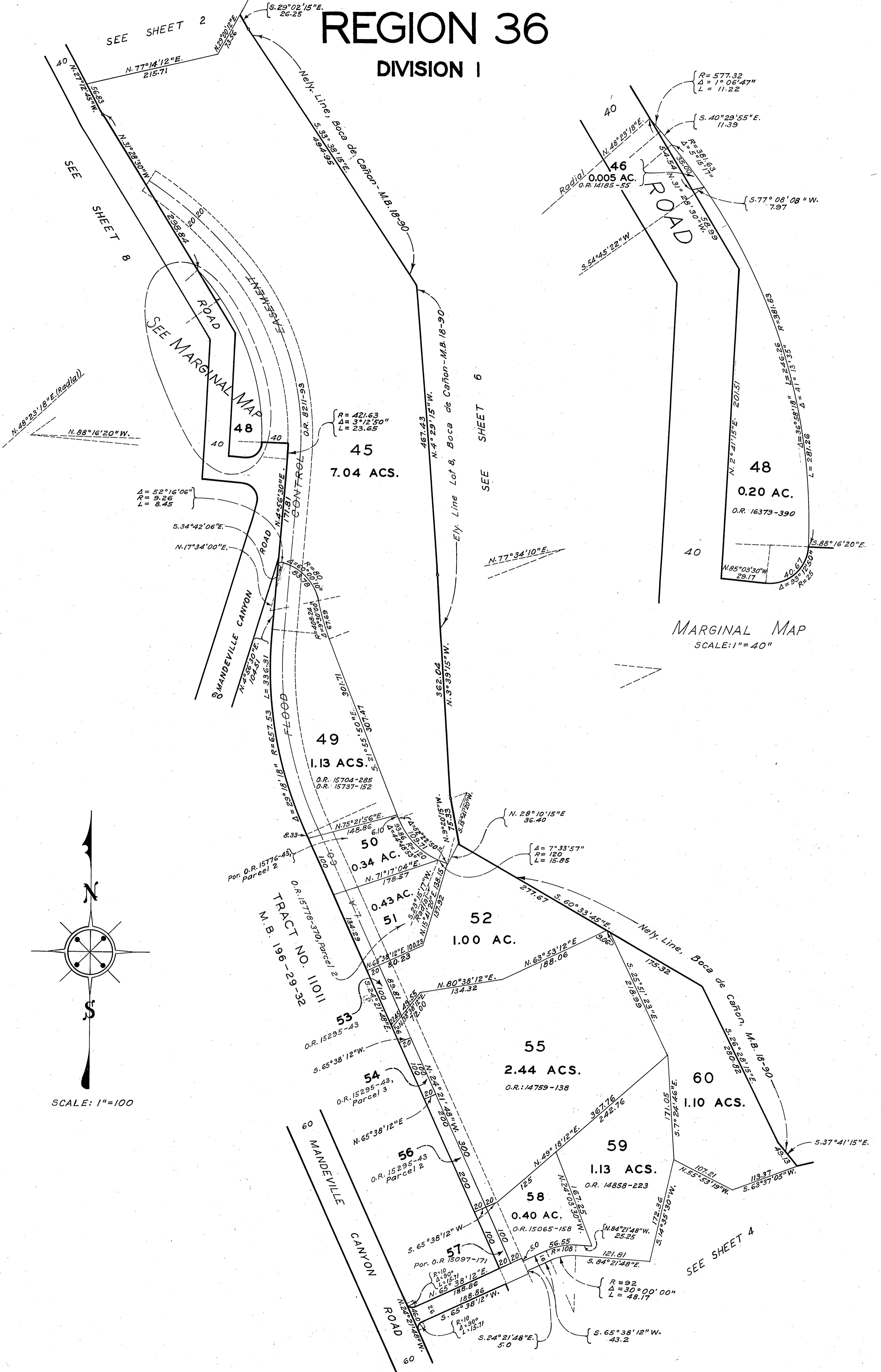
OFFICIAL MAP OF THE COUNTY OF LOS ANGELES REGION 36

DIVISION I



OFFICIAL MAP OF THE COUNTY OF LOS ANGELES REGION 36

DIVISION I



MARGINAL MAP
SCALE: 1" = 40"

SEE SHEET 2

SEE SHEET 8

SEE SHEET 6

SEE SHEET 4

SEE MARGINAL MAP

TRACT NO. 11011
M.B. 196-29-32

CONTROL

FLOOD

Por. O.R. 15776-43
Parcel 2

Por. O.R. 15295-43
Parcel 3

Por. O.R. 15097-171
Parcel 2

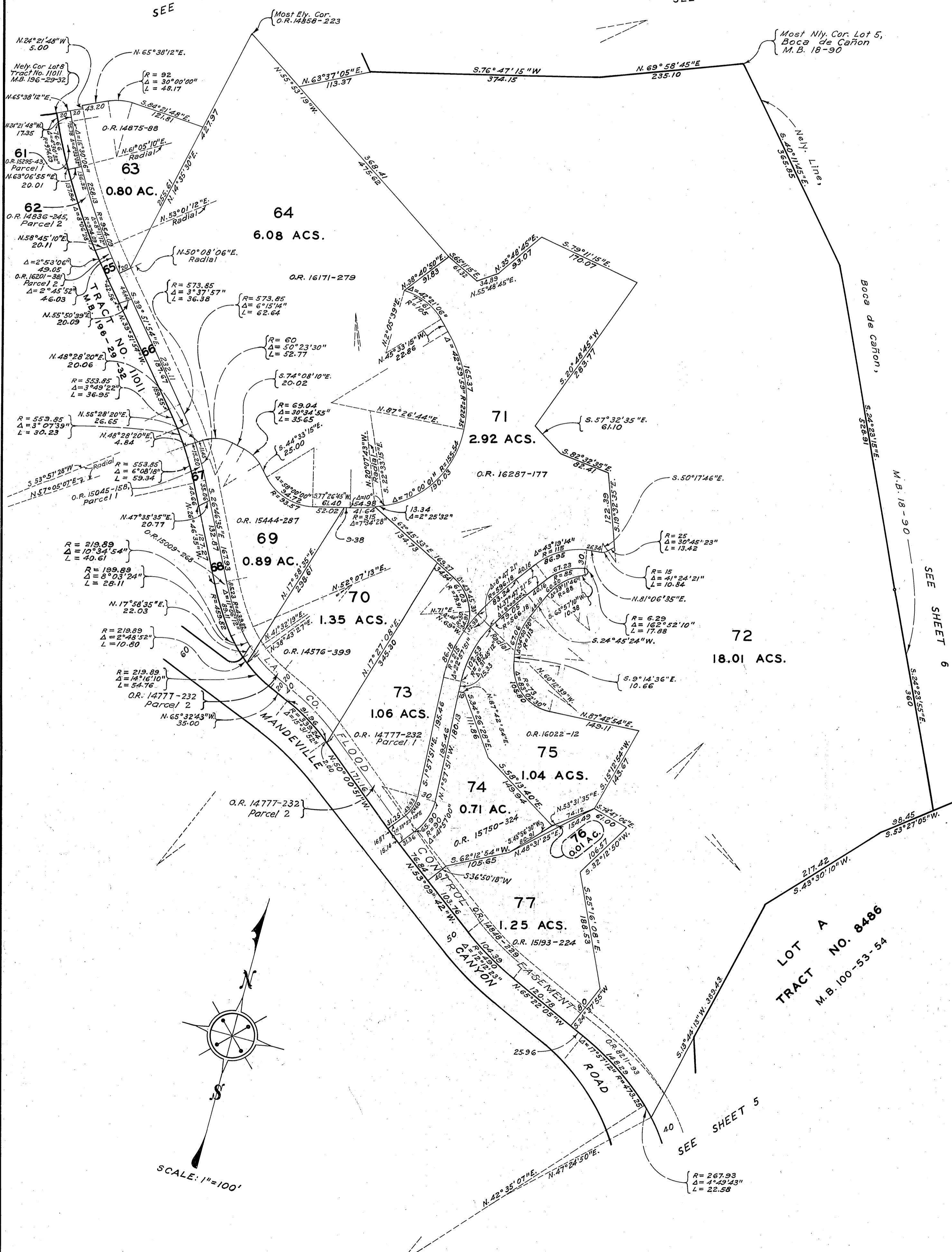
Por. O.R. 15097-171
Parcel 1

Por. O.R. 15097-171
Parcel 1

OFFICIAL MAP OF THE COUNTY OF LOS ANGELES REGION 36 DIVISION I

SEE SHEET 3

SEE SHEET 6

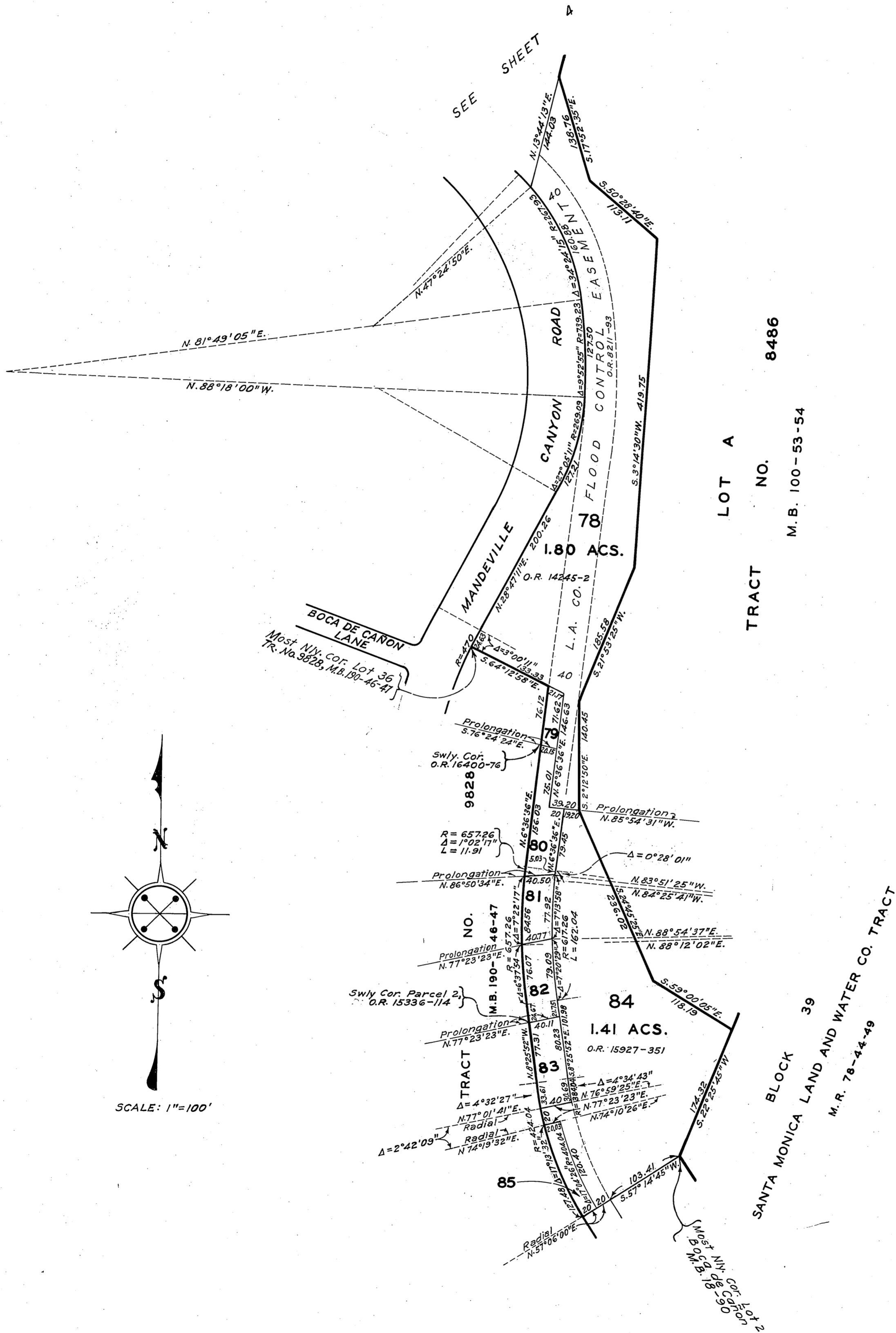


LOT A
TRACT NO. 8486
M.B. 100-53-54

SCALE: 1"=100'

OFFICIAL MAP OF THE COUNTY OF LOS ANGELES REGION 36

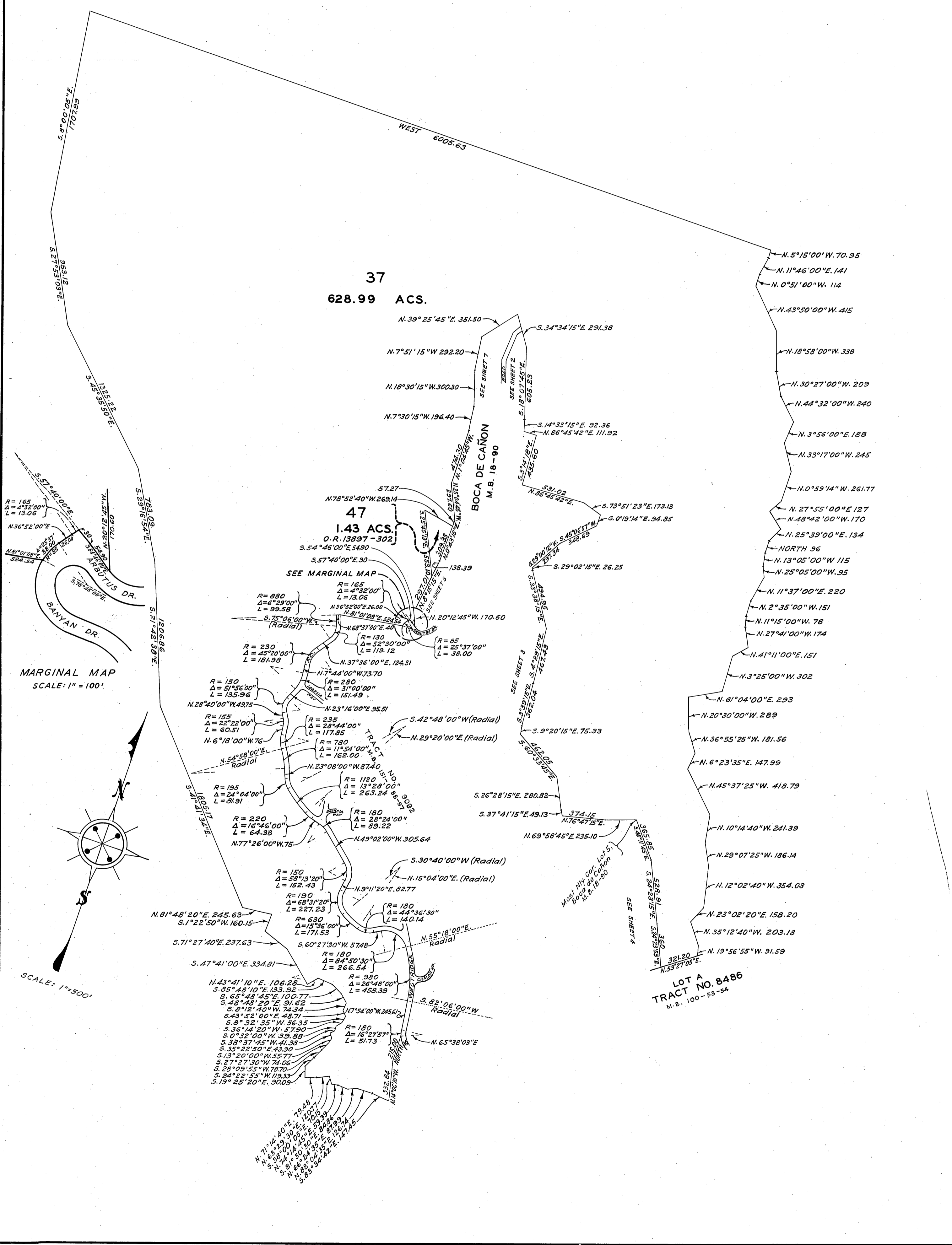
DIVISION I



OFFICIAL MAP OF THE COUNTY OF LOS ANGELES

REGION 36

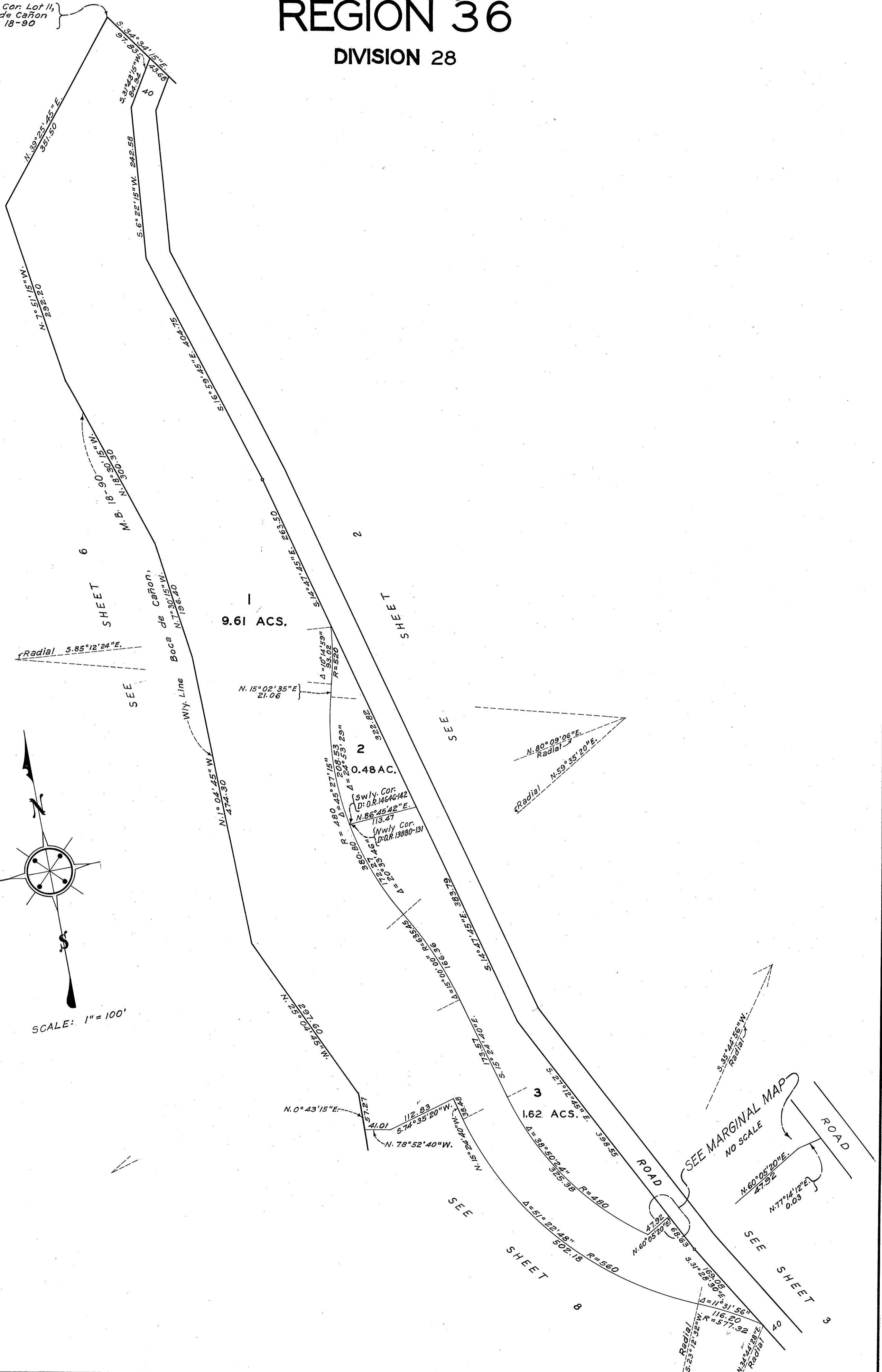
DIVISION I



OFFICIAL MAP OF THE COUNTY OF LOS ANGELES REGION 36

DIVISION 28

Most Nly. Cor. Lot II,
Boca de Cañon
M. B. 18-90



OFFICIAL MAP OF THE COUNTY OF LOS ANGELES REGION 36

DIVISION 28

