

OFFICIAL MAP OF A PORTION OF THE CITY OF AVALON SANTA CATALINA ISLAND IN THE COUNTY OF LOS ANGELES, STATE OF CALIFORNIA

Filed 15
REVISOR'S
Dec 26 1944
3 3 PM
H
15
Official
MAPS

SHOWING AN ADJUSTMENT OF TRACT NO 3741, AS PER BOOK 40 PAGE 57 OF MAPS, AND LOTS V, W, F AND 28 TO 108 INCLUSIVE OF EAST AVALON TERRACE, AS PER BOOK 9 PAGE 74 OF MAPS, BASED ON RECORD OF SURVEY WHICH ESTABLISHED THE COORDINATES OF EXISTING MONUMENTS, FOUND IN GOOD ORDER. LOTS V AND F HAVE BEEN MADE 25.0 FEET AND 30.0 FEET IN WIDTH, RESPECTIVELY, EXCEPT AT THEIR NORTHEASTERLY END. AND A PORTION OF THE TOWN OF AVALON AS PER MAP RECORDED IN BOOK 34, PAGE 67 ET. SEQ. MISCELLANEOUS RECORDS OF SAID COUNTY.

MAP FILED IN BOOK 48
PAGES 5 AND 6 RECORD
OF SAID COUNTY

IN REAPPROVAL OF THE OFFICIAL MAP OF A PORTION OF THE CITY OF AVALON, IN THE VICINITY OF EAST AVALON TERRACE, IN ACCORDANCE WITH SECTION 3658a OF THE POLITICAL CODE STATE OF CALIFORNIA
Whereas; Considerable discrepancies were found between the actual location of several monuments and the recorded data for same, on East Avalon Terrace, City of Avalon, the City Engineer of said City has been directed to make a map of said property; Now therefore, by this Resolution duly made and adopted by the City Council of the City of Avalon, at a regular meeting thereof, it is hereby ordered that the attached map of said portion of the City of Avalon be and the same is hereby approved and adopted as the Official Map of said portion of the City of Avalon, in accordance with Section 3658a of the Political Code of the State of California for the uses and purposes therein mentioned.
The City Clerk of the City of Avalon is hereby directed to endorse on the face of said map a copy of this order attested by the official seal of the City of Avalon. Adopted November 17, 1944

W. L. White
Mayor
Robert H. ...
Councilman
Raymond E. Madney
Councilman
Edith L. McKay
City Clerk of the City of Avalon

I, E. R. Pollok, hereby certify that I am the City Engineer of the City of Avalon, County of Los Angeles, State of California, and that this map, consisting of 4 sheets, was made under my direction August 1939 in accordance with Section 3658a of the Political Code of the State of California, and under the direction and with the approval of the City Council of the City of Avalon.
E. R. Pollok
City Engineer of the City of Avalon

The Bearing of the City Engineer's center line of Clavessa Avenue as shown on Tract No. 3368 in Book 31 Pages 3 to 7 of Maps was taken as the basis of bearing for this map.

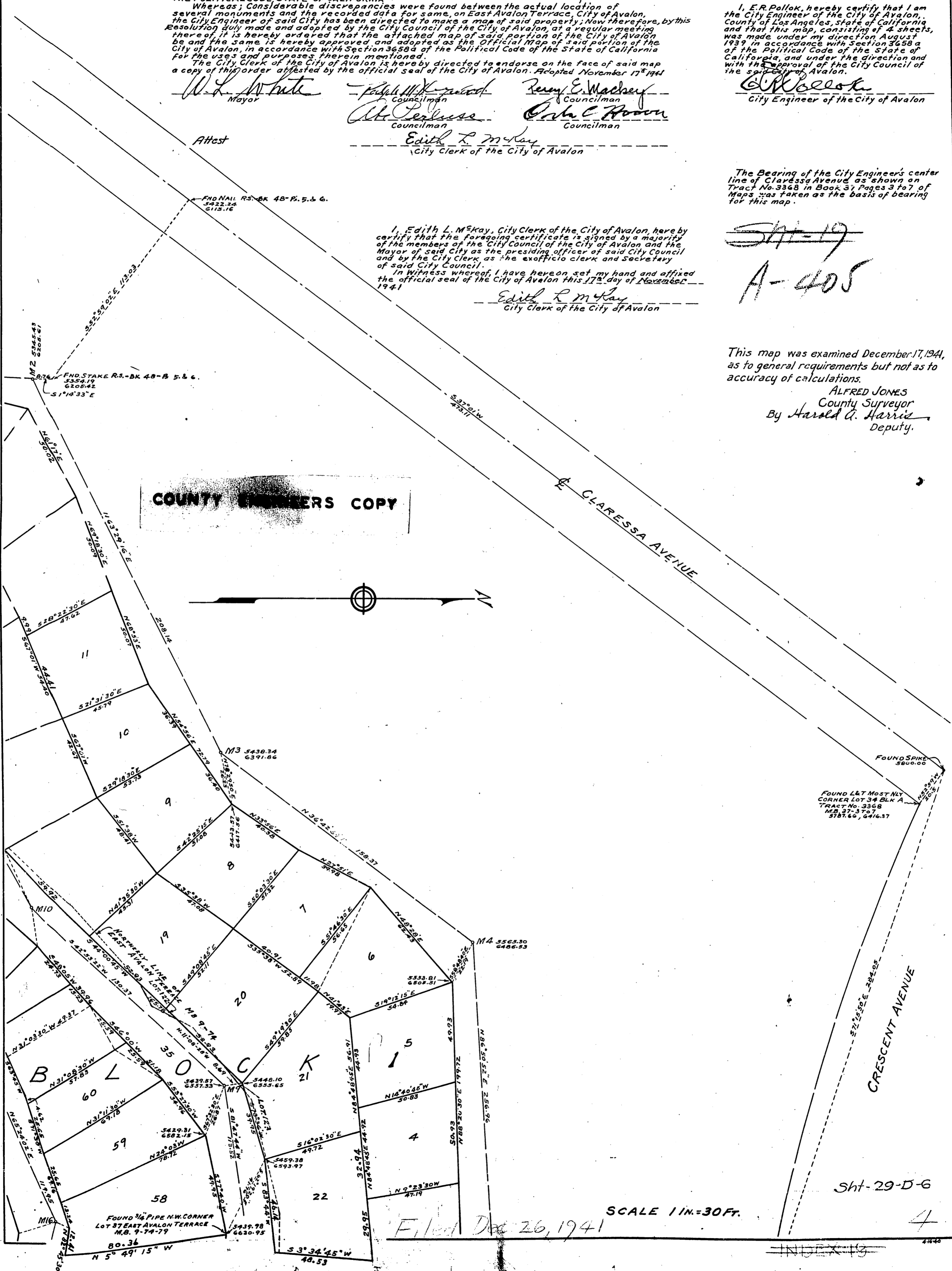
I, Edith L. McKay, City Clerk of the City of Avalon, hereby certify that the foregoing certificate is signed by a majority of the members of the City Council of the City of Avalon and the Mayor of said City as the presiding officer of said City Council and by the City Clerk as the ex officio clerk and secretary of said City Council.
In Witness whereof, I have hereon set my hand and affixed the official seal of the City of Avalon this 17th day of November, 1944.

Edith L. McKay
City Clerk of the City of Avalon

This map was examined December 17, 1944, as to general requirements but not as to accuracy of calculations.

ALFRED JONES
County Surveyor
By *Harold G. Harris*
Deputy.

COUNTY ENGINEERS COPY



SCALE 1 IN. = 30 FT.

Filed Dec 26, 1944

Sht-29-D-6

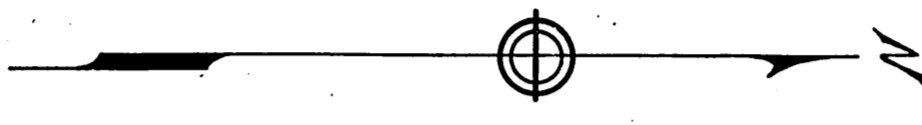
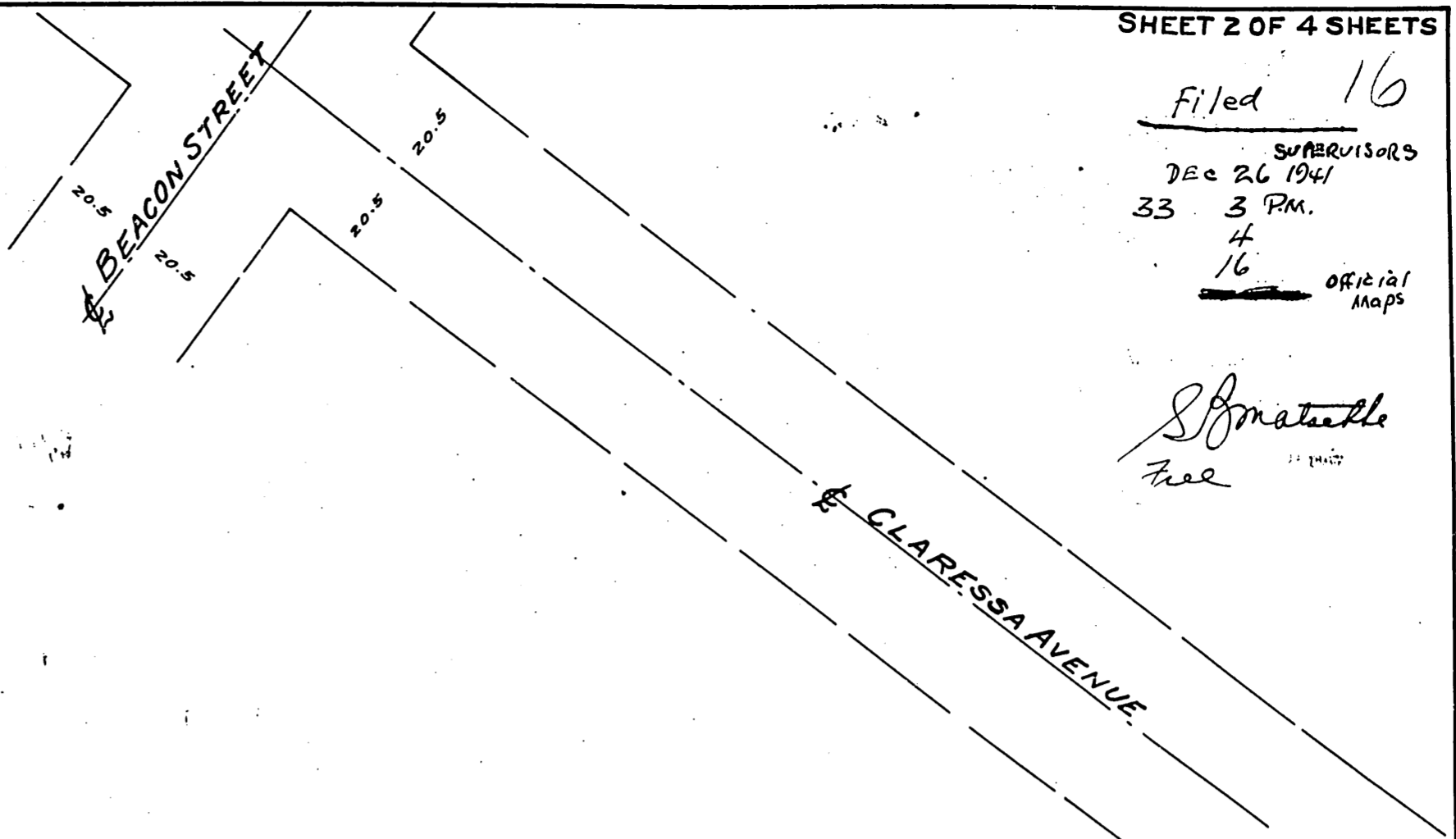
4

Filed 16

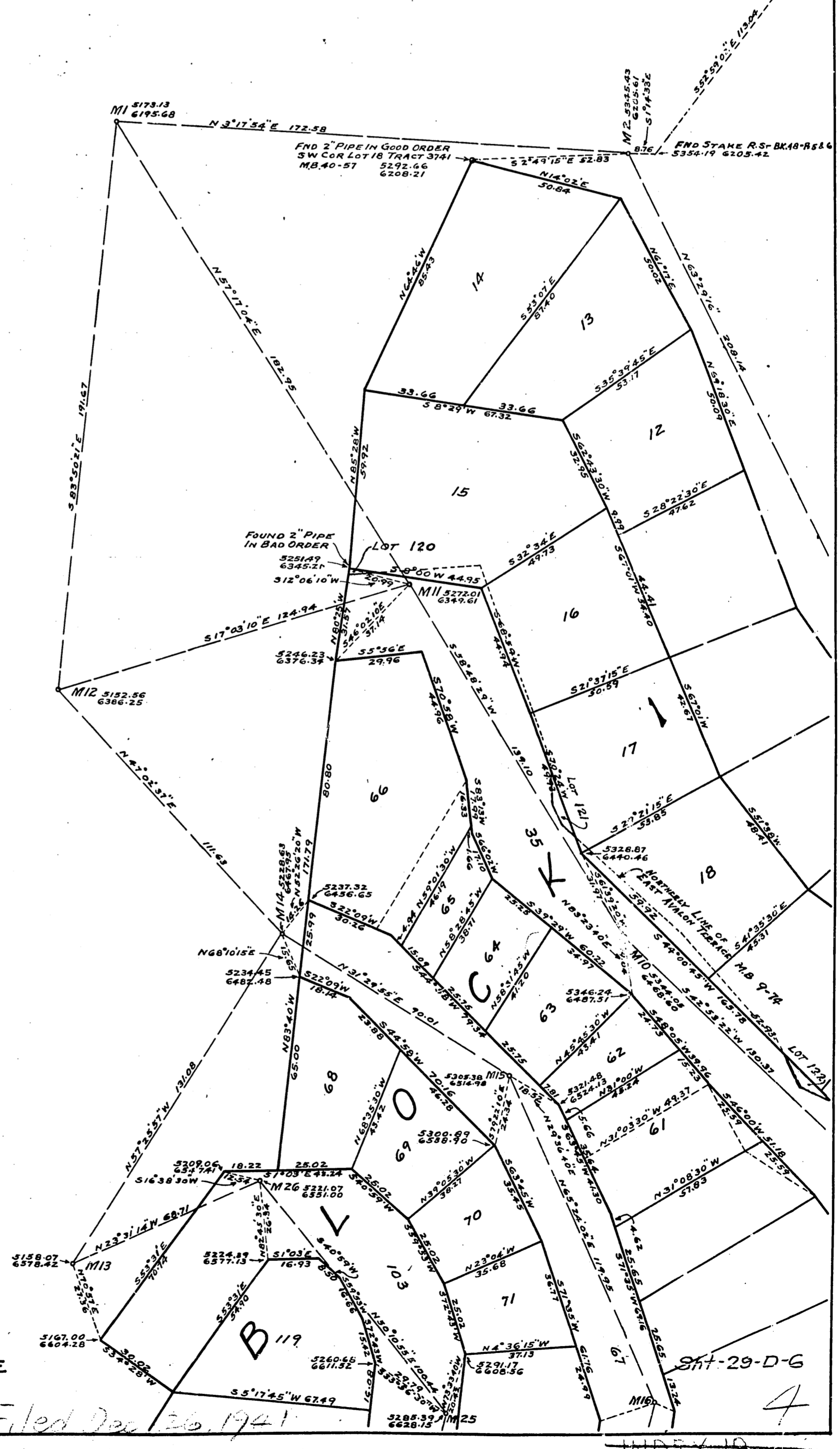
SUPERVISORS
DEC 26 1941
33 3 PM.
4
16
Official
Maps

S. J. Matrella
free

COUNTY ENGINEERS COPY



Sht-19
A-405



SCALE 1"=30 FT.

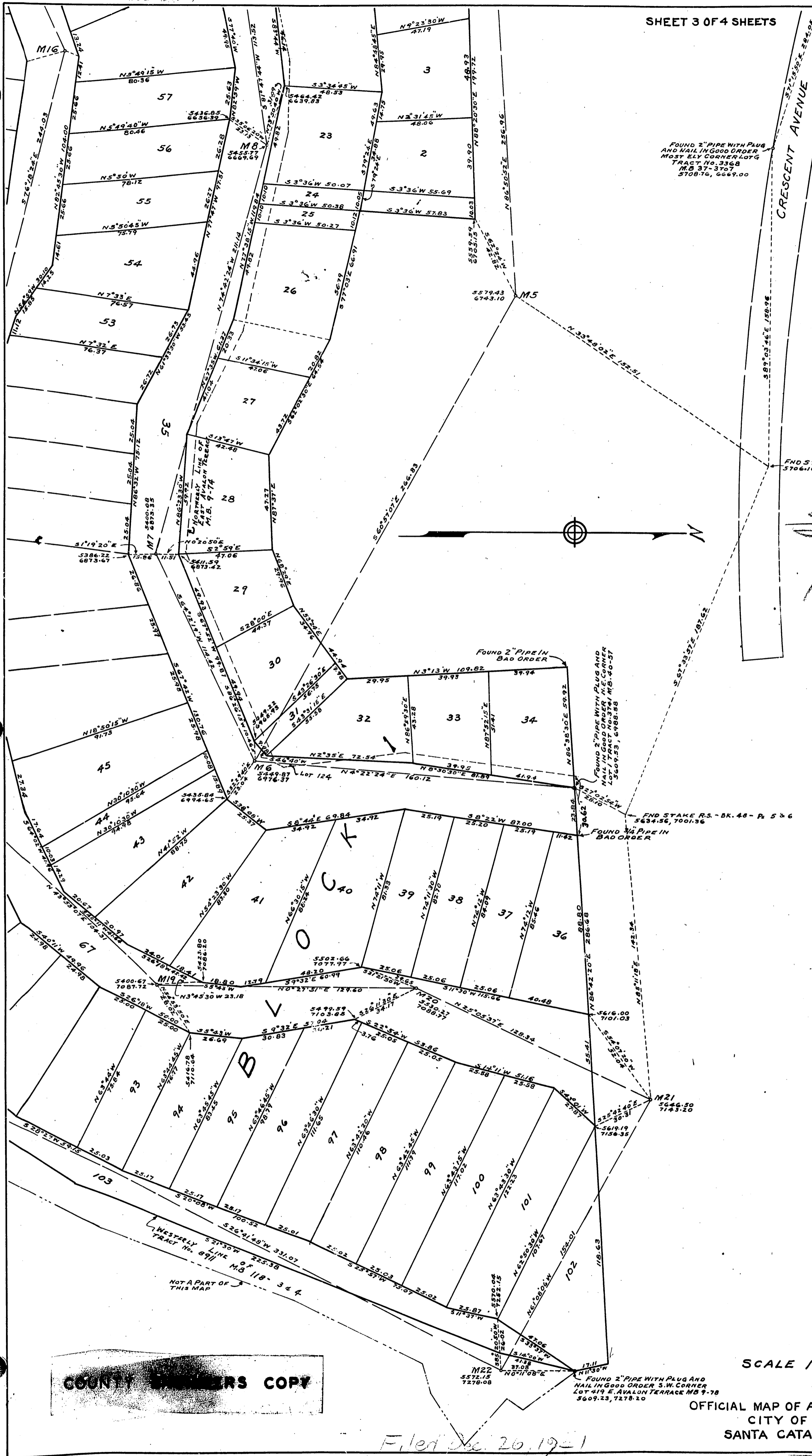
OFFICIAL MAP OF A PORTION OF THE
CITY OF AVALON
SANTA CATALINA ISLAND

Filed Dec 26 1941

Sht-29-D-6

4

INDEX 10

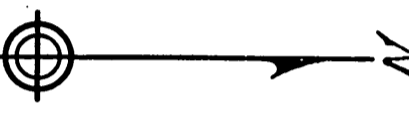


Filed
 SUPERVISORS
 DEC 26 1941
 3 3 PM.
 4
 17
 OFFICIAL
 MAPS

S. Matalka
 free

FOUND STAKE RS-BK-48-P. 5 & 6.
 570616, 4827.94

Sht 19
A-405



COUNTY ENGINEERS COPY

SCALE 1 IN. = 30 FT.

Sht-29-D-6
 OFFICIAL MAP OF A PORTION OF THE
 CITY OF AVALON
 SANTA CATALINA ISLAND

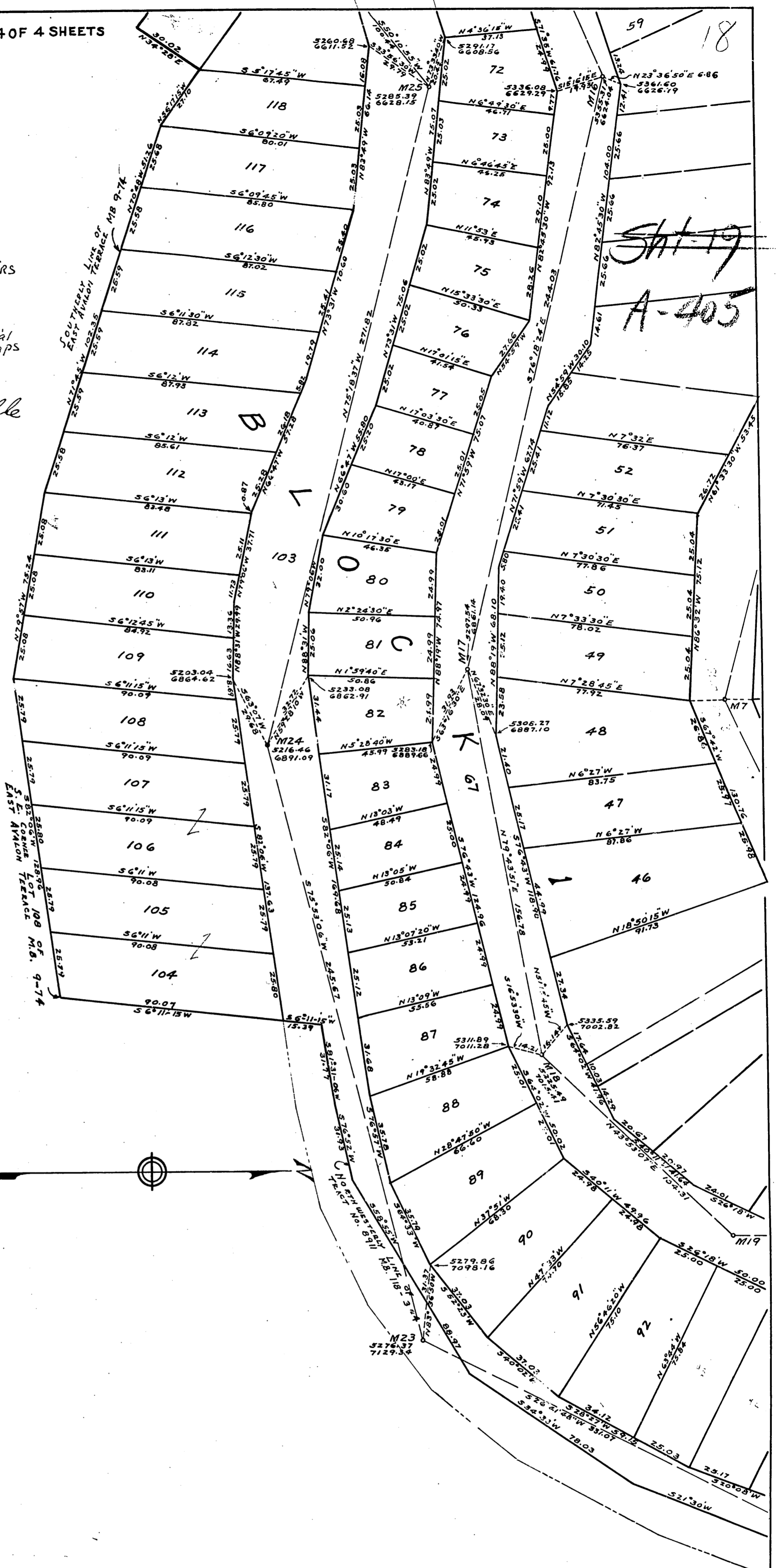
Filed Dec. 26, 1941

INDEX

COUNTY RECORDERS COPY

Filed
SUPERVISORS
DEC. 26 AM
33 3 P.M.
4
18
Official
Maps

S. Matichle
Free



Sht-19
A-405

Sht-29-D-6

OFFICIAL MAP OF A PORTION OF THE
CITY OF AVALON
SANTA CATALINA ISLAND

SCALE 1 IN. = 30 FT.

Filed Dec 26, 1941

INDEX 13

4