

# OFFICIAL MAP OF THE COUNTY OF LOS ANGELES REGION 36

## DIVISION 2

IN THE CITY OF LOS ANGELES

BEING A PLAT OF LOTS 11 TO 33 INCL., DIVISION 2, REGION 36,  
OF OFFICIAL MAP OF THE COUNTY OF LOS ANGELES AS SHOWN ON MAP FILED IN BOOK  
1, PAGES 87 AND 88 OF OFFICIAL MAPS; BEING ALSO ALL OF BLOCKS 19, 20, 28, 29, 36, AND PORTIONS  
OF BLOCKS 9, 10, 11, 12, 18, 21, 26, 27, 30, 31, 35, 37, 38, 41 AND 42 OF SANTA MONICA LAND AND  
WATER CO. TRACT, AS SHOWN ON MAP RECORDED IN BOOK 78, PAGES 44 TO 49 INCL., OF MIS-  
CELLANEOUS RECORDS; ALL RECORDS OF LOS ANGELES COUNTY.

2318  
May 14, 1948  
5:21 P.M.  
OFFICIAL 19  
4  
5

Los Angeles  
C.E. Arnold

California

December 1947  
County Surveyor

to Woodbury  
Free

This map was prepared from surveys made by the Engineering Department of the Los Angeles Mountain Park Co., the Engineering Department of Mountain Park Associates, Inc., from recorded deeds and from the Los Angeles County Assessor's Records.

Bearings are based on County Surveyor's map No. 5355.

We hereby certify that on the 27<sup>th</sup> day of April, 1948, the within map was approved and adopted as an official map by the Board of Supervisors of the County of Los Angeles by resolution duly adopted, as follows, to-wit:

"WHEREAS, the Board of Supervisors of the County of Los Angeles, State of California, pursuant to the provisions of section 11650 et seq of the Business and Professions Code of the State of California, did, by an order adopted on the 16<sup>th</sup> day of December 1947, direct the preparation by the County Surveyor of a new official map covering Lots 11 to 33, Incl, as shown on map filed in Book 1, pages 87 & 88, of Official Maps, in the office of the Recorder."

NOW THEREFORE be it resolved that this map entitled "Official Map of the County of Los Angeles, Region 36, Division 2," be and the same is hereby approved and adopted.

The foregoing resolution was on the 27<sup>th</sup> day of April 1948, adopted by the Board of Supervisors of the County of Los Angeles, State of California.

ATTEST: EARL O. LIPPOLD  
County Clerk and ex-officio Clerk of the Board of Supervisors of the County of Los Angeles.

By Inez Robinson Deputy

Raymond V. Daily  
Chairman of the Board of Supervisors  
Supervisor 4<sup>th</sup> District

William A. Smith  
Supervisor 1<sup>st</sup> District

Roger W. Joseph  
Supervisor 5<sup>th</sup> District

John Brown Ford  
Supervisor 3<sup>rd</sup> District

Leona J. Rouch  
Supervisor 2<sup>nd</sup> District

EARL O. LIPPOLD  
County Clerk and ex-officio Clerk of the Board of Supervisors of the County of Los Angeles.

By Inez Robinson Deputy

# OFFICIAL MAP OF THE COUNTY OF LOS ANGELES REGION 36

DIVISION 2

May 14, 1948  
57 2 P.M.  
OFFICIAL 20  
5

S'y. Line Lot 10, Division 2,  
Region 36, per O.M. 1-87

East  
3184.79

b. woodbury  
Tree

3

SHEET

SEE

41  
322.49 ACRES

LOT 42  
0.45 AC.

43  
16.87 ACRES

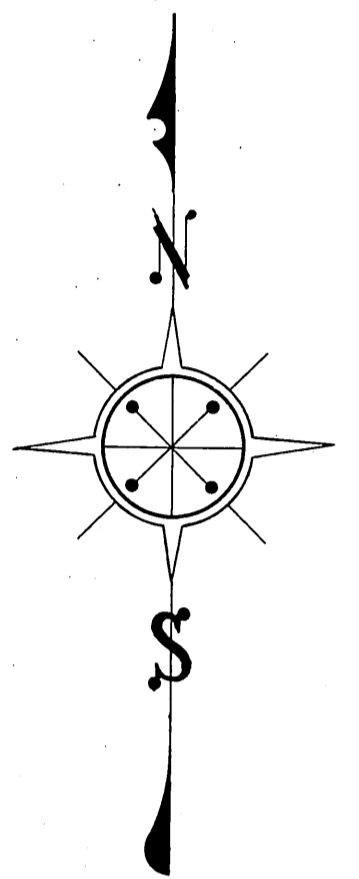
RESIDA BLDG  
R-4540

East 2741.83 1869.76

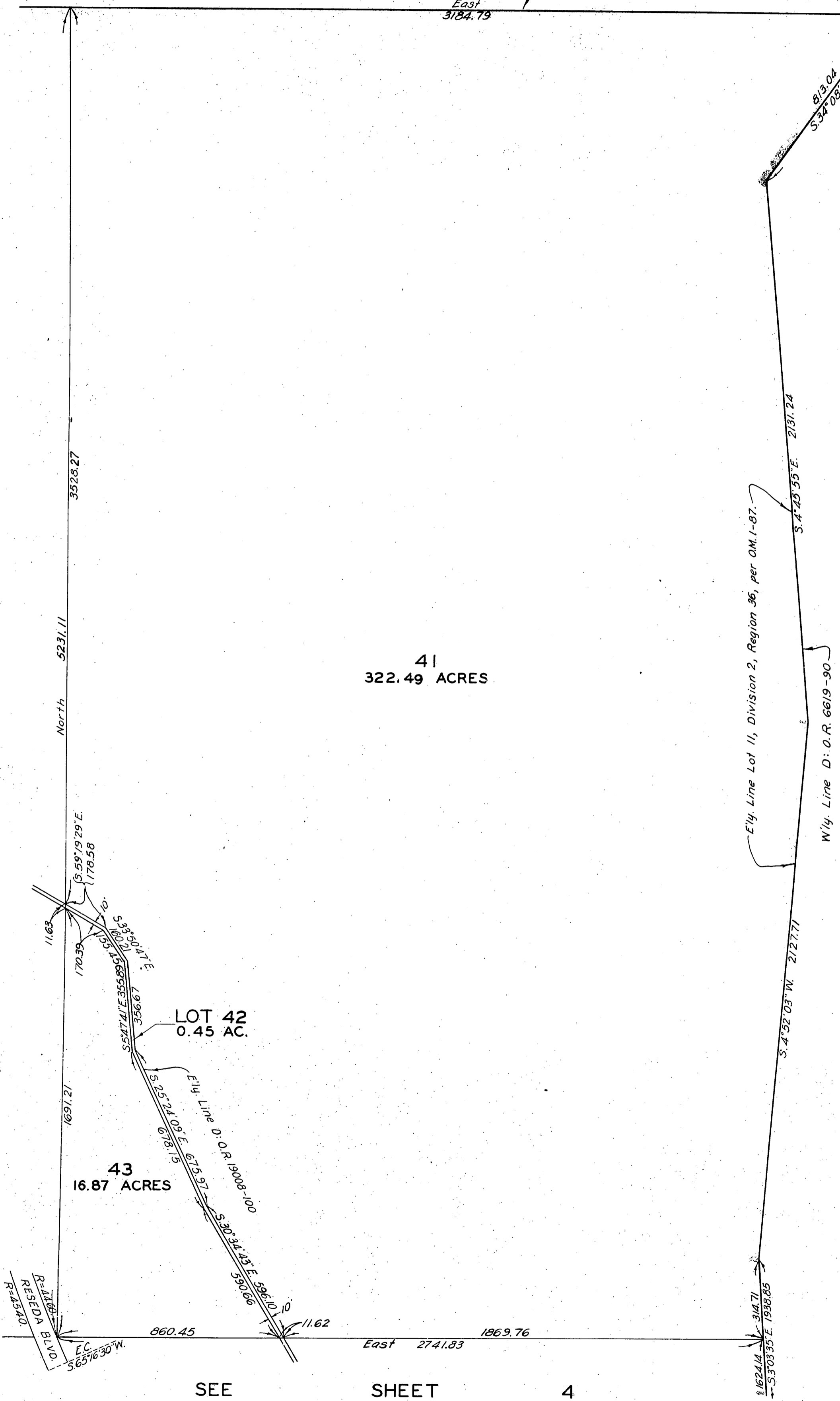
SEE

SHEET

4



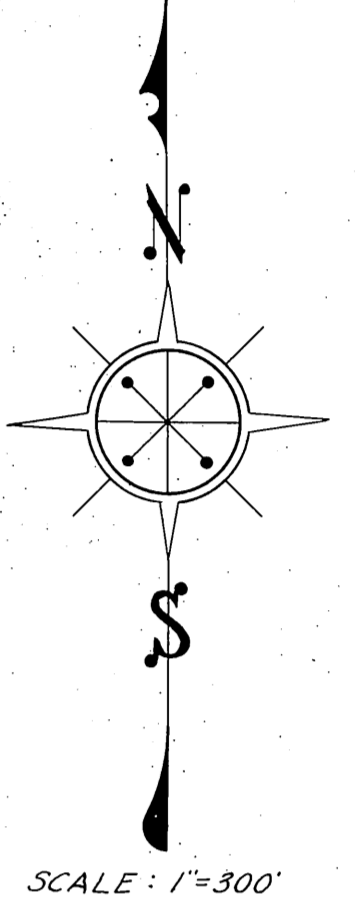
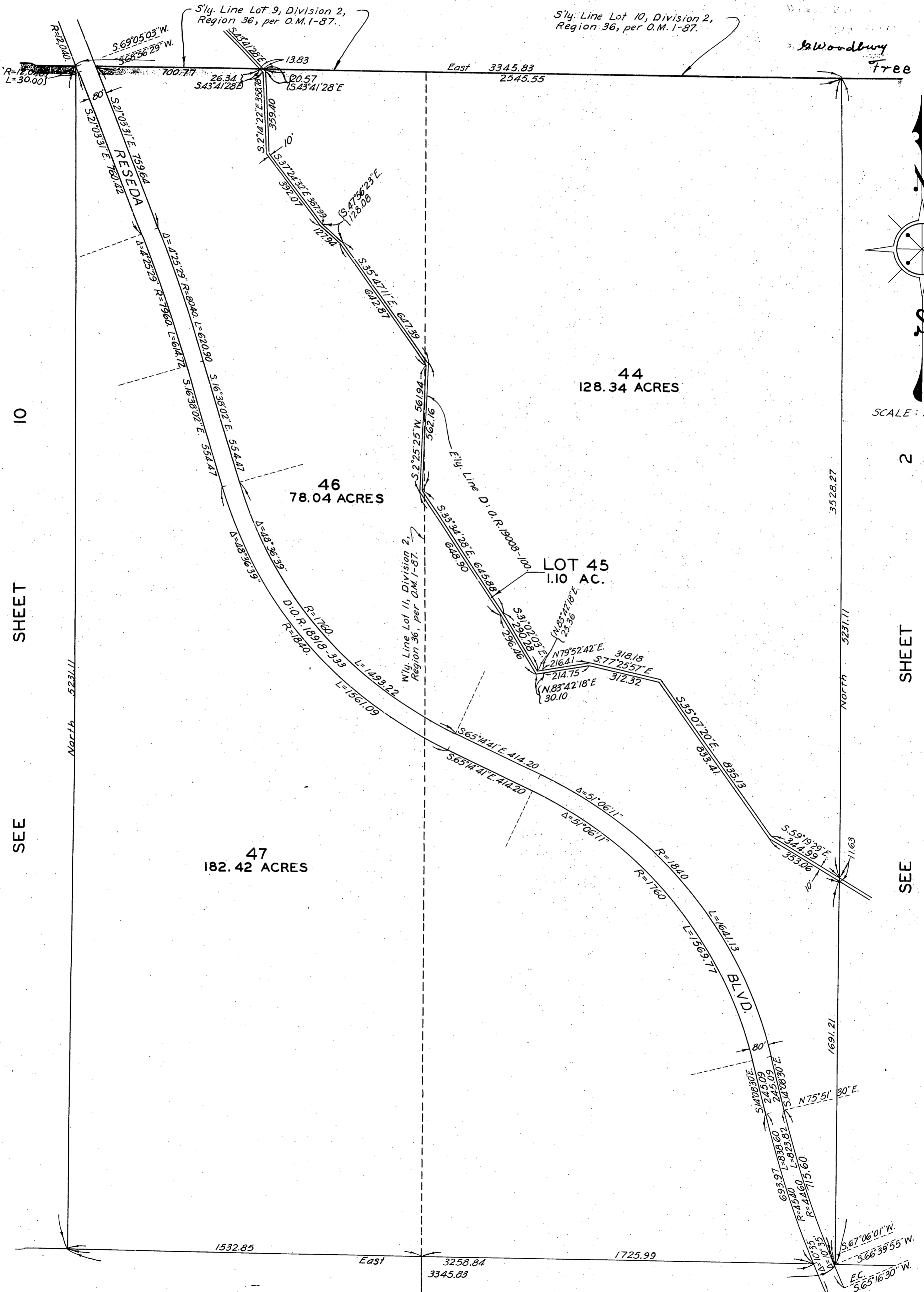
SCALE: 1" = 300'



# OFFICIAL MAP OF THE COUNTY OF LOS ANGELES REGION 36

## DIVISION 2

RECORDED  
MAY 14 1948  
57 2 PM  
IN BOOK 4  
OFFICIAL 21  
5



SEE SHEET 10

SEE SHEET 2

SEE SHEET 10

SEE SHEET 10

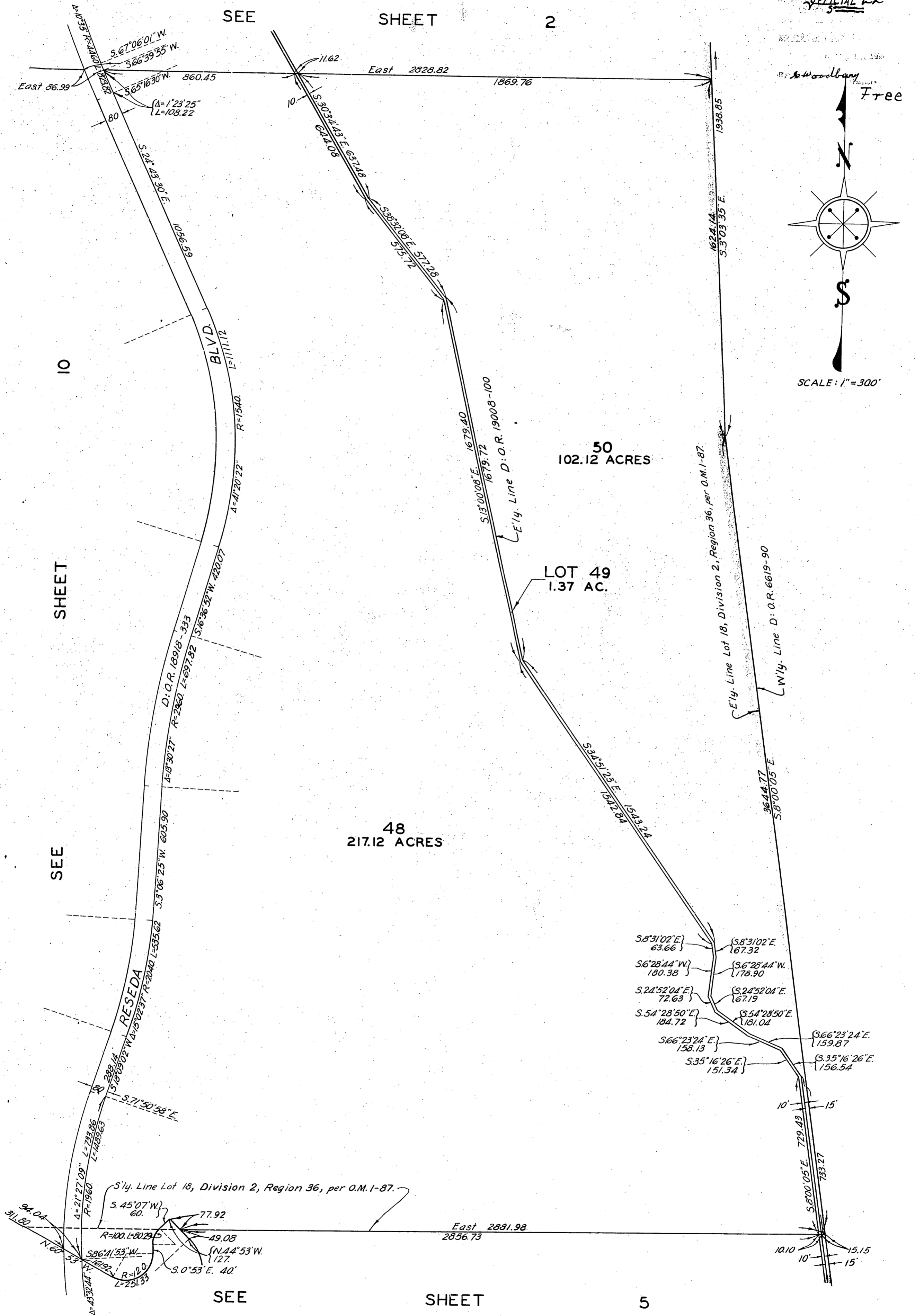
SEE SHEET 10

# OFFICIAL MAP OF THE COUNTY OF LOS ANGELES REGION 36

DIVISION 2

RECORDED  
MAY 14 1948  
5 2 PM  
OFFICIAL 22

SEE SHEET 2

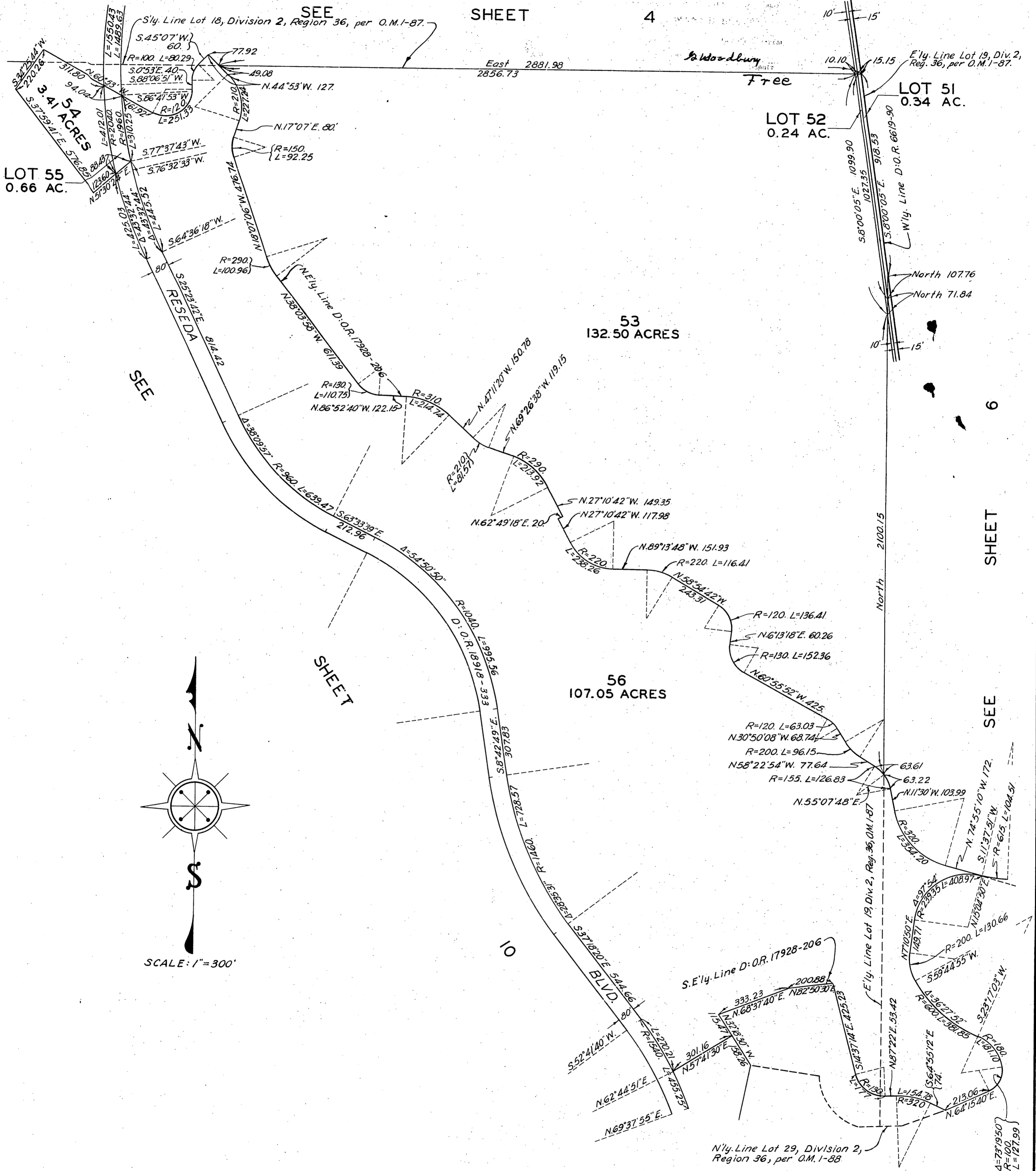


# OFFICIAL MAP OF THE COUNTY OF LOS ANGELES REGION 36

DIVISION 2

2762

RECORDED  
MAY 14, 1948  
57-2 PM  
4  
OFFICIAL 23



SHEET 4

4

LOT 51  
0.34 AC.

LOT 52  
0.24 AC.

LOT 55  
0.66 AC.

53  
132.50 ACRES

56  
107.05 ACRES

6

SHEET

SEE

SEE SHEET 6

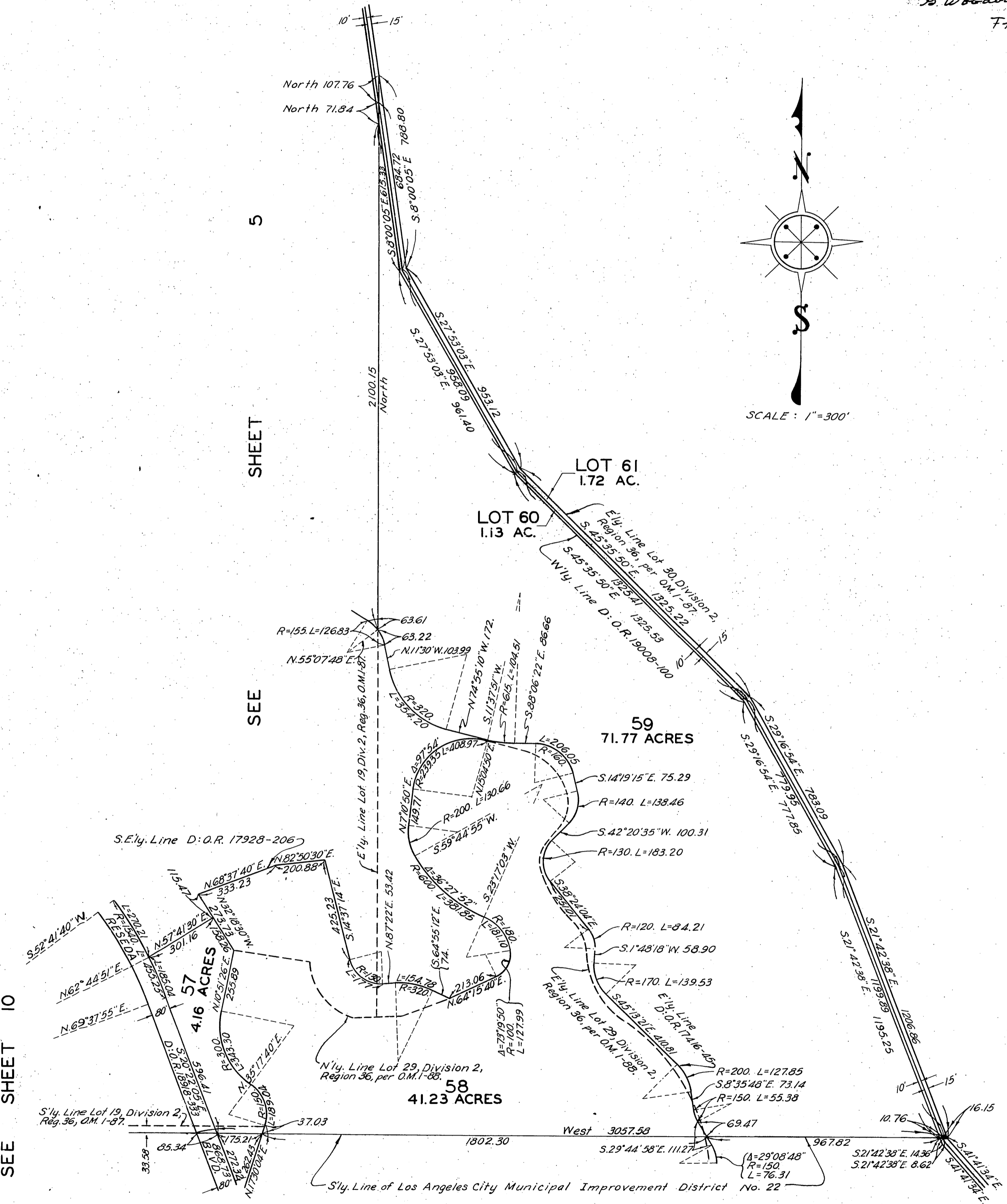
# OFFICIAL MAP OF THE COUNTY OF LOS ANGELES

## REGION 36

### DIVISION 2

May 14 1948  
57-2 PM  
OFFICIAL 24  
4

S. Woodbury  
Free



SEE SHEET 10

SEE SHEET 5

SEE SHEET 10

SEE SHEET 8      SEE SHEET 7

# OFFICIAL MAP OF THE COUNTY OF LOS ANGELES REGION 36

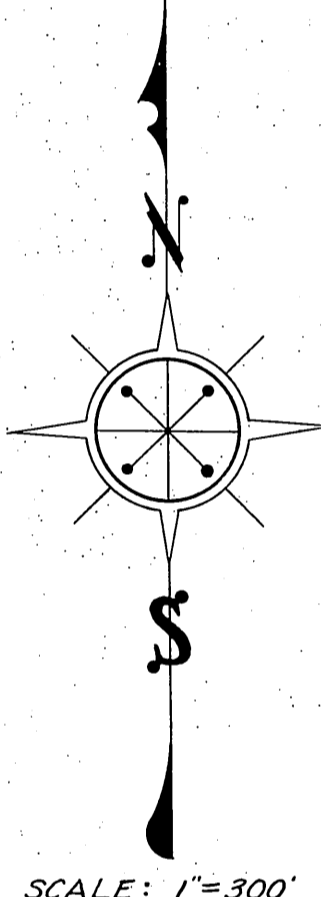
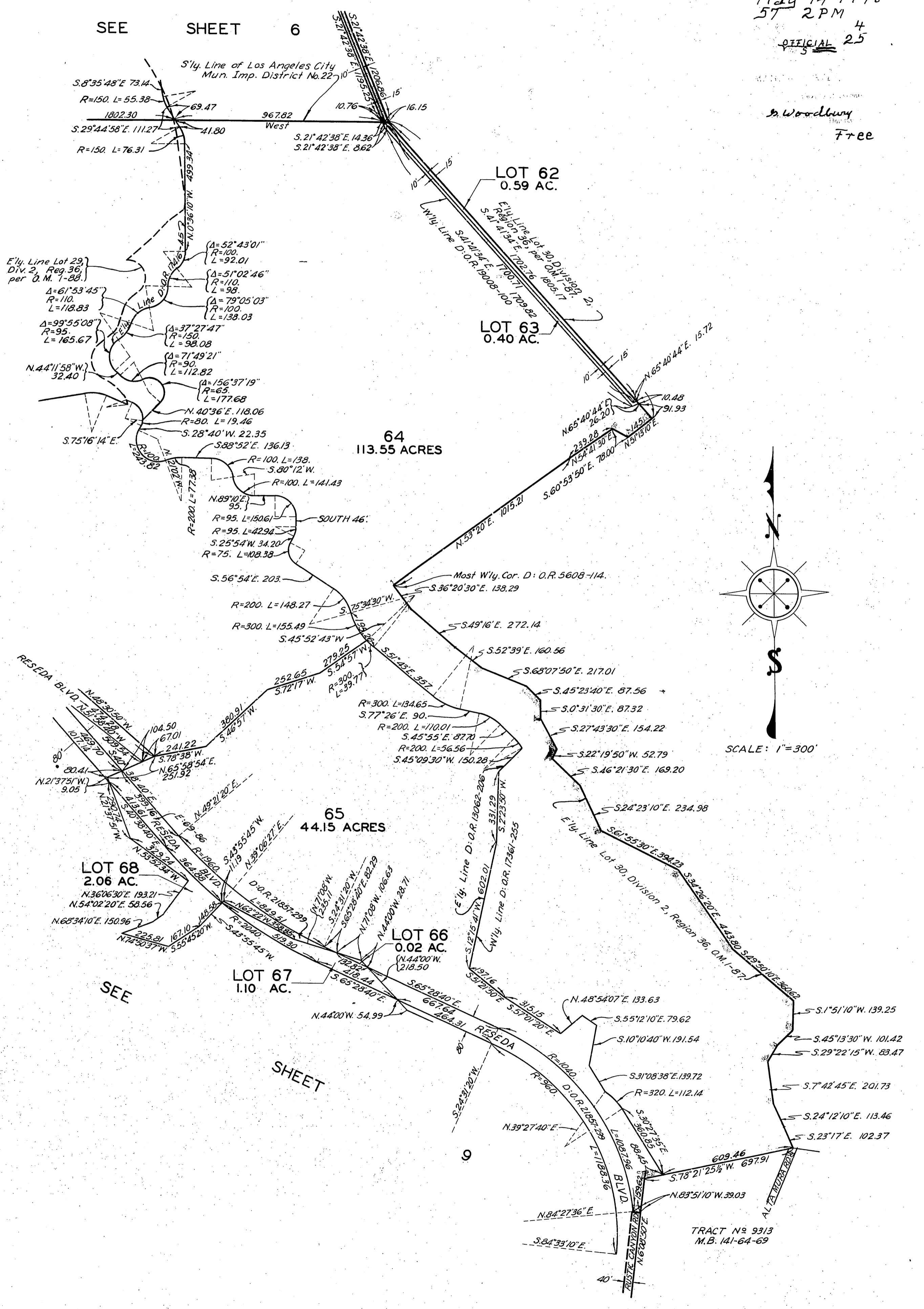
## DIVISION 2

May 14 1948  
5 2 P M

OFFICIAL 25  
3

W. Woodbury  
Free

SEE SHEET 6  
8  
SHEET  
SEE



TRACT No 9313  
M.B. 141-64-69

# OFFICIAL MAP OF THE COUNTY OF LOS ANGELES REGION 36

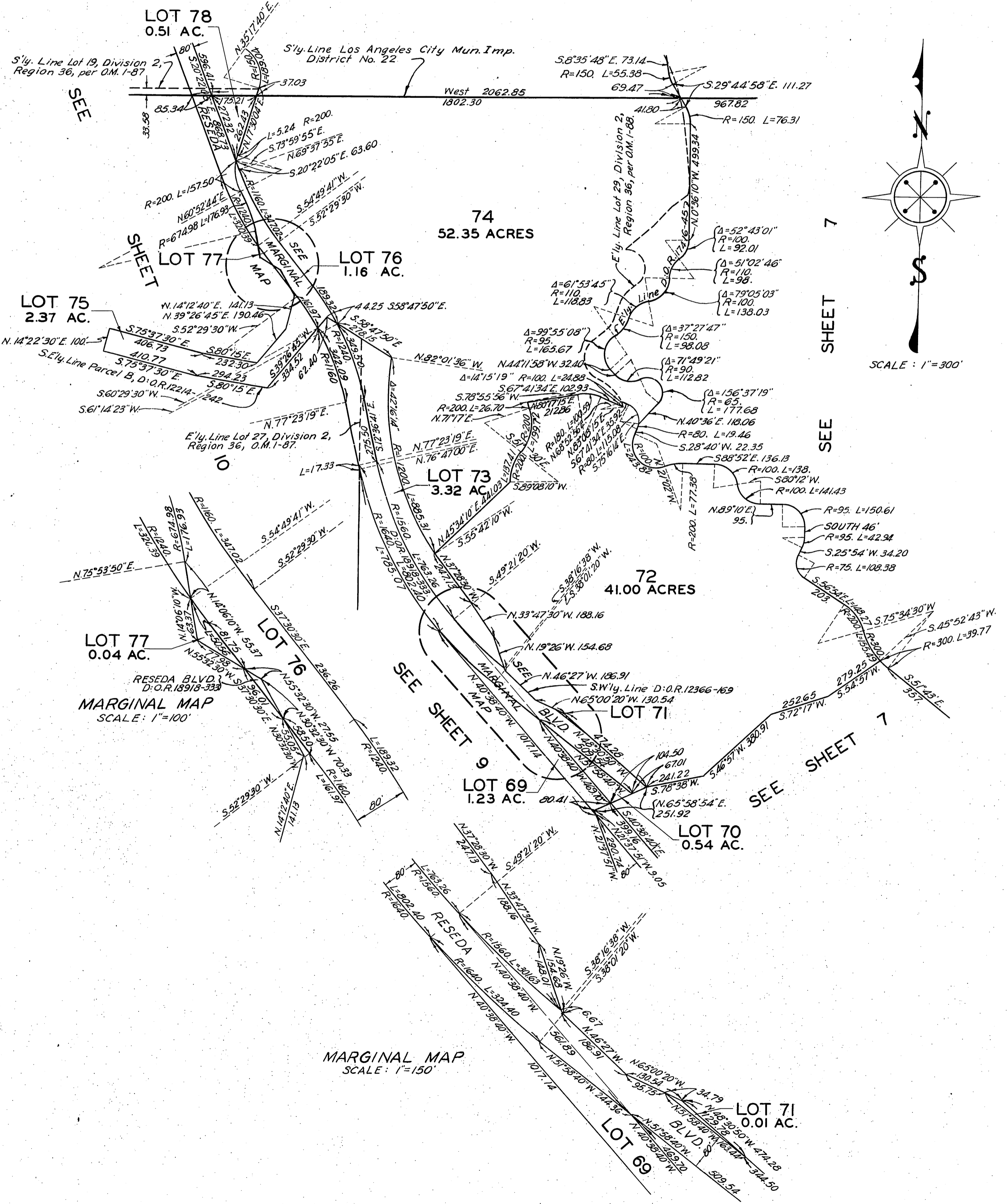
## DIVISION 2

May 14 1948  
57 2 P.M.

OFFICIAL 26

B. Woodbury  
Free

SEE SHEET 6



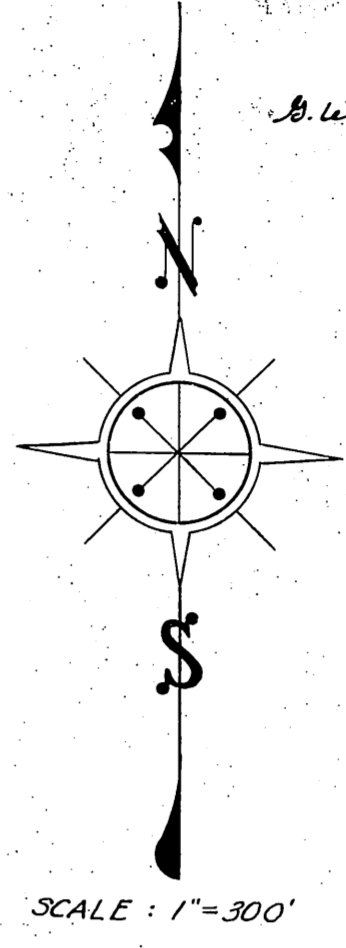


# OFFICIAL MAP OF THE COUNTY OF LOS ANGELES REGION 36

## DIVISION 2

May 14, 1948  
5:22 P.M.  
OFFICIAL 27

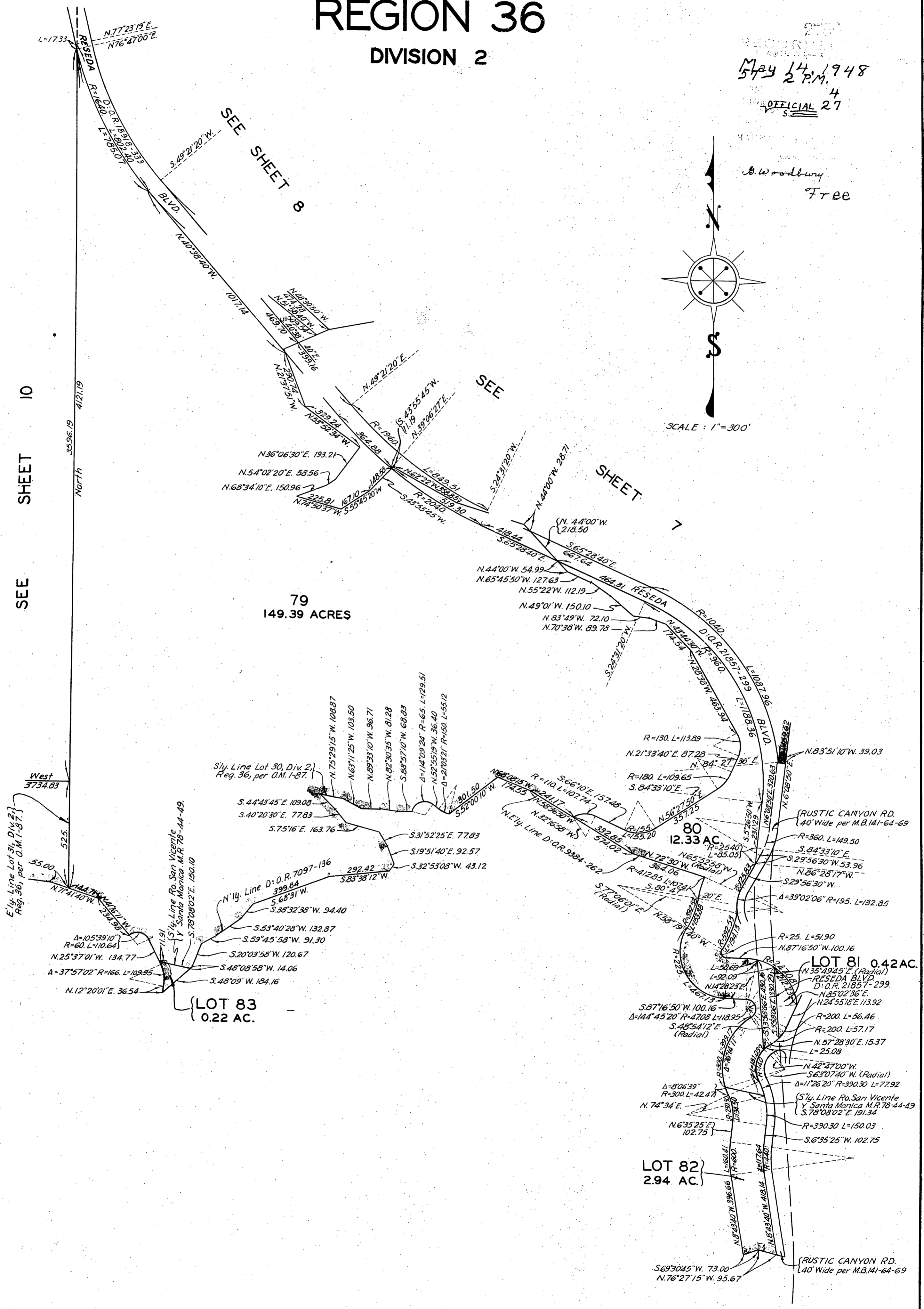
B. Woodbury  
Free



SEE SHEET 10

SEE SHEET 8

SEE SHEET 7



79  
149.39 ACRES

80  
12.33 AC

LOT 81  
0.42 AC.

LOT 82  
2.94 AC.

Ely. Line Lot 31, Div. 2,  
Reg. 36, per O.M. 1-87.

Sly. Line Ro. San Vicente  
Y Santa Monica M.R. 78-44-49.

Sly. Line Lot 30, Div. 2,  
Reg. 36, per O.M. 1-87.

Sly. Line Ro. San Vicente  
Y Santa Monica M.R. 78-44-49

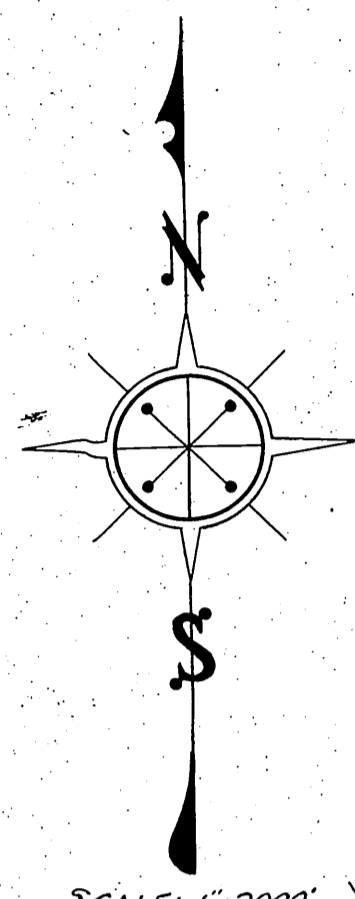
(RUSTIC CANYON RD.  
40' Wide per M.B. 141-64-69

# OFFICIAL MAP OF THE COUNTY OF LOS ANGELES

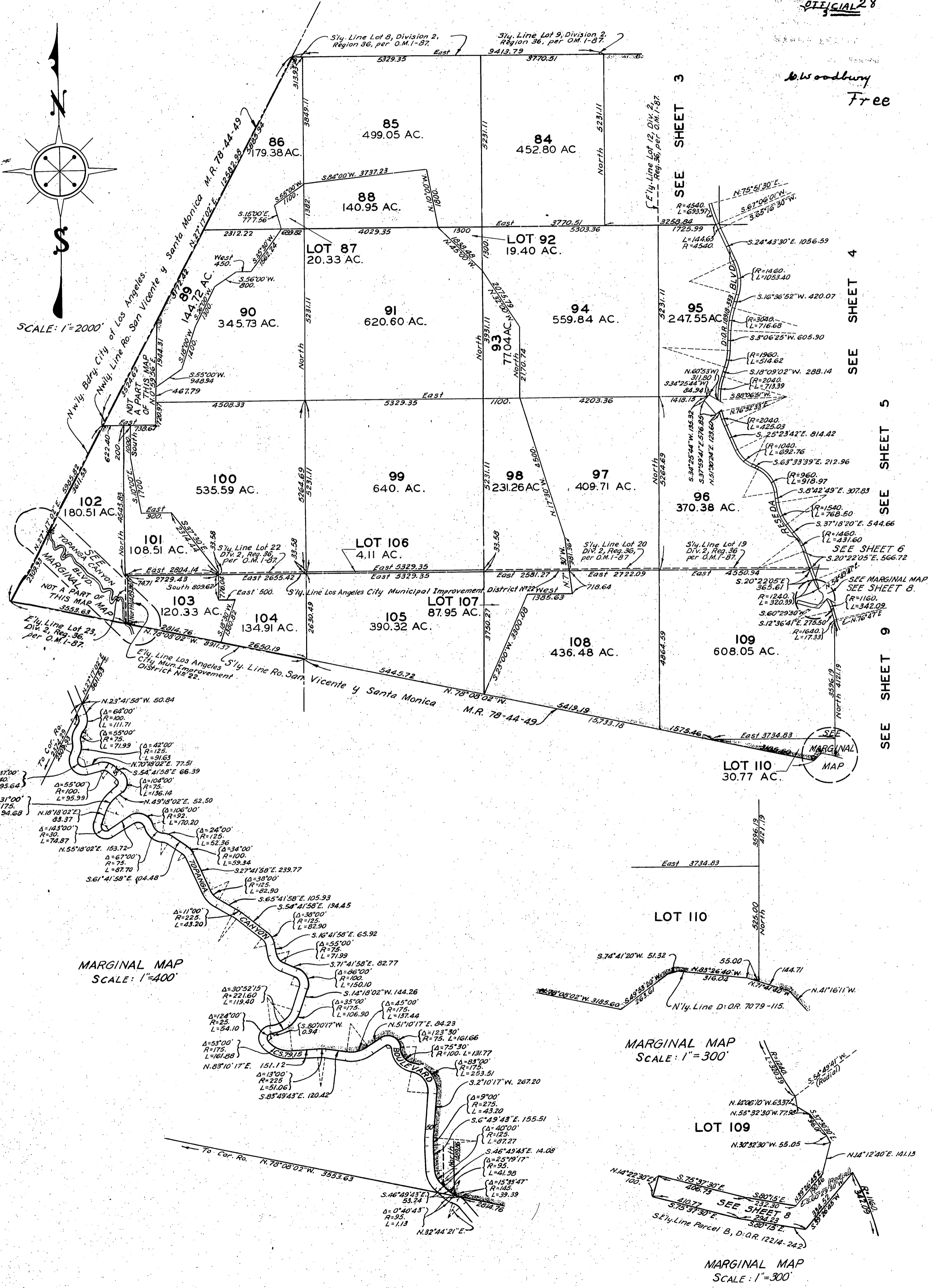
## REGION 36

### DIVISION 2

2701  
RECORDED  
MAY 14 1948  
5 2 PM  
4  
OFFICIAL 28



SCALE: 1"=2000'



W. Woodbury  
Free

SEE SHEET 3

SEE SHEET 4

SEE SHEET 5

SEE SHEET 6

SEE SHEET 9

MARGINAL MAP  
SCALE: 1"=400'

MARGINAL MAP  
SCALE: 1"=300'

MARGINAL MAP  
SCALE: 1"=300'

SEE MARGINAL MAP  
SEE SHEET 8

SEE SHEET 8