

PROPERTY OF
SOUTHERN CALIFORNIA EDISON COMPANY

MAP NO. 13

SHEET 1 OF 5 SHEETS

SCALE 1 INCH = 200 FT.

In the City of Los Angeles

Being a subdivision of a portion of Lots 14, 15 and 38 in Hansen Heights, recorded in book 13 pages 142 and 143 of Maps, a portion of Lots 18, 29 and 30 of the West Portion of the Tujunga Ranch, recorded in book 29 pages 51 and 52 of Miscellaneous Records, a portion of the 10 acre tract marked "Warner" on said last mentioned map; a portion of the unnamed Road (now vacated as per book 107 page 195 of Miscellaneous Records) the westerly line of which is the easterly line of said Lot 30 as shown on said last mentioned map, a portion of Lots 15, 16 and 17 of Tract No. 102, recorded in book 13 page 57 of Maps, a portion of Blocks 14, 26, 27, 40, 41 and 59 of the Maclay Rancho Ex Mission of San Fernando, recorded in book 37 pages 5 et seq. of Miscellaneous Records, a portion of Lots 109, 110, 111, 112, 116, 117, 119, 120, 121, 122 and 141 and all of Lots 113, 114, 115 and 118 of Tract No. 8658, recorded in book 114 pages 5 and 6 of Maps, all records of the County of Los Angeles, State of California.

Los Angeles

California

August 1948

C. E. Arnold

County Surveyor

The bearing, N 71° 05' 35" W, of the center line of the east tower line of the Big Creek Transmission Line marked "Reference Line" as shown on Record of Survey book 31 page 24 was taken as the basis of bearings shown on this map.

This map was prepared from a survey made under the supervision of Geo. H. Starbuck, Licensed Surveyor and Engineer for Southern California Edison Company, during Aug. 1938 and May 1939.

We hereby certify that on the 24th day of August, 1948, the within map was approved and adopted as an official map by the Board of Supervisors of the County of Los Angeles by resolution duly adopted as follows, to wit:

WHEREAS, The Board of Supervisors of the County of Los Angeles, State of California, pursuant to the provisions of Section 3658a of the Political Code of the State of California, did, by an order adopted on the 7th day of December 1931, direct the preparation by the County Surveyor of an official map of portions of the property of Southern California Edison Company

NOW THEREFORE, be it resolved that said map entitled "Property of Southern California Edison Company Map No. 13" be and the same is hereby approved and adopted.

The foregoing resolution was, on the 24th day of August, 1948, adopted by the Board of Supervisors of the County of Los Angeles, State of California.

Attest: Earl Lippold
County Clerk and ex-officio Clerk of
the Board of Supervisors of the
County of Los Angeles

By Mrs. Robinson
Deputy

Raymond W. Daily
Chairman of the Board of Supervisors
Supervisor 4th District

William A. Smith
Supervisor 1st District

Lamar H. Hanch
Supervisor 2nd District

John Brown Ford
Supervisor 3rd District

Roger W. Kump
Supervisor 5th District

Earl Lippold
County Clerk and ex-officio Clerk
of the Board of Supervisors
of the County of Los Angeles.

By Mrs. Robinson
Deputy

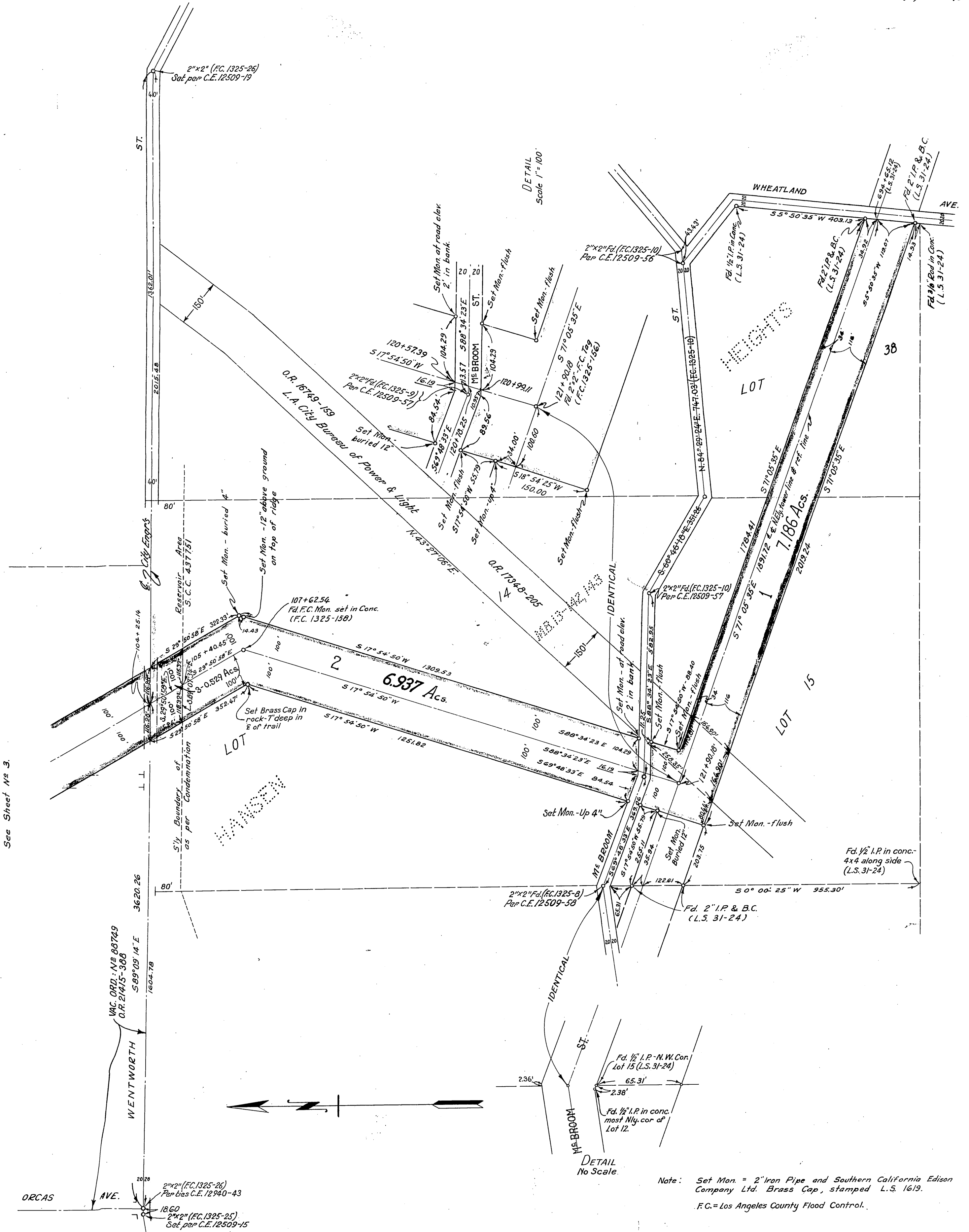
29
RECORDED
BY REQUEST OF OWNER
Sept 8-1948
47 PG. 3 P.
IN BOOK 4
AT PAGE 29
OFFICIAL MAP RECORDS
LOS ANGELES COUNTY, CALIF.
M. R. BEATY
County Recorder
M. Dillon
Free 2

PROPERTY OF SOUTHERN CALIFORNIA EDISON COMPANY

MAP NO. 13
SHEET 2 OF 5 SHEETS
SCALE 1 INCH = 200 FT.

30

RECORDED
BY COUNTY CLERK
Sept 8-1948
47:39
IN BOOK 4
AT PAGE 30
OFFICIAL MAP
LOS ANGELES COUNTY, CALIF.
WALTER BRATTE,
County Recorder
M. Deem
Free 8



See Sheet No. 3.

Note: Set Mon. = 2" Iron Pipe and Southern California Edison Company Ltd. Brass Cap, stamped L.S. 1619.
F.C. = Los Angeles County Flood Control.

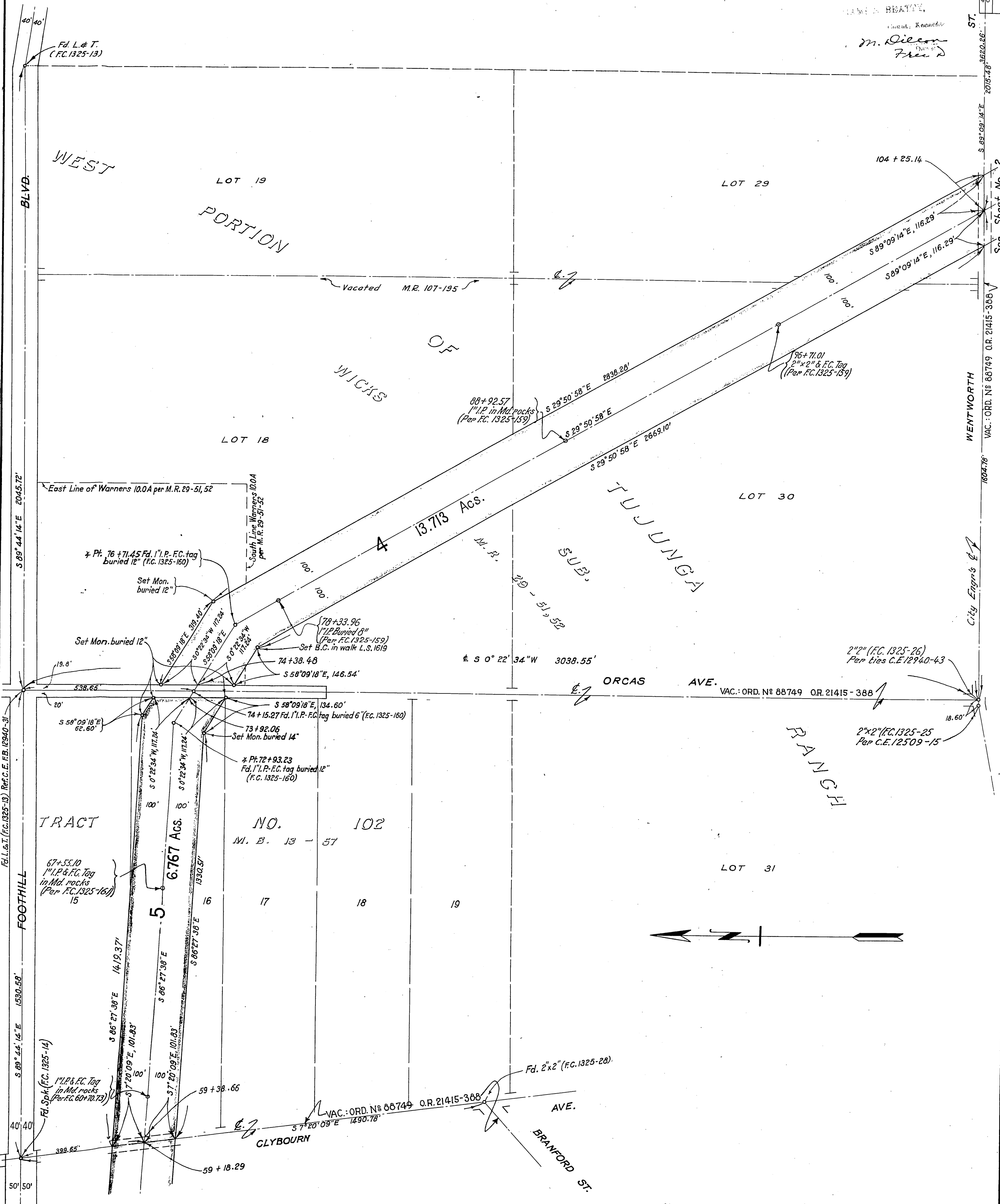
PROPERTY OF
SOUTHERN CALIFORNIA EDISON COMPANY

MAP NO. 13
 SHEET 3 OF 5 SHEETS
 SCALE 1 INCH = 200 FT.

31

Fd. 2"x2" (F.C. 1325-26)
 Set per C.E. 12509-19

RECORDED
 Sept 8-1948
 47 3pm
 BOOK 4
 PAGE 31
 OFFICIAL RECORDS
 COUNTY OF LOS ANGELES
 JAMES BEATTY,
 County Recorder
 M. Olson
 Free



See Sheet No. 4

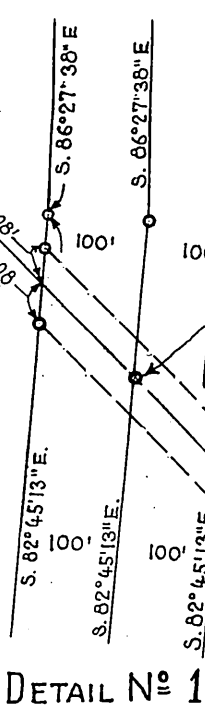
Note: Set Mon.=2" Iron Pipe and Southern California Edison Company Ltd. Brass Cap stamped L.S.1619
 F.C.= Los Angeles County Flood Control.

PROPERTY OF SOUTHERN CALIFORNIA EDISON COMPANY

32

MAP NO. 13
SHEET 4 OF 5 SHEETS
SCALE 1 INCH = 200 FT.

See Sheet No. 3



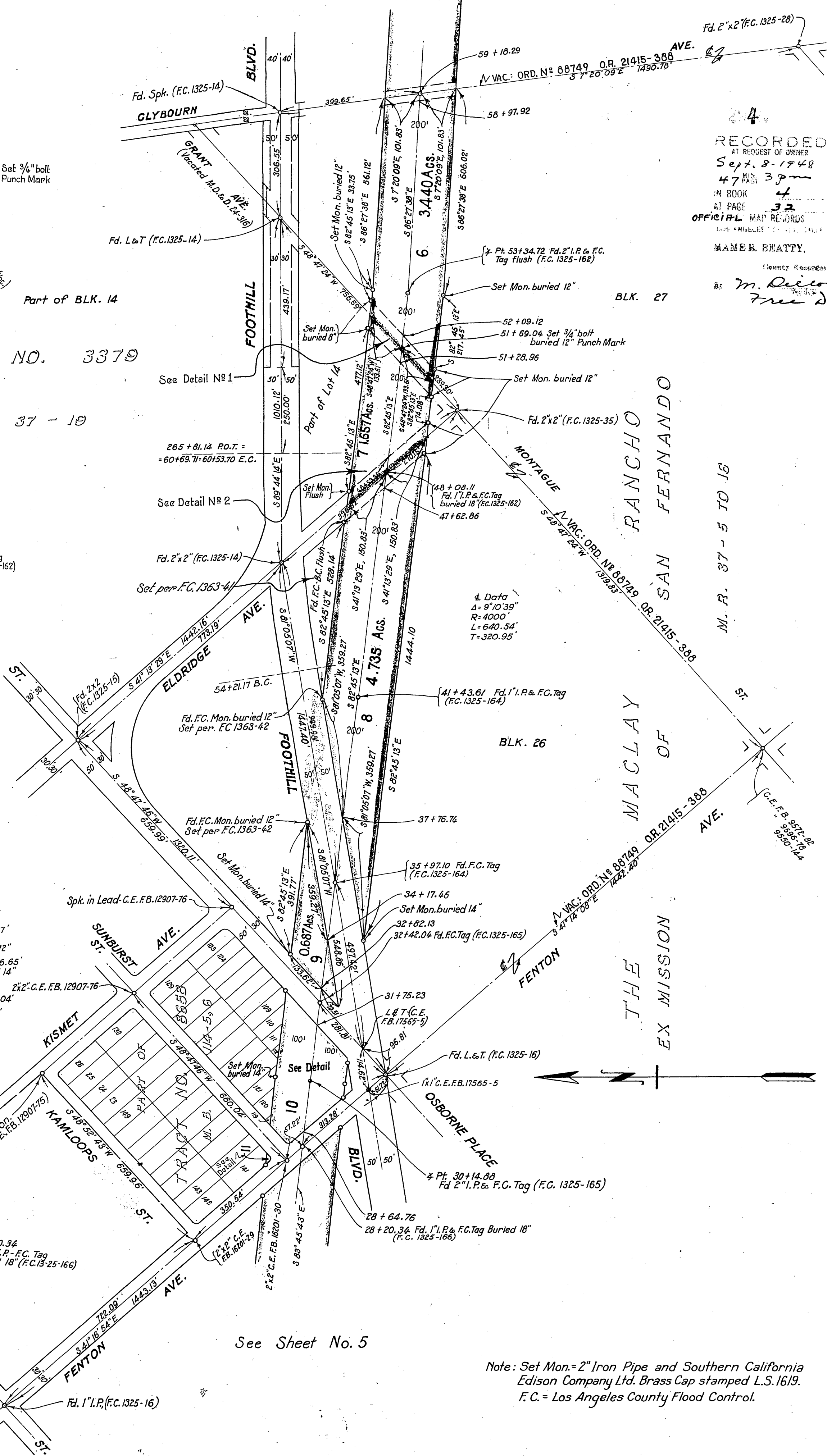
Part of BLK. 14

TRACT NO. 3379

M. B. 37 - 19

DETAIL No 2

OSBORNE ST.



See Sheet No. 5

4
RECORDED
AT REQUEST OF OWNER
Sept. 8-1948
47 PAGES
IN BOOK 4
AT PAGE 32
OFFICIAL MAP RECORDS
MABEL BEATTY,
County Recorder
M. Olson
Free 2

M. R. 37 - 5 TO 16

Note: Set Mon. = 2" Iron Pipe and Southern California Edison Company Ltd. Brass Cap stamped L.S. 1619.
F.C. = Los Angeles County Flood Control.

PROPERTY OF SOUTHERN CALIFORNIA EDISON COMPANY

MAP NO. 13

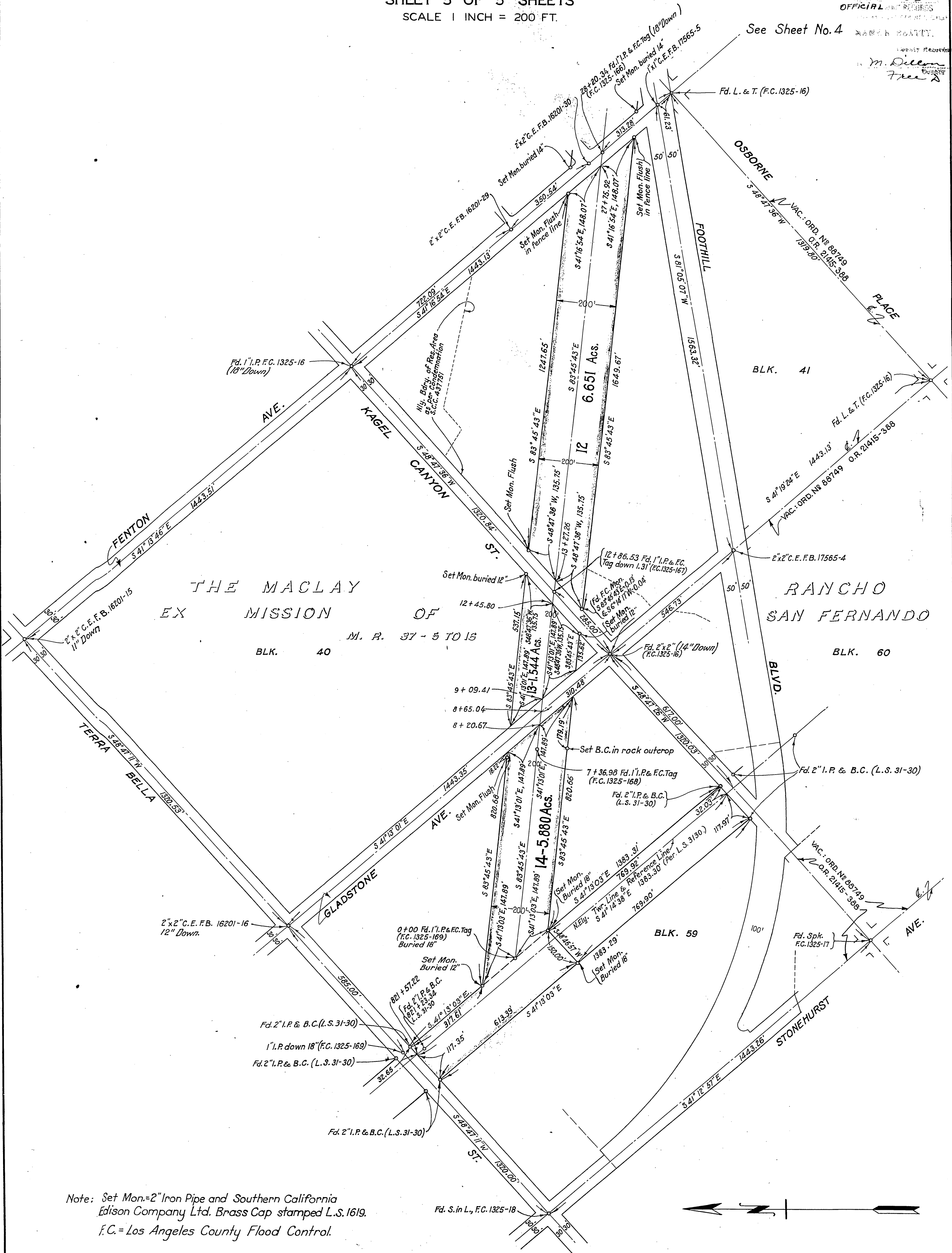
SHEET 5 OF 5 SHEETS

SCALE 1 INCH = 200 FT.

33

RECORDED
Sept. 8 - 1948
47 3p
OFFICIAL RECORDS

See Sheet No. 4



Note: Set Mon.=2" Iron Pipe and Southern California Edison Company Ltd. Brass Cap stamped L.S. 1619.
F.C.= Los Angeles County Flood Control.

Fd. S. in L., F.C. 1325-18

