

# OFFICIAL MAP

OF THAT PORTION OF THE CITY OF PASADENA CONSISTING OF ALL THE MESA ANNEX AS PER ANNEXATION OF MAY 1, 1952 AND ALL OF THE NEW YORK ANNEX AS PER ANNEXATION OF SEPTEMBER 5, 1947 IN THE COUNTY OF LOS ANGELES, STATE OF CALIFORNIA BEING A PORTION OF THE SANTA ANITA RANCHO RECORDED IN PATENT BOOK 1 PAGES 97 AND 98 IN THE OFFICE OF THE COUNTY RECORDER OF LOS ANGELES COUNTY.

SHOWING ALL THE LOTS, PIECES OR PARCELS OF LAND IN SAID AREA BY SEPARATE NUMBER, BEING NUMBERED CONSECUTIVELY FROM 1 TO 102 FOR THE PURPOSE OF THE IDENTIFICATION OF SAID LOTS, PIECES OR PARCELS BY REFERENCE TO SAID NUMBERS AS AUTHORIZED BY SECTION 11657 OF CHAPTER 3 PART 2 OF DIVISION 4 OF THE BUSINESS AND PROFESSIONAL CODE SECTIONS 11650 TO 11658 INCLUSIVE, ALSO SHOWING ALL THE OPEN PUBLIC AVENUES, ROADS, STREETS, DRIVES AND BOULEVARDS.

NOVEMBER, 1953

SCALE 1" = 60'

A Resolution of the Board of Directors of the City of Pasadena Approving an "Official Map" for Mesa Annex and New York Annex in the City of Pasadena Whereas there are a number of parcels of land for which no map appears of record and the City Engineer has been directed to make a map of said property.

Now therefore by resolution duly made and adopted by the Board of Directors of the City of Pasadena at a regular meeting thereof being Resolution No. 7968 adopted by said Board dated 12-8-53 it is hereby ordered that the attached map consisting of six (6) sheets be and the same hereby is approved and adopted as the official map of Mesa Annex and of New York Annex in accordance with the provisions of Chapter 3, part 2, of Division 4 of the Business and Professions Code Sections 11650 to 11658 inclusive, for the uses and purposes therein named.

The City Clerk of the City of Pasadena is hereby directed to endorse on the face of said map a copy of this resolution attested by the official seal of the City of Pasadena.

I, Clara Belle MacLellan, City Clerk of the City of Pasadena, hereby certify that the foregoing certificate is signed by a majority of the members of the Board of Directors of the City of Pasadena and the Chairman as presiding officer of said Board.

In witness whereof I have hereunto set my hand and affixed the official seal of the City of Pasadena this 8 day of Dec. 1953.

*Clara Belle MacLellan*  
Clerk of the City of Pasadena

I, Douglas C. Mackenzie hereby certify that I am the City Engineer of the City of Pasadena, County of Los Angeles, State of California, and that this map consisting of six (6) sheets, was made under my direction on November 1953, in accordance with the provisions of Chapter 3, part 2 of Division 4 of the Business and Professions Code, Sections 11650 to 11658 inclusive of the State of California, and under the direction and with the approval of the Board of Directors of said City of Pasadena.

*Douglas C. Mackenzie*  
City Engineer, City of Pasadena

Chairman of Board of Directors

*Clara A. Wmarr*  
Date Dec 8, 1953

*Warren M. Down*

*M. S. Brennan*

*A. Bay Benedict*

*John W. Mills*

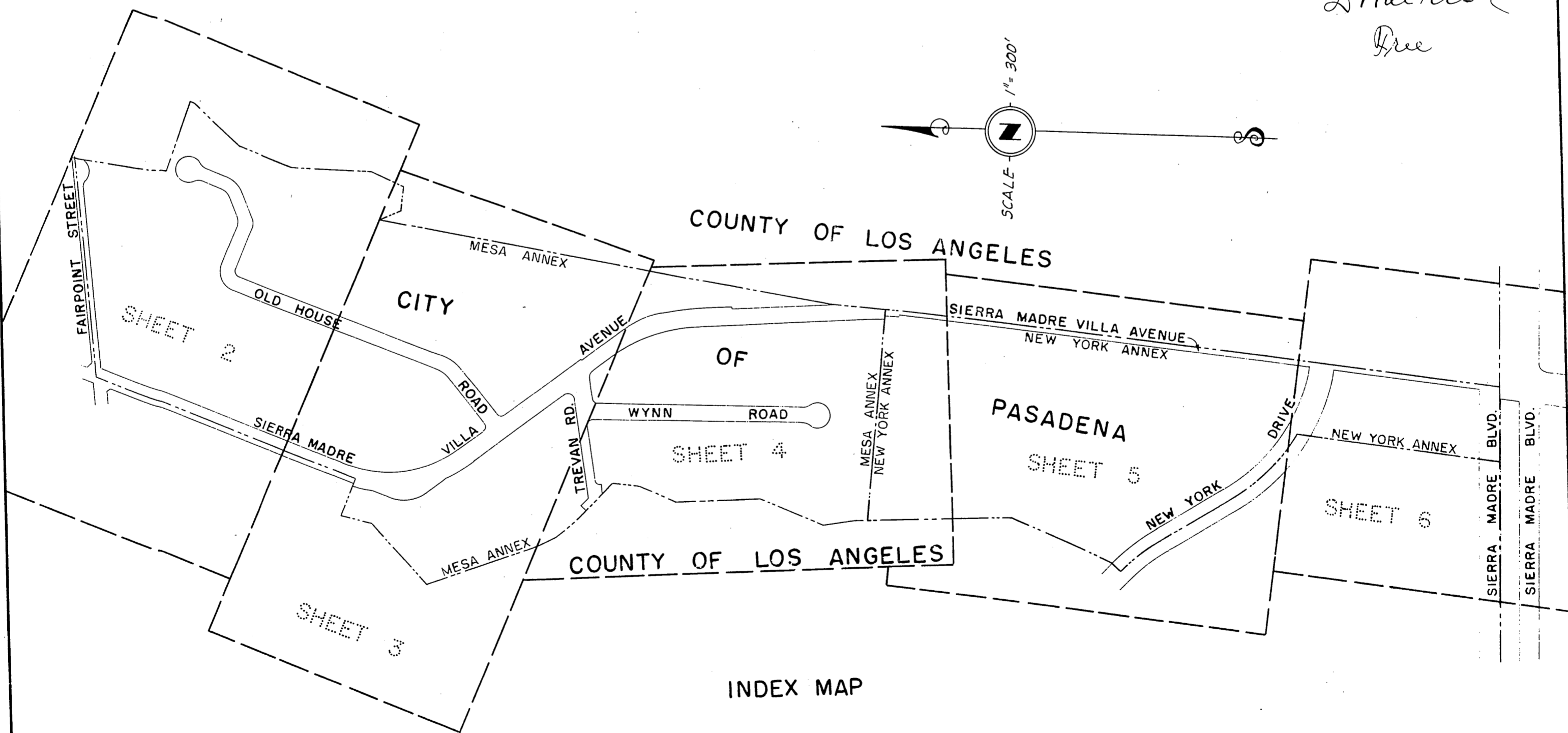
*Allen E. Abernethy*

*Ray E. Woods*  
Board Members

The bearing of the Center Line of Sierra Madre Villa Avenue N. 1° 59' 40" W. as shown on Los Angeles County Surveyor's Map No. B 541-2 was taken as the basis of bearings for this map.

This map was compiled solely from deeds of record, Annexation Boundary Descriptions and Los Angeles County Surveyor's Maps Numbered B 846-1 and B 541-2, and as such does not represent closed traverses of individual lots.

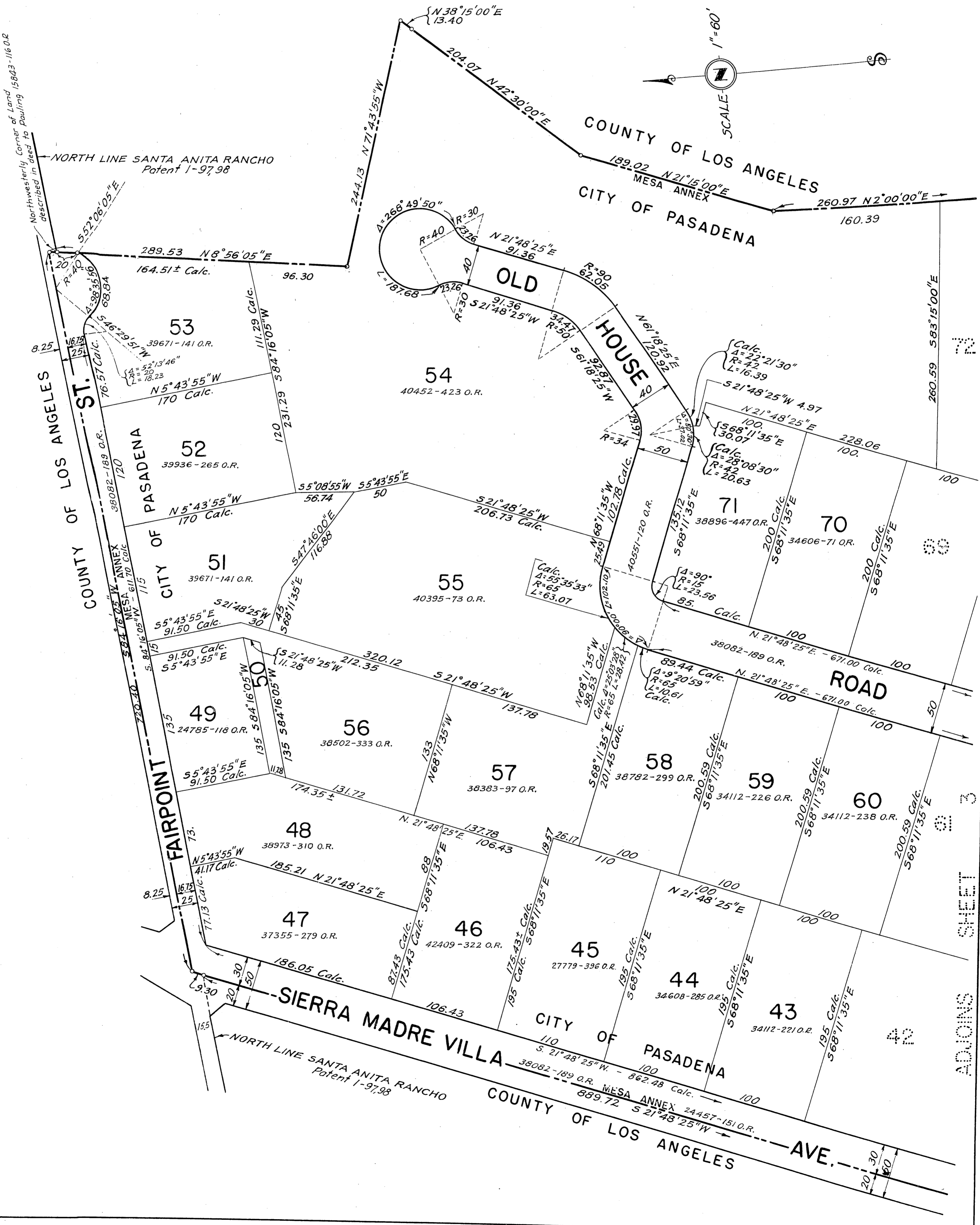
Filed Dec 8 1953  
30 1 p.m.  
4  
34  
Official  
A. S.  
*S. Masters*  
Dre  
City of Pasadena



OFFICIAL MAP  
OF A PORTION OF CITY OF PASADENA, COUNTY  
OF LOS ANGELES, STATE OF CALIFORNIA

Filed Dec. 8, 1953  
30  
4  
35  
official  
A S  
City of Pasadena  
Structural  
Free

Northwesterly Corner of Land described in deed to Pauling 15843-116.02



72

70

60

50

40

30

20

10

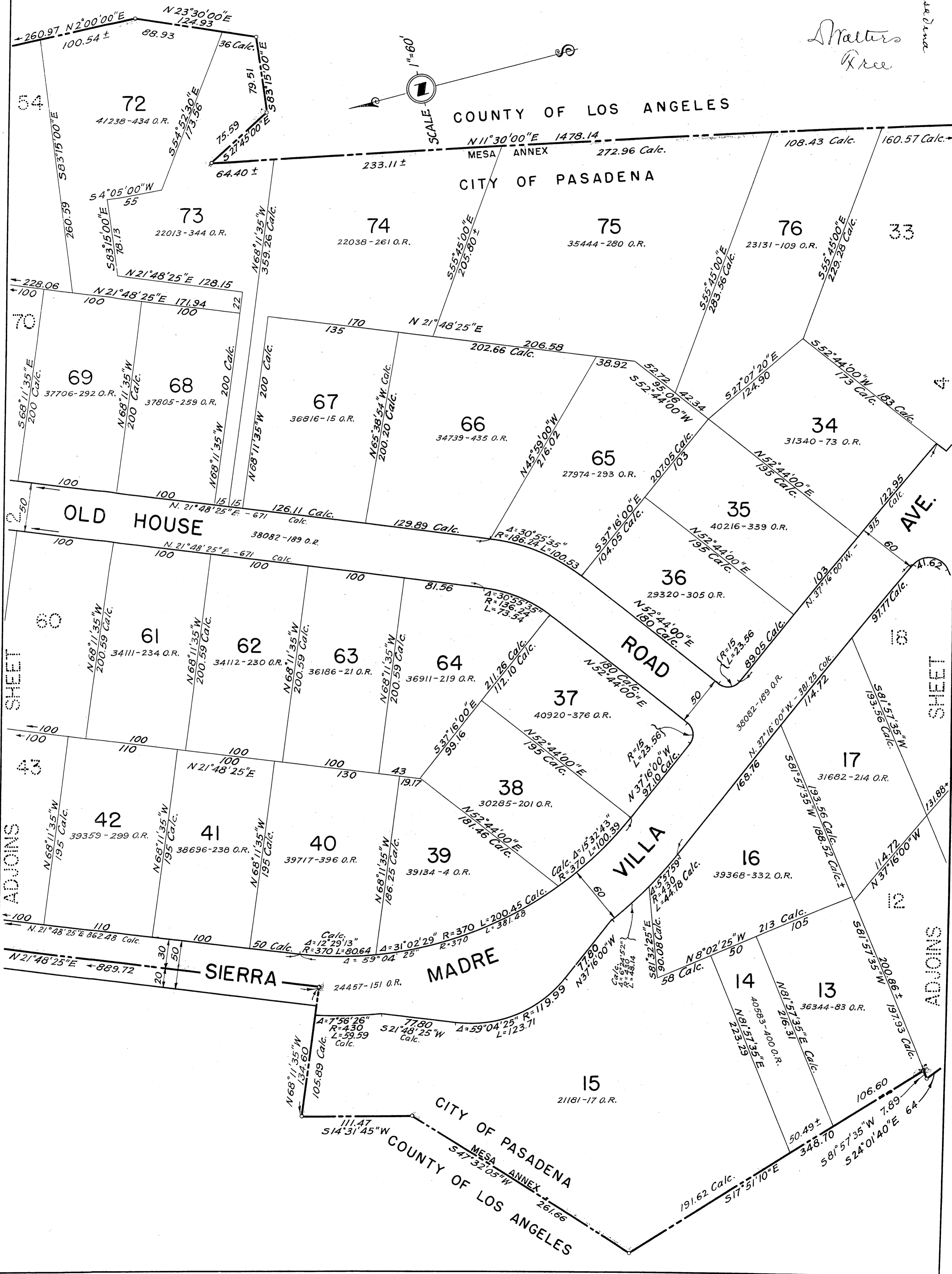
ADJOINS SHEET

OFFICIAL MAP  
OF A PORTION OF CITY OF PASADENA, COUNTY  
OF LOS ANGELES, STATE OF CALIFORNIA

Filed Dec. 8, 1953  
30 1 p.m.  
Official  
46  
11 5

City of Pasadena

Matters  
Free



OFFICIAL MAP  
OF A PORTION OF CITY OF PASADENA, COUNTY  
OF LOS ANGELES, STATE OF CALIFORNIA

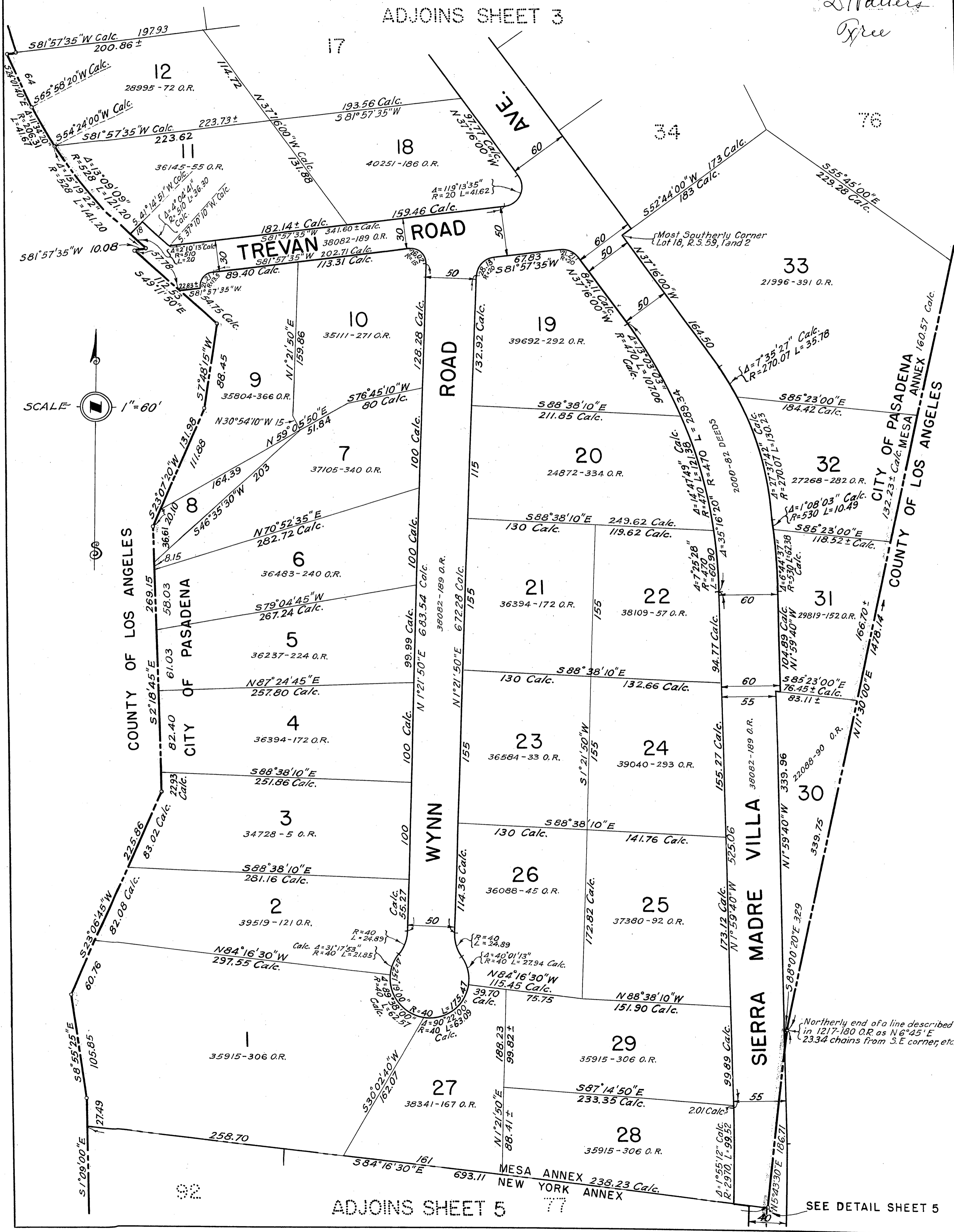
Filed Dec. 8, 1953  
30 / 1 P.M.  
4  
officials 37

City of Pasadena

Shatters  
Oxree

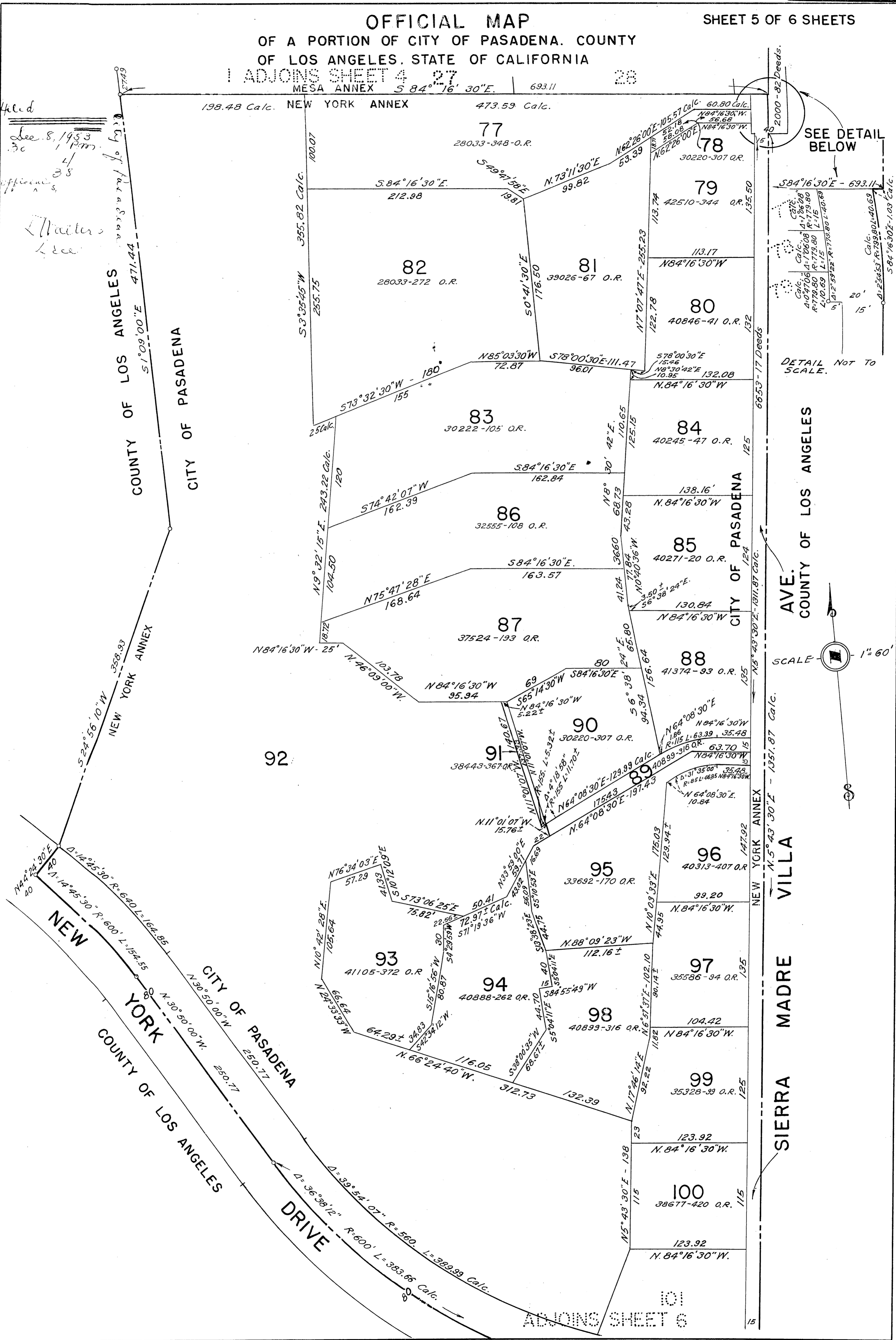
ADJOINS SHEET 3

ADJOINS SHEET 5



SEE DETAIL SHEET 5

OFFICIAL MAP  
OF A PORTION OF CITY OF PASADENA. COUNTY  
OF LOS ANGELES. STATE OF CALIFORNIA  
ADJOINS SHEET 4 27

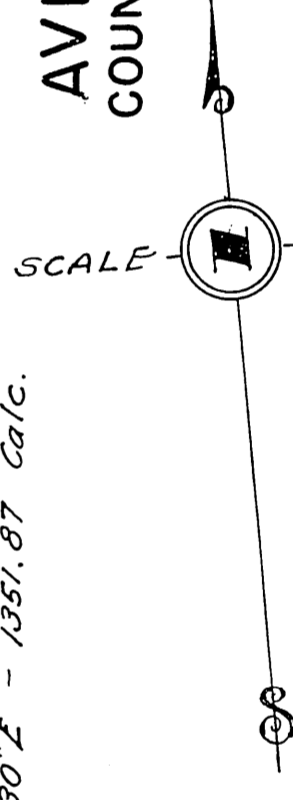


Filed  
See 8, 1953  
Official  
Map  
38  
Waters  
Lee

SEE DETAIL BELOW

DETAIL NOT TO SCALE.

SCALE 1" = 60'



SIERRA MADRE VILLA

AVE. COUNTY OF LOS ANGELES

6653-17 Deeds

2000-82 Deeds

693.11

ADJOINS SHEET 6

OFFICIAL MAP  
OF A PORTION OF CITY OF PASADENA, COUNTY  
OF LOS ANGELES, STATE OF CALIFORNIA

Filed Dec. 8, 1953  
30 1 P.M.  
4  
39  
official  
3  
City of Pasadena  
L. Masters  
4/11

ADJOINS SHEET 5

