

OFFICIAL MAP

SHEET 1 OF 2 SHEETS

4 40

OF PART OF THE CITY OF DOWNEY COUNTY OF LOS ANGELES
Being a survey of lot 17 and a portion of lot 6 of Bixby's subdivision of a portion of the Rancho Los Cerritos per map recorded in book 2 page 234-235 of miscellaneous records of Los Angeles County
Showing certain parcels of land in said area by separate number or letter for the purpose of the identification of said parcels by reference to said numbers or letters as authorized by chapter 3, part 2 of division 4 of the Business and Professions code Sections 11650 to 11658 inclusive, also showing and naming all open roads, streets, and avenues therein.

Filed
Sept 12 1958 Downey
31 4 PM
City of
Official =
Shalters
Rice

RESOLUTION No. 272

A Resolution of the City Council of the City of Downey California adopting an "Official Map" for Lot 17 and a portion of Lot 6 of Bixby's subdivision of a portion of the Rancho Los Cerritos, per map recorded in Book 2, pages 234, 235 of Miscellaneous Records of Los Angeles County.

WHEREAS, there are a number of parcels of land for which no map appears of record, and the City Engineer has been directed to make a map of said property.

Now, THEREFORE, The City Council of the City of Downey does resolve as follows:

SECTION 1. It hereby is ordered that the attached map consisting of two (2) sheets be and the same hereby is approved and adopted as the Official Map of the above described property in accordance with the provisions of Chapter 3, Part 2, of Division 4 of the Business and Professions Code, Sections 11650 to 11658 inclusive, for the uses and purposes therein named.

SECTION 2. The City Clerk of the City of Downey hereby is directed to endorse on the face of said map a copy of this resolution attested by the official seal of the City of Downey.

SECTION 3. The City Clerk shall certify to the adoption of this resolution.

APPROVED AND ADOPTED THIS 14th DAY OF July, 1958

Scott E. Temple
MAYOR

I *Della Doyle* City Clerk of the City of Downey hereby certify that the foregoing certificate is signed by a majority of the members of the City Council of the City of Downey and the Mayor as presiding officer of said body.

In witness thereof I have hereunto set my hand and affixed the official seal of the City of Downey this 14th day of July, 1958

Della Doyle
Clerk of the City of Downey

I Richard G. Barhite hereby certify that I am the City Engineer of the City of Downey, County of Los Angeles, State of California, and that this map consisting of two (2) sheets, was made under my direction July, 1958, in accordance with the provisions of Chapter 3, Part 2 of Division 4 of the Business and Professions Code, Sections 11650 to 11658 inclusive of the State of California, and under the direction and with the approval of the City Council of said City of Downey.

Richard G. Barhite
City Engineer, City of Downey

7-29-58 *Donald C. Simpson R.E. 10595*
By- Donald C. Simpson - Asst City Engr.

Members of City Council

Hollis M. Peasney
James L. Stamp
Erik Pedding
Carroll M. Dunning

COUNTY ENGINEERS COPY

INDEX 32 D3

OFFICIAL MAP

SHEET 2 OF 2 SHEETS

OF PART OF THE CITY OF DOWNEY, COUNTY OF LOS ANGELES

Being a survey of Lot 17 and a portion of Lot 6 of Bixby's subdivision of a portion of the Rancho Los Cerritos per map recorded in Book 2 Pages 234-235 of Miscellaneous Records of Los Angeles County, California

4-41

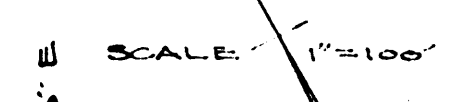
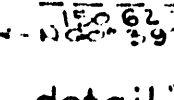
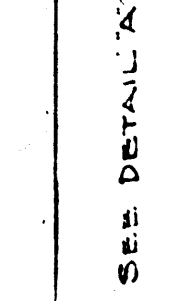
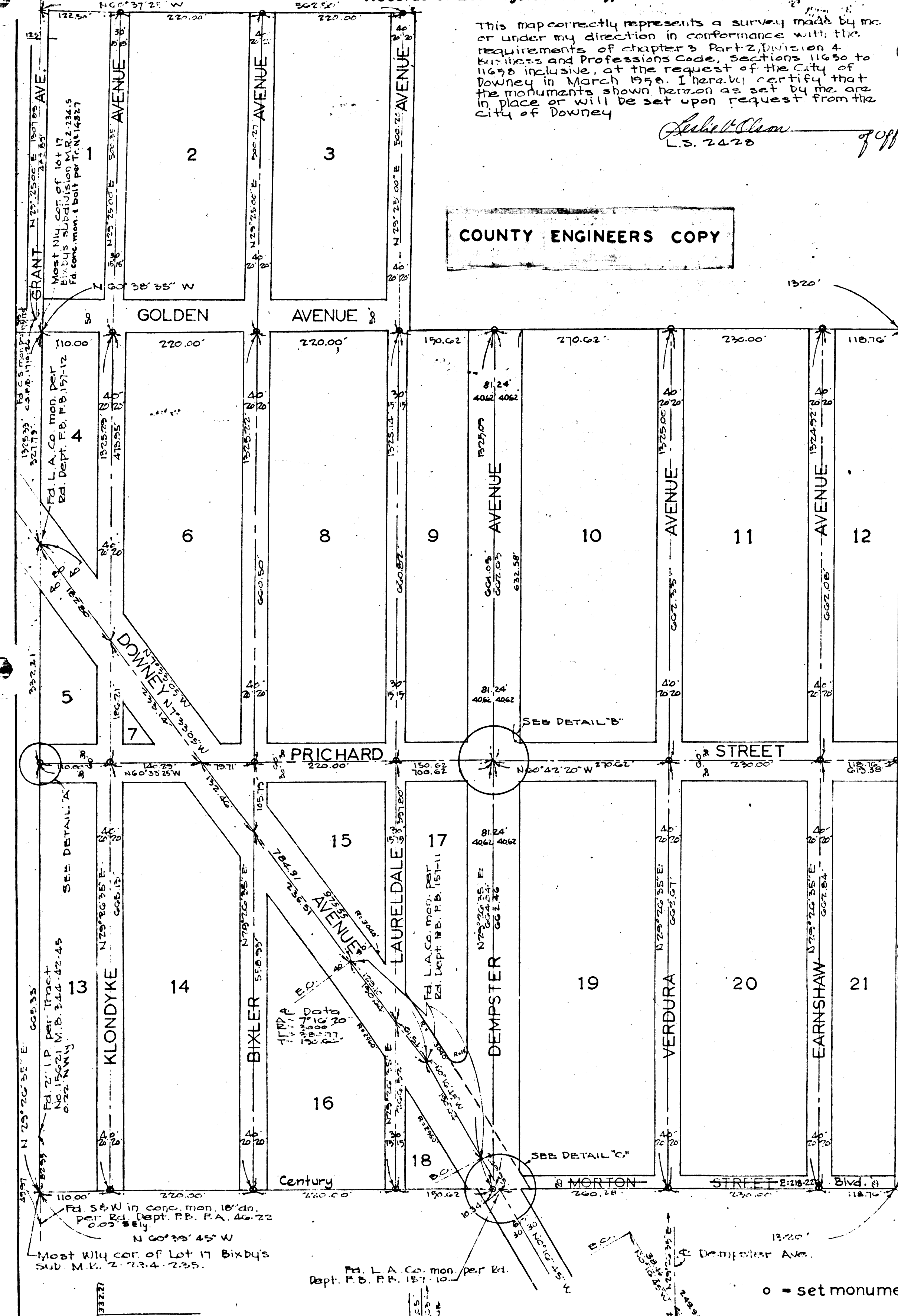
Pg 2

This map correctly represents a survey made by me or under my direction in performance with the requirements of chapter 3 Part 2, Division 4 Business and Professions Code, Sections 11650 to 11658 inclusive, at the request of the City of Downey in March 1958. I hereby certify that the monuments shown hereon as set by me are in place or will be set upon request from the City of Downey

Robert Olson L.S. 2428

Filed City of Downey 4/12/58 21 4 PM 41 Shattara

COUNTY ENGINEERS COPY



LEGEND o - set monuments tagged L.S. 2428

INDEX 32 D3 CAD 78 B-241

The bearing of N 60° 35' 45" W of the line of Lot 17 Bixby's subdivision M.R. 2-234-235 as shown on C.S.F.B. 1837 was used as the basis of bearing for this map.