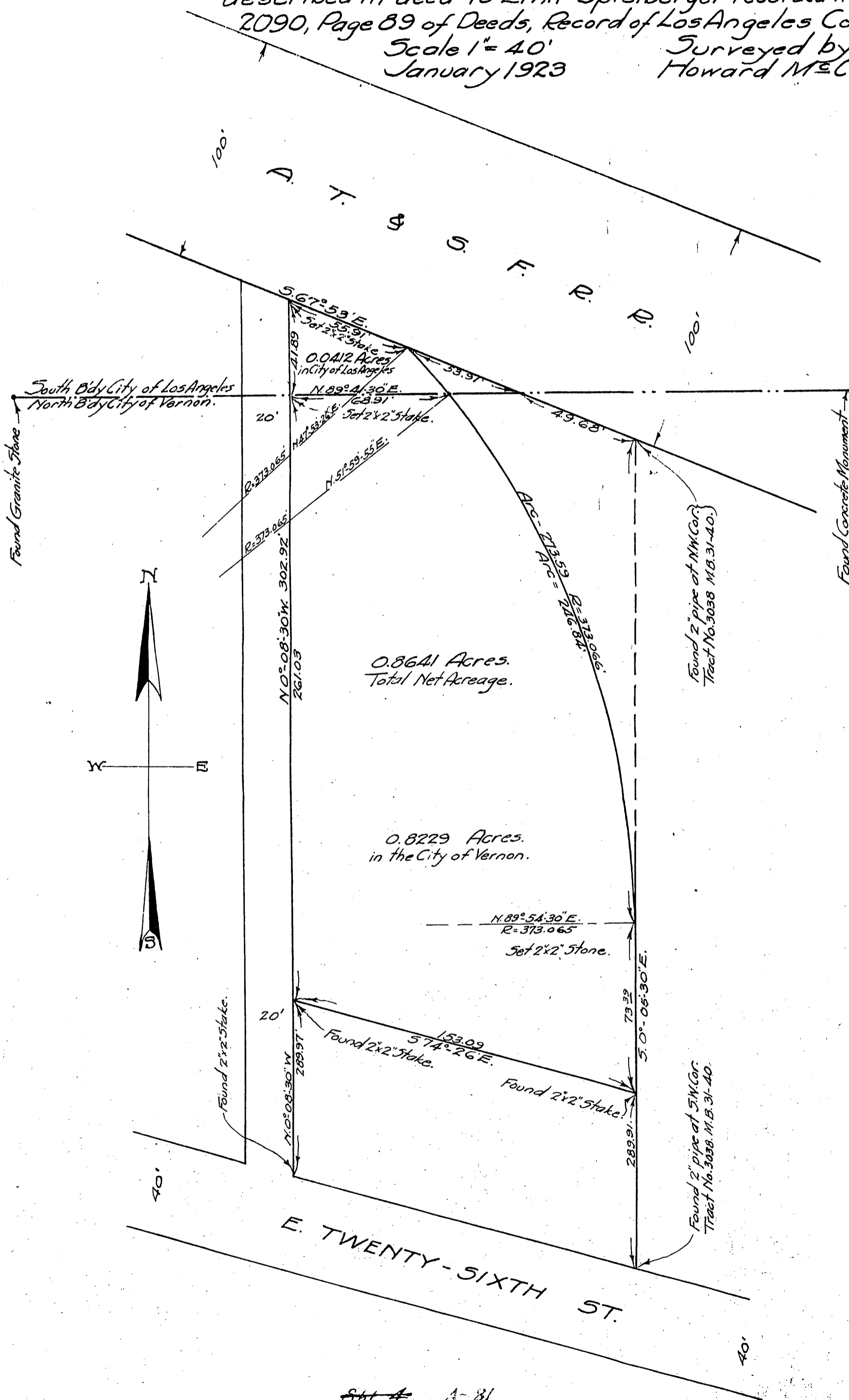


96

Map ORM 2157-111 III

Showing survey of a portion of the 7.34 Acre parcel allotted to Maria Antonia Luga de Sepulveda in Superior Court Case No. 16386 and as more particularly described in deed to Emil Spielberger recorded in Book 2090, Page 89 of Deeds, Record of Los Angeles County. Scale 1" = 40' Surveyed by Howard McCurdy.



Sht. 4 A-81
Sht. 357 A-15

Recorded April 12, 1923.

2157.