

Northerly City Boundary

S. 89° 21' 45" W

ORM 2227-108 (1)

108 Sheet 1.

98

Pacific Electric Ry Co.  
To City of Los Angeles.

Nellie F. Wakely to Carl & Ellet Scholtz  
Dds 2004-127

Magdalena Sepulveda  
S.C.C. No. 19137. 2 2/3 Acre Allotment

Rosa Sepulveda de Goyon 18.20 Acre Allotment.

S.C.C. No. 19137

John Cazaux  
S.C.C. No. 19137.

9 8/9 Acre Allotment  
S.C.C. No. 19137.

Rosa Sepulveda de Goyon 2 2/3 Acre Allotment  
S.C.C. No. 19137.

Angelo Orquidez 0.55 Acre Allotment, S.C.C. No. 19137.

CITY OF LOS ANGELES

Portion of West Half of Section 2 T. 1. S. S. B. B. & M.

Recorded May 4, 1923.

A 220  
M 40  
2227

See Sheet No. 99

Smt. 40  
H. 100  
13-14

ANGELES.

Vicenta B. de Ybarraondo 6.85 Acre  
S.C.C. No. 19,137.

Allotment.

Vicenta B. Wucherer  
to Los Angeles Pacific Company  
Dds. 5523-23.

J.W. Bartell 9.76 Acre Allotment

S.C.C. No. 19,137.

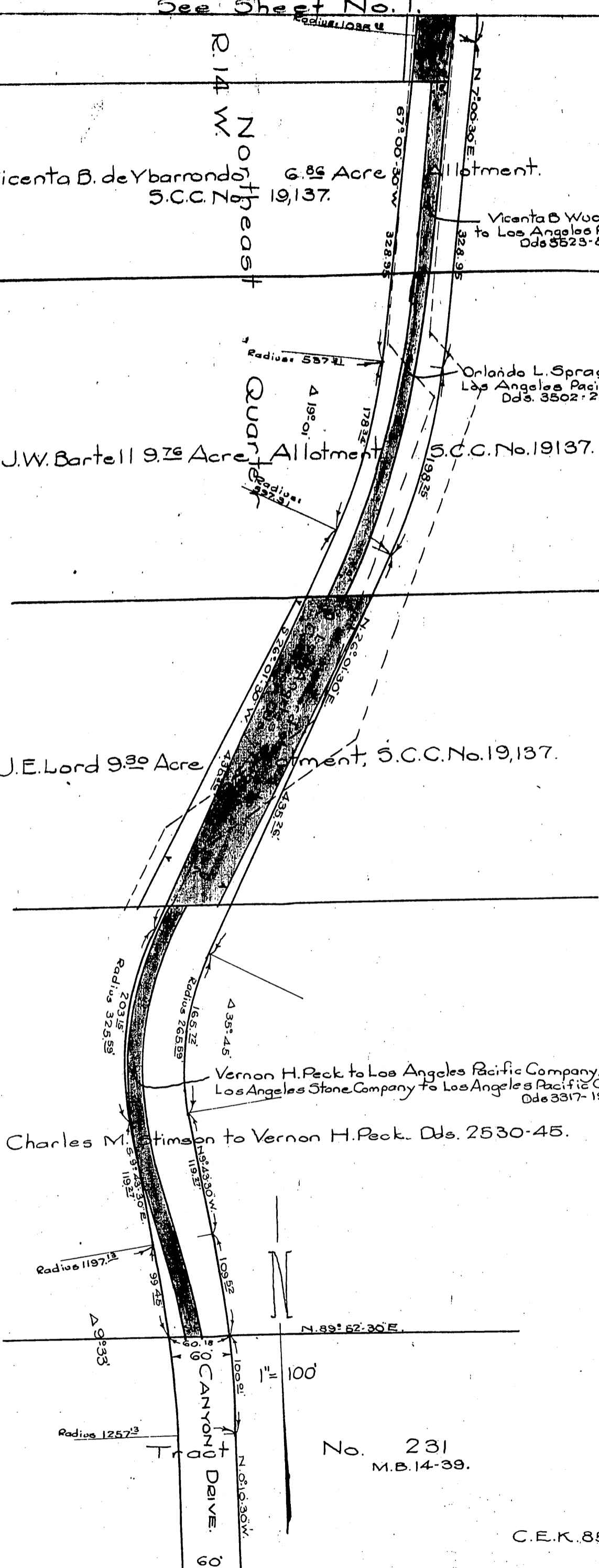
Orlando L. Sprague to  
Los Angeles Pacific Company  
Dds. 3502-257.

J.E. Lord 9.30 Acre

Allotment, S.C.C. No. 19,137.

Vernon H. Peck to Los Angeles Pacific Company, Dds. 3262-6  
Los Angeles Stone Company to Los Angeles Pacific Company,  
Dds. 3317-197.

Charles M. [unclear] to Vernon H. Peck, Dds. 2530-45.



No. 231  
M.B. 14-39.

C.E.K. 856.

1561-40  
2227