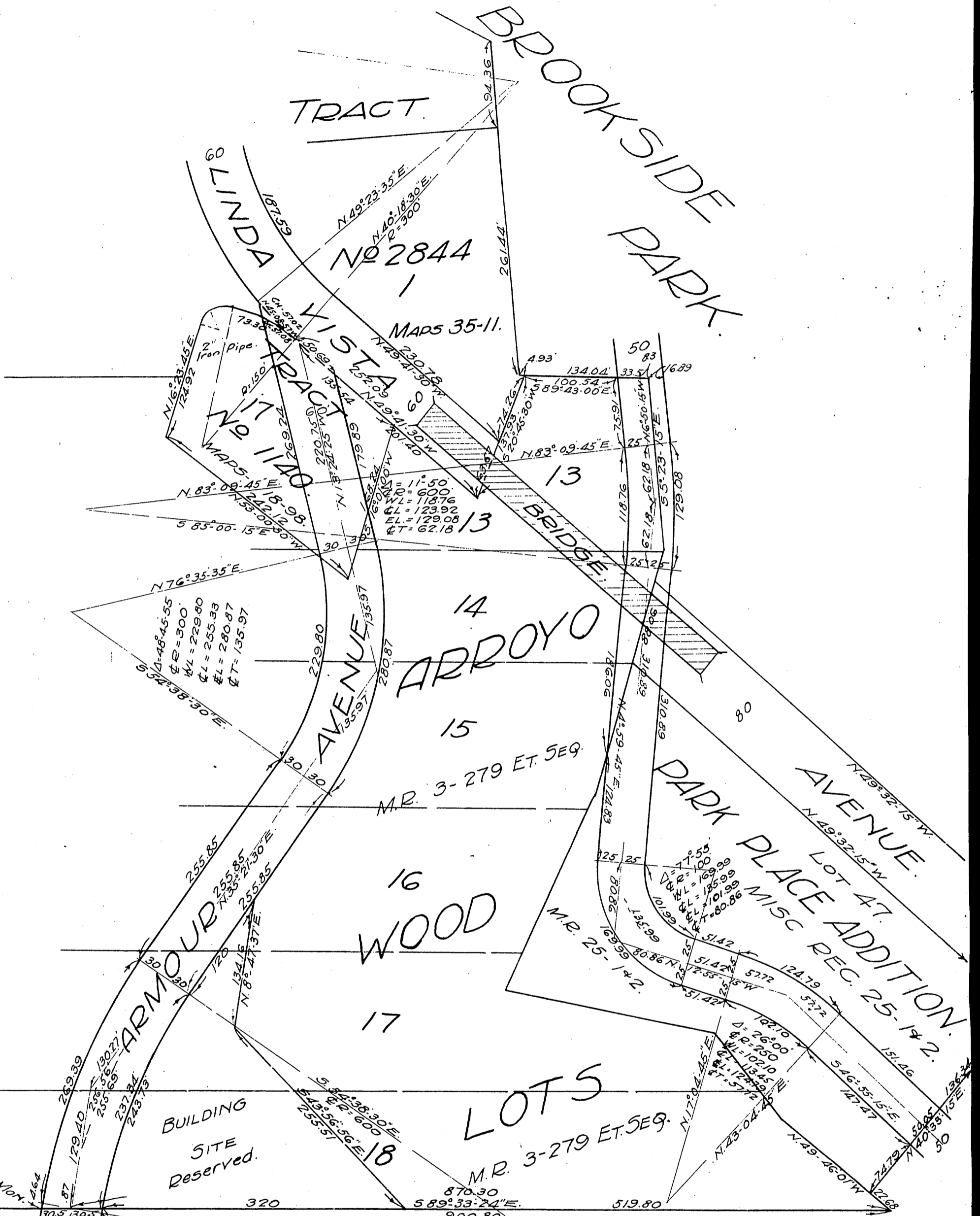


M. Cochrane Armour & Minnie Armour
to
City of Pasadena.

11



Scale 1" = 100'

NOTE: E.C. IS 0.87 SOUTH OF
1/2 LOT 18 MEASURED ALONG TANGENT.

LOT 1.
TRACT 4116.
SHEET No. 1.
M.B. 44-4&5.

Δ	= 24° 30'
ϕR	= 600
W. RT OF WAY	= 269.39
W. L. ROAD	= 265.11
ϕL	= 256.56
ϕL	= 248.01
ϕL RT OF WAY	= 243.13
ϕT	= 130.27

D: 36-178
Per. lots 16, 17 & 18 quitclaimed by Pasadena City D: 41-242 O.R. 4237-152
Recorded July 25, 1923.
Dedicated for Arroyo Seco Park purp. - E: 23-171, Res. 6585

Sht. 41 Sht. 42
A 52