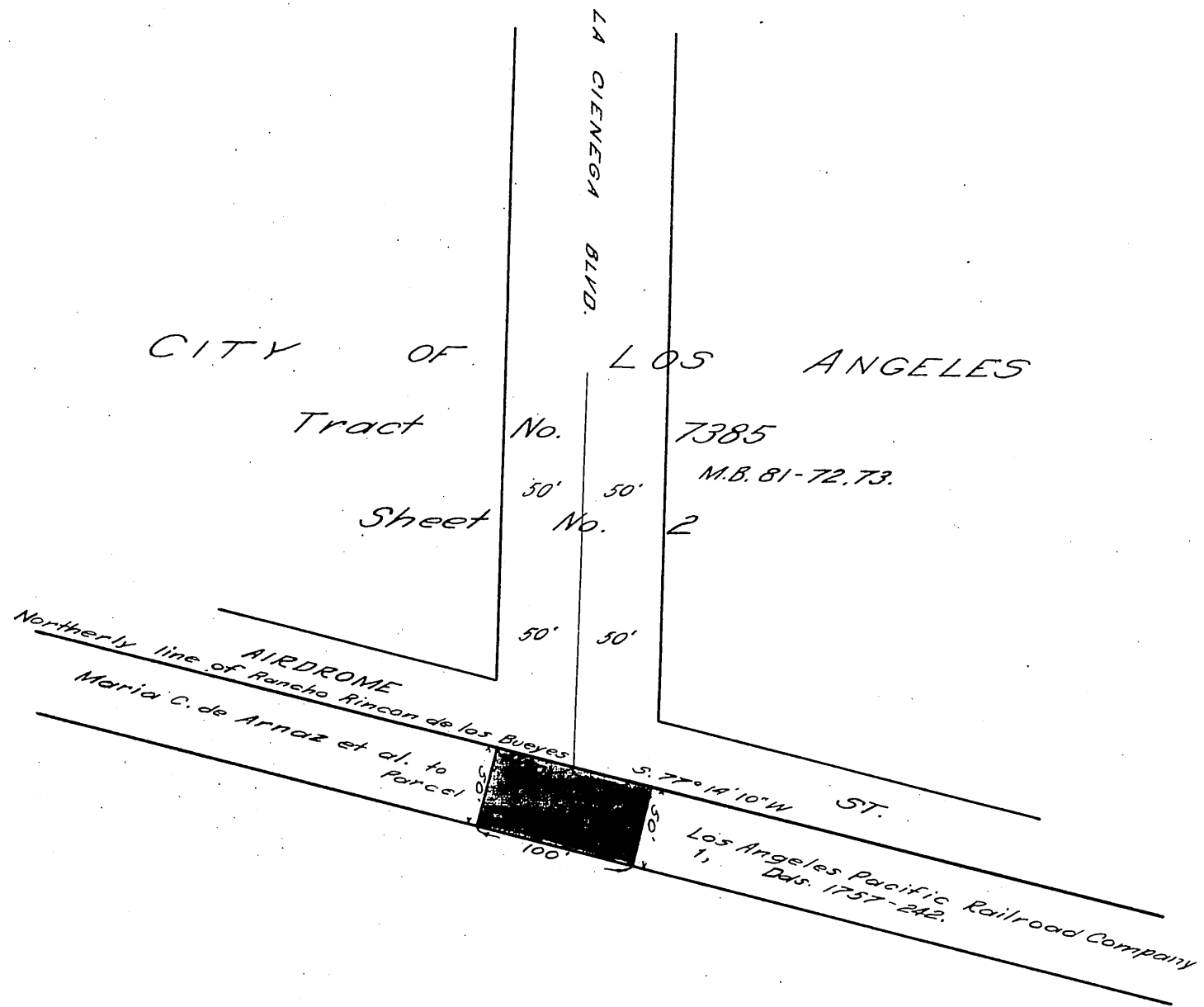


PACIFIC ELECTRIC RAILWAY COMPANY 44

TO

CITY OF LOS ANGELES



Subdivision of the property of Jose de Arnaz  
 M.R. 37-53, M.R. 107-144  
 Rincon de los Bueyes

D: 40-7

1" = 100'

C.E.K. 933

RECORDED APRIL 2, 1924

Comp. C.W. W.M.

A-541  
Sht. 22

O.R. 2905.