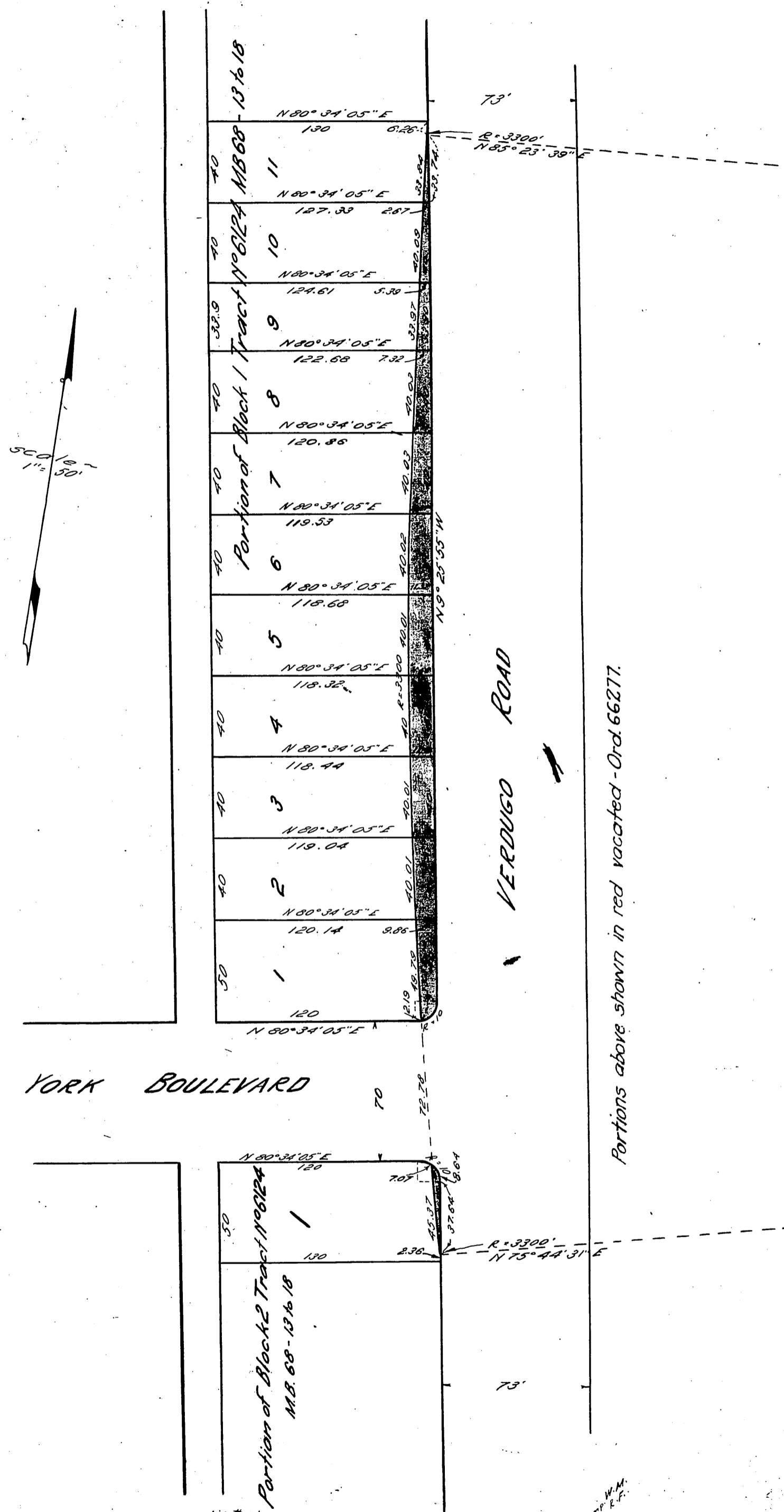


Wm. M. Glassell &
Margaret S. Glassell
TO
City of Los Angeles

53

Sht. 41
A-299



YORK BOULEVARD

VERDUGO ROAD

Portions above shown in red vacated - Ord. 66277.

SH# 1
D: 35-246

Recorded Dec. 7, 1923.

W.M.
Comp. E.F.

A-299

O.R. 2989.