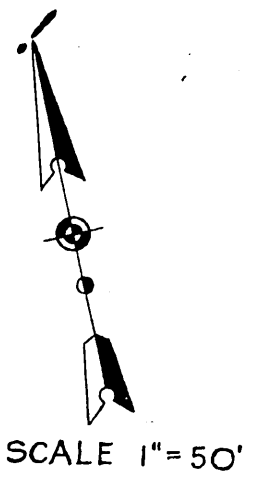


IGNACIO O. VEJAR
TO
CITY OF POMONA

ORM-8125-3
30



LA VERNE

AVE.

EL PARAISO TRACT
M.B. 28, PG. 60.

LOT 2

LOT 1

LOT 3

LOT 4

LOT 7

LOT 6

LOT 5

*-NOTE:-
A portion of Lot 6, El Paraiso Tract deeded to the City of Pomona, Los Angeles County California for street purposes shown outlined Red.*

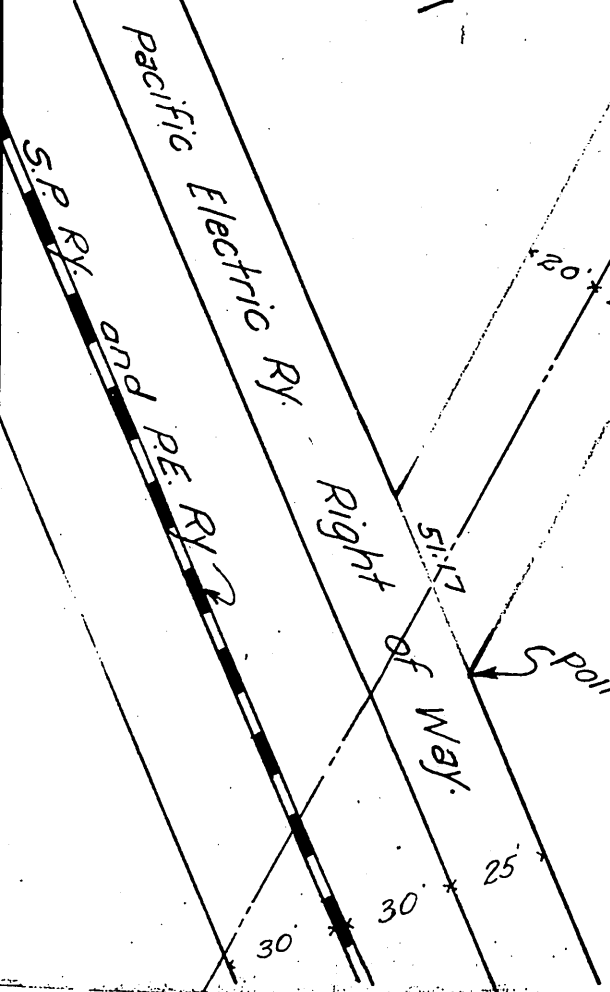
See D:21-99

D:72-59

RECORDED MAR. 14, 1929.

Comp. E.P. C.S.

O.R. 812



Point of beginning

5.89° 55' 00" E.
5.85° 05' 36" E.
5.81° 11' 58" E.
5.76° 24' 47" E.

9.57° 13' 30" E.

9.32° 46' 30" W. 2.00° 35' 58"
9.45° 23' 5"
N. 32° 45' 30" E. 2.598.86

R=720
241.12
S. 32° 46' 30" W. 316.07
R=700
R=680

70.23
20 x 20
20 x 20

90
90

N. 51° 03' W.

30

30

25